

STATE OF ILLINOIS
 DEPARTMENT OF TRANSPORTATION
 DIVISION OF HIGHWAYS
**PROPOSED
 HIGHWAY PLANS**

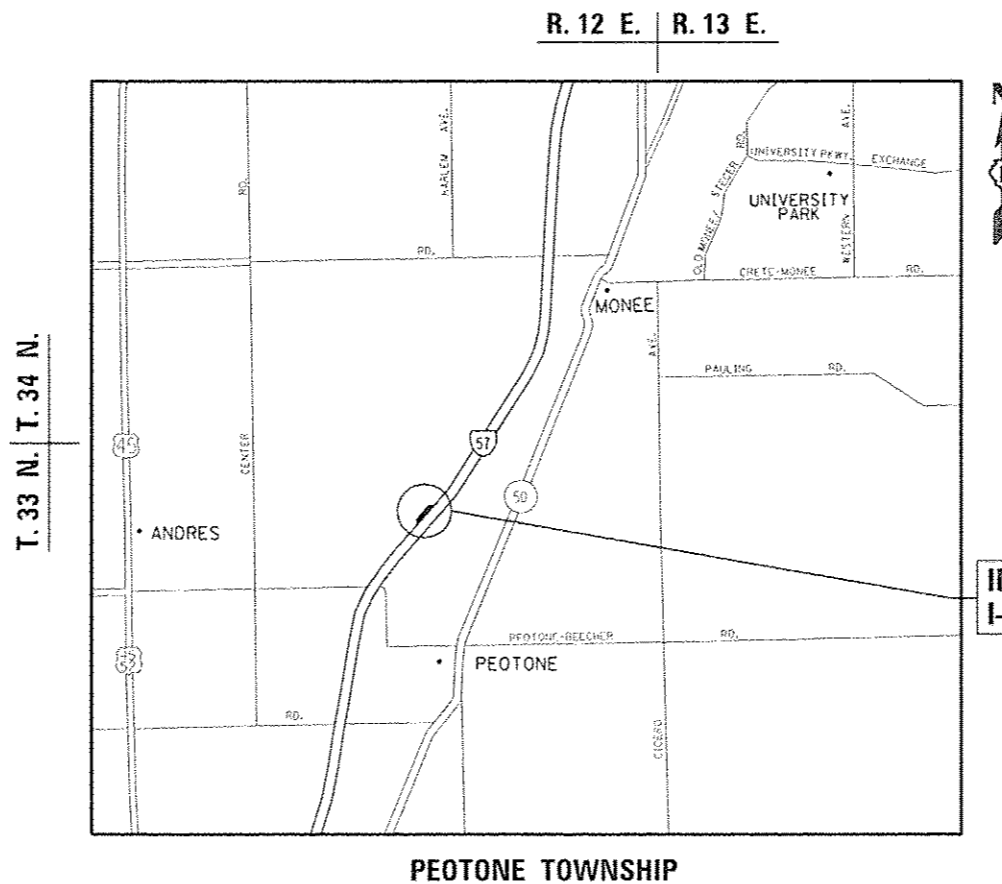
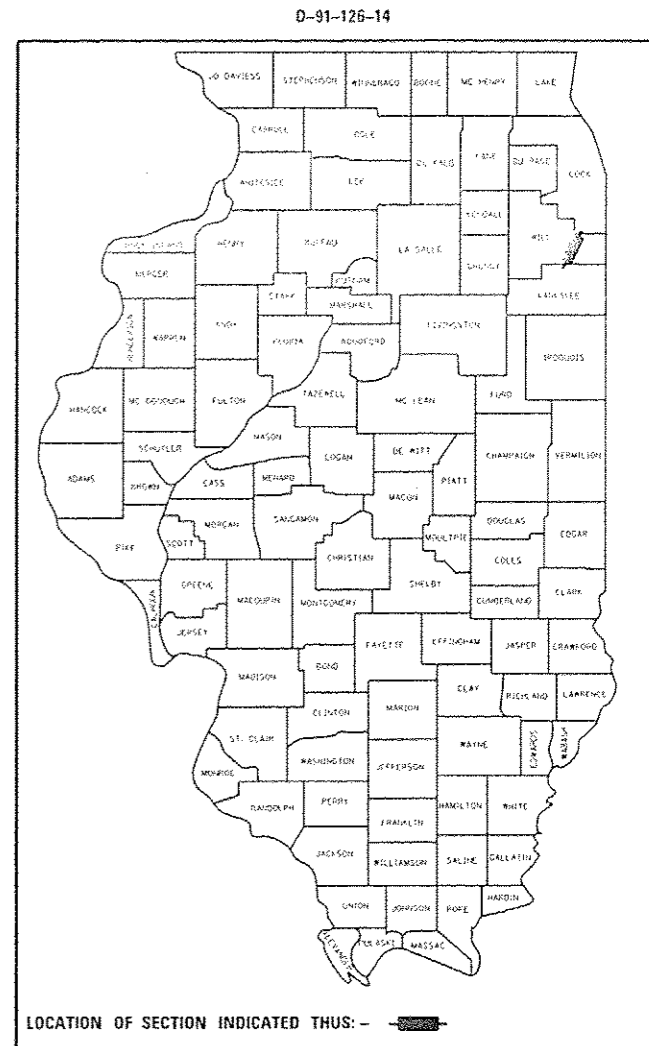
F.A.I. RTE.	SECTION	COUNTY	TOTAL SHEETS	SHEET NO.
57	(99-2TWS)PP	WILL	18	1
ILLINOIS			CONTRACT NO. 60X55	

FOR INDEX OF SHEETS, SEE SHEET NO. 2

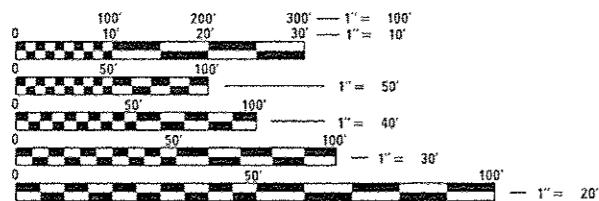
THE IMPROVEMENT IS LOCATED IN THE VILLAGE OF PEOTONE.

F.A.I. ROUTE 57: I-57
 WEIGH STATION (SB PEOTONE)
 SECTION: (99-2TWS)PP
 WEIGH STATION PATCHING
 WILL COUNTY

C-91-126-14



IMPROVEMENT LOCATION
 I-57 SB PEOTONE



FULL SIZE PLANS HAVE BEEN PREPARED USING STANDARD ENGINEERING SCALES. REDUCED SIZED PLANS WILL NOT CONFORM TO STANDARD SCALES. IN MAKING MEASUREMENTS ON REDUCED PLANS, THE ABOVE SCALES MAY BE USED.

J.U.L.I.E.
 JOINT UTILITY LOCATION INFORMATION FOR EXCAVATION
 1-800-892-0123
 OR 811

PROJECT ENGINEER J. ALAIN MIDY (847) 221-3056
 PROJECT MANAGER ISSAM RAYYAN (847) 705-4178

GROSS & NET LENGTH = 4150 FT. = 0.786 MILE

CONTRACT NO. 60X55

STATE OF ILLINOIS
 DEPARTMENT OF TRANSPORTATION
 DIVISION OF HIGHWAYS

SUBMITTED 2/3 20 14

John F. Moran
 DEPUTY DIRECTOR OF HIGHWAYS, REGION ENGINEER
 March 21 20 14

John D. Baranzelli
 acting ENGINEER OF DESIGN AND ENVIRONMENT
 March 21 20 14

Omer Osman
 DIRECTOR OF HIGHWAYS, CHIEF ENGINEER

PRINTED BY THE AUTHORITY
 OF THE STATE OF ILLINOIS

SUMMARY OF QUANTITIES			URBAN 100% STATE TOTAL QUANTITIES	CONSTRUCTION TYPE CODE 0044					SUMMARY OF QUANTITIES			TOTAL QUANTITIES	CONSTRUCTION TYPE CODE				
CODE NO	ITEM	UNIT		0044					CODE NO	ITEM	UNIT						
42001300	PROTECTIVE COAT	SO YD	709	709													
44200970	CLASS B PATCHES, TYPE II, 10 INCH	SO YD	283	283													
44200974	CLASS B PATCHES, TYPE III, 10 INCH	SO YD	52.5	52.5													
44200976	CLASS B PATCHES, TYPE IV, 10 INCH	SO YD	372.9	372.9													
44201299	DOREL BARS 1 1/2"	EACH	1200	1200													
44213100	PAYEMENT FABRIC	SO YD	425.3	425.3													
44213200	SAW CUTS	FOOT	2832	2832													
44213202	TIE BARS 1"	EACH	169	169													
67000400	ENGINEER'S FIELD OFFICE, TYPE A	CAL MO	2	2													
67100100	MOBILIZATION	L SUM	1	1													
* 78008210	POLYUREA PAYEMENT MARKING TYPE I - LINE 4"	FOOT	396	396													
* 78008240	POLYUREA PAYEMENT MARKING TYPE I - LINE 8"	FOOT	390	390													
x7011015	TRAFFIC CONTROL AND PROTECTION (EXPRESSWAYS)	L SUM	1	1													
* Specialty Item																	

FILE NAME :	USER NAME : <i>pyromax16</i>	DESIGNED :	REVISD -	STATE OF ILLINOIS DEPARTMENT OF TRANSPORTATION	SUMMARY OF QUANTITIES	F.A.I. RTE.	SECTION	COUNTY	TOTAL SHEETS	SHEET NO.
<i>0044_urban100%state100%00440044</i>	<i>pyromax16</i>	DRAWN -	REVISD -			57	199-27WSIPP	WILL	18	3
PLOT SCALE : 001000' = 1" IN.	CHECKED -	REVISD -	REVISD -			CONTRACT NO. 60X55				
PLOT DATE : 2/3/2014	DATE -	REVISD -	REVISD -			SCALE:	SHEET NO. OF SHEETS STA. TO STA.	FED. ROAD DIST. NO. 1 ILLINOIS FED. AID PROJECT		

PATCHING SCHEDULE
FOR CLASS B PATCHES

STATION	DIRECTION	LANE	LENGTH (ft)	WIDTH (ft)	PATCH AREA				DOWEL BARS 1 1/2" 44201299 (Each)	SAW CUTS 44213200 (ft)	TIE BARS 1" 44213202 (Each)	PAVEMENT FABRIC 44213100 (sq. yd)
					TYPE I	TYPE II	TYPE III	TYPE IV				
					(sq. yd)	(sq. yd)	(sq. yd)	(sq. yd)				
1103+90	SB	RAMP	10	14	0.0	0.0	15.6	0.0	24	62.0	0	15.6
1100+20	SB	RAMP	6	14	0.0	9.3	0.0	0.0	24	54.0	0	0.0
1099+90	SB	RAMP	6	14	0.0	9.3	0.0	0.0	24	54.0	0	0.0
1099+29	SB	RAMP	6	14	0.0	9.3	0.0	0.0	24	54.0	0	0.0
1098+84	SB	RAMP	6	14	0.0	9.3	0.0	0.0	24	54.0	0	0.0
1098+29	SB	RAMP	6	20	0.0	13.3	0.0	0.0	36	72.0	0	0.0
1098+28	SB	RAMP	6	14	0.0	9.3	0.0	0.0	24	54.0	0	0.0
1098+18	SB	RAMP	6	14	0.0	9.3	0.0	0.0	24	54.0	0	0.0
1098+15	SB	RAMP	6	14	0.0	9.3	0.0	0.0	24	54.0	0	0.0
1097+93	SB	RAMP	6	14	0.0	9.3	0.0	0.0	24	54.0	0	0.0
1097+59	SB	RAMP	6	14	0.0	9.3	0.0	0.0	24	54.0	0	0.0
1097+44	SB	RAMP	8	30	0.0	0.0	0.0	26.7	56	106.0	0	26.7
1097+13	SB	RAMP	6	14	0.0	9.3	0.0	0.0	24	54.0	0	0.0
EXIT RAMP LANE (PCC) SUBTOTALS					0.0	106.7	15.6	26.7	356.0	780.0	0.0	42.2
					(sq. yd)	(sq. yd)	(sq. yd)	(sq. yd)	(Each)	(ft)	(Each)	(sq. yd)

FILE NAME =	USER NAME = pyzranowskirb	DESIGNED -	REVISED -	STATE OF ILLINOIS DEPARTMENT OF TRANSPORTATION	PATCHING SCHEDULE EXIT RAMP TO WEIGH STATION				F.A.I. RTE.	SECTION	COUNTY	TOTAL SHEETS	SHEET NO.
ct:\pwork\pwork\pyzranowskirb\0370428\DI12614-sht-plan.dgn	DI12614-sht-plan.dgn	DRAWN -	REVISED -		57	199-2TWSJPP	WILL	18	4				
Default	PLOT SCALE = 100.0000' / in.	CHECKED -	REVISED -		CONTRACT NO. 60X55				ILLINOIS FED. AID PROJECT				
	PLOT DATE = 2/3/2014	DATE -	REVISED -		SCALE:	SHEET	OF	SHEETS	STA.	TO STA.			

PATCHING SCHEDULE
FOR CLASS B PATCHES

STATION	DIRECTION	LANE	LENGTH (ft)	WIDTH (ft)	PATCH AREA				DOWEL BARS 1 1/2" 44201299 (Each)	SAW CUTS 44213200 (ft)	TIE BARS 1" 44213202 (Each)	PAVEMENT FABRIC 44213100 (sq. yd)
					TYPE I	TYPE II	TYPE III	TYPE IV				
					(sq. yd)	(sq. yd)	(sq. yd)	(sq. yd)				
1090+39	SB	BYPASS	6	14	0.0	9.3	0.0	0.0	24	54.0	0	0.0
1088+50	SB	BYPASS	6	14	0.0	9.3	0.0	0.0	24	54.0	0	0.0
1087+83	SB	BYPASS	6	14	0.0	9.3	0.0	0.0	24	54.0	0	0.0
1088+25	SB	BYPASS	27	14	0.0	0.0	0.0	42.0	24	96.0	27	42.0
1087+54	SB	BYPASS	6	14	0.0	9.3	0.0	0.0	24	54.0	0	0.0
1087+37	SB	BYPASS	6	14	0.0	9.3	0.0	0.0	24	54.0	0	0.0
1087+30	SB	BYPASS	6	14	0.0	9.3	0.0	0.0	24	54.0	0	0.0
1086+50	SB	BYPASS	6	14	0.0	9.3	0.0	0.0	24	54.0	0	0.0
1086+72	SB	BYPASS	6	14	0.0	9.3	0.0	0.0	24	54.0	0	0.0
1086+39	SB	BYPASS	9	14	0.0	14.0	0.0	0.0	24	60.0	0	0.0
PASSING LANE SUBTOTALS					0.0	88.7	0.0	42.0	240.0	588.0	27.0	42.0
					(sq. yd)	(sq. yd)	(sq. yd)	(sq. yd)	(Each)	(ft)	(Each)	(sq. yd)

FILE NAME =	USER NAME = pyzranowskirb	DESIGNED -	REVISED -	STATE OF ILLINOIS DEPARTMENT OF TRANSPORTATION	PATCHING SCHEDULE BYPASS LANE				F.A.I. RTE.	SECTION	COUNTY	TOTAL SHEETS	SHEET NO.
ct:\pwork\pwork\pyzranowskirb\0370428	ND112614-sht-plan.dgn	DRAWN -	REVISED -		57	199-2TWSJPP	WILL	18	5				
Default	PLOT SCALE = 100.0000' / in.	CHECKED -	REVISED -		SCALE: SHEET OF SHEETS STA. TO STA.				CONTRACT NO. 60X55				
	PLOT DATE = 2/3/2014	DATE -	REVISED -		ILLINOIS FED. AID PROJECT								

PATCHING SCHEDULE
FOR CLASS B PATCHES

STATION	DIRECTION	LANE	LENGTH (ft)	WIDTH (ft)	PATCH AREA				DOWEL BARS 1 1/2" 44201299 (Each)	SAW CUTS 44213200 (ft)	TIE BARS 1" 44213202 (Each)	PAVEMENT FABRIC 44213100 (sq. yd)
					TYPE I (sq. yd)	TYPE II (sq. yd)	TYPE III (sq. yd)	TYPE IV (sq. yd)				
1088+72	SB	SCALE	6	14	0.0	9.3	0.0	0.0	24	60.0	0	0.0
1087+00	SB	SCALE	6	14	0.0	9.3	0.0	0.0	24	60.0	0	0.0
1085+44	SB	SCALE	6	25	0.0	0.0	16.7	0.0	48	93.0	0	16.7
1085+72	SB	SCALE	6	17	0.0	11.3	0.0	0.0	32	69.0	0	0.0
1085+84	SB	SCALE	6	15	0.0	10.0	0.0	0.0	28	63.0	0	0.0
SCALE LANE SUBTOTALS					0.0 (sq. yd)	40.0 (sq. yd)	16.7 (sq. yd)	0.0 (sq. yd)	156.0 (Each)	345.0 (ft)	0.0 (Each)	16.7 (sq. yd)

FILE NAME =	USER NAME = pyrzanowskirb	DESIGNED -	REVISED -	STATE OF ILLINOIS DEPARTMENT OF TRANSPORTATION	PATCHING SCHEDULE SCALE LANE				F.A.I. RTE.	SECTION	COUNTY	TOTAL SHEETS	SHEET NO.
ct:\pwork\pwork\pyrzanowskirb\037042	ND112614-sht-plan.dgn	DRAWN -	REVISED -		57	199-2TWSJPP	WILL	18	6				
Default	PLOT SCALE = 100.0000' / in.	CHECKED -	REVISED -		SCALE: SHEET OF SHEETS STA. TO STA.				CONTRACT NO. 60X55				
	PLOT DATE = 2/3/2014	DATE -	REVISED -						ILLINOIS FED. AID PROJECT				

**PATCHING SCHEDULE
FOR CLASS B PATCHES**

STATION	DIRECTION	LANE	LENGTH (ft)	WIDTH (ft)	PATCH AREA				DOWEL BARS 1 1/2" 44201299 (Each)	SAW CUTS 44213200 (ft)	TIE BARS 1" 44213202 (Each)	PAVEMENT FABRIC 44213100 (sq. yd)
					TYPE I (sq. yd)	TYPE II (sq. yd)	TYPE III (sq. yd)	TYPE IV (sq. yd)				
1085+28	SB	RAMP	13	14	0.0	0.0	20.2	0.0	24	68.0	0	20.2
1083+57	SB	RAMP	90	14	0.0	0.0	0.0	140.0	24	222.0	90	140.0
1082+15	SB	RAMP	30	14	0.0	0.0	0.0	46.7	24	102.0	30	46.7
1081+84	SB	RAMP	9	14	0.0	14.0	0.0	0.0	24	60.0	0	0.0
1078+37	SB	RAMP	6	14	0.0	9.3	0.0	0.0	24	54.0	0	0.0
1081+70	SB	RAMP	6	85	0.0	0.0	0.0	56.7	168	267.0	0	56.7
1081+10	SB	RAMP	6	20	0.0	13.3	0.0	0.0	36	72.0	0	0.0
1080+39	SB	RAMP	6	40	0.0	0.0	0.0	26.7	76	132.0	0	26.7
1080+00	SB	RAMP	7	14	0.0	10.9	0.0	0.0	24	56.0	0	0.0
1082+63	SB	RAMP	22	14	0.0	0.0	0.0	34.2	24	86.0	22	34.2
RAMP LANE (PCC) SUBTOTALS					0.0	47.6	20.2	304.2	448.0	1119.0	142.0	324.4
					(sq. yd)	(sq. yd)	(sq. yd)	(sq. yd)	(Each)	(ft)	(Each)	(sq. yd)

FILE NAME =	USER NAME = pyrzenowskirb	DESIGNED -	REVISED -	STATE OF ILLINOIS DEPARTMENT OF TRANSPORTATION	PATCHING SCHEDULE ENTRANCE RAMP TO I-57				F.A.I. RTE.	SECTION	COUNTY	TOTAL SHEETS	SHEET NO.
ct:\pwork\pwork\pyrzenowskirb\0370428	ND112614-sht-plan.dgn	DRAWN -	REVISED -		57	199-2TWSJPP	WILL	18	7				
Default	PLOT SCALE = 100.0000' / in.	CHECKED -	REVISED -		CONTRACT NO. 60X55				ILLINOIS FED. AID PROJECT				
	PLOT DATE = 2/3/2014	DATE -	REVISED -		SCALE:	SHEET	OF	SHEETS	STA.	TO STA.			

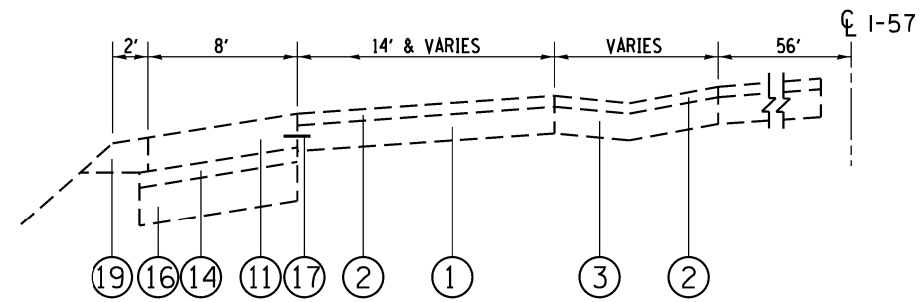
TOTAL
CLASS B PATCHES

	PATCH AREA				DOVEL	SAW CUTS	TIE BARS	PAYEMENT
	TYPE I	TYPE II	TYPE III	TYPE IV	BARS 1 1/2"		1"	FABRIC
	(sq. yd)	(sq. yd)	(sq. yd)	(sq. yd)	(Each)	(ft)	(Each)	(sq. yd)
CLASS B PATCHING TOTALS	0.0	283.0	52.5	372.9	1200.0	2832.0	169.0	425.3
	(sq. yd)	(sq. yd)	(sq. yd)	(sq. yd)	(Each)	(ft)	(Each)	(sq. yd)

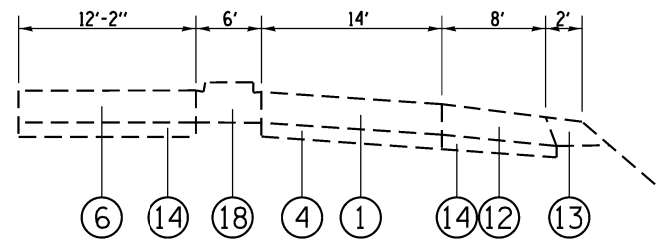
FILE NAME =	USER NAME = pyzranowskirb	DESIGNED -	REVISED -	STATE OF ILLINOIS DEPARTMENT OF TRANSPORTATION	PATCHING SCHEDULE TOTAL				F.A.I. RTE.	SECTION	COUNTY	TOTAL SHEETS	SHEET NO.
ct:\pwork\pwork\pyzranowskirb\037042	ND112614-sht.pln.dgn	DRAWN -	REVISED -		57	199-2TWSJPP	WILL	18	8				
Default	PLOT SCALE = 100.0000' / in.	CHECKED -	REVISED -						CONTRACT NO. 60X55				
	PLOT DATE = 2/3/2014	DATE -	REVISED -		SCALE:	SHEET	OF	SHEETS	STA.	TO STA.	ILLINOIS FED. AID PROJECT		

LEGEND

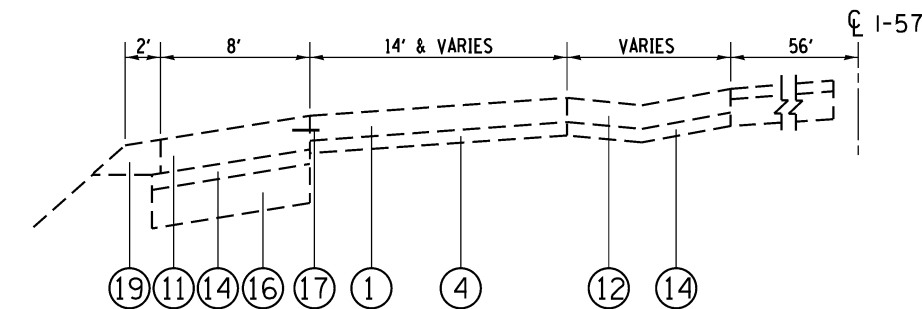
- ① EXIST. CONT. REINF. P.C.C. PAVT., 8"
- ② EXIST. BIT. RESURFACING, 3/4"
- ③ EXIST. BIT. SHOULDER, 8"
- ④ EXIST. STABILIZED SUB-BASE, 4"
- ⑤ EXIST. CONT. REINF. P.C.C. PAVT., 8"
- ⑥ EXIST. P.C.C. PAVT., (±) 10" (HINGE JOINTED)
- ⑦ EXIST. BIT. CONC. BINDER CSE., MIX B, TYPE 1, 1 3/4"
- ⑧ EXIST. BIT. CONC. BINDER CSE., MIX B, TYPE 2, 1 3/4" (SHOULDER)
- ⑨ EXIST. BIT. CONC. SURFACE CSE., MIX D, CLASS 1, TYPE 1, 1 1/2"
- ⑩ EXIST. BIT. CONC. SURFACE CSE., MIX D, CLASS 1, TYPE 2, 1 1/2"
- ⑪ EXIST. P.C.C. SHOULDER, (±) 10"
- ⑫ EXIST. BIT. SHOULDER, 8"
- ⑬ EXIST. AGGR. SHOULDER, TYPE A, 10"
- ⑭ EXIST. BIT. BASE CSE., 4"
- ⑮ EXIST. AGGR. SHOULDER, TYPE A, 11"
- ⑯ EXIST. AGGR. SUBGRADE, 12"
- ⑰ EXIST. #8 TIE BAR
- ⑱ EXIST. MEDIAN
- ⑲ EXIST. BIT. SHOULDERS (±) 10"



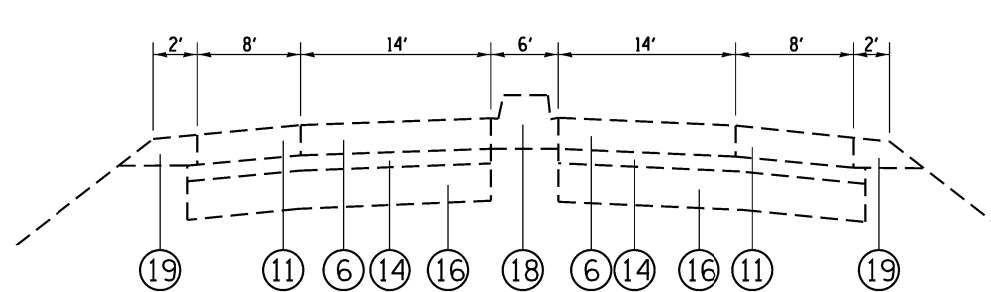
TYPICAL SECTION
I-57 SB PEOTONE WEIGH STATION
 STA. 1073+50 TO STA. 1080+78



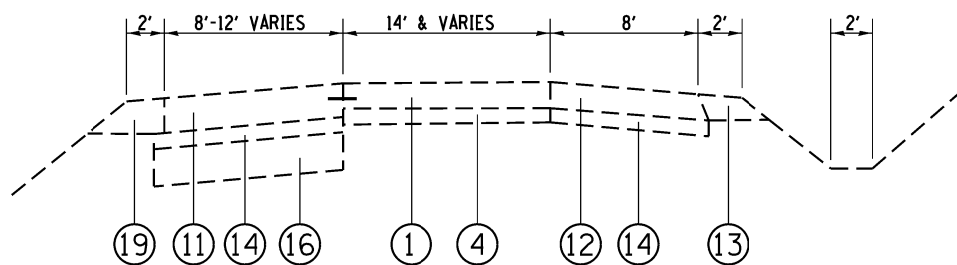
TYPICAL SECTION
I-57 SB PEOTONE WEIGH STATION
 STA. 1090+30 TO STA. 1093+00



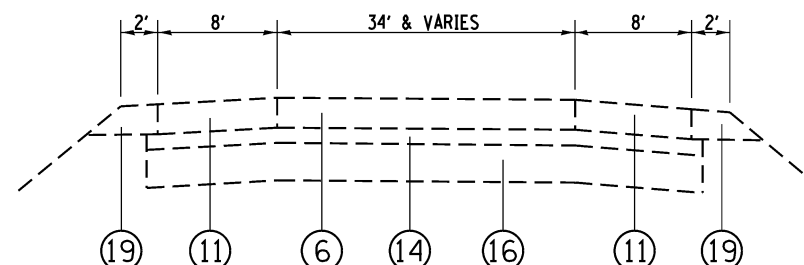
TYPICAL SECTION
I-57 SB PEOTONE WEIGH STATION
 STA. 1080+78 TO STA. 1082+00



TYPICAL SECTION
I-57 SB PEOTONE WEIGH STATION
 STA. 1093+00 TO STA. 1100+00



TYPICAL SECTION
I-57 SB PEOTONE WEIGH STATION
 STA. 1082+00 TO STA. 1089+00

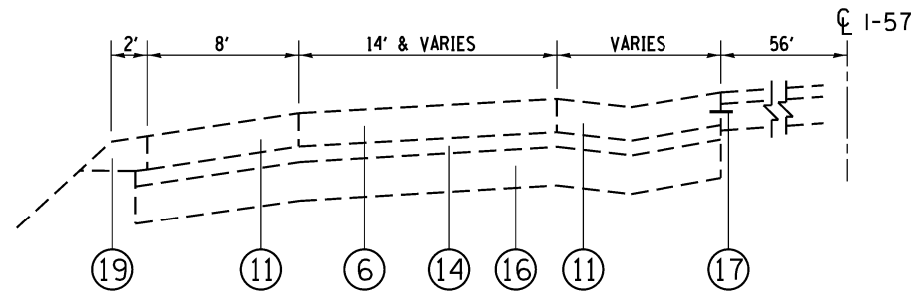


TYPICAL SECTION
I-57 SB PEOTONE WEIGH STATION
 STA. 1100+00 TO STA. 1105+54

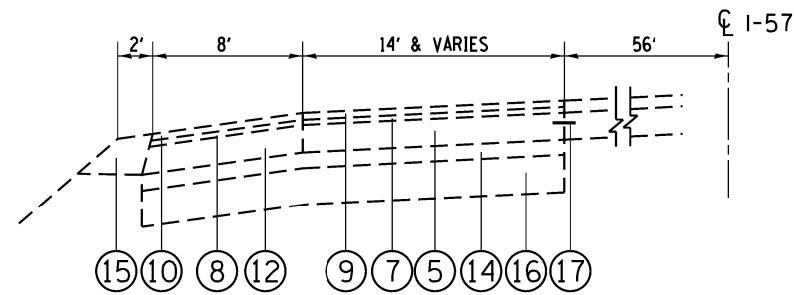
FILE NAME = c:\p\work\p\dot\pyrzenowskirb\d037042\DI12614-sht-plan.dgn	USER NAME = pyrzenowskirb	DESIGNED -	REVISED -	STATE OF ILLINOIS DEPARTMENT OF TRANSPORTATION	TYPICAL SECTIONS I-57 SB PEOTONE WEIGH STATION			F.A.I. RTE.	SECTION	COUNTY	TOTAL SHEETS	SHEET NO.
	PLOT SCALE = 100.0000' / in.	CHECKED -	REVISED -					57	199-2TWSJPP	WILL	18	9
Default	PLOT DATE = 2/10/2014	DATE -	REVISED -	SCALE: SHEET OF SHEETS STA. TO STA.			CONTRACT NO. 60X55 ILLINOIS FED. AID PROJECT					

LEGEND

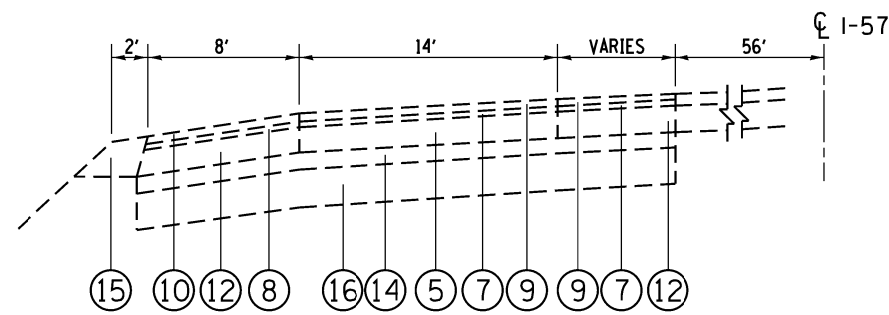
- ① EXIST. CONT. REINF. P.C.C. PAVT., 8"
- ② EXIST. BIT. RESURFACING, 3/4"
- ③ EXIST. BIT. SHOULDER, 8"
- ④ EXIST. STABILIZED SUB-BASE, 4"
- ⑤ EXIST. CONT. REINF. P.C.C. PAVT., 8"
- ⑥ EXIST. P.C.C. PAVT., (±) 10" (HINGE JOINTED)
- ⑦ EXIST. BIT. CONC. BINDER CSE., MIX B, TYPE 1, 1 3/4"
- ⑧ EXIST. BIT. CONC. BINDER CSE., MIX B, TYPE 2, 1 3/4" (SHOULDER)
- ⑨ EXIST. BIT. CONC. SURFACE CSE., MIX D, CLASS 1, TYPE 1, 1 1/2"
- ⑩ EXIST. BIT. CONC. SURFACE CSE., MIX D, CLASS 1, TYPE 2, 1 1/2"
- ⑪ EXIST. P.C.C. SHOULDER, (±) 10"
- ⑫ EXIST. BIT. SHOULDER, 8"
- ⑬ EXIST. AGGR. SHOULDER, TYPE A, 10"
- ⑭ EXIST. BIT. BASE CSE., 4"
- ⑮ EXIST. AGGR. SHOULDER, TYPE A, 11"
- ⑯ EXIST. AGGR. SUBGRADE, 12"
- ⑰ EXIST. #8 TIE BAR
- ⑱ EXIST. MEDIAN
- ⑲ EXIST. BIT. SHOULDERS (±) 10"



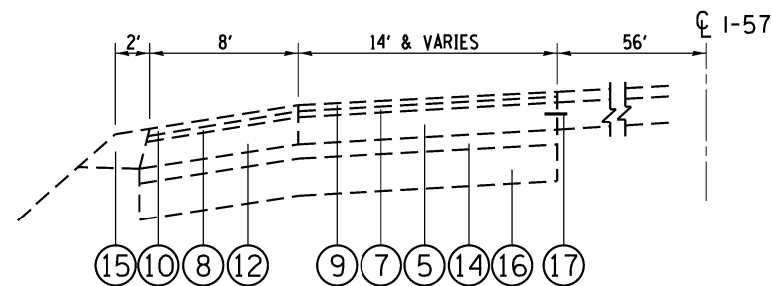
TYPICAL SECTION
I-57 SB PEOTONE WEIGH STATION
STA. 1105+54 TO STA. 1107+22



TYPICAL SECTION
I-57 SB PEOTONE WEIGH STATION
STA. 1112+00 TO STA. 1115+00

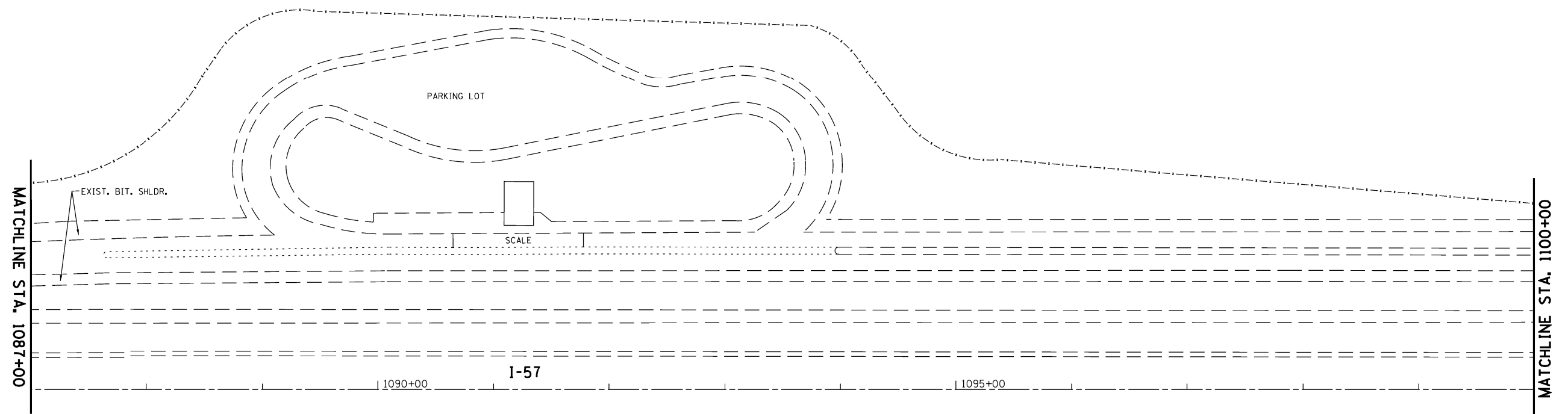
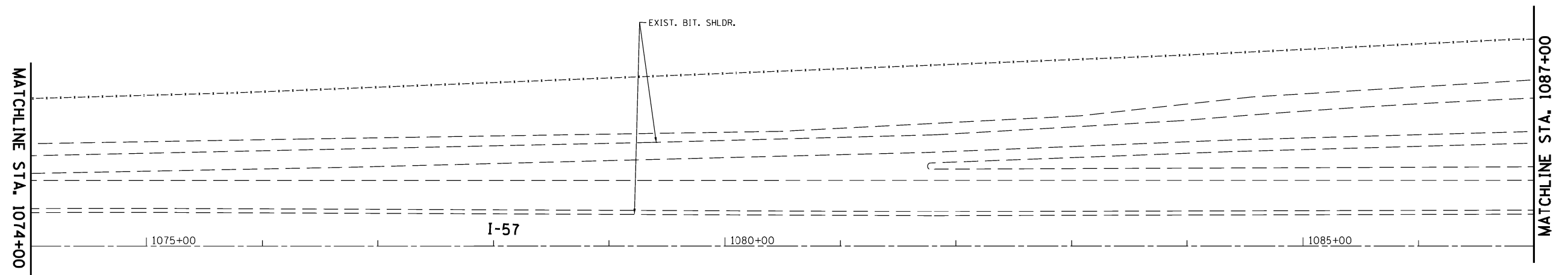
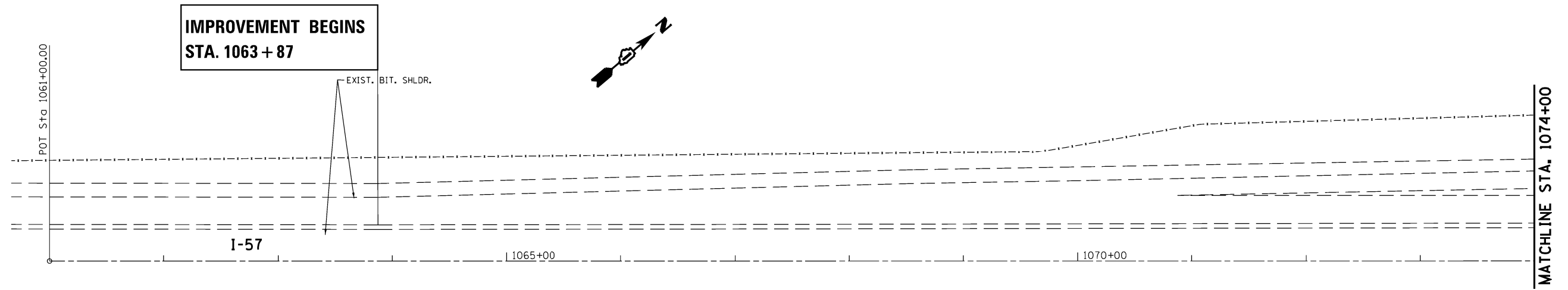


TYPICAL SECTION
I-57 SB PEOTONE WEIGH STATION
STA. 1107+22 TO STA. 1108+88



TYPICAL SECTION
I-57 SB PEOTONE WEIGH STATION
STA. 1108+88 TO STA. 1112+00

FILE NAME =	USER NAME = pyrzenowskirb	DESIGNED -	REVISED -	STATE OF ILLINOIS DEPARTMENT OF TRANSPORTATION	TYPICAL SECTIONS				F.A.I. RTE.	SECTION	COUNTY	TOTAL SHEETS	SHEET NO.
Default	ct:\pwork\pwork\pyrzenowskirb\037042\DI12614-sht-plan.dgn	DRAWN -	REVISED -		I-57 SB PEOTONE WEIGH STATION				57	199-2TWSJPP	WILL	18	10
	PLOT SCALE = 100.0000' / in.	CHECKED -	REVISED -		SCALE: SHEET OF SHEETS STA. TO STA.				CONTRACT NO. 60X55				
	PLOT DATE = 2/3/2014	DATE -	REVISED -		ILLINOIS FED. AID PROJECT								



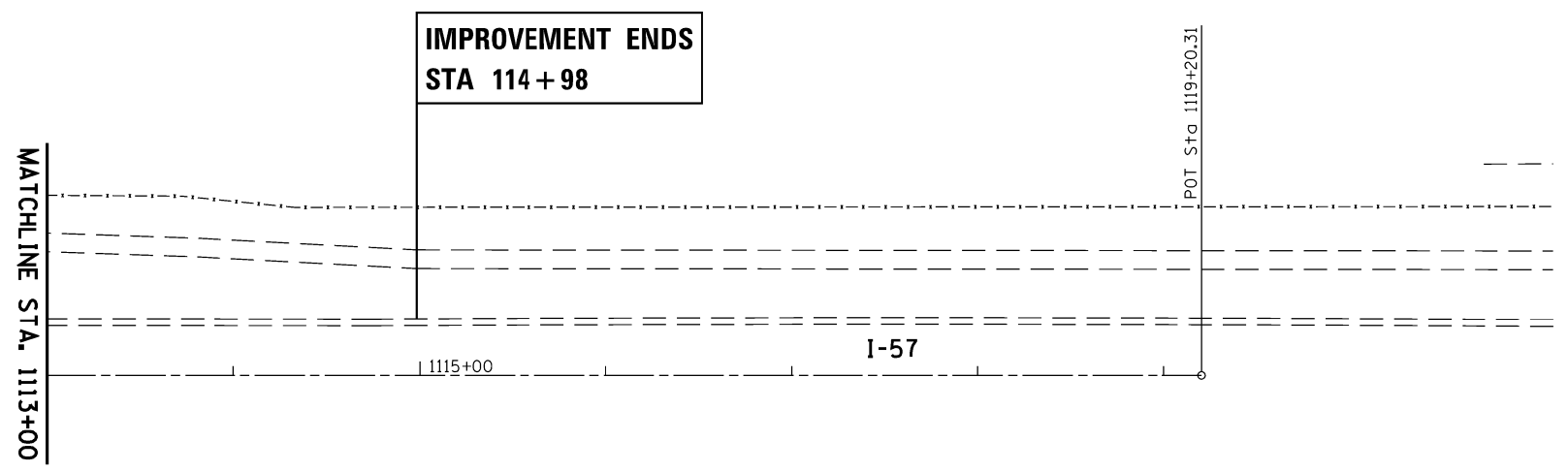
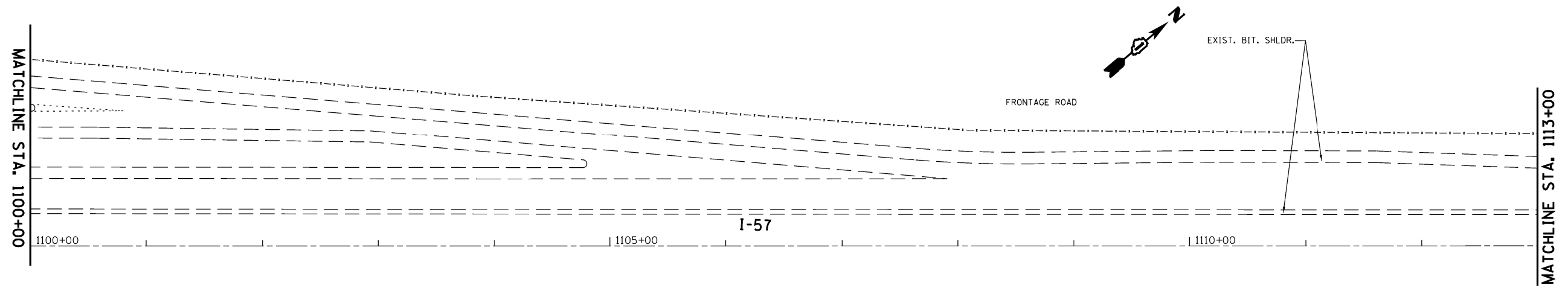
FILE NAME =	USER NAME = pyrzenowskirb	DESIGNED -	REVISED -
ct:\pwork\pido\pyrzenowskirb\0370428\DI12614-sht\plan.dgn	DI12614-sht\plan.dgn	DRAWN -	REVISED -
Default	PLOT SCALE = 100.0000' / in.	CHECKED -	REVISED -
	PLOT DATE = 2/3/2014	DATE -	REVISED -

**STATE OF ILLINOIS
DEPARTMENT OF TRANSPORTATION**

**PLAN SHEETS
I-57 SB PEOTONE WEIGH STATION**

SCALE: SHEET OF SHEETS STA. TO STA.

F.A.I. RTE.	SECTION	COUNTY	TOTAL SHEETS	SHEET NO.
57	199-2TWSJPP	WILL	18	11
CONTRACT NO. 60X55				
ILLINOIS FED. AID PROJECT				



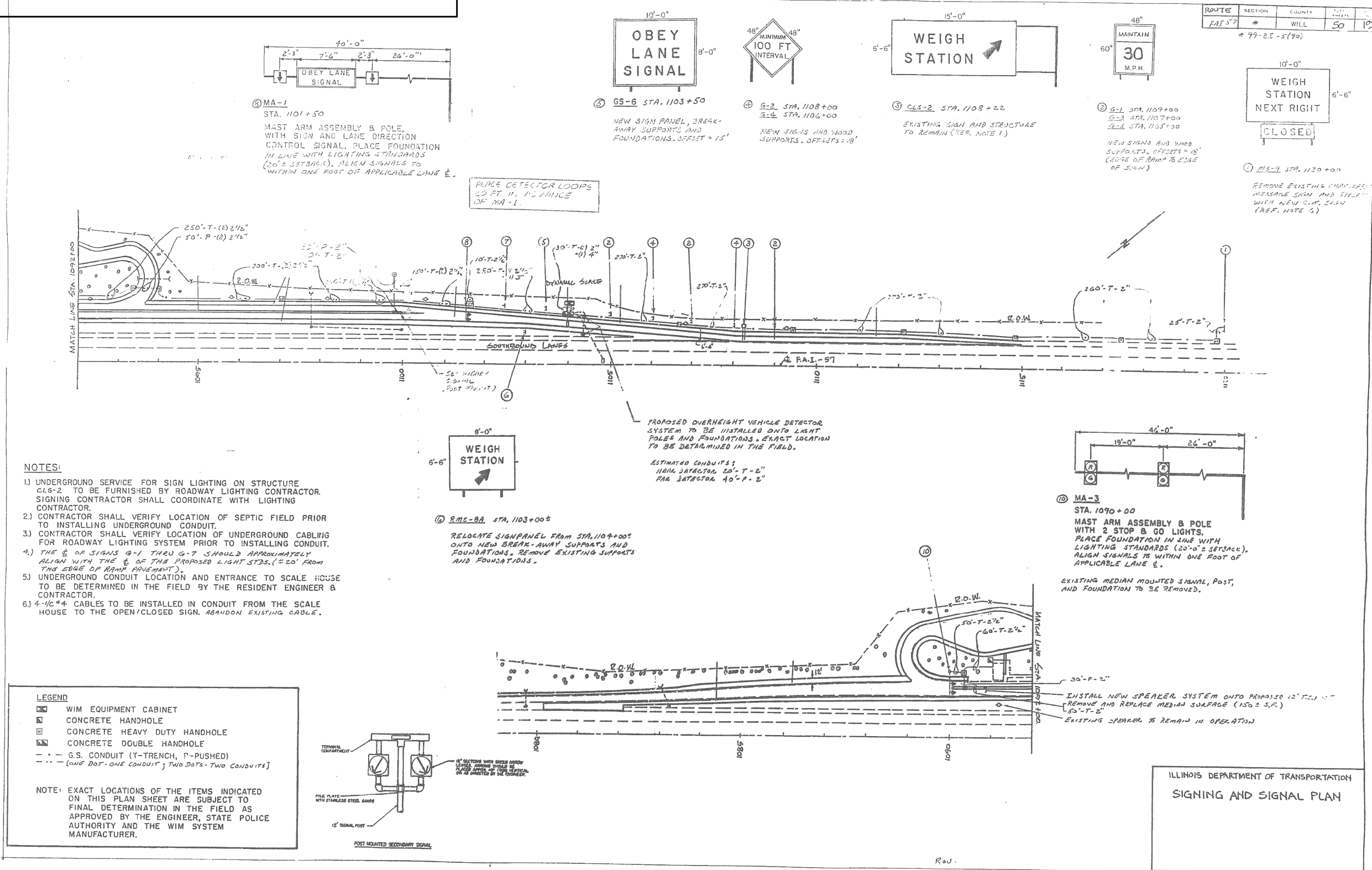
FILE NAME =	USER NAME = pyrzenowskirb	DESIGNED -	REVISED -
ct:\pwork\pwork\pyrzenowskirb\0370428\DI12614-sht-plan.dgn		DRAWN -	REVISED -
Default	PLOT SCALE = 100.0000' / in.	CHECKED -	REVISED -
	PLOT DATE = 2/3/2014	DATE -	REVISED -

**STATE OF ILLINOIS
DEPARTMENT OF TRANSPORTATION**

PLAN SHEETS			
I-57 SB PEOTONE WEIGH STATION			
SCALE:	SHEET	OF SHEETS	STA. TO STA.

F.A.I. RTE.	SECTION	COUNTY	TOTAL SHEETS	SHEET NO.
57	199-2TWSJPP	WILL	18	12
CONTRACT NO. 60X55				
ILLINOIS FED. AID PROJECT				

FOR INFORMATION ONLY



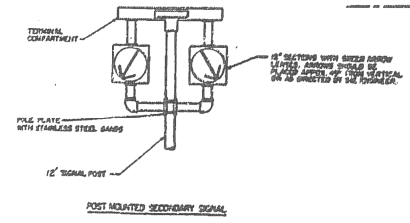
NOTES:

- 1) UNDERGROUND SERVICE FOR SIGN LIGHTING ON STRUCTURE CLS-2 TO BE FURNISHED BY ROADWAY LIGHTING CONTRACTOR. SIGNING CONTRACTOR SHALL COORDINATE WITH LIGHTING CONTRACTOR.
- 2) CONTRACTOR SHALL VERIFY LOCATION OF SEPTIC FIELD PRIOR TO INSTALLING UNDERGROUND CONDUIT.
- 3) CONTRACTOR SHALL VERIFY LOCATION OF UNDERGROUND CABLING FOR ROADWAY LIGHTING SYSTEM PRIOR TO INSTALLING CONDUIT.
- 4) THE ϕ OF SIGNS G-1 THRU G-7 SHOULD APPROXIMATELY ALIGN WITH THE ϕ OF THE PROPOSED LIGHT STDS. (20' FROM THE EDGE OF RAMP PAVEMENT).
- 5) UNDERGROUND CONDUIT LOCATION AND ENTRANCE TO SCALE HOUSE TO BE DETERMINED IN THE FIELD BY THE RESIDENT ENGINEER & CONTRACTOR.
- 6) 4-1/2" \times 4" CABLES TO BE INSTALLED IN CONDUIT FROM THE SCALE HOUSE TO THE OPEN/CLOSED SIGN. ABANDON EXISTING CABLE.

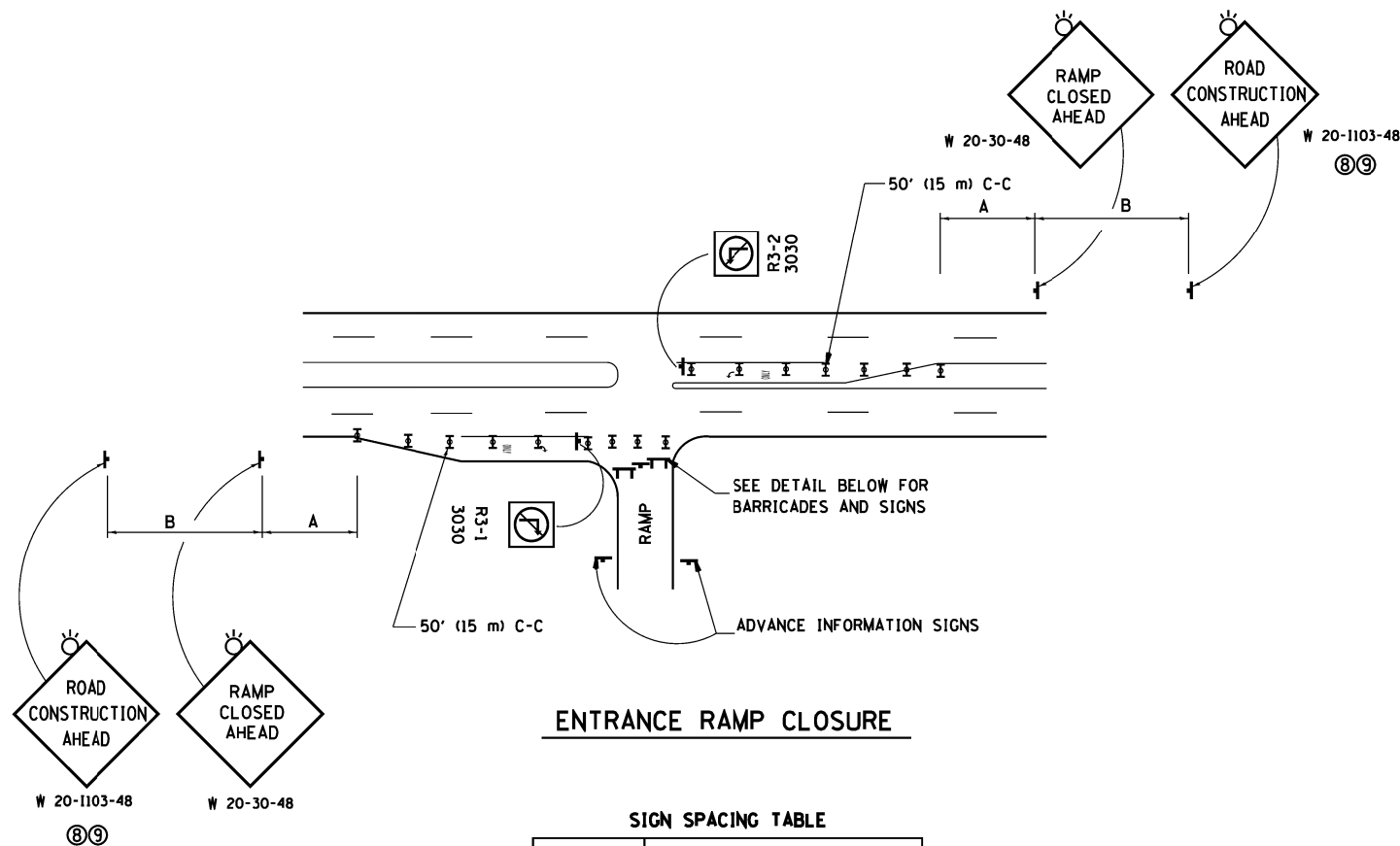
LEGEND

- WIM EQUIPMENT CABINET
- CONCRETE HANDHOLE
- CONCRETE HEAVY DUTY HANDHOLE
- CONCRETE DOUBLE HANDHOLE
- G.S. CONDUIT (T-TRENCH, P-PUSHED)
- [ONE DOT-ONE CONDUIT; TWO DOTS-TWO CONDUITS]

NOTE: EXACT LOCATIONS OF THE ITEMS INDICATED ON THIS PLAN SHEET ARE SUBJECT TO FINAL DETERMINATION IN THE FIELD AS APPROVED BY THE ENGINEER, STATE POLICE AUTHORITY AND THE WIM SYSTEM MANUFACTURER.



FILE NAME =	USER NAME = pyzzenowskirb	DESIGNED -	REVISED -	STATE OF ILLINOIS DEPARTMENT OF TRANSPORTATION	PLAN SHEETS				F.A.I. RTE.	SECTION	COUNTY	TOTAL SHEETS	SHEET NO.
ct:\pwork\pwork\pyzzenowskirb\037042	NDI12614-sht-plan.dgn	DRAWN -	REVISED -		I-57 SB PEOTONE WEIGH STATION				57	199-2TWSJPP	WILL	18	13
Default	PLOT SCALE = 100.0000' / in.	CHECKED -	REVISED -		SCALE:	SHEET	OF	SHEETS	STA.	TO	STA.	CONTRACT NO. 60X55	
	PLOT DATE = 2/10/2014	DATE -	REVISED -		ILLINOIS FED. AID PROJECT								

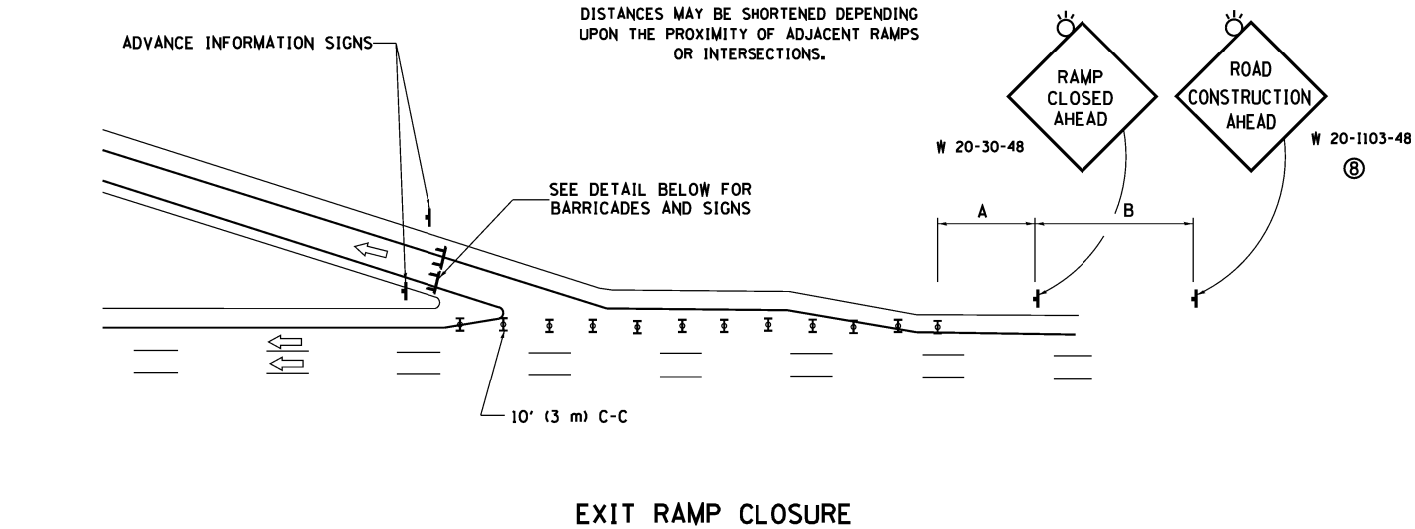


ENTRANCE RAMP CLOSURE

SIGN SPACING TABLE

FACILITY	DISTANCE BETWEEN SIGNS	
	A	B
EXPRESSWAY >24 HOURS	1000' (300 m)	1500' (450 m)
EXPRESSWAY <24 HOURS	500' (150 m)	500' (150 m)
ARTERIAL 55 MPH	500' (150 m)	500' (150 m)
ARTERIAL 50-45 MPH	350' (100 m)	350' (100 m)
ARTERIAL <45 MPH	200' (60 m)	200' (60 m)

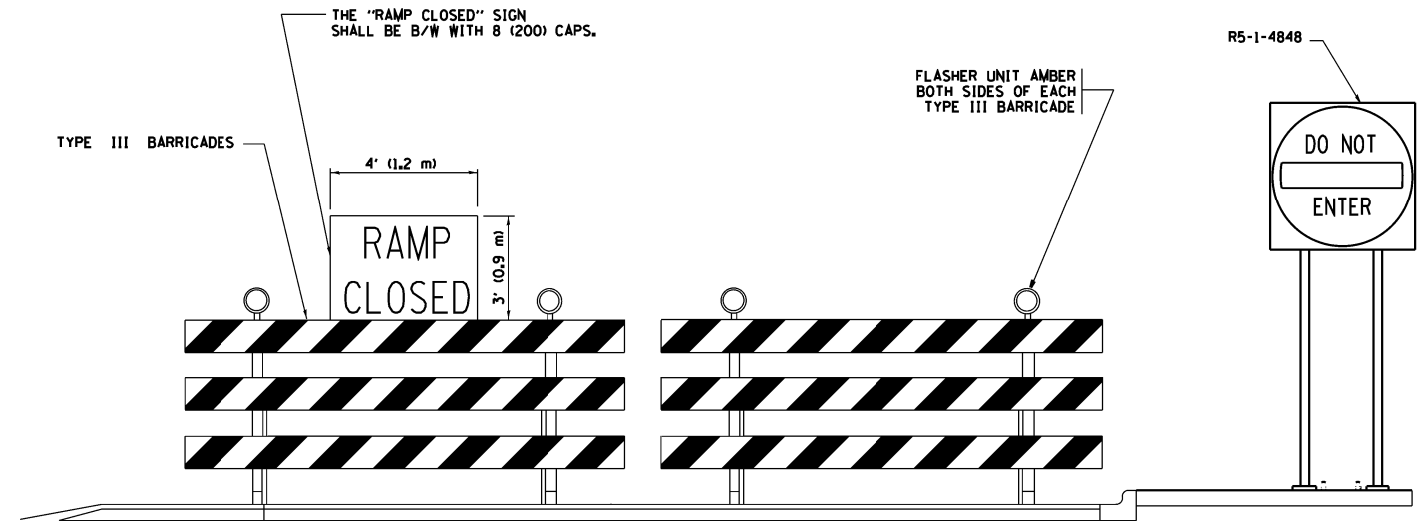
DISTANCES MAY BE SHORTENED DEPENDING UPON THE PROXIMITY OF ADJACENT RAMPS OR INTERSECTIONS.



EXIT RAMP CLOSURE

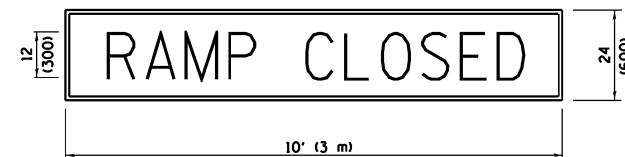
SYMBOLS

- ▬ TYPE II BARRICADE OR DRUM WITH STEADY BURN MONO-DIRECTIONAL LIGHT
- ▬ TYPE III BARRICADE WITH 2 FLASHING LIGHTS



DETAIL FOR REQUIRED BARRICADES & SIGNS

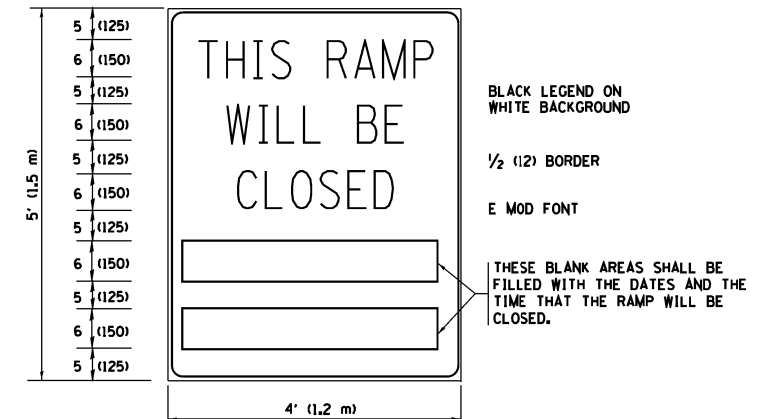
RAMP CLOSURE ADVANCE WARNING SIGN



BLACK LEGEND ON ORANGE BACKGROUND MOUNTED DIAGONALLY
E MOD FONT
1 (25) BORDER

THESE SIGNS ARE REQUIRED ON ALL THE EXIT GUIDE SIGNS FOR EXIT RAMPS THAT WILL BE CLOSED FOR MORE THAN FOUR (4) CONSECUTIVE DAYS.

RAMP CLOSURE ADVANCE INFORMATION SIGN



BLACK LEGEND ON WHITE BACKGROUND

1/2 (12) BORDER

E MOD FONT

THESE BLANK AREAS SHALL BE FILLED WITH THE DATES AND THE TIME THAT THE RAMP WILL BE CLOSED.

THESE SIGNS ARE REQUIRED ON BOTH SIDES OF THE RAMP, MINIMUM OF 1 WEEK IN ADVANCE OF THE CLOSURE.

THESE SIGNS SHALL BE FABRICATED AND PAID FOR ACCORDING TO THE TEMPORARY INFORMATION SIGNING SPECIAL PROVISION

GENERAL NOTES:

- ① CONES MAY BE SUBSTITUTED FOR DRUMS OR TYPE II BARRICADES DURING DAY OPERATIONS. CONES SHALL BE A MINIMUM OF 28 (700) HIGH.
- ② STEADY BURN LIGHTS WILL NOT BE REQUIRED FOR DAY OPERATIONS.
- ③ A FLAGGER SHALL BE POSITIONED AT EACH CLOSED RAMP THAT IS OPEN TO CONSTRUCTION VEHICLES, PRECEDED BY A W20-7 FLAGGER WARNING SIGN.
- ④ ALL ROUTE MARKERS AND TRAILBLAZER ASSEMBLIES WHICH DIRECT MOTORISTS TO A CLOSED ENTRANCE RAMP SHALL BE COVERED WHEN THE RAMP IS CLOSED FOR MORE THAN FOUR (4) DAYS.
- ⑤ THE SIGNING AND BARRICADING WHICH IS REQUIRED BY THIS DETAIL SHALL BE INCLUDED IN THE COST OF TRAFFIC CONTROL AND PROTECTION (EXPRESSWAYS).
- ⑥ AUTHORIZATION FROM THE DISTRICT'S BUREAU OF TRAFFIC IS REQUIRED FOR ALL RAMP CLOSURES.
- ⑦ THE RAMP CLOSURE ADVANCE INFORMATION SIGNS SHALL BE ERECTED IF THE CLOSURE TIME EXCEEDS TWENTY-FOUR (24) HOURS. ADDITIONAL ADVANCE WARNING SIGNS ON EXIT GUIDE SIGNING WILL BE REQUIRED FOR EXIT RAMP CLOSURES THAT EXCEED FOUR (4) DAYS IN LENGTH.
- ⑧ ROAD CONSTRUCTION AHEAD SIGNS MAY BE OMITTED WHEN THIS DETAIL IS USED IN CONJUNCTION WITH OTHER TRAFFIC CONTROL THAT ALREADY INCLUDES A ROAD CONSTRUCTION AHEAD SIGN.
- ⑨ ARTERIAL ROAD CONSTRUCTION AHEAD SIGNS SHALL BE INSTALLED ON THE LEFT SIDE OF TRAFFIC IF THE MEDIAN IS MORE THAN 10 FT WIDE.

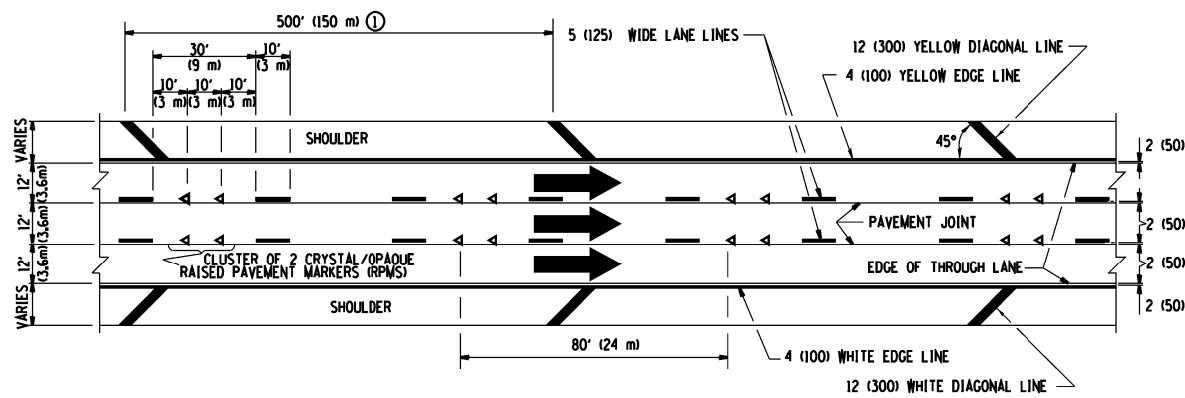
ALL DIMENSIONS ARE IN INCHES (MILLIMETERS) UNLESS OTHERWISE SHOWN.

FILE NAME =	USER NAME = pyrzenowskirb	DESIGNED - DWS	REVISED - JAF 02-06
ct:\pwork\pwork\pyrzenowskirb\d0370428\ND12614-sht-plan.dgn		DRAWN -	REVISED - SPB 01-07
	PLOT SCALE = 100.0000' / 1in.	CHECKED -	REVISED - SPB 12-09
	PLOT DATE = 2/3/2014	DATE - 02-83	REVISED - MD 06-13

**STATE OF ILLINOIS
DEPARTMENT OF TRANSPORTATION**

ENTRANCE AND EXIT RAMP CLOSURE DETAILS		F.A.I. RTE. 57	SECTION (99-2TWS)PP	COUNTY WILL	TOTAL SHEETS 18	SHEET NO. 14
SCALE: NONE	SHEET NO. 1 OF 1 SHEETS	STA.	TO STA.	CONTRACT NO. 60X55		

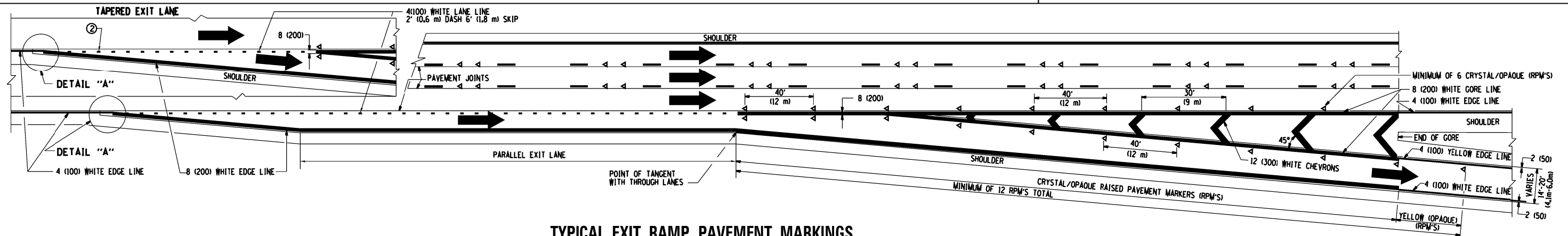
FED. ROAD DIST. NO. 1 ILLINOIS FED. AID PROJECT						
---	--	--	--	--	--	--



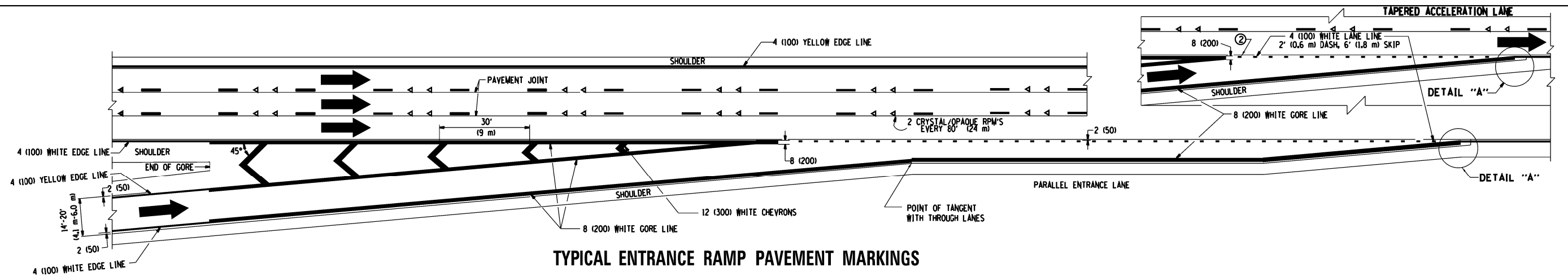
TYPICAL EDGE LINES & LANE LINES

PAVEMENT MARKING MATERIALS

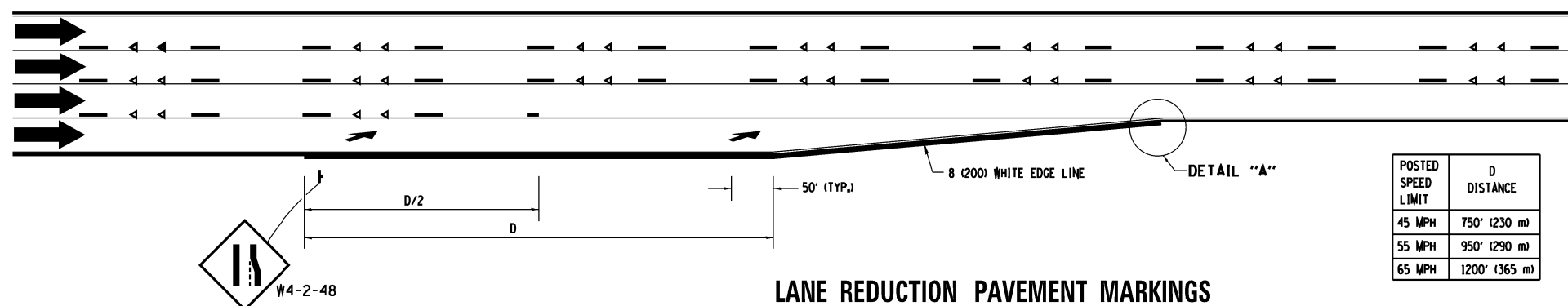
1. THERMO PLASTIC PAVEMENT MARKING LINE SHALL BE USED FOR THE EDGE LINES, GORE LINES, AND DIAGONAL LINES ON BITUMINOUS PAVEMENT ONLY.
2. PREFORMED PLASTIC TYPE B PAVEMENT MARKING LINE; INLAID OR GROOVED IN SHALL BE USED FOR ALL LANE LINES ON HMA PAVEMENT PROJECTS.
3. POLYUREA PAVEMENT MARKING SHALL BE USED FOR ALL MARKINGS ON PCC PROJECTS.



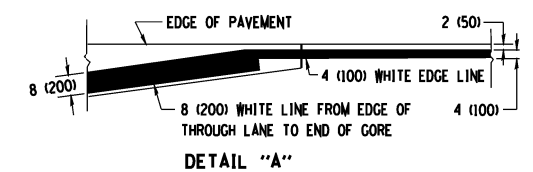
TYPICAL EXIT RAMP PAVEMENT MARKINGS



TYPICAL ENTRANCE RAMP PAVEMENT MARKINGS



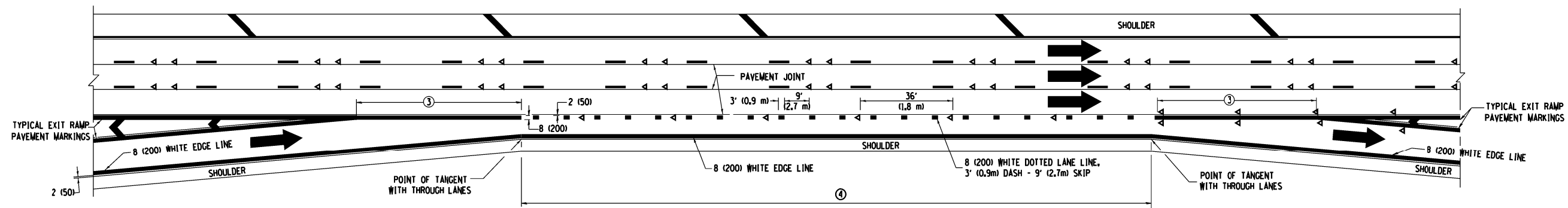
LANE REDUCTION PAVEMENT MARKINGS



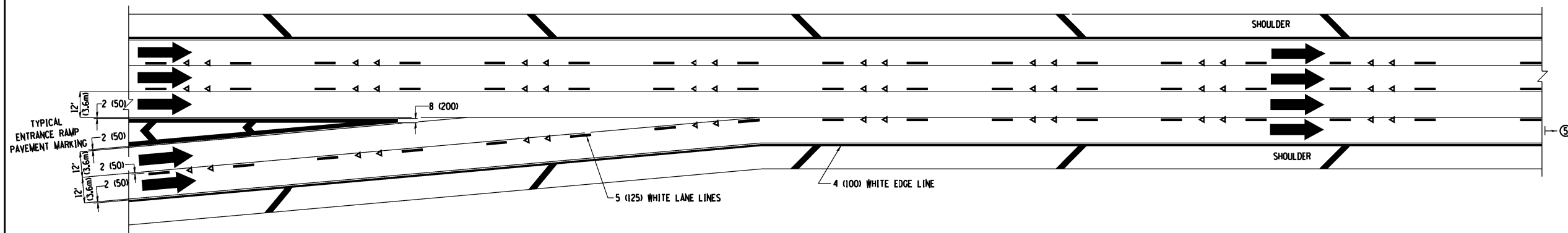
NOTES:

- ① THE DIAGONAL LINES SHALL BE SPACED AT 40' (12 m) C-C ACROSS ALL STRUCTURES WHICH ARE 500' (150 m) OR LESS IN LENGTH. THE DIAGONAL LINES ARE NOT REQUIRED ON SHOULDERS WHICH ARE 6' (1.8 m) OR LESS IN WIDTH.
- ② 4" (2' DASH, 6' SKIP) MARKING ON TAPERED ENTRANCE AND EXIT RAMP SHALL BE OMITTED ON TANGENT SECTIONS.

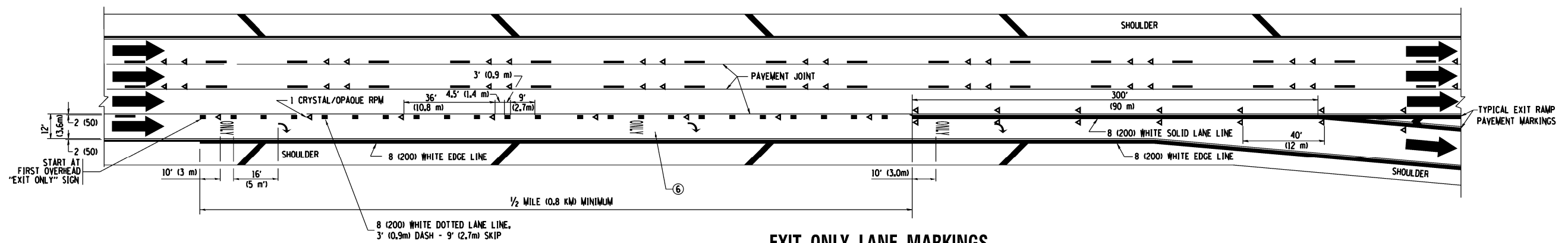
POSTED SPEED LIMIT	D DISTANCE
45 MPH	750' (230 m)
55 MPH	950' (290 m)
65 MPH	1200' (365 m)



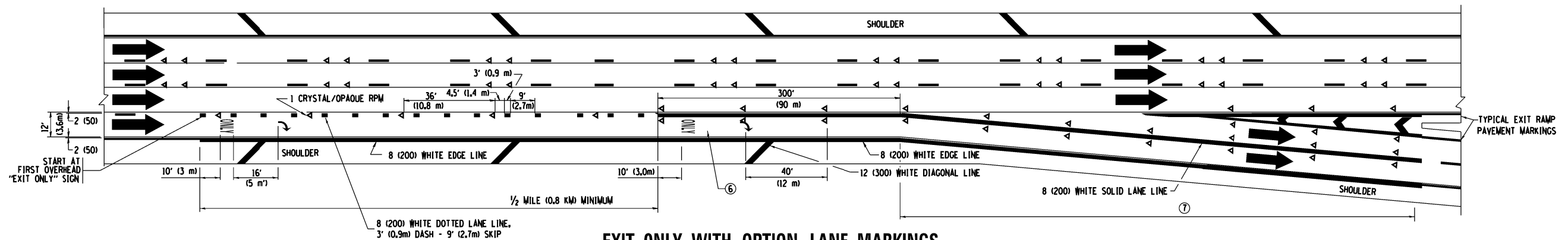
AUXILIARY LANE MARKINGS



TWO LANE ENTRANCE RAMP WITH MERGE MARKINGS



EXIT ONLY LANE MARKINGS



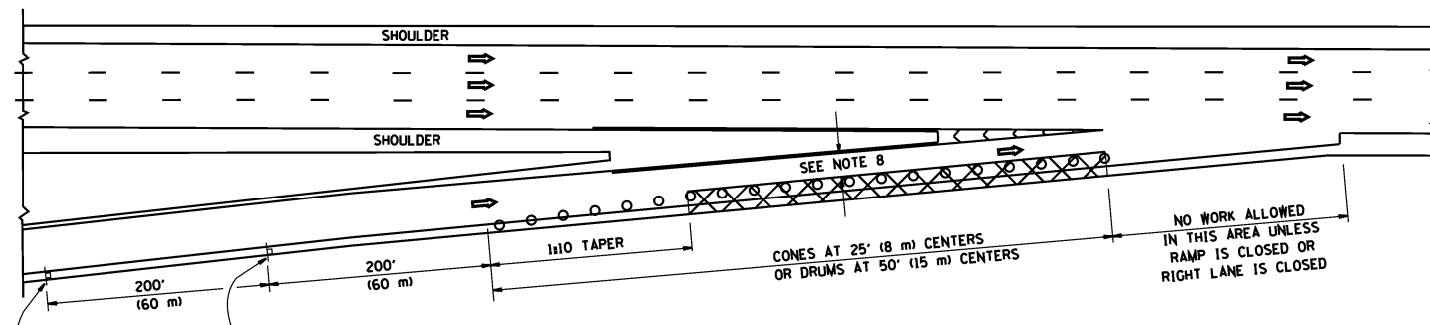
EXIT ONLY WITH OPTION LANE MARKINGS

- NOTES
- OMIT WHEN LENGTH OF AUXILIARY LANE IS LESS THAN 500' (150 m).
 - 8-INCH WIDE DOTTED LANE LINE MARKINGS SHALL BE USED WHEN THE LENGTH OF THE AUXILIARY LANE IS 2 MILES OR LESS.
 - FOR TWO-LANE ENTRANCE RAMP, IF RIGHT LANE ENDS, USE TYPICAL ENTRANCE RAMP PAVEMENT MARKINGS.
 - ONLY ARROWS EQUALLY SPACED, 500' (150 m) MAXIMUM SPACING. FULL SIZE LETTERS AND ARROW SHALL BE USED.
 - CONTINUE 8" SOLID LANE LINE THROUGH EXIT TO END OF PAVED GORE.

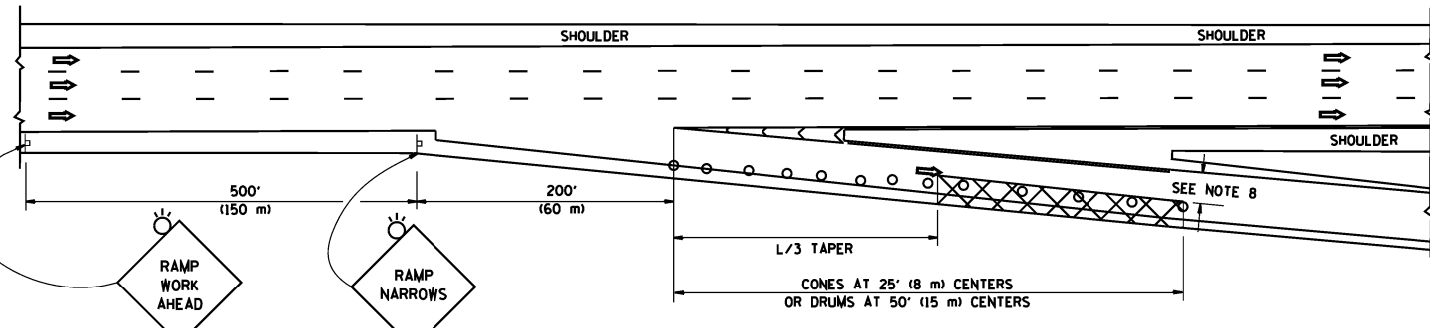
FILE NAME =	USER NAME = pyrzanowskirb	DESIGNED - D.W.S.	REVISED - D.W.S. 07-96	STATE OF ILLINOIS DEPARTMENT OF TRANSPORTATION	MULTI-LANE FREEWAY PAVEMENT MARKING DETAILS		F.A.I. RTE. =	SECTION	COUNTY	TOTAL SHEETS	SHEET NO.
ca:\pwr\work\pido\tpyrzanowskirb\d0370428\DI12614-sht-plan.dgn		DRAWN -	REVISED - J.A.F. 02-06		57	(99-27)SIPP	WILL	18	16		
PLOT SCALE = 100.0000' / 1"		CHECKED -	REVISED - S.P.B. 01-07		SCALE: NONE		SHEET NO. 2 OF 2 SHEETS	STA.	TO STA.	CONTRACT NO. 60X55	
PLOT DATE = 2/3/2014		DATE - 01-90	REVISED - S.P.B. 01-10		FED. ROAD DIST. NO. 1 ILLINOIS FED. AID PROJECT						

PARTIAL RAMP CLOSURE DETAILS

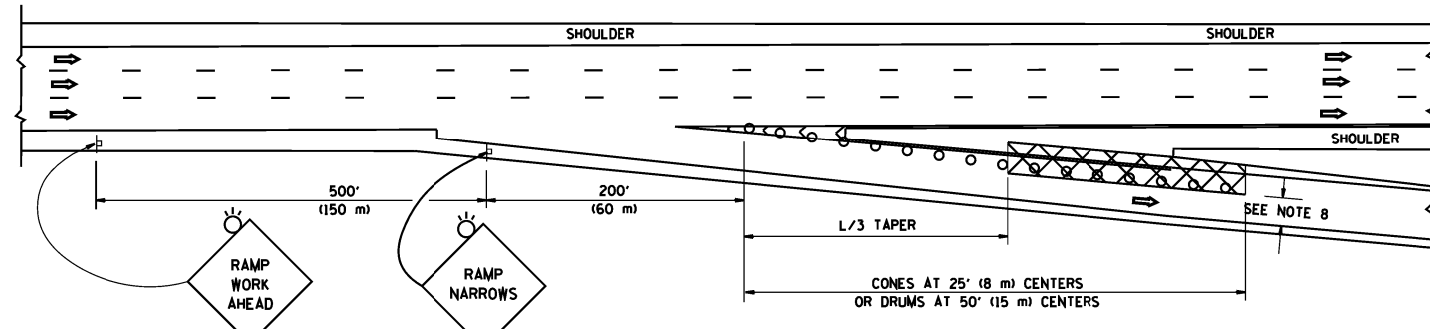
SHOULDER CLOSURE DETAILS



TYPICAL ENTRANCE RAMP



TYPICAL EXIT RAMP



TYPICAL EXIT RAMP

SYMBOLS

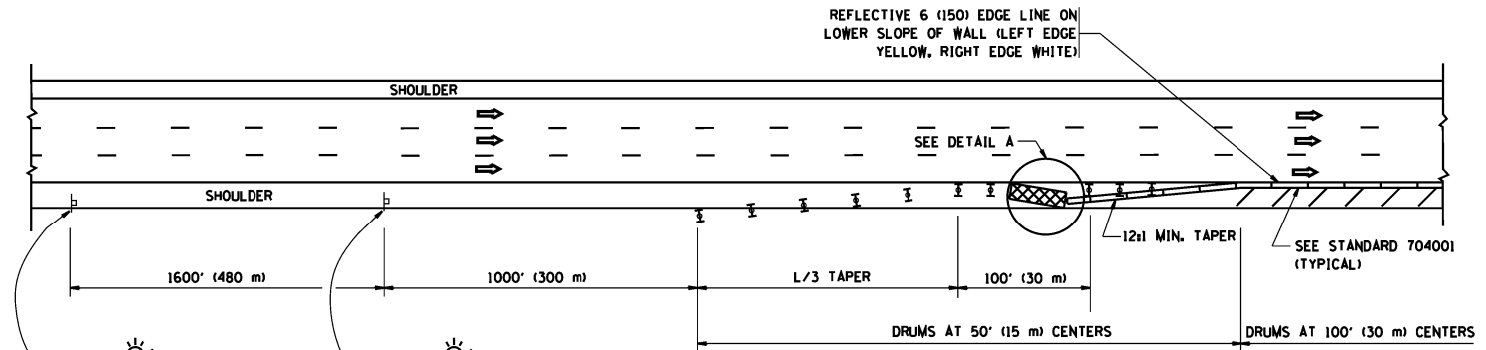
- ACTIVE WORK AREA
- SIGN ON PORTABLE OR PERMANENT SUPPORT
- FLAGGER WITH CONTROL SIGN
- TYPE II BARRICADE OR DRUM WITH STEADY BURN MONO-DIRECTIONAL LIGHT
- CONE, DRUM OR BARRICADE
- IMPACT ATTENUATOR OF TYPE AND TEST LEVEL SPECIFIED

GENERAL NOTES

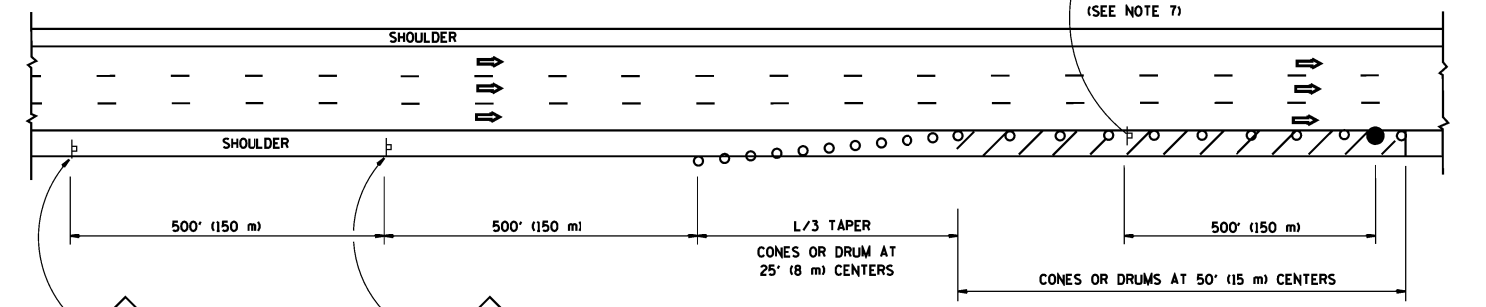
1. THE "L" DISTANCE EQUALS:

SPEED LIMIT	FORMULAS
45 mph (80 km/h) OR GREATER:	METRIC ENGLISH
	$L = 0.65(W)(S)$ $L = (W)(S)$

W = WIDTH OF OFFSET IN FEET (METERS)
S = NORMAL POSTED SPEED MPH (KM/H)
2. PLASTIC DRUMS WITH HIGH PERFORMANCE REFLECTIVE SHEETING AND STEADY BURNING LIGHTS ARE REQUIRED FOR ALL NIGHTTIME CLOSURES.
3. ALL SIGNS SHALL BE POST MOUNTED IF THE CLOSURE TIME EXCEEDS FOUR DAYS.
4. FLASHING LIGHTS SHALL BE USED DURING THE HOURS OF DARKNESS AND SHALL BE INSTALLED ABOVE THE FIRST TWO SETS OF SIGNS.



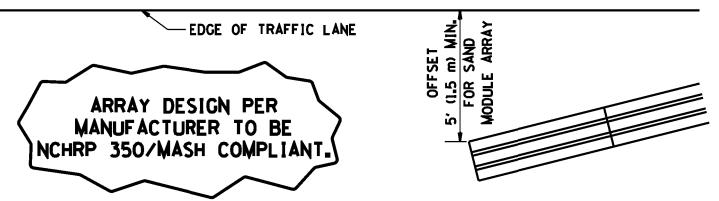
PERMANENT SHOULDER CLOSURE



DAYTIME SHOULDER CLOSURE

THIS DETAIL IS USED WHERE:

1. VEHICLES, EQUIPMENT, WORKERS OR THEIR ACTIVITIES ENCR OACH IN AN AREA CLOSER THAN 15' (4.5 m) TO THE EDGE OF PAVEMENT FOR A PERIOD IN EXCESS OF 15 MINUTES.



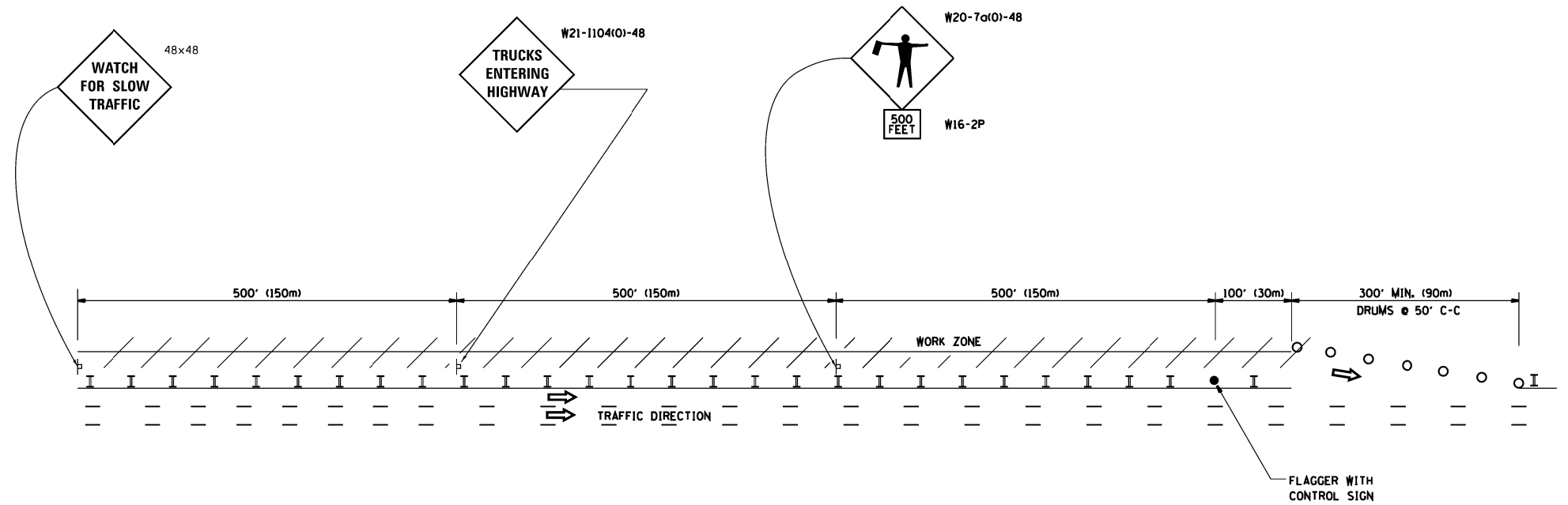
5. THE IMPACT ATTENUATOR, TEMPORARY IS NOT REQUIRED WHEN THE TEMPORARY CONCRETE BARRIER WALL IS PROTECTED BY OR IS TIED INTO THE EXISTING GUARDRAIL. IF OFFSET IS LESS THAN 5 FEET USE NARROW USE TYPE DEVICE TO MEET NCHRP350/MASH.
6. AUTHORIZATION FROM THE DISTRICT'S BUREAU OF TRAFFIC IS REQUIRED FOR ALL FREEWAY CLOSURES.
7. THE FLAGGER AND FLAGGER SIGN ARE REQUIRED AT THE ABOVE WORK SITES WHEN:
 - a. FOUR OR MORE WORK VEHICLES ENTER THE TRAFFIC LANES IN A ONE HOUR PERIOD.
 - b. THE WORK ACTIVITY REQUIRES FREQUENT ENCR OACHMENT INTO THE LANE OPEN TO TRAFFIC.
 THE FLAGGER SHALL BE STATIONED APPROXIMATELY 100' (30 m) TO 200' (60 m) IN ADVANCE OF THE WORKERS.
8. 12" MIN. WIDTH TANGENT SECTION
16" MIN. WIDTH CURVE SECTION.

ALL DIMENSIONS ARE IN INCHES (MILLIMETERS) UNLESS OTHERWISE SHOWN.

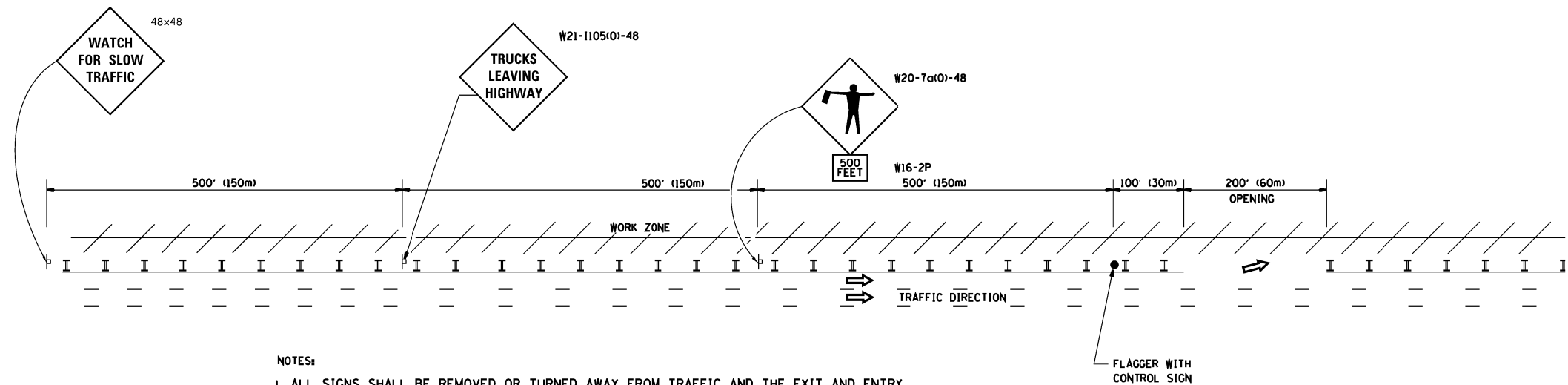
FILE NAME =	USER NAME = pyrzanowskirb	DESIGNED -	REVISED - J.A.F. 12-06	STATE OF ILLINOIS DEPARTMENT OF TRANSPORTATION	TRAFFIC CONTROL DETAILS FOR FREEWAY SHOULDER CLOSURES AND PARTIAL RAMP CLOSURES			F.A.I. RTE.	SECTION	COUNTY	TOTAL SHEETS	SHEET NO.
ct:\pwr\work\pwr\dot\pyrzanowskirb\d037042	ND112614-sht-plan.dgn	DRAWN - D.W.S.	REVISED - S.P.B. 01-07		57	(99-2T)SIPP	WILL	18	17			
PLOT SCALE = 100.0000' / 1" =		CHECKED -	REVISED - S.P.B. 12-09		TC-17			CONTRACT NO. 60X55				
PLOT DATE = 2/3/2014		DATE - 11-96	REVISED - M.D. 06-13		SCALE: NONE	SHEET NO. 1 OF 1 SHEETS	STA. TO STA.	FED. ROAD DIST. NO. 1 ILLINOIS FED. AID PROJECT				

SIGNING FOR FLAGGING OPERATIONS AT WORK ZONE OPENINGS

WORK ZONE EXIT OPENING



WORK ZONE ENTRY OPENING



NOTES:

1. ALL SIGNS SHALL BE REMOVED OR TURNED AWAY FROM TRAFFIC AND THE EXIT AND ENTRY OPENINGS SHALL BE CLOSED WHEN THE FLAGGING OPERATION CEASES. NON OPERATING EQUIPMENT SHALL COMPLY WITH ARTICLE 701.11
2. WORK ZONE OPENINGS SHALL BE A MINIMUM OF ONE HALF MILE APART AND A MINIMUM OF ONE QUARTER MILE FROM ALL ENTRANCE AND EXIT RAMP.
3. EXITING THE WORK ZONE AT ANY PLACE OTHER THAN AT A WORK ZONE EXIT OPENING WILL BE PROHIBITED.
4. ALL VEHICLES SHALL ENTER THE WORK ZONE AT ENTRY OPENINGS, USING THEIR TURN SIGNALS TO WARN MOTORISTS
5. FLAGGERS SHALL NOT STOP TRAFFIC OR DIRECT TRAFFIC INTO AN ADJACENT LANE.

ALL DIMENSIONS ARE IN INCHES (MILLIMETERS) UNLESS OTHERWISE SHOWN

FILE NAME =	USER NAME = pyrzenowskirb	DESIGNED -	REVISOR - J.A.F. 02-06	STATE OF ILLINOIS DEPARTMENT OF TRANSPORTATION	FREEWAY/EXPRESSWAY SIGNING FOR FLAGGING OPERATIONS AT WORK ZONE OPENINGS ON FREEWAYS/EXPRESSWAYS	F.A.I. RTE.	SECTION	COUNTY	TOTAL SHEETS	SHEET NO.	
ct:\pwork\pwork\pyrzenowskirb\d0370428\DI12614-sht-plan.dgn	NDI12614-sht-plan.dgn	DRAWN -	REVISOR - S.P.B. 01-07			57	199-2TWSJPP	WILL	18	18	
PLOT SCALE = 100.0000' / in.		CHECKED -	REVISOR - S.P.B. 12-09			TC-18		CONTRACT NO. 60X55			
PLOT DATE = 2/3/2014		DATE -	REVISOR - M.D. 06-13			SCALE: NONE		SHEET NO. 1 OF 1 SHEETS		STA. TO STA.	
FED. ROAD DIST. NO. 1 ILLINOIS FED. AID PROJECT											