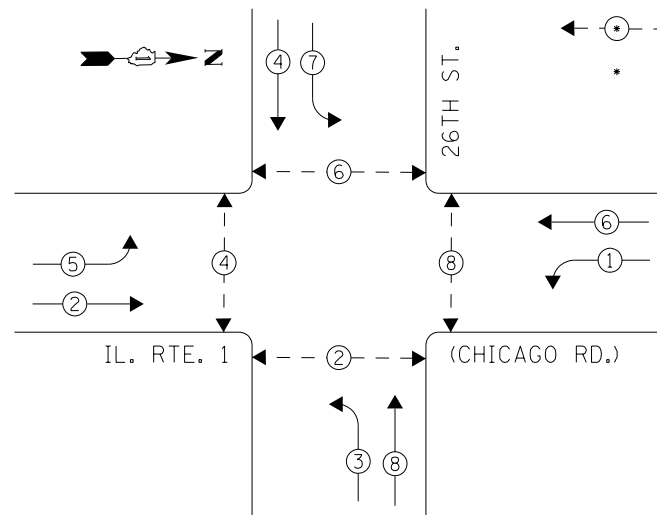
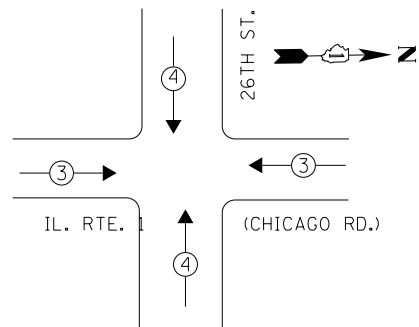


EXISTING CONTROLLER SEQUENCE



PHASE DESIGNATION DIAGRAM

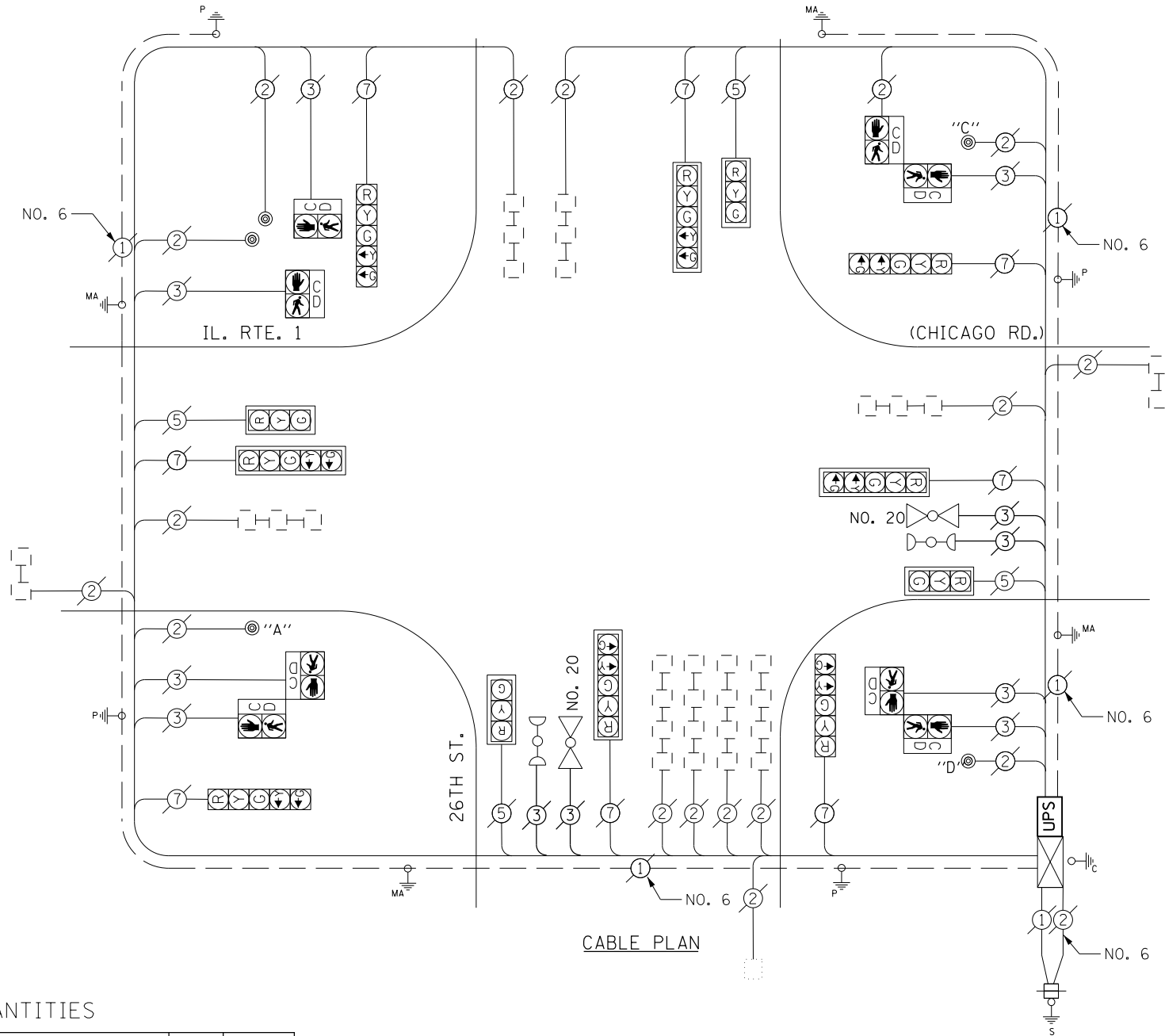


EXISTING EMERGENCY VEHICLE PREEMPTION SEQUENCE

EMERGENCY VEHICLE PREEMPTORS		
EMERGENCY VEHICLE PREEMPTOR	3	4
MOVEMENT	← →	↓ ↑

LEGEND

- ← ⊙ → DUAL ENTRY PHASE
- ← ⊙ PEDESTRIAN PHASE
- * NUMBER REFERS TO ASSOCIATED PHASE



CABLE PLAN

SCHEDULE OF QUANTITIES

Items	Unit	Quantity
MAINTENANCE OF EXISTING TRAFFIC SIGNAL INSTALLATION	EACH	1
MODIFY EXISTING CONTROLLER CABINET	EACH	1
UNINTERRUPTABLE POWER SUPPLY, SPECIAL	EACH	1

PUSHBUTTON NOTES:

- PUSHBUTTON "A" SHALL PLACE A CALL IN PHASES 2 AND 4.
- PUSHBUTTON "C" SHALL PLACE A CALL IN PHASES 6 AND 8.
- PUSHBUTTON "D" SHALL PLACE A CALL IN PHASES 2 AND 8.

I. D. O. T.
TRAFFIC SIGNAL INSTALLATION
ELECTRICAL SERVICE REQUIREMENTS

TYPE	NO. LAMPS	WATTAGE INCAND.	WATTAGE LED	%OPERATION	TOTAL WATTAGE
SIGNAL (RED)	12		17	0.50	102.0
(YELLOW)	12		25	0.25	75.0
(GREEN)	12		15	0.25	45.0
ARROW	16		12	0.10	19.2
PED. SIGNAL	8		25	1.00	200.0
CONTROLLER	1	100		1.00	100.0
BATTERY BACKUP	1	25		1.00	25.0

TOTAL = 566.2

ENERGY COSTS- BILLED TO: IDOT DISTRICT 1
201 WEST CENTER COURT
SCHAUMBURG, IL 60196-1096

ENERGY SUPPLY- CONTACT BRAD SHINABARGAR
PHONE 708-325-2692
COMMONWEALTH EDISON

ACCESS TO INSIDE OF CONTROLLER CABINET BY DESIGNER WAS NOT POSSIBLE PRIOR TO CONSTRUCTION. CONTRACTOR SHALL COORDINATE CONTROLLER AND CABINET TYPE WITH ENGINEER PRIOR TO ORDERING UPS MATERIALS AND EQUIPMENT. CONTRACTOR SHALL INSTALL UPS IF APPROVED BY THE ENGINEER, AS DIRECTED BY THE ENGINEER.

TS 1780
CHICAGO HEIGHTS

FILE NAME = D160X64-shr-TS1780.dgn	USER NAME = SE3	DESIGNED - WSA	REVISED -
Default	PLOT SCALE = 48.0000' / in.	DRAWN - WSA	REVISED -
	PLOT DATE = 2/3/2014	CHECKED - BKS	REVISED -
		DATE - \$SUBDATE	REVISED -

STATE OF ILLINOIS
DEPARTMENT OF TRANSPORTATION

IL. RTE. 1 (CHICAGO RD.)/26TH STREET - CABLE PLAN AND
SCHEDULE OF QUANTITIES, PHASE DESIG. DIAGRAM & EVP SEQUENCE

SCALE: SHEET OF SHEETS STA. TO STA.

F.A. RTE.	SECTION	COUNTY	TOTAL SHEETS	SHEET NO.
	2013-075TS	COOK	78	39
CONTRACT NO. 60X64			ILLINOIS FED. AID PROJECT	