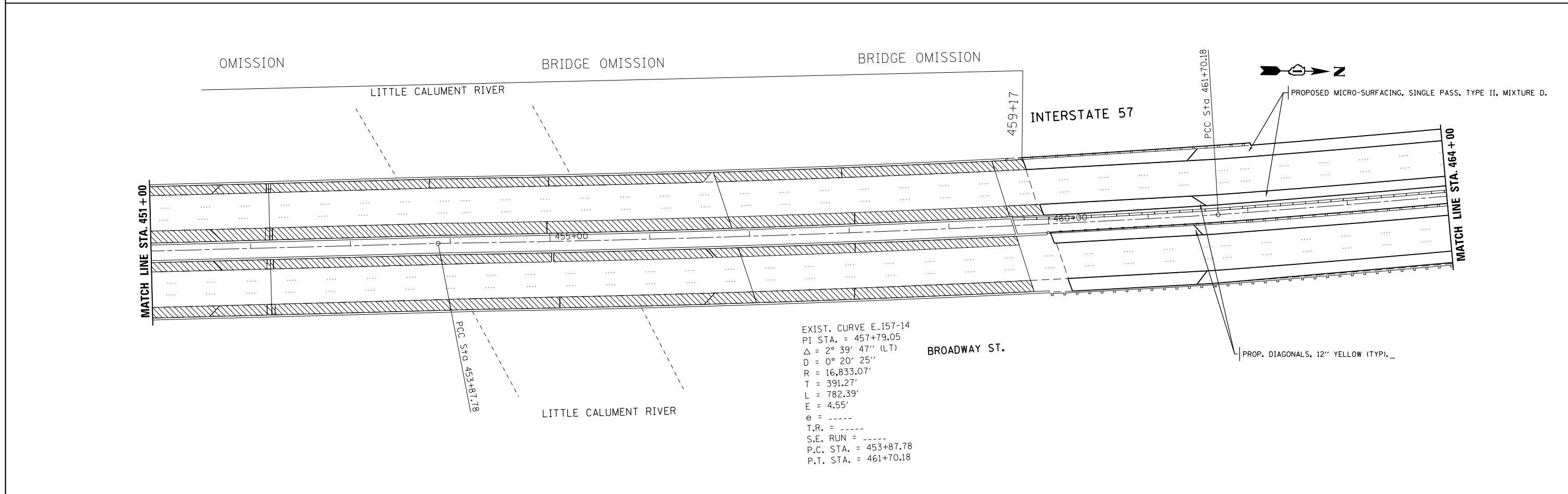


EXIST. CURVE E.I57-13
 PI STA. = 448+50.14
 $\Delta = 0^\circ 33' 38''$ (LT)
 $D = 0^\circ 03' 08''$
 $R = 109,935.63'$
 $T = 537.65'$
 $L = 1,075.30'$
 $E = 1.31'$
 $e = \text{-----}$
 $T.R. = \text{-----}$
 $S.E. \text{ RUN} = \text{-----}$
 $P.C. \text{ STA.} = 443+12.49$
 $P.T. \text{ STA.} = 453+87.78$



EXIST. CURVE E.I57-14
 PI STA. = 457+79.05
 $\Delta = 2^\circ 39' 47''$ (LT)
 $D = 0^\circ 20' 25''$
 $R = 16,833.07'$
 $T = 391.27'$
 $L = 782.39'$
 $E = 4.55'$
 $e = \text{-----}$
 $T.R. = \text{-----}$
 $S.E. \text{ RUN} = \text{-----}$
 $P.C. \text{ STA.} = 453+87.78$
 $P.T. \text{ STA.} = 461+70.18$

FILE NAME =	USER NAME = Bakerom	DESIGNED -	REVISED -
c:\pwork\pwork\pwork\pwork\d0370686\011614-shit-plan.dgn		DRAWN -	REVISED -
Default	PLOT SCALE = 100.0000' / in.	CHECKED -	REVISED -
	PLOT DATE = 2/21/2014	DATE -	REVISED -

**STATE OF ILLINOIS
 DEPARTMENT OF TRANSPORTATION**

ROADWAY PLAN			
INTERSTATE 57 (FROM N. OF 175TH ST. TO IL ROUTE 1)			
SCALE:	SHEET	OF SHEETS	STA. TO STA.

F.A.I. RTE.	SECTION	COUNTY	TOTAL SHEETS	SHEET NO.
57	2013-079I	COOK	32	18
CONTRACT NO. 60X67				
ILLINOIS FED. AID PROJECT				