

F.A.I. RTE.	SECTION	COUNTY	TOTAL SHEETS	SHEET NO.
55	2014-009SG	COOK	32	1
ILLINOIS			CONTRACT NO. 60X90	

STATE OF ILLINOIS
DEPARTMENT OF TRANSPORTATION
DIVISION OF HIGHWAYS

FOR INDEX OF SHEETS, SEE SHEET NO. 2

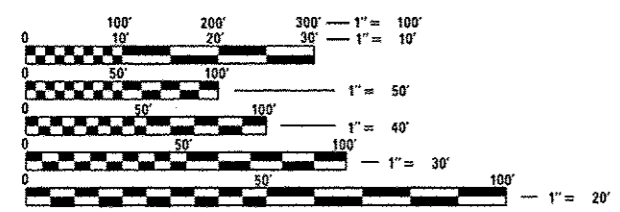
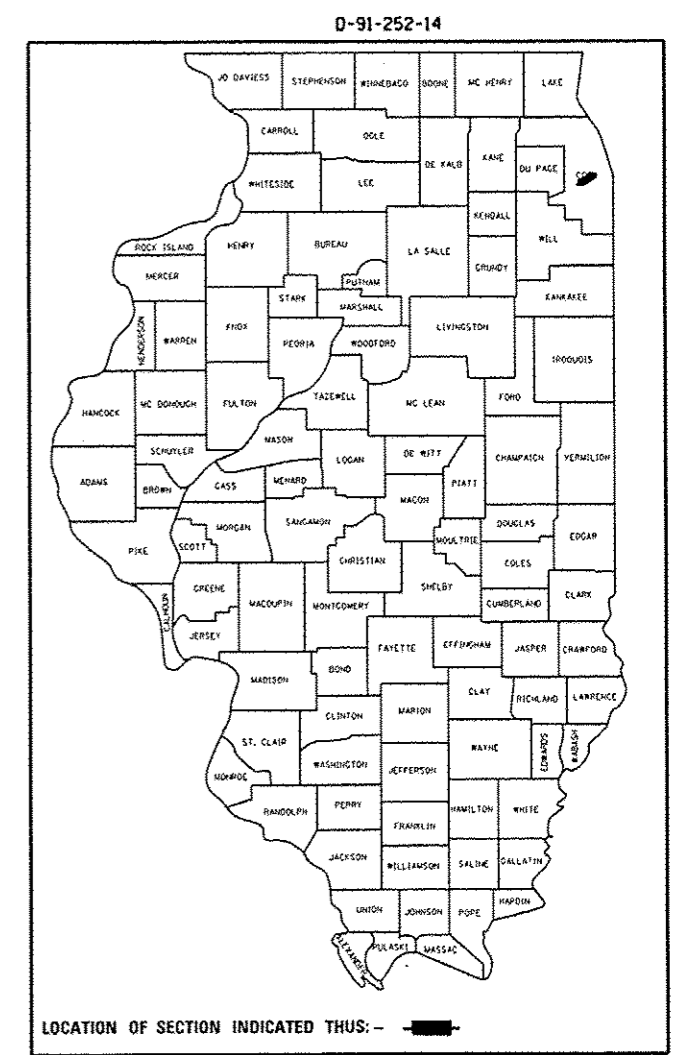
PROJECT IS LOCATED IN THE CITY OF CHICAGO

TRAFFIC DATA:

2010 ADT = 100,800 - 178,800
 SPEED LIMIT = 55 MPH

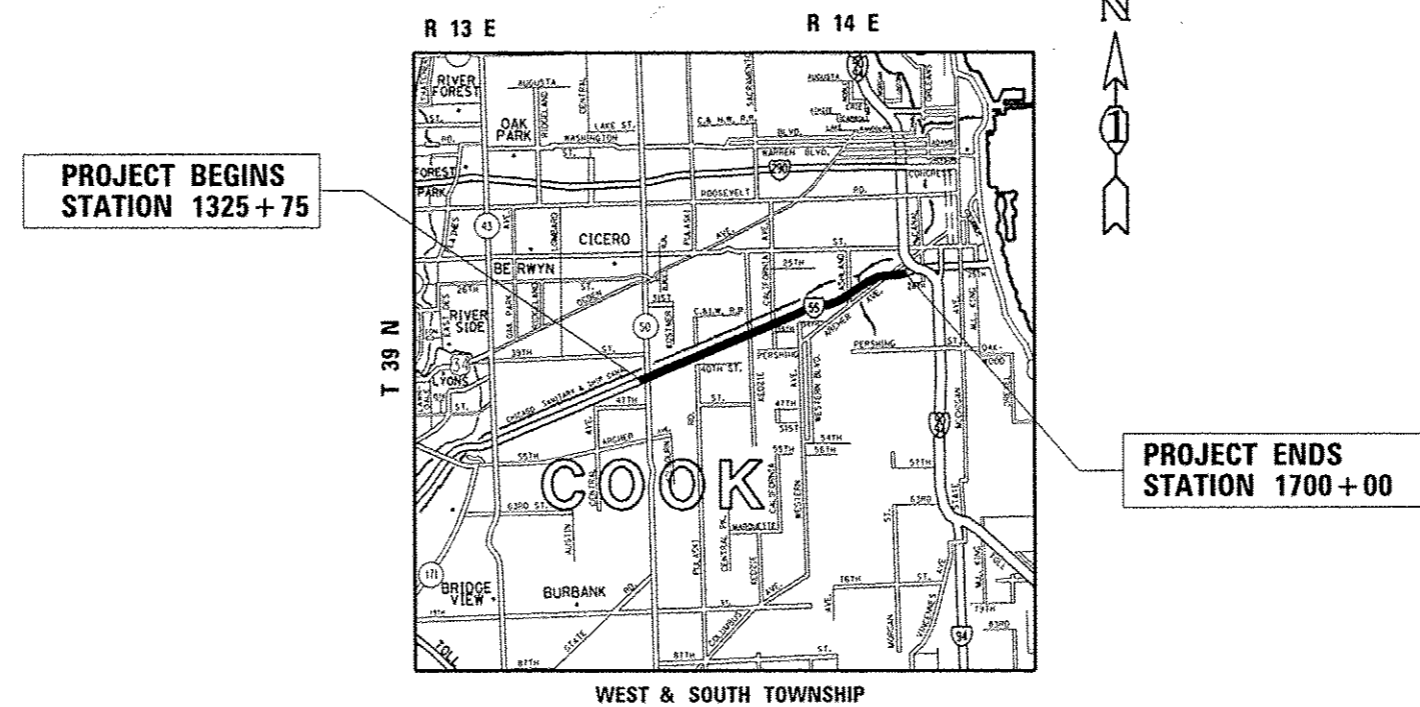
PROPOSED HIGHWAY PLANS

**FAI 55: I-55 (STEVENS ON EXPRESSWAY)
 IL 50 (CICERO AVE.) TO I-90/94
 SECTION: 2014-009SG
 RESURFACING (INSIDE SHOULDERS),
 PAVEMENT MARKING AND SIGNAGE
 PROJECT: ACCM-0055(406)
 COOK COUNTY
 C-91-252-14**



FULL SIZE PLANS HAVE BEEN PREPARED USING STANDARD ENGINEERING SCALES. REDUCED SIZED PLANS WILL NOT CONFORM TO STANDARD SCALES. IN MAKING MEASUREMENTS ON REDUCED PLANS, THE ABOVE SCALES MAY BE USED.

J.U.L.I.E.
 JOINT UTILITY LOCATION INFORMATION FOR EXCAVATION
 1-800-892-0123
 OR 811



GROSS AND NET LENGTH OF PROJECT = 37,425.00 FT. = 7.09 MILES

PROJECT MANAGER: KEN ENG
 PROJECT ENGINEER: JENPAI CHANG (847) 705 - 4432

CONTRACT NO. 60X90

STATE OF ILLINOIS
 DEPARTMENT OF TRANSPORTATION
 DIVISION OF HIGHWAYS

SUBMITTED *February 24, 2014*

John F. [Signature]
 DEPUTY DIRECTOR OF HIGHWAYS, REGION ENGINEER

March 21, 2014
John D. Baranzolli, P.E. [Signature]
 acting ENGINEER OF DESIGN AND ENVIRONMENT

March 21, 2014
Omer Osman, P.E. [Signature]
 DIRECTOR OF HIGHWAYS, CHIEF ENGINEER

PRINTED BY THE AUTHORITY OF THE STATE OF ILLINOIS