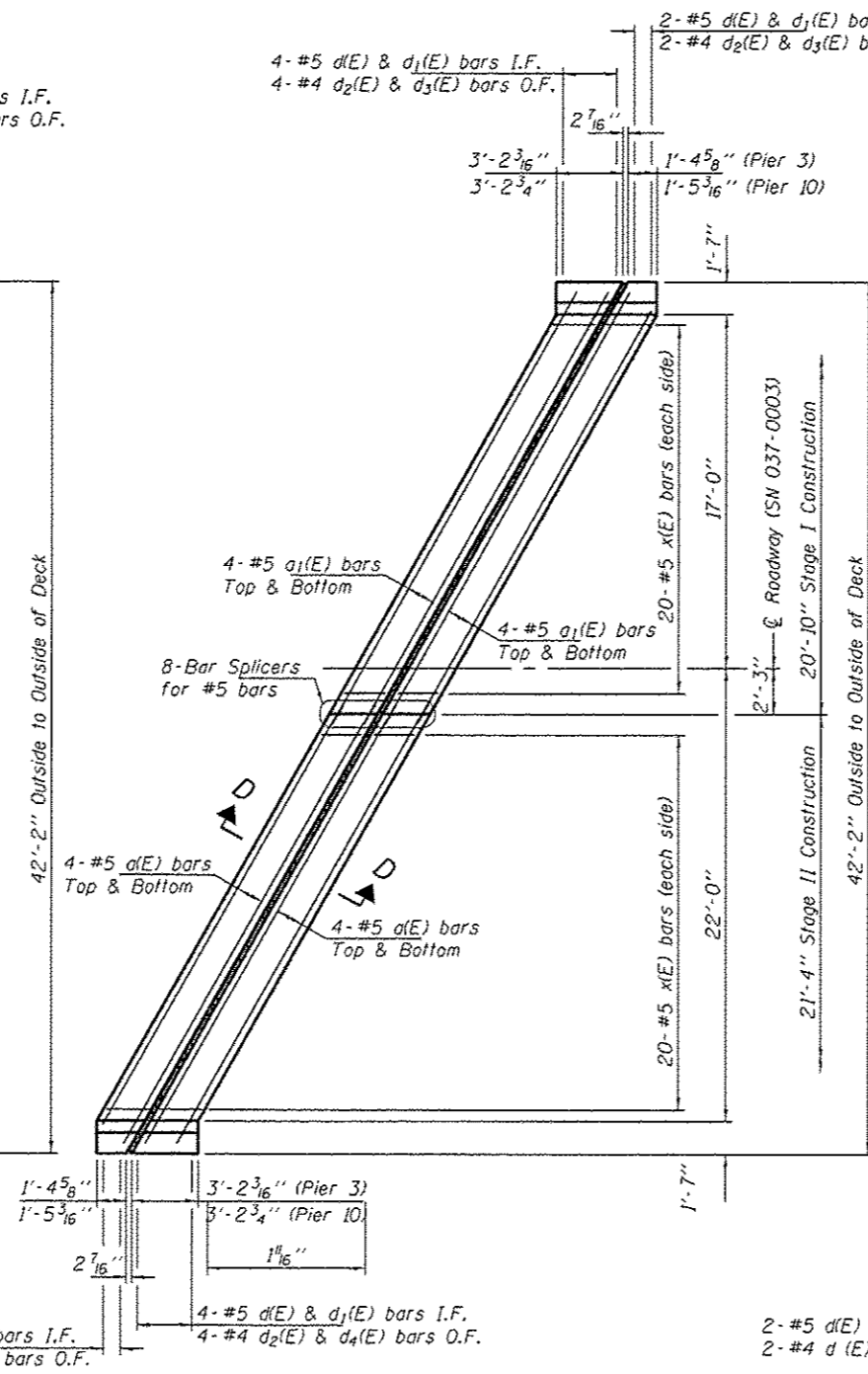
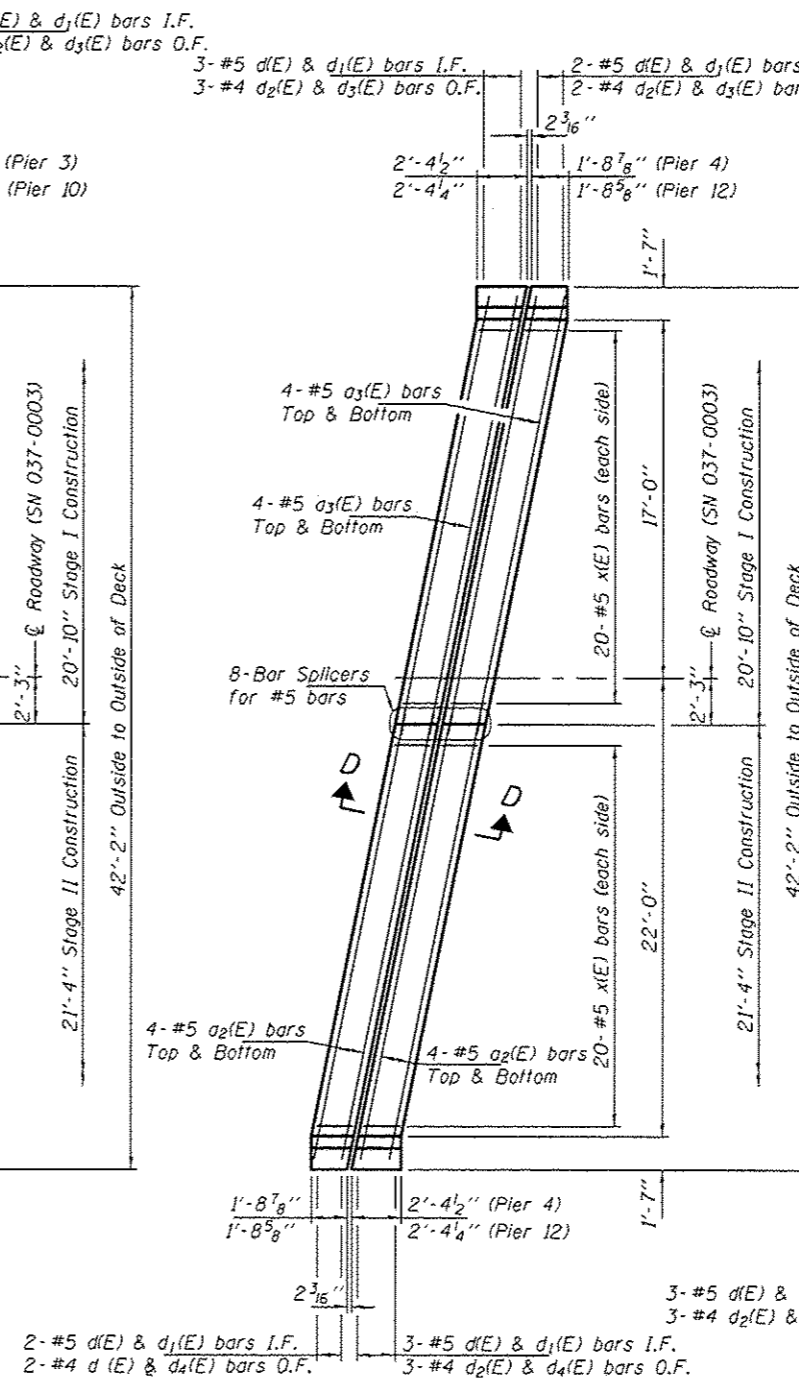


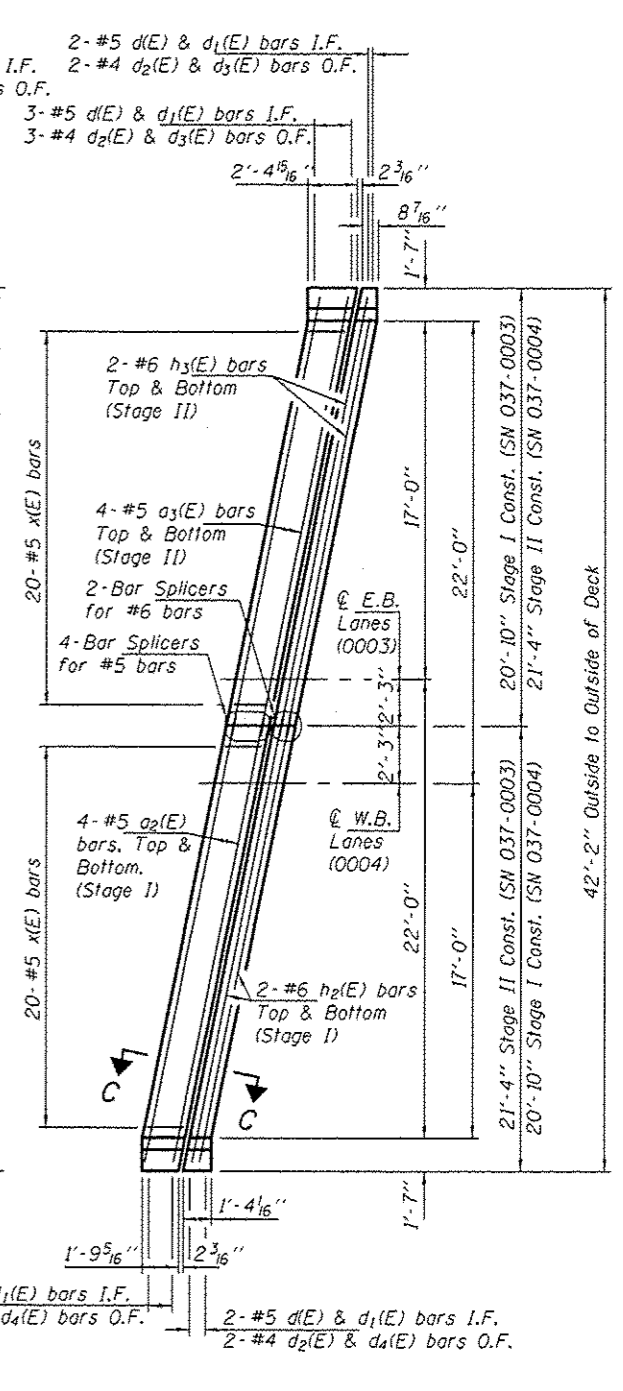
PARTIAL PLAN AT W. ABUTMENTS



PARTIAL PLAN AT PIER 10  
Pier 3 similar by 180° rotation



PARTIAL PLAN AT PIER 12  
Pier 4 similar by 180° rotation



PARTIAL PLAN AT E. ABUTMENTS

Note:  
For Sections C-C & D-D, see sheet 4 of 8.

DESIGNED GGE	EXAMINED	DATE MARCH 6, 2014	STATE OF ILLINOIS DEPARTMENT OF TRANSPORTATION		SUPERSTRUCTURE DETAILS SN 037-0003 & 0004		F.A.J. RTE.	SECTION	COUNTY	TOTAL SHEETS	SHEET NO.
CHECKED VHV	PASSED		TIMOTHY A. ALBERT ACTING ENGINEER OF STRUCTURAL SERVICES		SHEET NO. 3 OF 8 SHEETS		14	137-1MBRM	HENRY	21	22
DRAWN Kyle M. Steffen			KYLE M. STEFFEN ACTING ENGINEER OF BRIDGES AND STRUCTURES		ILLINOIS FED. AID PROJECT		CONTRACT NO. 64E94				
CHECKED GGE VHV											