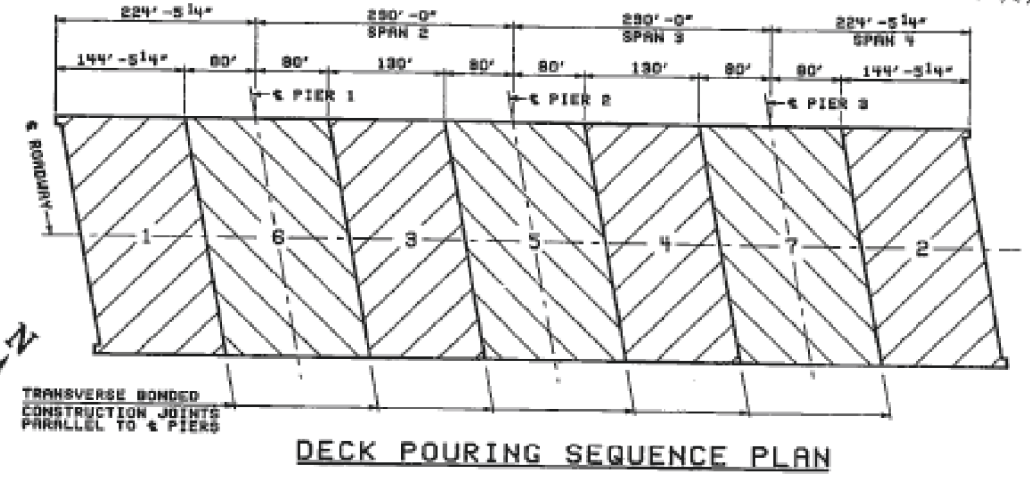
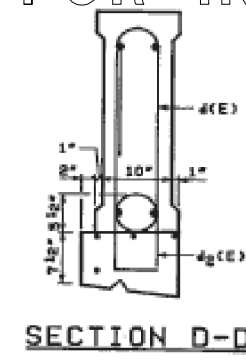
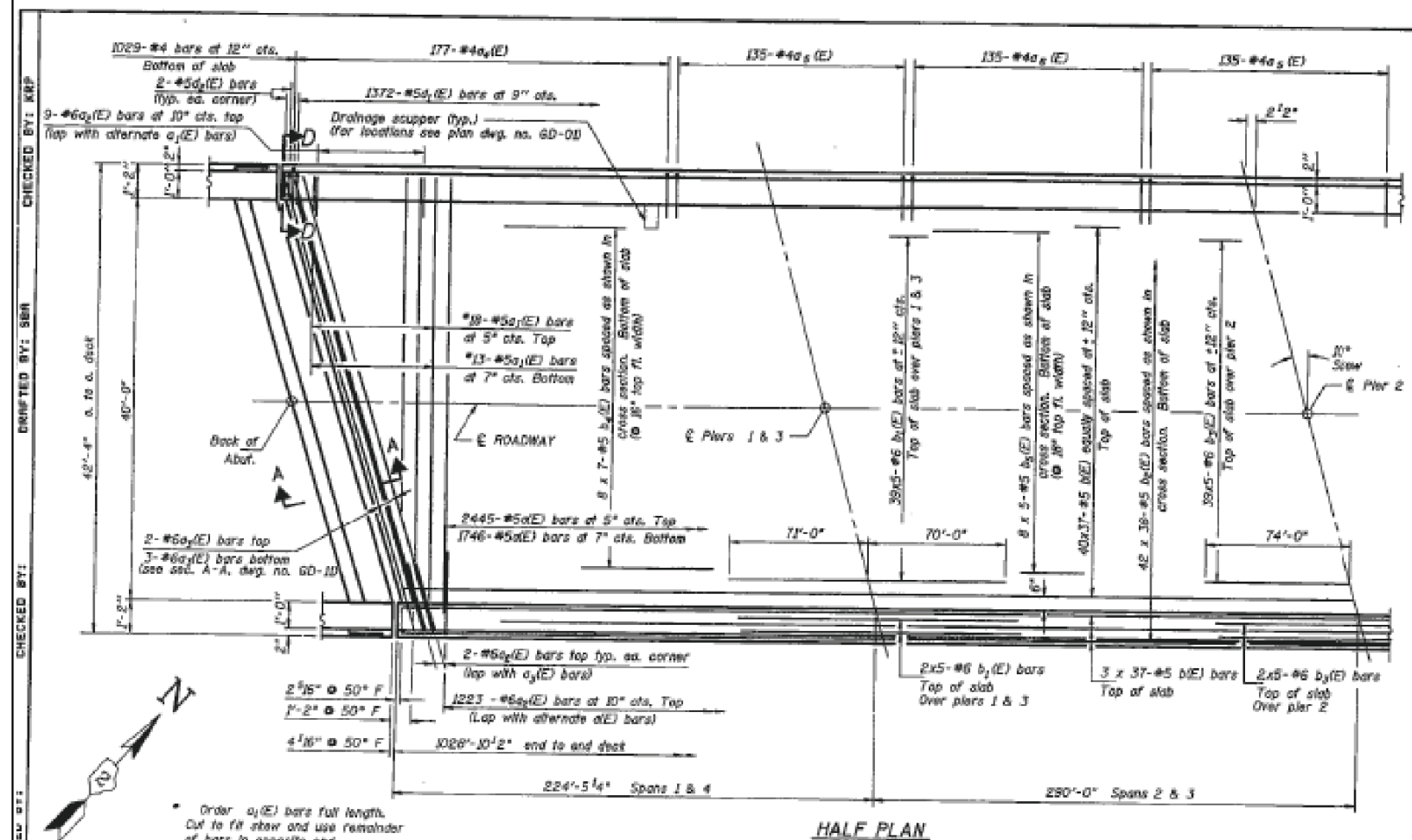


FOR INFORMATION ONLY

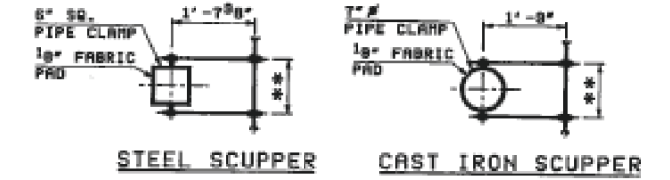
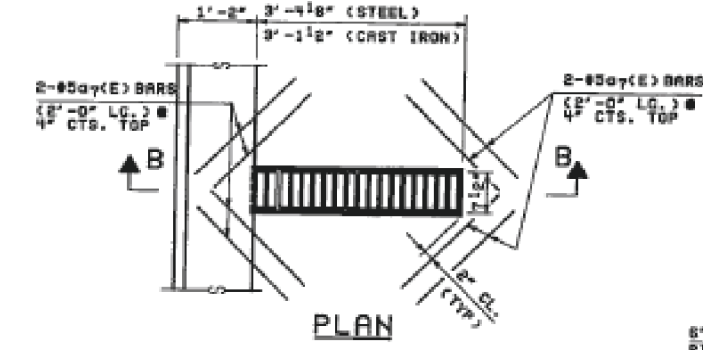
SHEET NO. 7 OF 30

ROUTE NO.	SECT.	COUNTY	SHEET NO.	TOTAL SHEETS
F.A. 742	203B-1	LEE & OGLE	86	31
FED. ROAD DIST. NO. 7		ILLINOIS	FED. AID PROJECT	
STP-BNF-742(2B)				



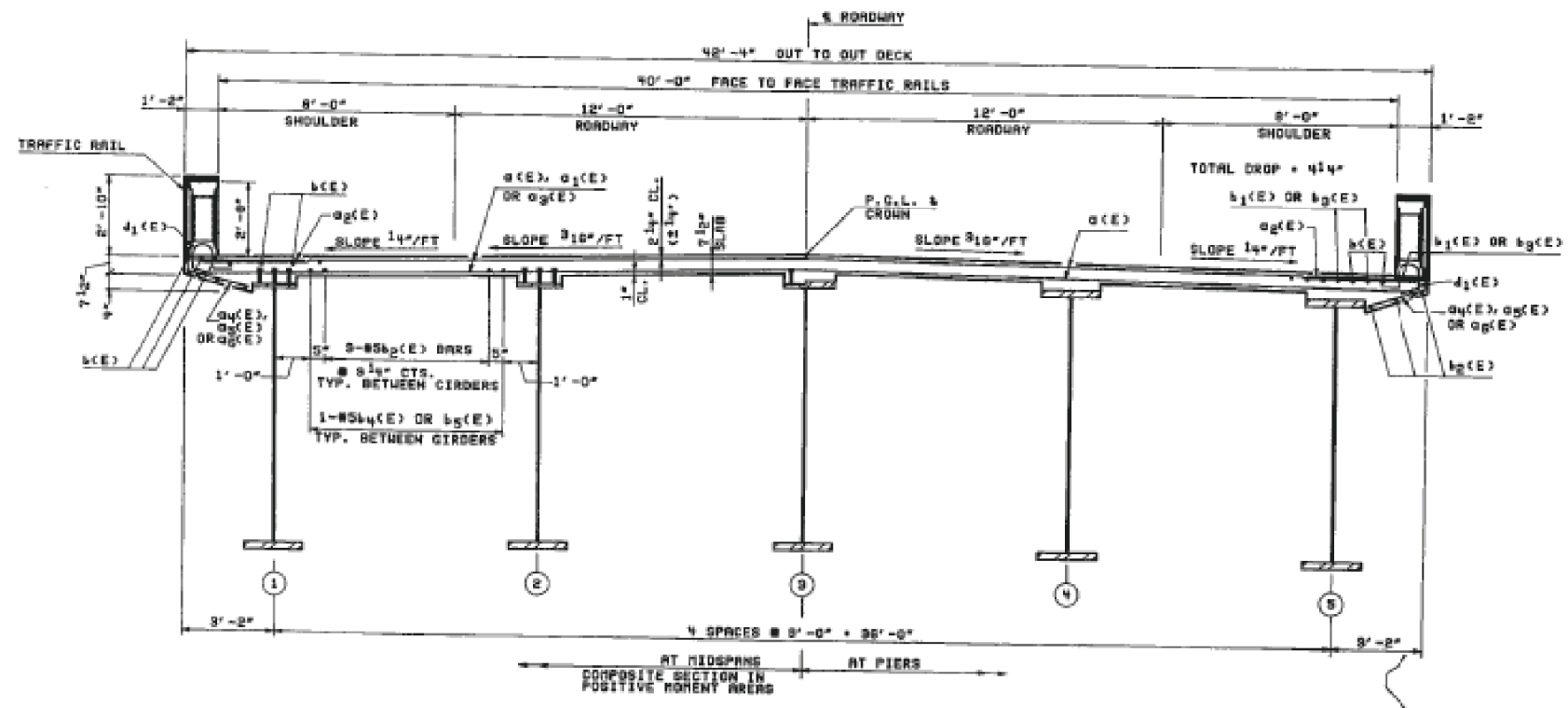
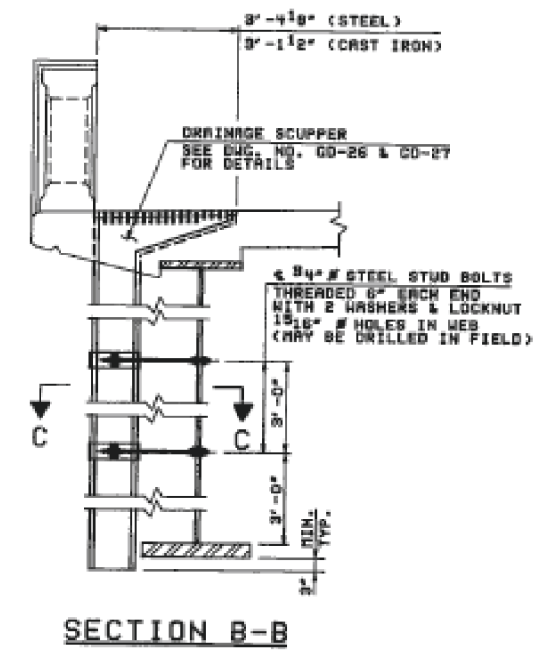
**NOTES: (DECK POURING)**

- POURING SEQUENCES SHALL BE AS SHOWN ABOVE. SEQUENCES 1 & 2 AND 3 & 4 MAY BE CAST SIMULTANEOUSLY.
- WHEN THE DECK POUR IS STOPPED FOR THE DAY AT ONE OR MORE OF THE TRANSVERSE BONDED CONSTRUCTION JOINTS IN THE DECK POURING SEQUENCE AS SHOWN, THE NEXT POUR SHALL NOT BE MADE UNTIL BOTH OF THE FOLLOWING REQUIREMENTS ARE MET:
  - AT LEAST 72 HOURS SHALL HAVE LAPSED FROM THE END OF THE PREVIOUS POUR.
  - THE CONCRETE STRENGTH SHALL HAVE ATTAINED A MINIMUM MODULUS OF RUPTURE OF 850 P.S.I. OR A MINIMUM COMPRESSIVE STRENGTH OF 3500 P.S.I.



**NOTES:**

- REINFORCEMENT BARS DESIGNATED (E) SHALL BE EPOXY COATED.
  - BARS INDICATED THUS  $20\#3-05$  ETC. INDICATES 20 LINES OF BARS WITH 3 LENGTHS PER LINE.
  - FOR TRAFFIC RAIL DETAILS AND BILL OF MATERIAL SEE DNG. NO. GD-10.
  - FOR SECTION A-A & FINGER PLATE EXPANSION JT. DETAILS SEE DNG. NO. GD-11.
  - SCUPPERS SHALL BE LOCATED CLEAR OF ALL CROSS FRAMES AND SHEAR STUDS.
- MIN. BAR LAP  
 $\#5$  BAR = 2'-2"  
 $\#6$  BAR = 2'-7"



STATE OF ILLINOIS  
 DEPARTMENT OF TRANSPORTATION

**DECK DETAILS**

GRAND DETOUR BRIDGE  
 OVER ROCK RIVER  
 F.A. RTE. 742 SECTION 398B-1  
 STA. 1228+96 LEE & OGLE COUNTIES  
 STRUCTURE NUMBER 052-0063

STEINMAN BOYNTON INC.  
 CONSULTING ENGINEERS - CHICAGO, ILLINOIS

DRAWING NO.	SCALE	DATE	SHEET NO.
GD-09	N. T. S.	4-19-93	31

REVISION	DATE	DESCRIPTION

DESIGNED -	REVISD -
DRAWN -	REVISD -
CHECKED -	REVISD -
DATE -	REVISD -

STATE OF ILLINOIS  
 DEPARTMENT OF TRANSPORTATION

EXISTING BRIDGE PLANS  
 SN: 052-0063

F.A.P. RTE.	SECTION	COUNTY	TOTAL SHEETS	SHEET NO.
IL 2 D2	BRIDGE PAINTING 2014-1	LEE / OGLE	25	11
CONTRACT NO. 64J52				
ILLINOIS				