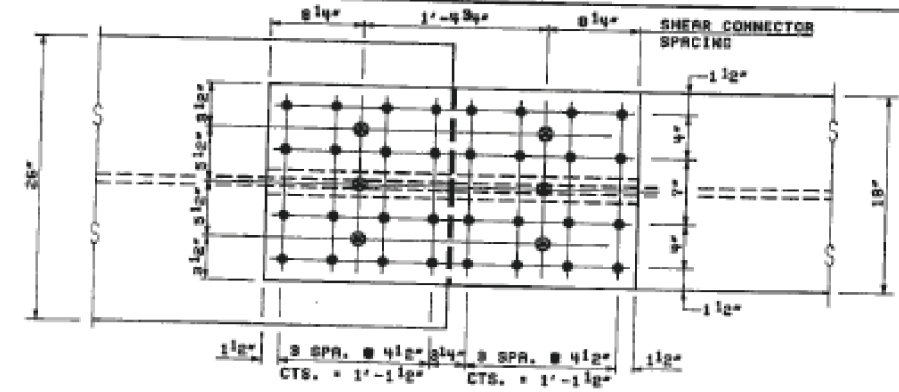


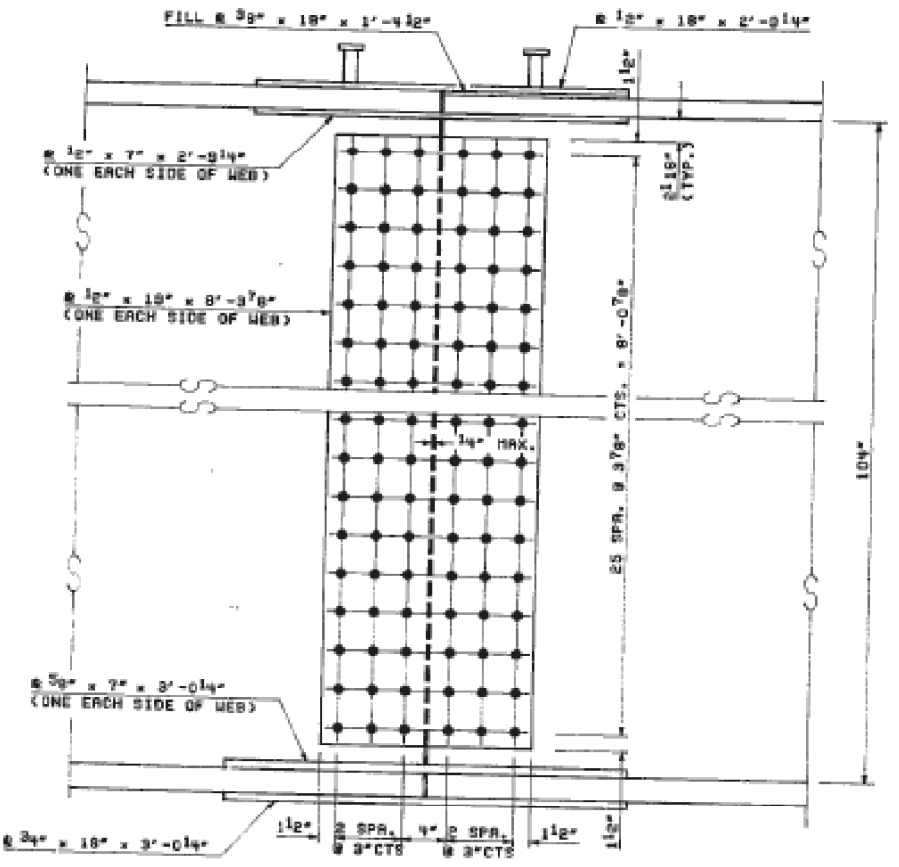
| | | | | |
|-----------------------|--------|------------|---------------------------|--------------|
| ROUTE NO. | SECT. | COUNTY | SHEET NO. | TOTAL SHEETS |
| F.A. 742 | 398B-1 | LEE & OGLE | 86 | 37 |
| FED. ROAD DIST. NO. 2 | | | ILLINOIS FED. AID PROJECT | |
| STP-DRF-742(13) | | | | |

CHECKED BY: KRP

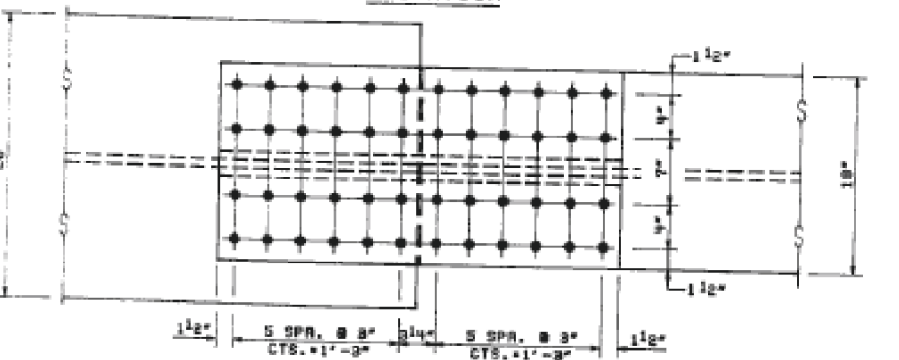
DRAFTED BY: SBR



TOP PLAN

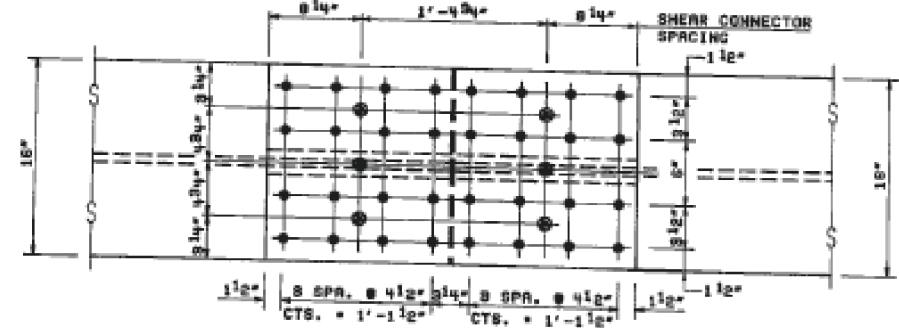


ELEVATION

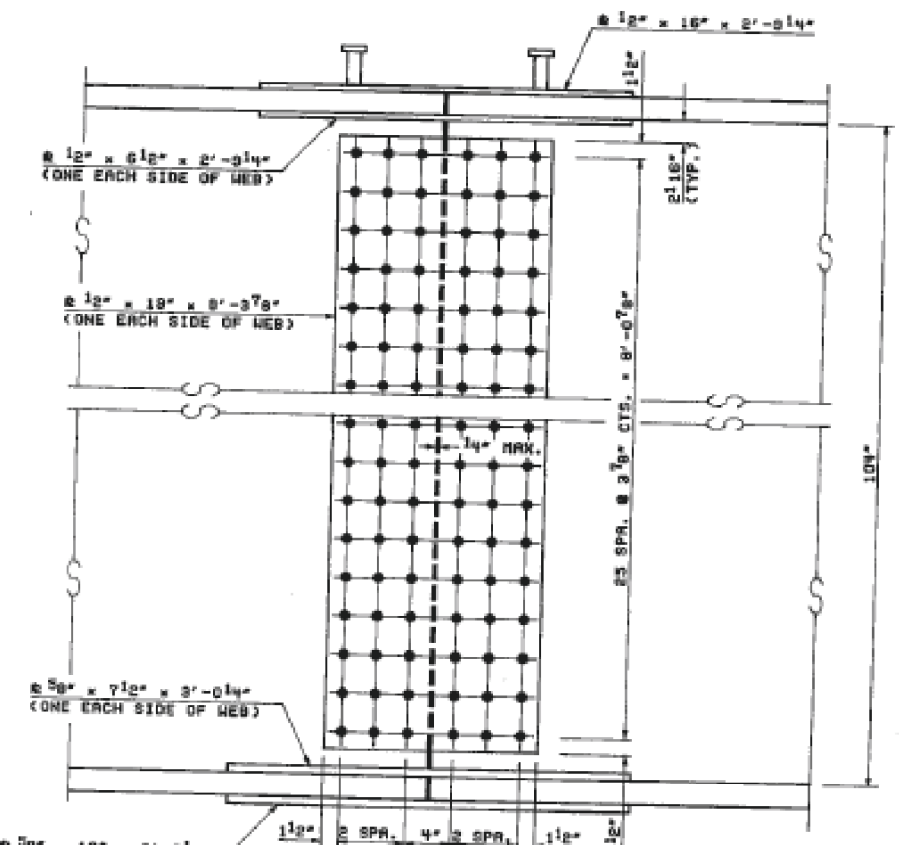


BOTTOM PLAN

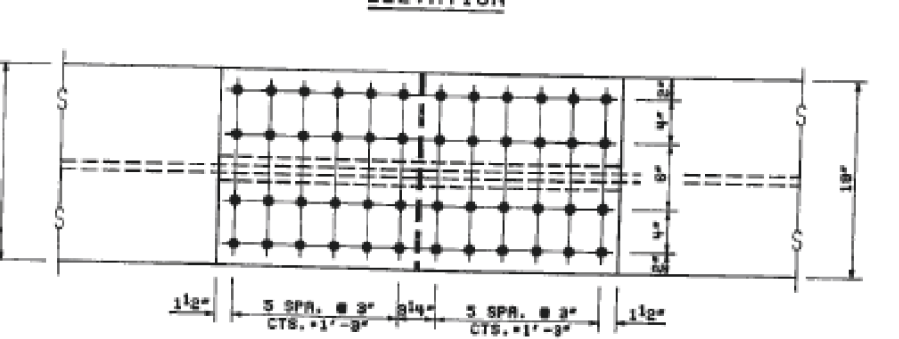
FIELD SPLICES #3 & #6



TOP PLAN

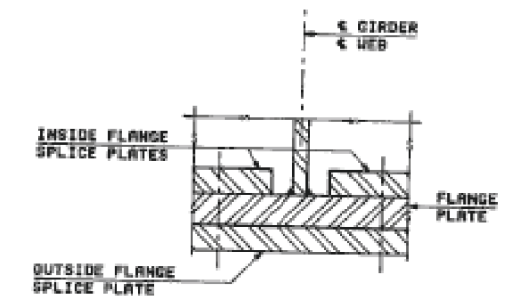


ELEVATION



BOTTOM PLAN

FIELD SPLICES #1 & #8



TYPICAL SPLICE SECTION

- NOTES:**
1. FASTENERS SHALL BE HIGH STRENGTH BOLTS. BOLTS 7/8" DIA., OPEN HOLES 1 1/8" DIA.
 2. ALL SPLICE PLATES SHALL BE A572 GR. 50 AND SHALL CONFORM, EXCEPT FILLER PLATES, TO THE SUPPLEMENTAL REQUIREMENTS FOR NOTCH TOUGHNESS ZONE 2.
 3. SHEAR CONNECTOR INDICATED BY ⊗ IN TOP PLAN.

| REVISION | DATE | DESCRIPTION |
|---|-----------------|-----------------|
| STATE OF ILLINOIS DEPARTMENT OF TRANSPORTATION | | |
| FIELD SPLICES & DETAILS | | |
| GRAND DETOUR BRIDGE OVER ROCK RIVER F.A. RTE. 742 SECTION 398B-1 STA. 1228+96 LEE & OGLE COUNTIES STRUCTURE NUMBER 052-0083 | | |
| STEINMAN BOYNTON INC. CONSULTING ENGINEERS - CHICAGO, ILLINOIS | | |
| DRAWING NO. GD-15 | SCALE N.T.S. | DATE 4-19-93 |
| | | SHEET NO. 37 |

| | |
|------------|-----------|
| DESIGNED - | REVISED - |
| DRAWN - | REVISED - |
| CHECKED - | REVISED - |
| DATE - | REVISED - |

STATE OF ILLINOIS
DEPARTMENT OF TRANSPORTATION

EXISTING BRIDGE PLANS
SN: 052-0063

| | | | | |
|-------------|---------------------------|------------|--------------|--------------------|
| F.A.P. RTE. | SECTION | COUNTY | TOTAL SHEETS | SHEET NO. |
| IL 2 | D2 BRIDGE PAINTING 2014-1 | LEE / OGLE | 25 | 15 |
| | | | | CONTRACT NO. 64J52 |
| ILLINOIS | | | | |