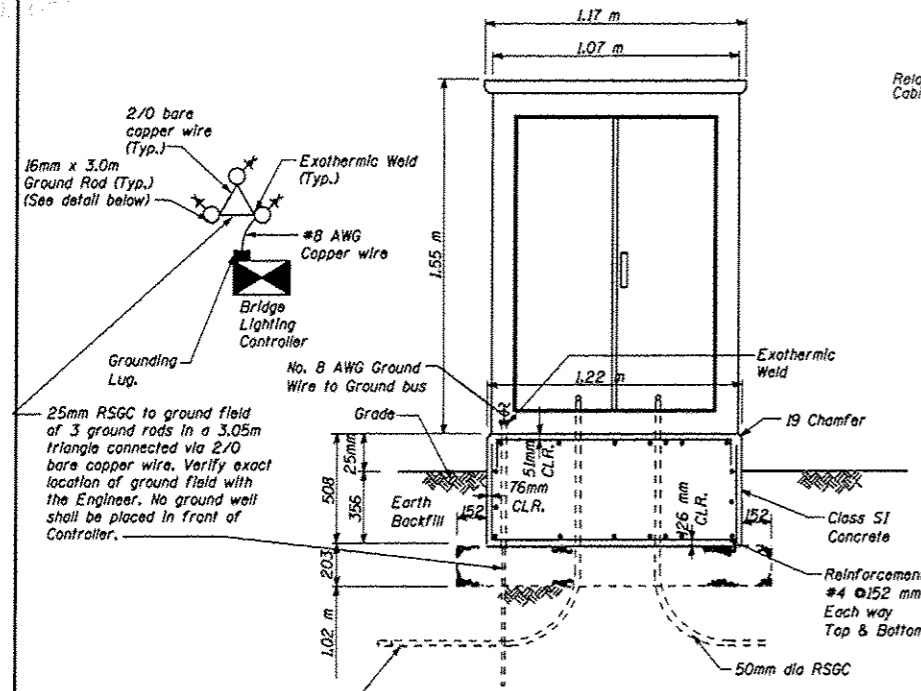
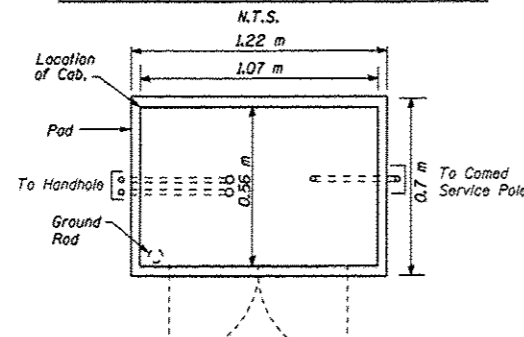


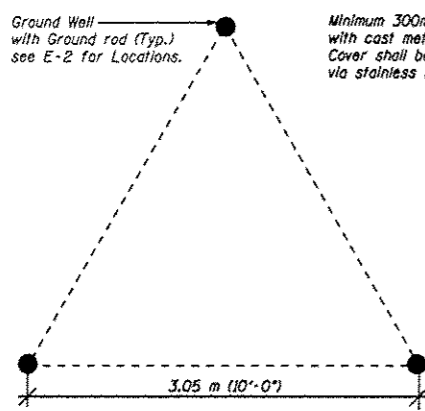
RFS 01/2014



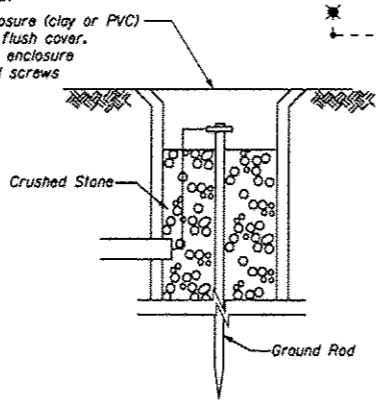
ELECTRICAL CONTROL CABINET & PAD ELEVATION
N.T.S.



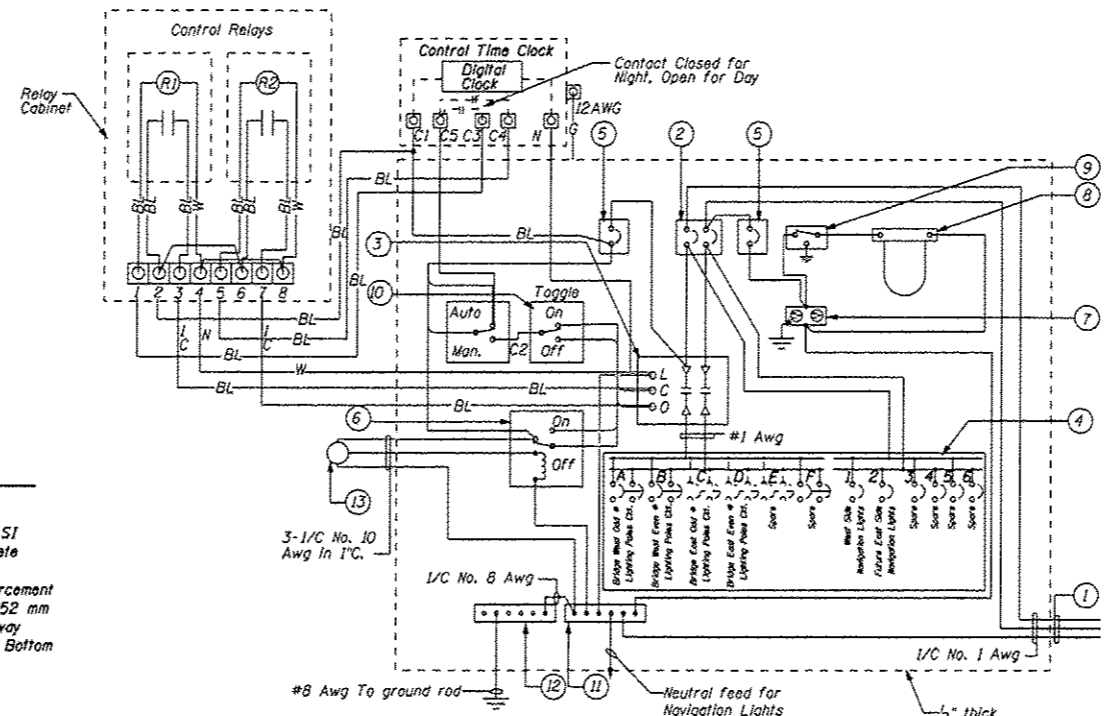
ELECTRICAL CABINET AND PAD PLAN
N.T.S.



GROUND FIELD DETAIL
N.T.S.



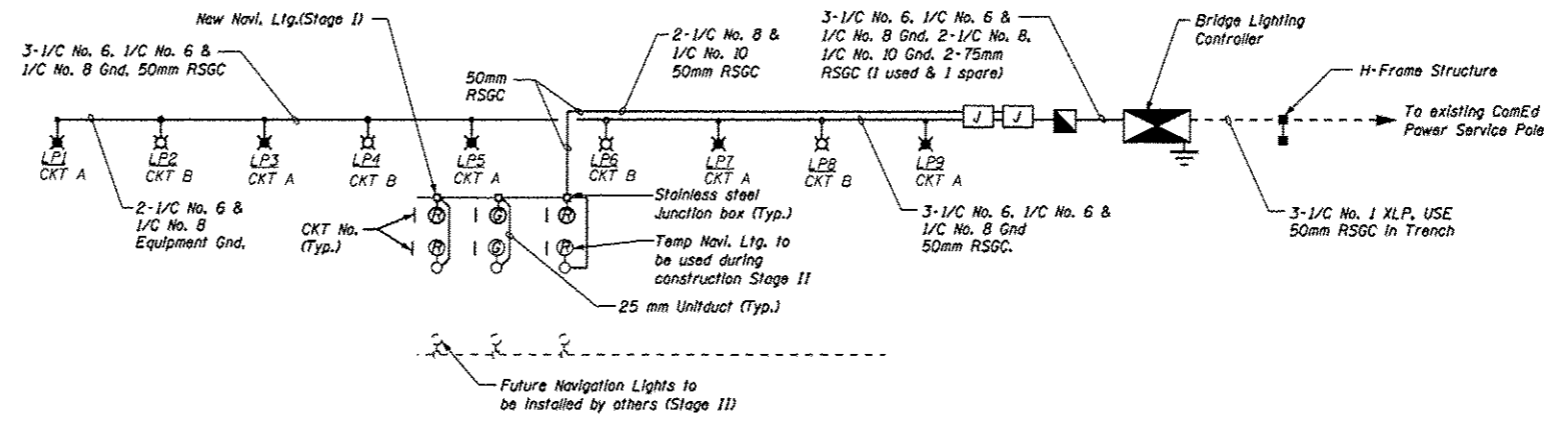
GROUND WELL DETAIL
N.T.S.



CONTROLLER CABINET WIRING DIAGRAM
N.T.S.

CONTROLLER WIRING DIAGRAM LEGEND

- 1 3-1/C No. 1 service wire in 50mm Galvanized Steel Conduit for 120/240V, 1Ø, 3W, 60Hz. service.
- 2 100Amp main circuit breaker, 2 Pole 240V, non-interchangeable trip rating RMS-14000A at 240V.
- 3 100Amp remote control switch, electrically operated, mechanically held, 2-Pole, Single Throw, 240V control circuit, 240V.
- 4 Branch main circuit breakers, 2 Pole & 1 Pole, 240V., 20AT/50AF base, non-interchangeable trip rating RMS-14000A at 240V on 100Amp bus.
- 5 20Amp control circuit, circuit breaker 1 Pole, 120V 20AT/50AF base, non-interchangeable trip interrupting rating RMS 14000A at 240V.
- 6 20Amp, 1 Pole double throw, 120V relay.
- 7 20Amp, 120V duplex receptacle.
- 8 Weatherproof incandescent lighting fixture with 60Watt, 120V lamp.
- 9 Switch for lighting fixture mounted inside Cabinet
- 10 Toggle switches mounted on 100mmx100mm box.
- 11 Neutral bus bar, 6.25mmx25mmx300mm long mounted on panel with taps, (drill and tap as necessary with 4 spare).
- 12 Ground bus bar 6.25mmx25mmx300mm long mounted on panel with taps, (drill and tap as necessary with 4 spare).
- 13 Photocell mounted on top of the controller cabinet.



WIRING DIAGRAM
N.T.S.

- Notes:**
1. Entire Control Cabinet shall be grounded.
 2. All wiring shall be tagged with self-sticking wire markers
 3. Ground bus to be color coded green, neutral bus white, and bonded to cabinet enclosure, by listed pressure concentrators or listed clamps.
 4. All internal controller wiring to be #10 awg unless otherwise noted.
 5. Cabinet wiring insulation to be Type XHHW or approved equal.
 6. No Electric meter required for the lighting controller as the energy charges for the bridge lighting and the navigation lights will be paid by the city of Morris and IDOT, Division of Highways/Dist 3, Ottawa, Illinois respectively on flat rate basis.

FOR INFORMATION ONLY.

FILE NAME =	USER NAME = Potelyj	DESIGNED = YOGESH PATEL	REVISED =	STATE OF ILLINOIS DEPARTMENT OF TRANSPORTATION	EXISTING CONTROLLER WIRING DIAGRAM	F.A.P. RTE.	SECTION	COUNTY	TOTAL SHEETS	SHEET NO.	
u:\p\work\p\p\potelyj\08363159\036628-shr-detailed.dgn	PLOT SCALE = 4995.6995 / 1 in.	DRAWN = YOGESH PATEL	REVISED =			326	(111 BR-11)	GRUNDY	8	8	
#MODELNAME#	PLOT DATE = 1/31/2014	CHECKED = RON WOODSHANK	REVISED =			CONTRACT NO. 66028					
		DATE =	REVISED =			[ILLINOIS] FED. AID PROJECT					