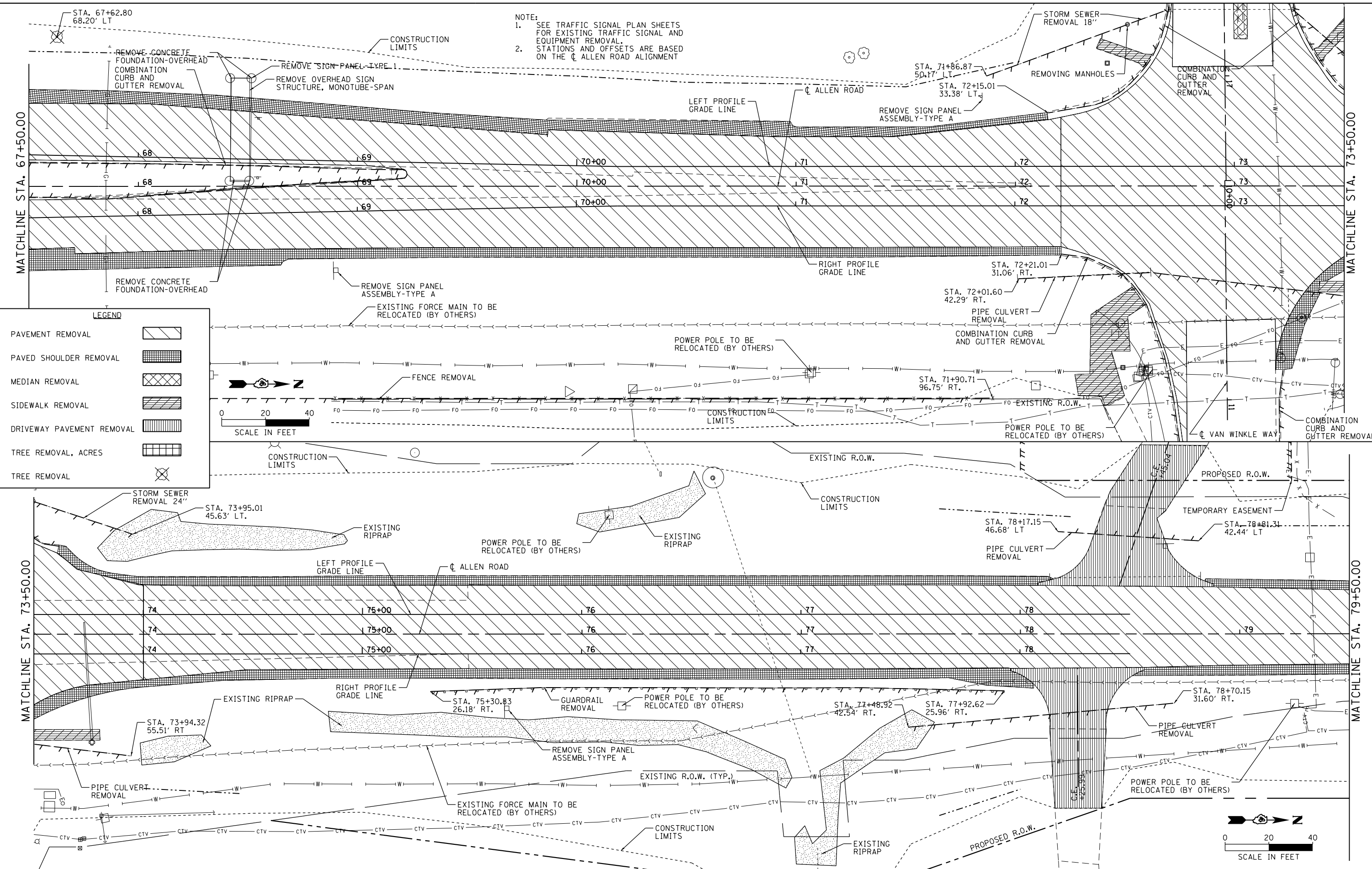


NOTE:
 1. SEE TRAFFIC SIGNAL PLAN SHEETS FOR EXISTING TRAFFIC SIGNAL AND EQUIPMENT REMOVAL.
 2. STATIONS AND OFFSETS ARE BASED ON THE CL ALLEN ROAD ALIGNMENT



LEGEND

| | |
|---------------------------|--|
| PAVEMENT REMOVAL | |
| PAVED SHOULDER REMOVAL | |
| MEDIAN REMOVAL | |
| SIDWALK REMOVAL | |
| DRIVEWAY PAVEMENT REMOVAL | |
| TREE REMOVAL, ACRES | |
| TREE REMOVAL | |

MAURER-STUTZ
 ENGINEERS SURVEYORS

| | | | |
|--|--------------------|------------|-----------|
| FILE NAME = S:\237\2013\23713009\00\AllenRdPlan\I\CADD | USER NAME = wlewis | DESIGNED - | REVISED - |
| CADD Sheets\0468683-sht-rem-ALN3.dgn | | DRAWN - | REVISED - |
| PLOT SCALE = 40.0000' / in. | | CHECKED - | REVISED - |
| PLOT DATE = 1/28/2014 7:42:46 AM | | DATE - | REVISED - |

STATE OF ILLINOIS
DEPARTMENT OF TRANSPORTATION

ALLEN ROAD IMPROVEMENTS
REMOVAL PLAN SHEET - ALLEN ROAD

SCALE: SHEET 3 OF 9 SHEETS STA. TO STA.

| | | | | |
|---------------------------|-------------------------|---------------|--------------------|--------------|
| F.A.U. RTE. 6584 | SECTION 105; (72-7HB)BY | COUNTY PEORIA | TOTAL SHEETS 487 | SHEET NO. 73 |
| 6585 | | | CONTRACT NO. 68683 | |
| ILLINOIS FED. AID PROJECT | | | | |