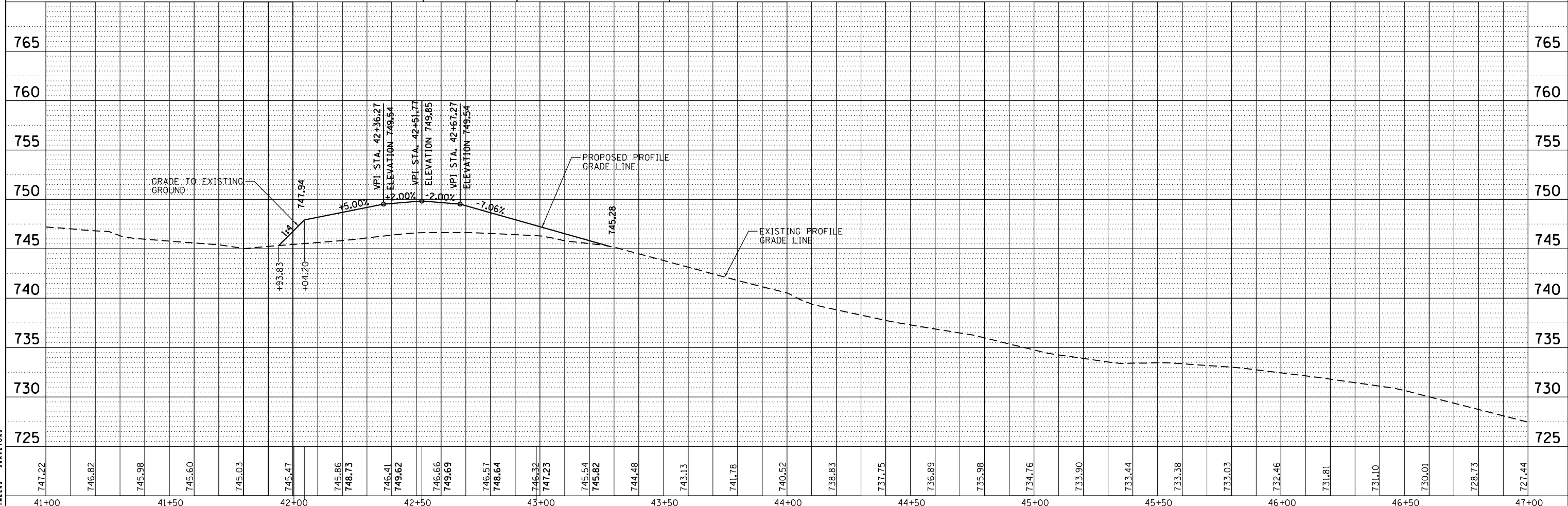
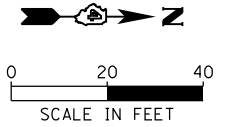
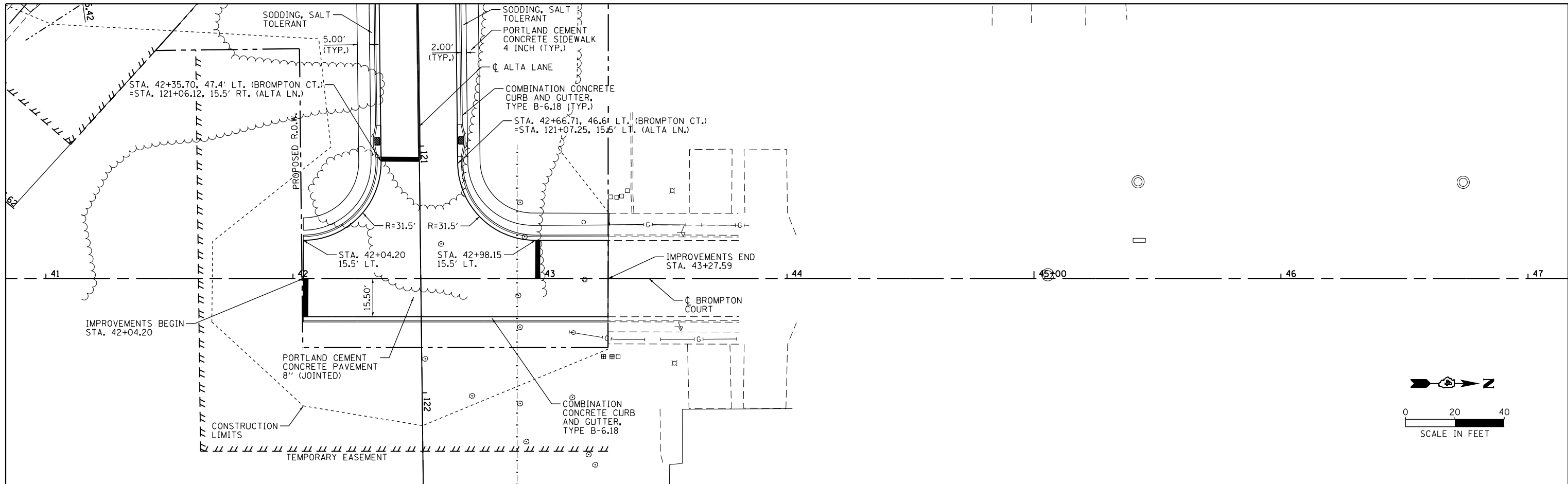


PLAN	SURVEYED	DATE
	PLOTTED	BY
	ALIGNED	
	CHECKED	
	FILED	
	NO.	

PROFILE	SURVEYED	DATE
	PLOTTED	BY
	GRADES CHECKED	
	STRUCTURE NOTATIONS OK'D	
	NO.	



MAURER-STUTZ
ENGINEERS SURVEYORS

FILE NAME =	USER NAME = wlewis	DESIGNED -	REVISED -	STATE OF ILLINOIS DEPARTMENT OF TRANSPORTATION	ALLEN ROAD IMPROVEMENTS PLAN AND PROFILE SHEET - BROMPTON COURT EXTENSION	F.A.U. RTE.	SECTION	COUNTY	TOTAL SHEETS	SHEET NO.
S:\237\2013\23713009\00\AllenRdPhII\CAADD\CADD Sheets\0468683-sht-plnprf-BROMPTON.dgn		DRAWN -	REVISED -			6584	105; (72-7HB)BY	PEORIA	487	95
Default		CHECKED -	REVISED -			6585				
PLOT SCALE = 40.0000' / in.		DATE -	REVISED -			CONTRACT NO. 68683				
PLOT DATE = 1/24/2014				SCALE:	SHEET 16 OF 17 SHEETS	STA.	TO STA.	ILLINOIS FED. AID PROJECT		