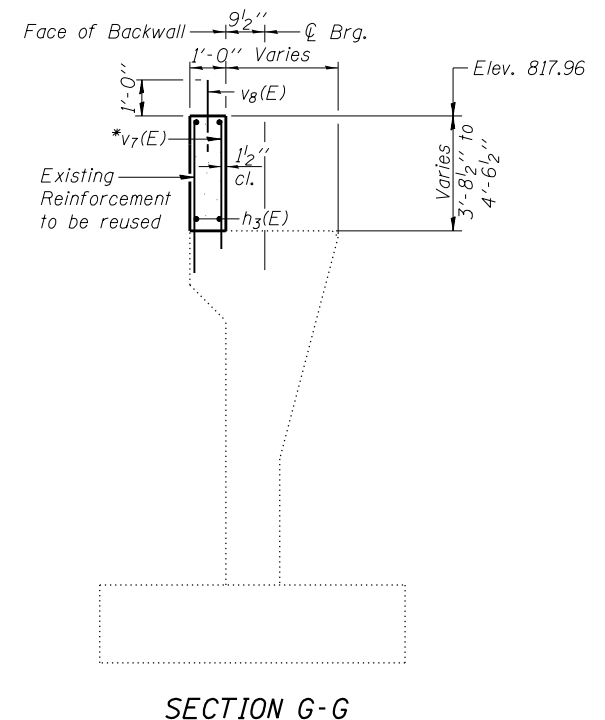


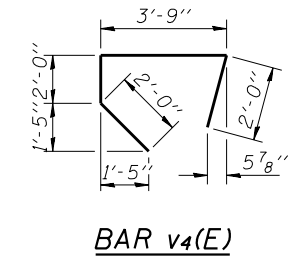
Notes:  
Excavation for proposed abutment footing shall be paid for as Braced Excavation.  
Existing reinforcement in back wall not meeting the minimum clearances shall be removed and replaced by the reinforcement as shown.

\* Grout bars 5" into existing concrete in accordance with Section 584 of the Standard Specifications

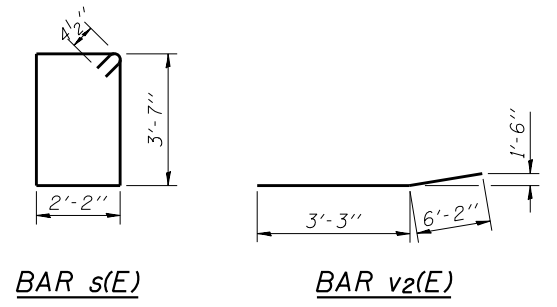


SECTION G-G

BAR n(E)

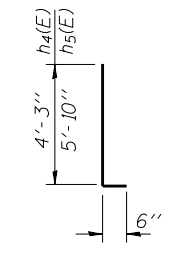


BAR v4(E)

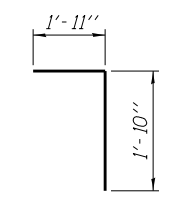


BAR s(E)

BAR v2(E)



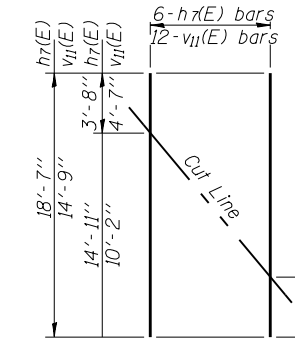
BARS h4(E) and h5(E)



BAR v14(E)

BILL OF MATERIAL

Bar	No.	Size	Length	Shape
h(E)	18	#6	21'-0"	—
h1(E)	5	#5	21'-0"	—
h2(E)	20	#5	29'-0"	—
h3(E)	10	#5	26'-3"	—
h4(E)	20	#5	4'-9"	L
h5(E)	20	#5	6'-4"	L
h6(E)	10	#5	20'-11"	—
h7(E)	6	#5	18'-7"	—
h8(E)	8	#5	3'-8"	—
h9(E)	2	#6	15'-6"	—
h10(E)	28	#6	3'-1"	—
n(E)	52	#7	5'-11"	U
n1(E)	2	#7	3'-6"	—
p(E)	10	#7	21'-0"	—
p1(E)	10	#5	2'-8"	—
s(E)	22	#4	12'-3"	□
t1(E)	56	#6	8'-2"	—
v(E)	22	#6	9'-2"	—
v2(E)	22	#6	9'-5"	—
v4(E)	21	#5	9'-9"	∩
v6(E)	42	#5	5'-9"	—
v7(E)	63	#5	4'-10"	—
v8(E)	105	#5	3'-0"	—
v9(E)	10	#5	14'-1"	—
v11(E)	12	#5	14'-9"	—
v13(E)	14	#5	4'-7"	—
v14(E)	22	#5	3'-9"	∩
w2(E)	18	#5	21'-0"	—
w3(E)	18	#5	2'-8"	—
Structure Excavation		Cu. Yd.	86	
Concrete Structures		Cu. Yd.	58.6	
Reinforcement Bars, Epoxy Coated		Pound	6950	
Furnishing Metal Shell Piles 12" x 0.250"		Foot	467	
Driving Piles		Foot	467	
Test Pile Metal Shells		Each	1	
Granular Backfill for Structures		Cu. Yd.	174	
Concrete Sealer		Sq. Ft.	621	
Braced Excavation		Cu. Yd.	67	



FIELD CUTTING DIAGRAM

\*\*Order h7(E) & v11(E) bars full length. Cut to fit as shown and use remainder of bars in other face.

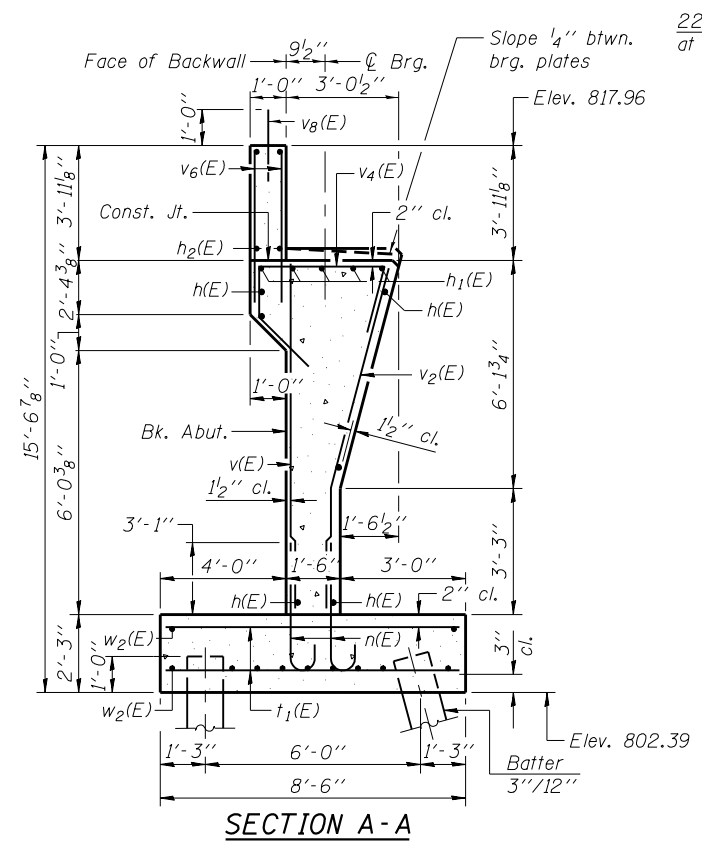
APPR. BENT-PILE DATA

Type: Metal Shell - 12 in. dia. x 0.250 in. walls  
Nominal Required Bearing: 198 kips  
Allowable Resistance Available: 66 kips  
Est. Length: 29 feet  
No. Production Piles: 4  
No. Test Piles: 0

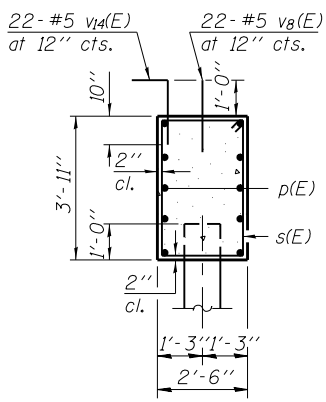
ABUT.- PILE DATA

Type: Metal Shell - 12 in. dia. x 0.250 in. walls  
Nominal Required Bearing: 273 kips  
Allowable Resistance Available: 91 kips  
Est. Length: 39 feet  
No. Production Piles: 9  
No. Test Piles: 1

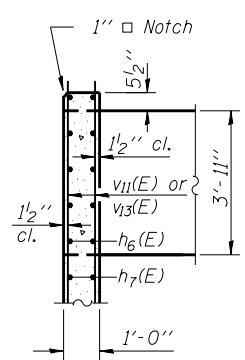
(Sheet 2 of 2)



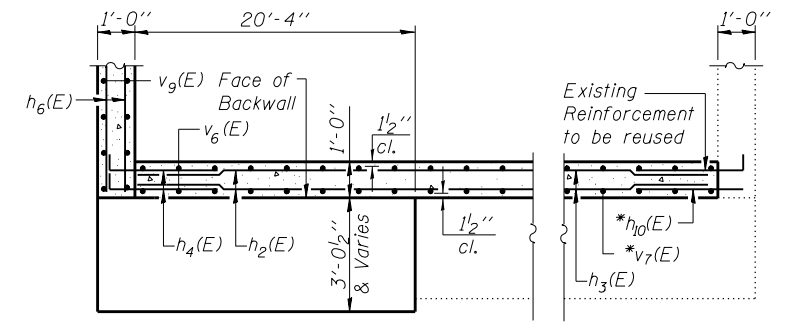
SECTION A-A



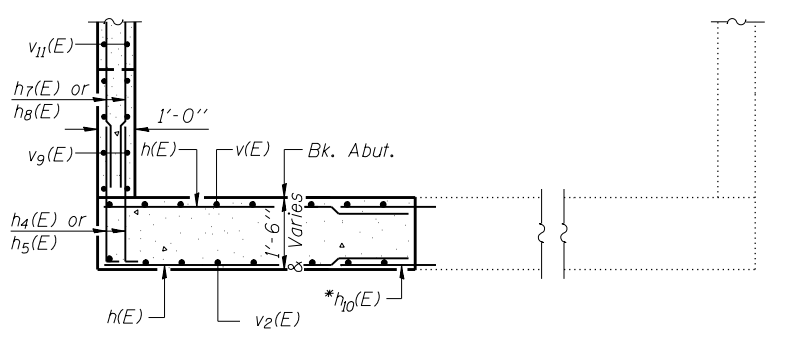
SECTION B-B



SECTION C-C



SECTION E-E



SECTION F-F