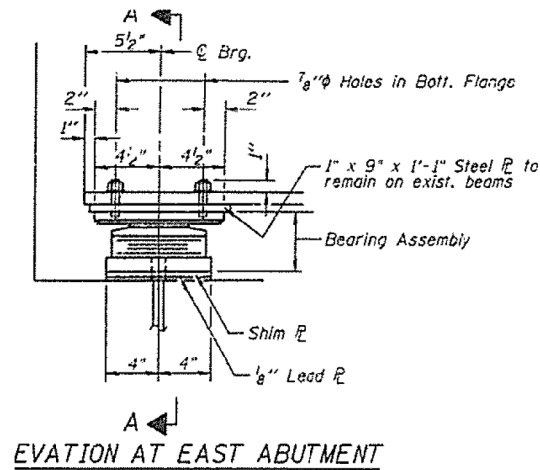
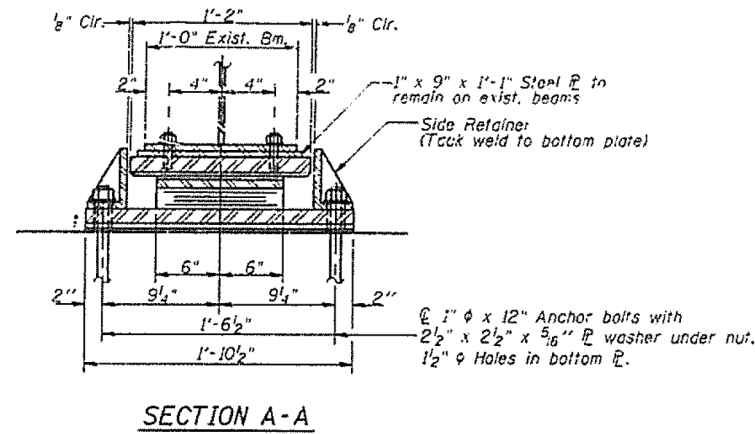


LOC.1 S.N. 090-0071 (EB) & LOC.2 S.N. 090-0072 (WB) BEARINGS

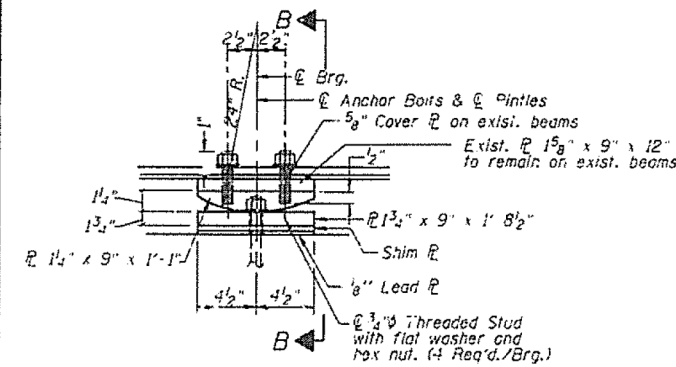


ELEVATION AT EAST ABUTMENT

TYPE II TFE ELASTOMERIC EXP. BRG.



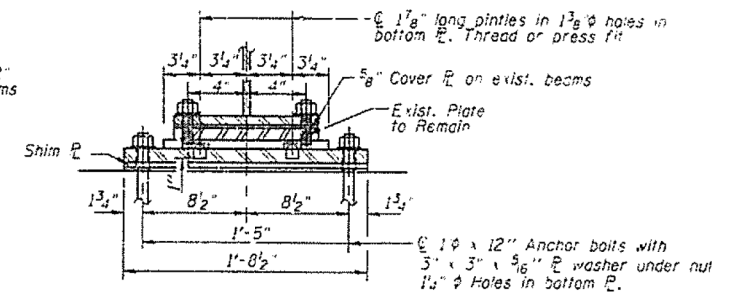
SECTION A-A



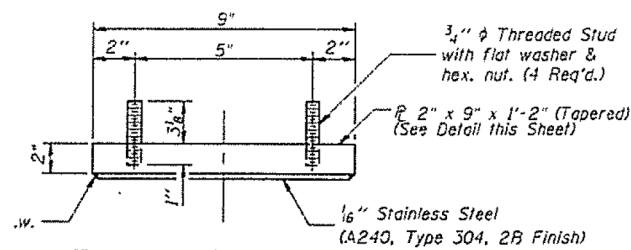
ELEVATION AT PIER 2

FIXED BEARING

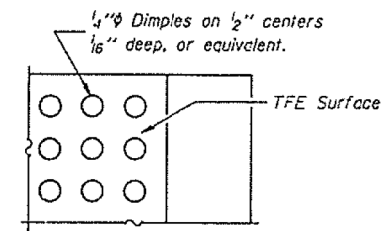
(Weight included in Structural Steel)



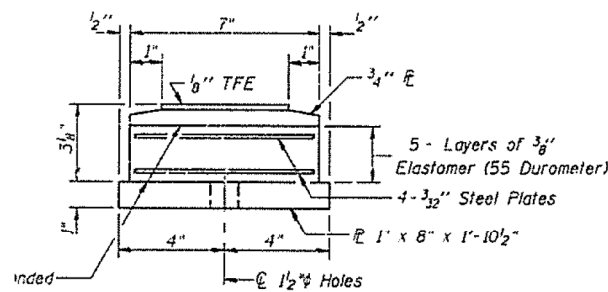
SECTION B-B
(AT PIER 2)



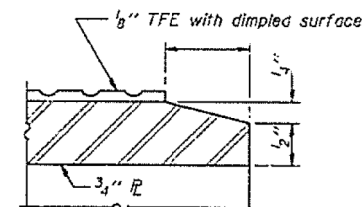
TOP BEARING ASSEMBLY



PLAN-TFE SURFACE



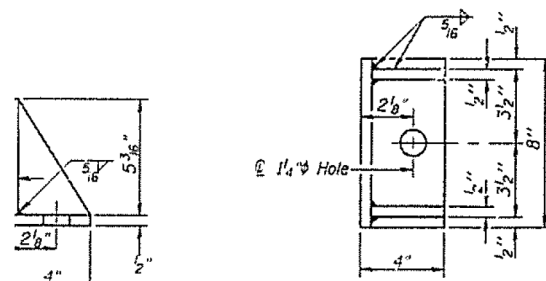
BOTTOM BEARING ASSEMBLY



SECTION THRU TFE

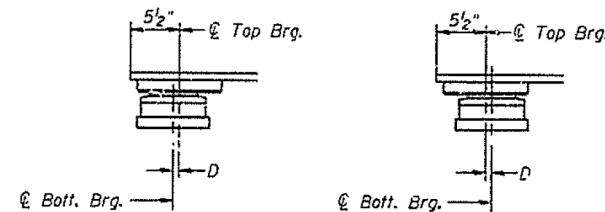
Note: The 1/8" TFE sheet shall be bonded directly to the top steel plate with a two-component, medium viscosity epoxy resin, conforming to the requirements of the Federal Specification MMM-A-134, Type . . . The bond agent shall be applied on the full area of the contact surfaces.

Bonding of 1/8" TFE sheet during vulcanizing process will be permitted provided the process and method of adjusting assembly height is approved by the Engineer.

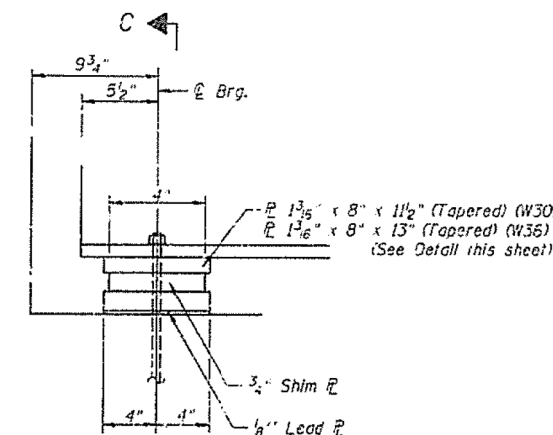


SIDE RETAINER

Equivalent rolled angle with stiffeners will be allowed in lieu of welded plates. Weight included with Structural Steel.

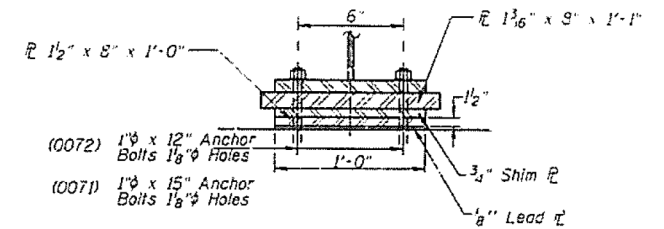


BELOW 50°F. (Move bott. brg. away from fixed brg.)
ABOVE 50°F. (Move bott. brg. toward fixed brg.)

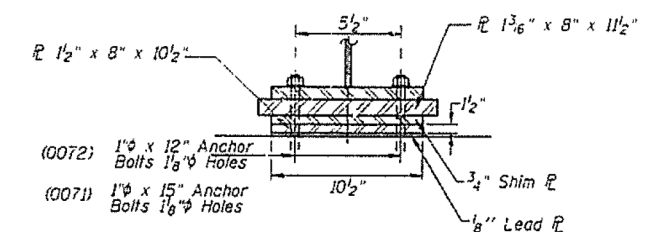


ELEVATION AT WEST ABUTMENT

NOTE: Before installing the new bearings, remove the top plate of the existing bearing assembly from the bottom flange using the air-arc method and grind smooth all weld material remaining on the bottom flange. Grind existing anchor bolts flush with existing concrete surface. Grind existing anchor bolt smooth and seal with epoxy. Cost is incidental to Furnishing and Erecting Structural Steel.



SECTION C-C
(AT W. ABUT., BEAMS 1, 9 & 10) S.N. 0071
(AT W. ABUT., BEAMS 1, 6 & 7) S.N. 0072



SECTION C-C
(AT W. ABUT., BEAMS 2-5) S.N. 0071
(AT W. ABUT., BEAMS 2-5) S.N. 0072

FILE NAME =	USER NAME = aubreys	DESIGNED -	REVISED -	STATE OF ILLINOIS DEPARTMENT OF TRANSPORTATION	LOCATION 1&2 BEARING DETAIL INFORMATION ONLY				F.A. RT.E.	SECTION	COUNTY	TOTAL SHEETS	SHEET NO.
ci:\users\aubreys\desktop\68b49\68b49	2014 Metalizing.dgn	DRAWN -	REVISED -		VAR	D4 Bridge Metalizing 2014	Various	23	8				
Default	PLOT SCALE = 100.0000' / in.	CHECKED -	REVISED -		SCALE: SHEET OF SHEETS STA. TO STA.				CONTRACT NO. 68B49				
	PLOT DATE = 2/14/2014	DATE -	REVISED -		ILLINOIS FED. AID PROJECT								