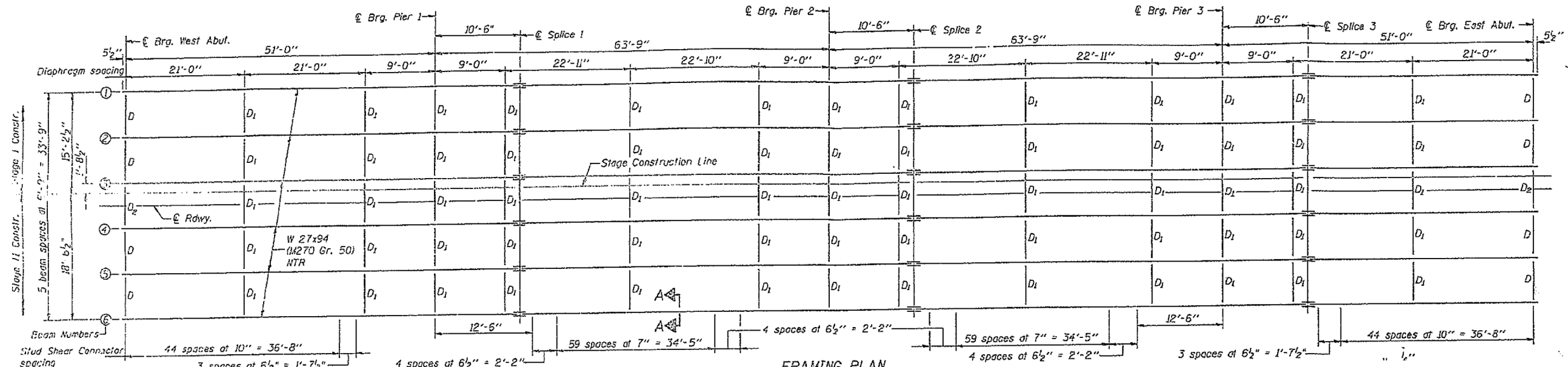
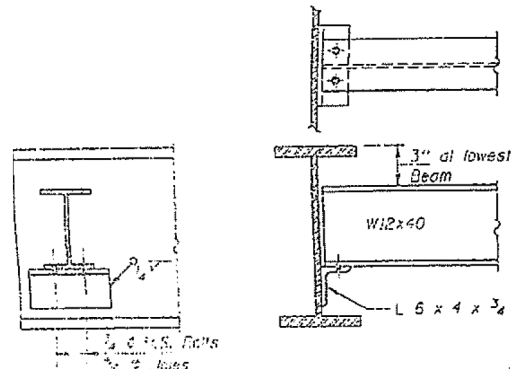


LOC.6 S.N. 029-0012

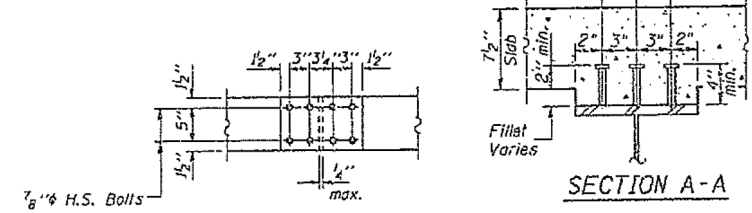


FRAMING PLAN
 $\frac{3}{4}$ " ϕ Granular or solid flux filled headed studs, conforming to the requirements of Art. 710.3B of the Std. Specs. Automatically end welded to Flange. (4176 Req'd.)

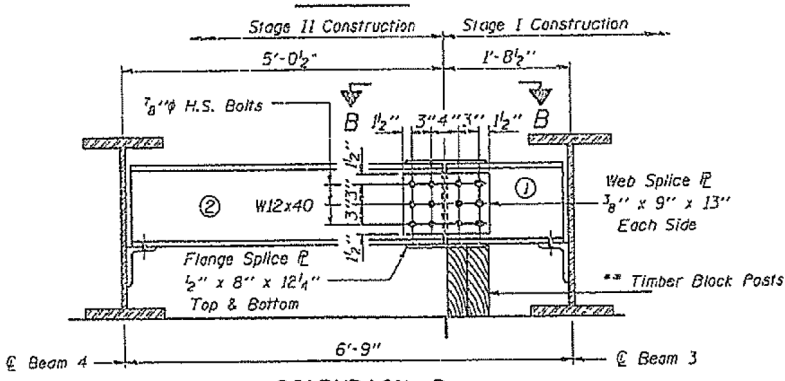


DIAPHRAGM D
8 Required

DIAPHRAGM D1
65 required



SECTION A-A



DIAPHRAGM D2
2 Required (Looking West)

** Cost of Timber Block Posts is incidental to Structural Steel.

FILE NAME =	USER NAME = aubreys	DESIGNED -	REVISED -	STATE OF ILLINOIS DEPARTMENT OF TRANSPORTATION	LOCATION 6 FRAMING PLAN & DIAPHRAGM INFORMATION ONLY				F.A. RTE.	SECTION	COUNTY	TOTAL SHEETS	SHEET NO.			
Default	c:\users\aubreys\desktop\68b49\68b49_2014 Metalizing.dgn	DRAWN -	REVISED -		SCALE:	SHEET	OF	SHEETS	STA.	TO	STA.	VAR	D4 Bridge Metalizing 2014	Illinois	23	17
	PLOT SCALE = 100.0000' / in.	CHECKED -	REVISED -									Various	CONTRACT NO. 68B49			
	PLOT DATE = 2/14/2014	DATE -	REVISED -											ILLINOIS FED. AID PROJECT		