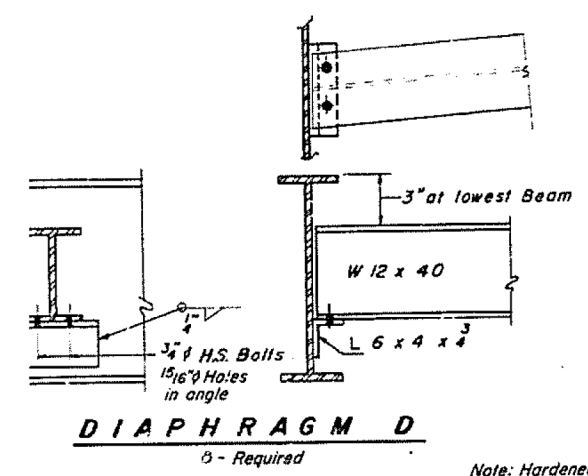
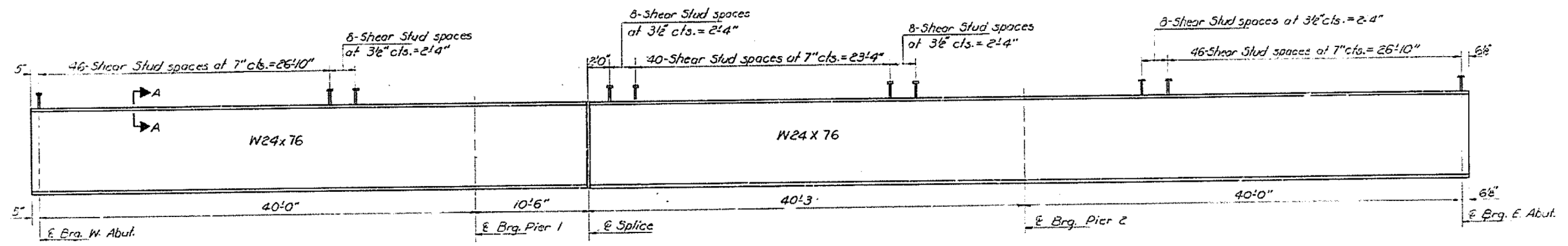
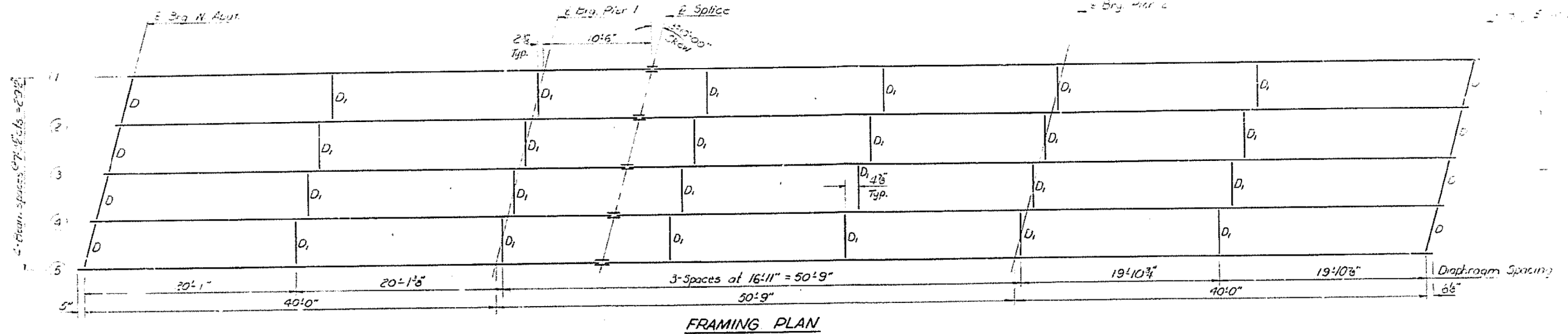
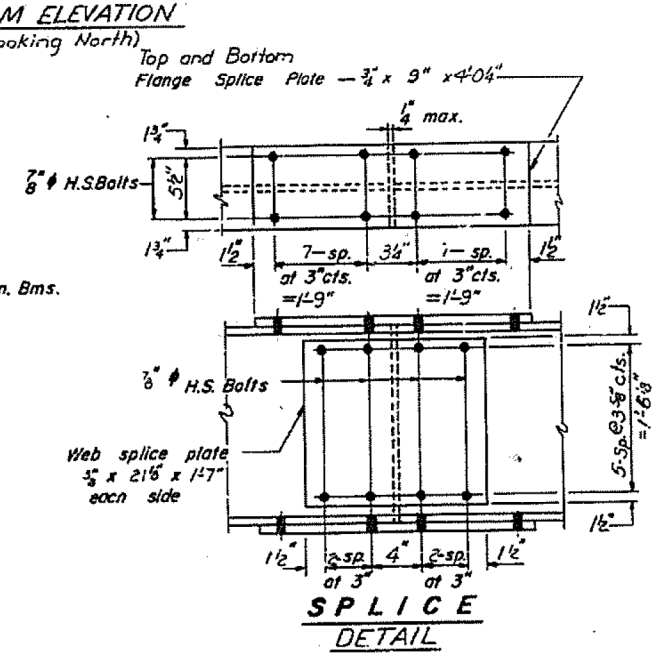
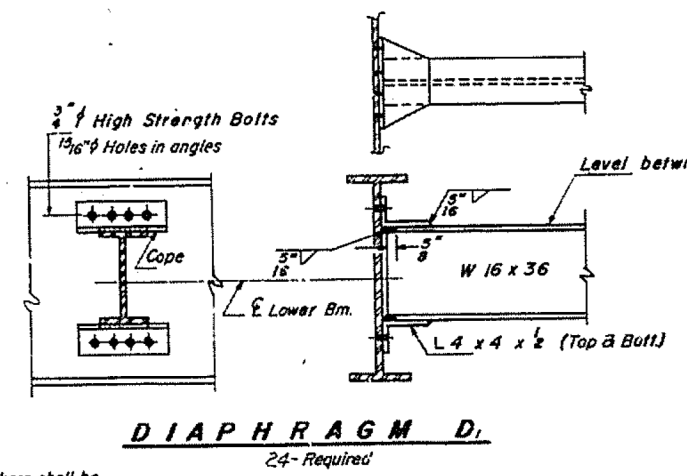


LOC.7 S.N. 062-0038



Note: Hardened washers shall be required over 1/16" holes in angles.



FILE NAME =	USER NAME = aubreys	DESIGNED -	REVISED -	STATE OF ILLINOIS DEPARTMENT OF TRANSPORTATION	LOCATION 7 FRAMING PLAN & DIAPHRAGM INFORMATION ONLY				F.A. RTE.	SECTION	COUNTY	TOTAL SHEETS	SHEET NO.
ci:\users\aubreys\desktop\68b49\68b49	2014 Metalizing.dgn	DRAWN -	REVISED -		SCALE: SHEET OF SHEETS STA. TO STA.				VAR D4	Bridge Metalizing 2014	Various	23	20
Default	PLOT SCALE = 100.0000' / in.	CHECKED -	REVISED -						CONTRACT NO. 68B49				
	PLOT DATE = 2/14/2014	DATE -	REVISED -						ILLINOIS FED. AID PROJECT				