

F.A.P. RTE.	SECTION	COUNTY	TOTAL SHEETS	SHEET NO.
318	6-1	PEORIA	6	1
		ILLINOIS	CONTRACT NO. 68B72	

**INDEX OF SHEETS**

1. COVER SHEET
2. GENERAL /PROJECT SPECIFIC NOTES
3. SUMMARY OF QUANTITIES
4. TYPICAL SECTIONS
5. SCHEDULE OF QUANTITIES
6. PLAN

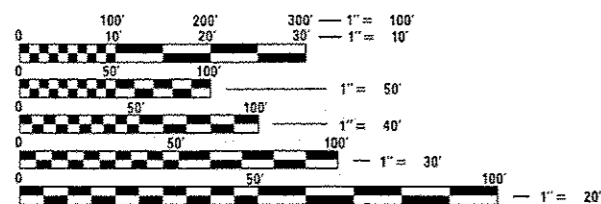
**HIGHWAY STANDARDS**

- 701201-04
- 701301-04
- 701311-03
- 701901-03
- 780001-04
- 781001-03
- BLR 21-9

**DESIGN DESIGNATION:  
CLASS III TRUCK ROUTE**

**FUNCTIONAL CLASSIFICATION:  
OTHER ARTERIAL**

ADT = 8800  
%SU = 2.8%  
%MU = 8.5%



FULL SIZE PLANS HAVE BEEN PREPARED USING STANDARD ENGINEERING SCALES. REDUCED SIZED PLANS WILL NOT CONFORM TO STANDARD SCALES. IN MAKING MEASUREMENTS ON REDUCED PLANS, THE ABOVE SCALES MAY BE USED.

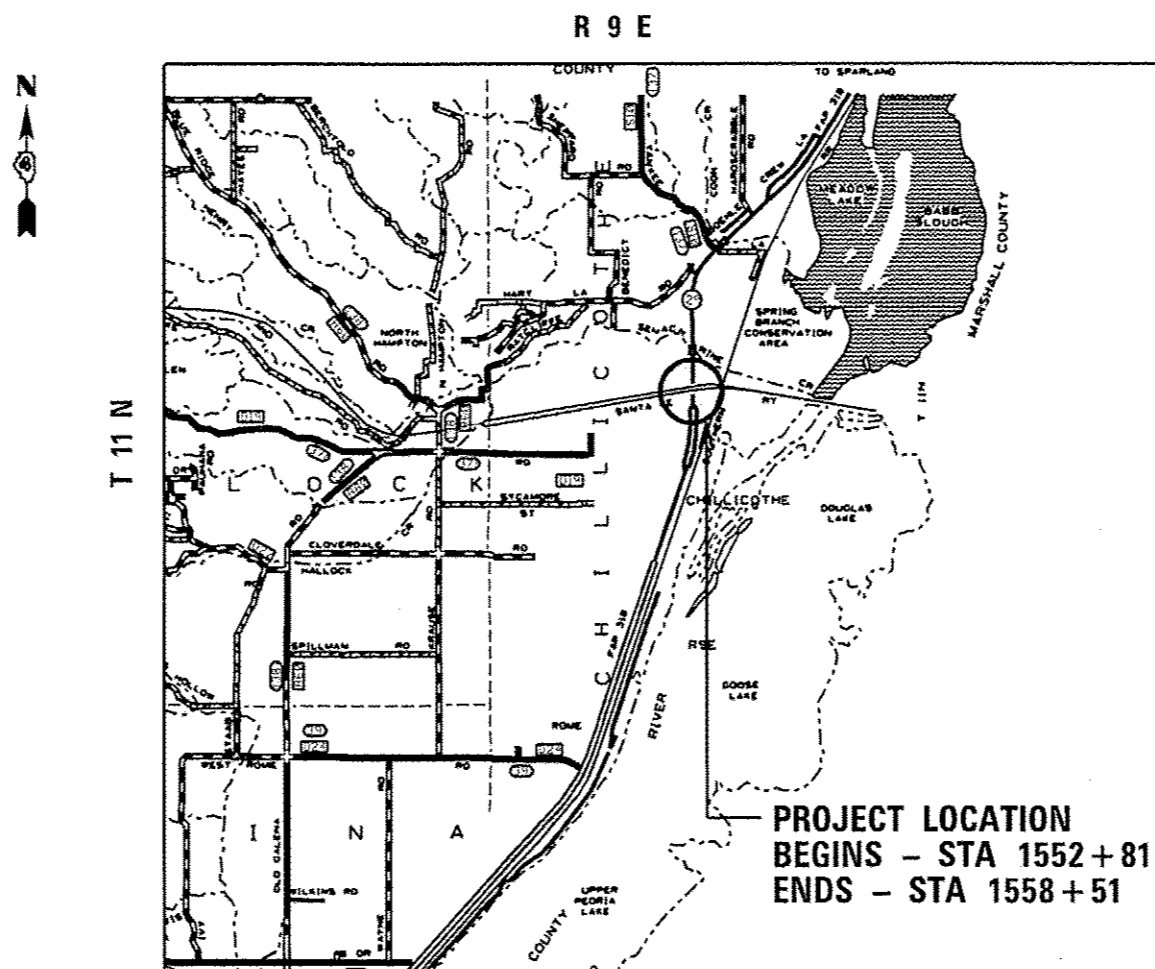
J.U.L.I.E.  
JOINT UTILITY LOCATION INFORMATION FOR EXCAVATION  
1-800-892-0123  
OR 811

**PROJECT ENGINEER RICH DOTSON (309) 671-3476**  
**PROJECT MANAGER MIKE JACOBS (309) 671-3455**  
**CATALOG NO. 035094-00D**  
**CONTRACT NO. 68B72**

**STATE OF ILLINOIS  
DEPARTMENT OF TRANSPORTATION  
DIVISION OF HIGHWAYS**

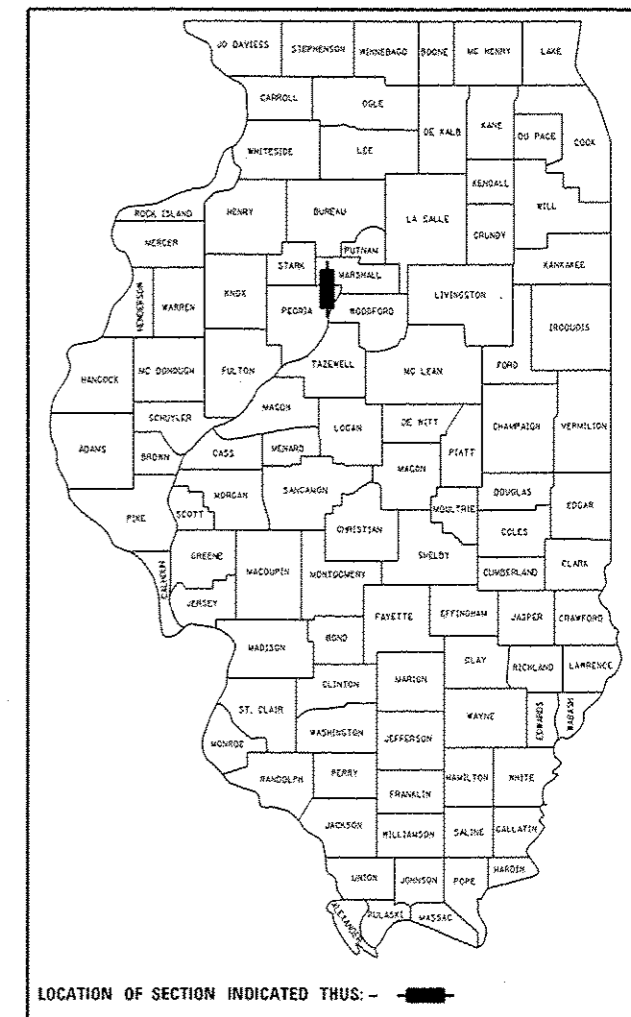
**PROPOSED  
HIGHWAY PLANS**

**FAP ROUTE 318 (IL 29)  
SECTION 6-1  
PEORIA COUNTY  
C-94-067-14**



GROSS LENGTH = 570 FT. = 0.11 MILE  
NET LENGTH = 570 FT. = 0.11 MILE

D-94-014-14



**PROJECT DESCRIPTION -**

**PAVEMENT REMOVAL AND REPLACEMENT  
COURSE ALONG IL 29 AT THE  
BNSF RR VIADUCT CHILLICOTHE**

STATE OF ILLINOIS  
DEPARTMENT OF TRANSPORTATION  
DIVISION OF HIGHWAYS  
SUBMITTED March 21 20 14  
Joseph E. Howard  
DEPUTY DIRECTOR OF HIGHWAYS, REGION ENGINEER  
March 21 20 14  
John D. Baranzelli, PE  
ENGINEER OF DESIGN AND ENVIRONMENT  
March 21 20 14  
Omer Osman, PE  
DIRECTOR OF HIGHWAYS, CHIEF ENGINEER

**PRINTED BY THE AUTHORITY  
OF THE STATE OF ILLINOIS**