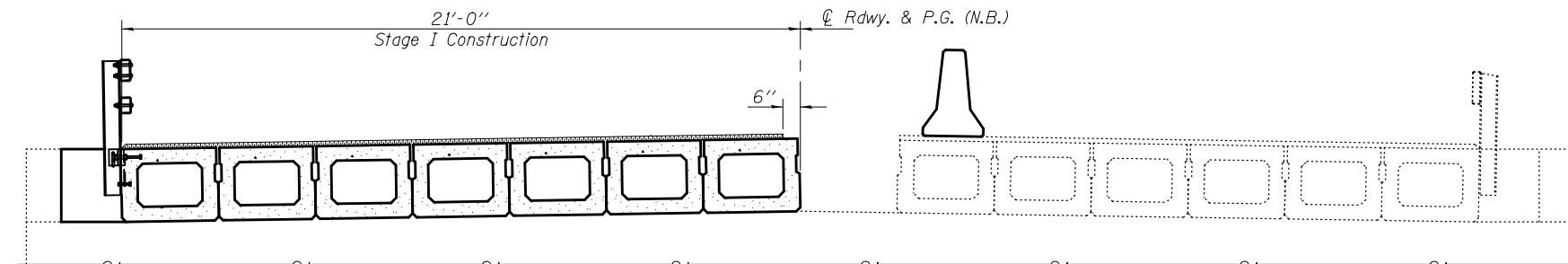
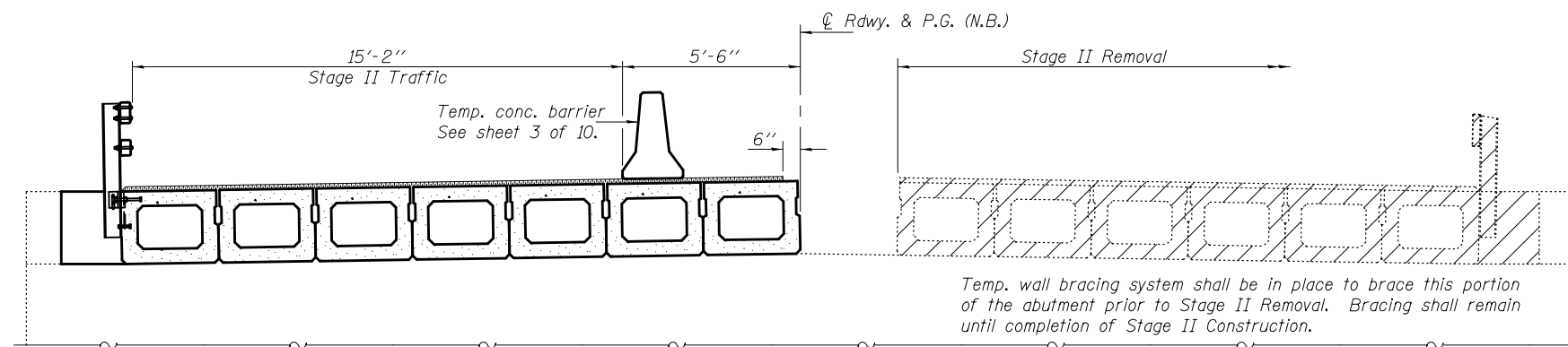


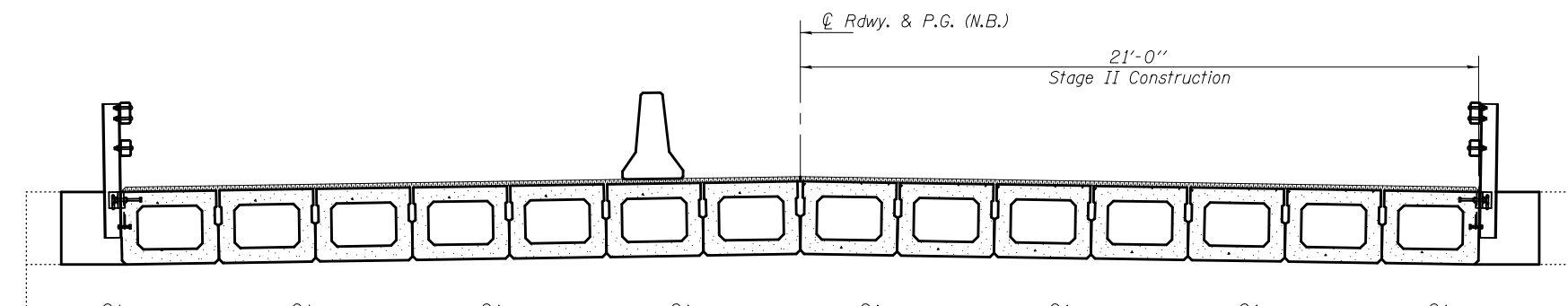
STAGE I REMOVAL



STAGE I CONSTRUCTION

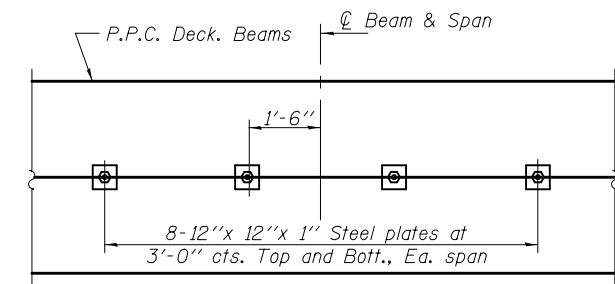


STAGE II REMOVAL

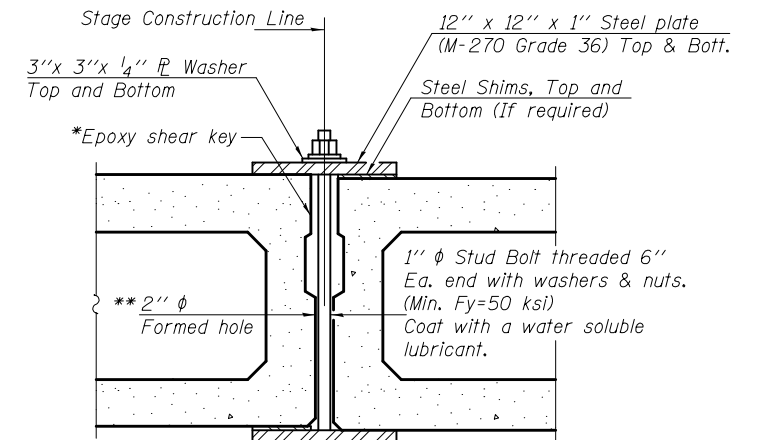


STAGE II CONSTRUCTION

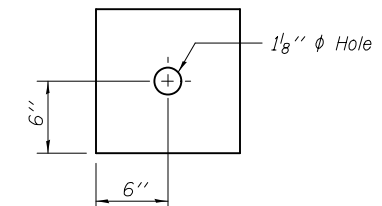
Notes: All staging sections are looking North.
 Hatched area indicates removal of existing superstructure.
 For quantity of temporary concrete barrier, see Roadway Plans.
 Wearing surface removal included in the cost of Removal of Existing Superstructures.



PLAN



SECTION

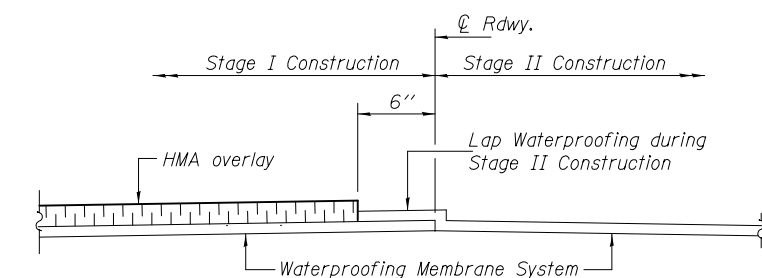


CLAMPING PLATE

SHEAR KEY CLAMPING DETAILS AT STAGE CONST. JT.

Shear key clamping device to be removed prior to installation of waterproofing and HMA overlay.
 Cost included with Precast Prestressed Concrete Deck Beams.
 See Stage Construction Details for traffic lanes.

*Epoxy Resin Binder System. See Special Provisions.
 **Cast semicircular recesses in the sides of each beam adjacent to the stage construction line. These recesses should align to form a hole at the appropriate locations for the clamping device bolts.



WATERPROOFING TREATMENT AT STAGE CONSTRUCTION

DESIGNED - Josue Ortiz-Varela
 CHECKED - Meseret Silma
 DRAWN - h.t. duong
 CHECKED - JOV/MS/GRA

EXAMINED - *Jayne F. [Signature]*
 ACTING ENGINEER OF BRIDGE DESIGN
 PASSED - *Carl [Signature]*
 ACTING ENGINEER OF BRIDGES AND STRUCTURES

DATE - MARCH 24, 2014
 REVISED -
 REVISED -

**STATE OF ILLINOIS
 DEPARTMENT OF TRANSPORTATION**

**STAGE CONSTRUCTION DETAILS
 STRUCTURE NO. 020-0046**

SHEET NO. 2 OF 10 SHEETS

F.A.P. RTE.	SECTION	COUNTY	TOTAL SHEETS	SHEET NO.
322	54B-3, 54B-2	DEWITT	89	46
CONTRACT NO. 70606				

ILLINOIS FED. AID PROJECT