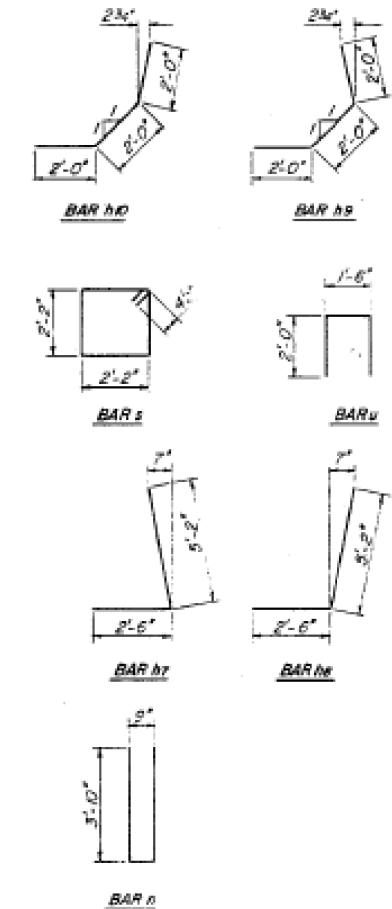
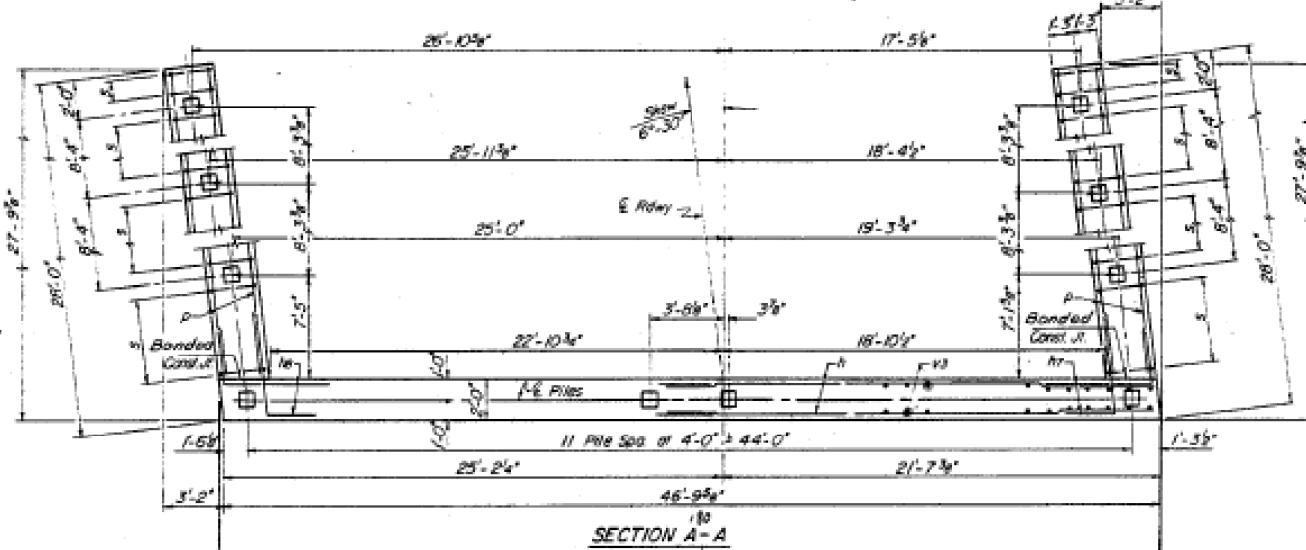
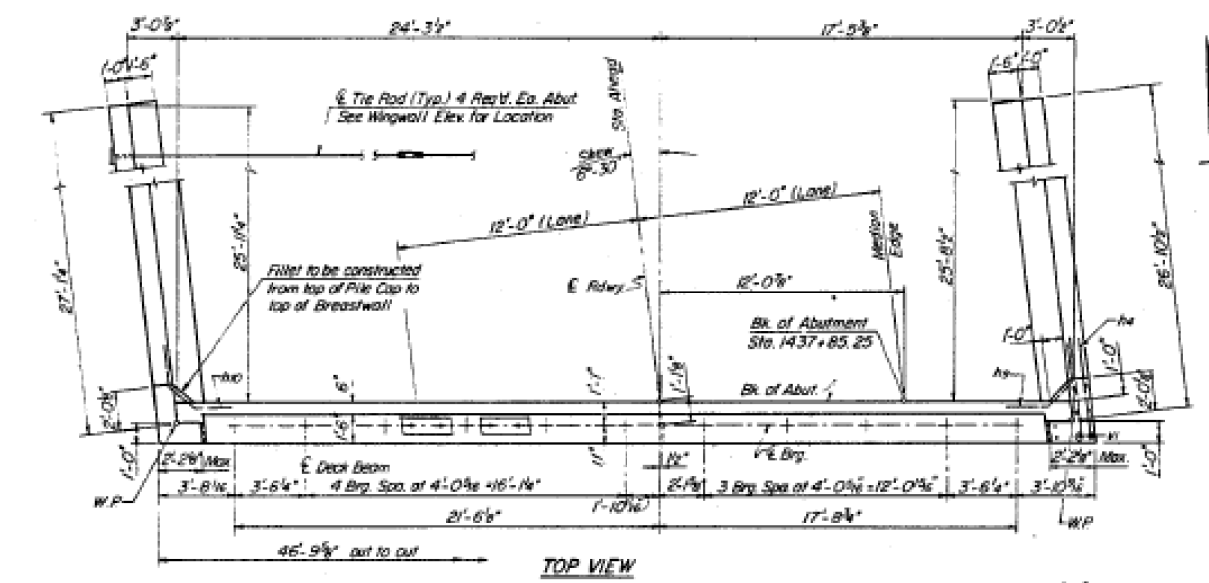
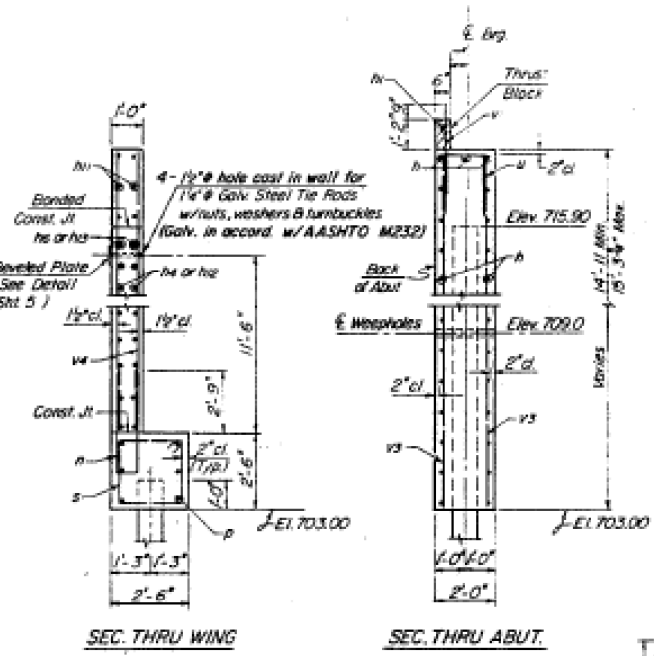
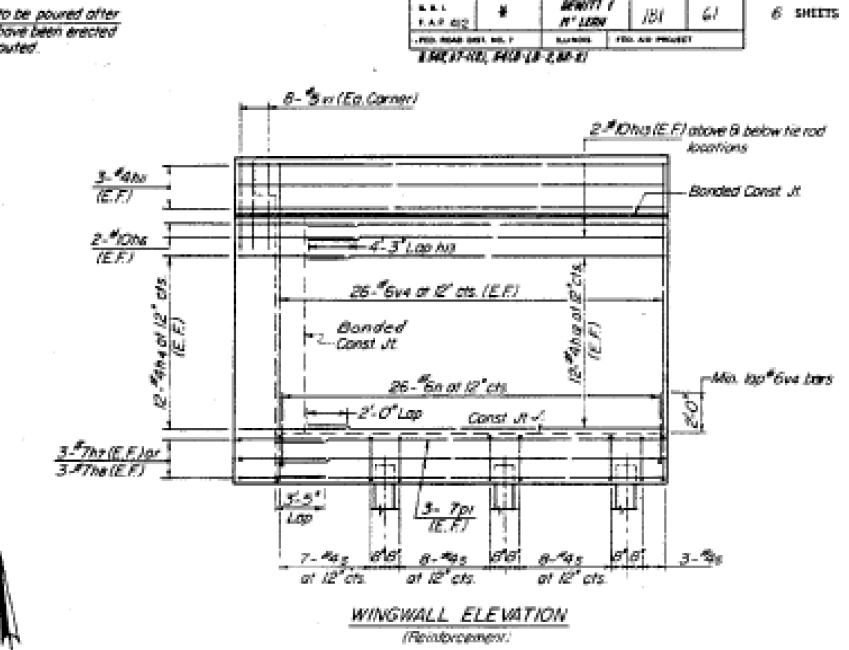
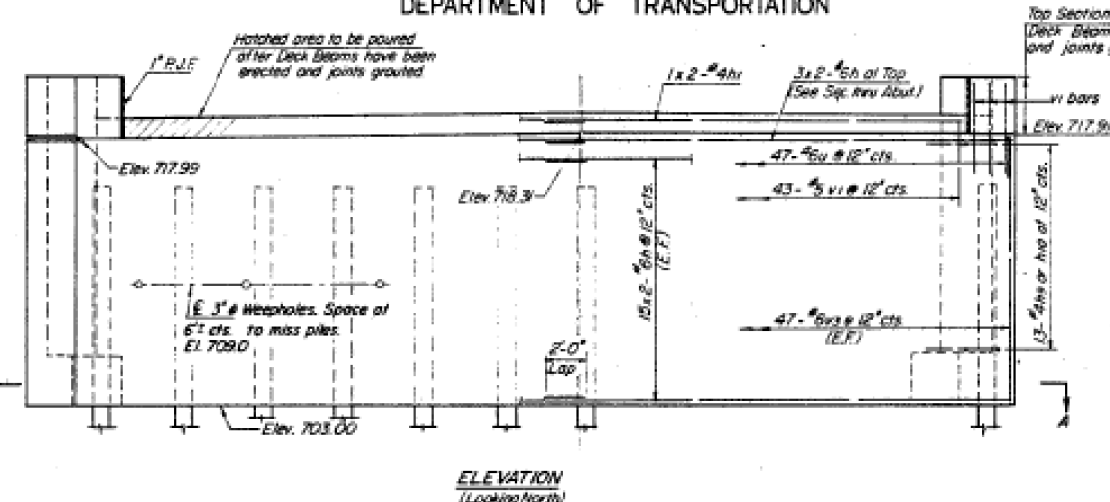
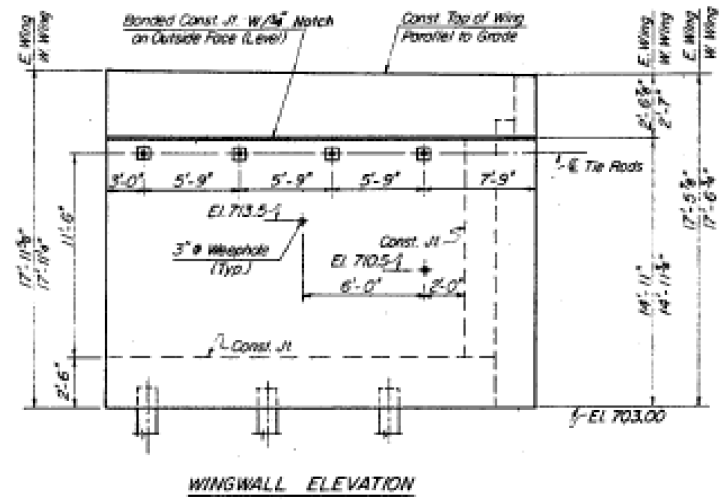


STATE OF ILLINOIS
DEPARTMENT OF TRANSPORTATION

ROUTE NO.	SECTION	COUNTY	TOTAL SHEETS	SHEET NO.
F.A.P. 412	548-3	DEWITT	89	70
SHEET NO. 6				



BILL OF MATERIALS

BAR NO.	NO.	SIZE	LENGTH	SHAPE
h0	66	#6	24'-3"	
h1	2	#4	23'-3"	
h4	48	#4	5'-0"	
h5	8	#10	7'-3"	
h7	6	#7	7'-8"	
h8	6	#7	7'-8"	
h9	13	#4	6'-0"	
h10	13	#4	6'-0"	
h12	12	#4	27'-9"	
h14	48	#4	24'-8"	
h15	8	#10	24'-8"	
s	52	#6	8'-5"	
v	12	#7	25'-6"	
v	52	#4	9'-5"	
v	47	#6	5'-6"	
v1	59	#3	4'-5"	
v3	94	#6	14'-8"	
v4	104	#6	14'-9"	

Class X Concrete Cu Yds. 96.1
Reinforcement Bars Lbs. 11,640
Structural Steel Lbs. 1050
Metal Pile Shells - Special Lin. Ft. 659
Test Pile Metal Shell - Special Each 1

PILE DATA
Type: Metal Shell 10x10x1/2"
Capacity: 35 Tons
Est. Length: 43' Abut., 3' Wingwalls
No. Req'd.: 11 Abut., 6 Wingwalls + 1 Test Pile

Note: Driving & bearing ends of tube shall be cut square.

DETAIL OF METAL PILE SHELLS-SPECIAL

DESIGNED	EFV
CHECKED	DVK
DRAWN	JT
CHECKED	G.P.

NORTH ABUTMENT
F.A.P. 412 (U.S. RTE. 51) OVER
TRIB. OF LONG-POINT CREEK
DEWITT COUNTY
STATION 1437+53.04

c:\pwworkspace\jayed\10220047-70606-016-ESB.dwg

FOR INFORMATION ONLY