

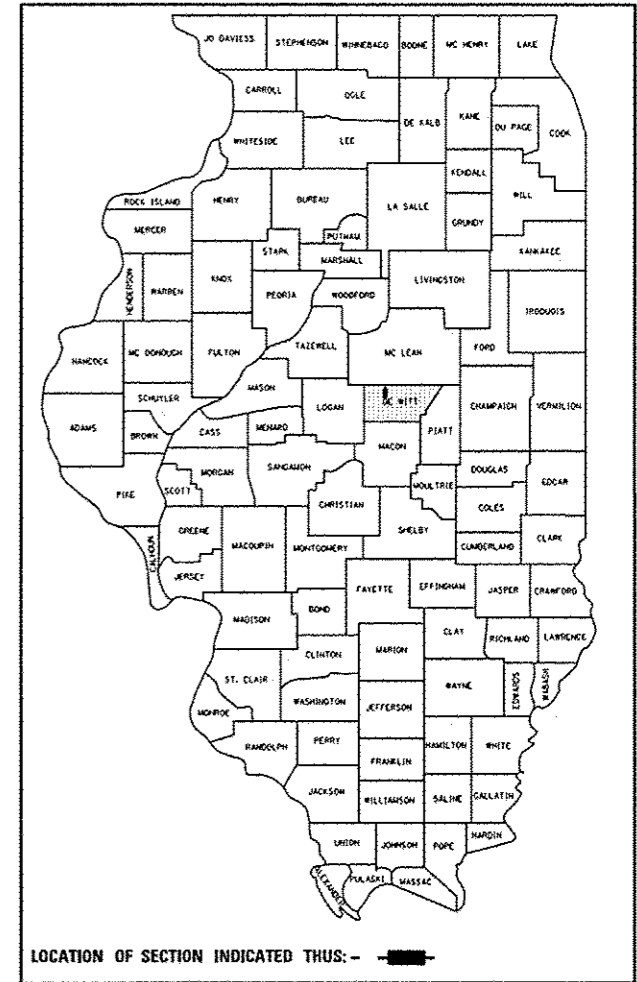
STATE OF ILLINOIS
DEPARTMENT OF TRANSPORTATION
DIVISION OF HIGHWAYS

**PROPOSED
HIGHWAY PLANS**

F.A.P. ROUTE 322 (US 51)
SECTION 54B-3, 54B-2
PROJECT ACNHPP-0322 (100)
BRIDGE SUPERSTRUCTURE REPLACEMENTS
TRIBUTARY OF LONG POINT CREEK 1.8 MILES
NORTH OF WAPELLA
DEWITT COUNTY

F.A.P. RTE.	SECTION	COUNTY	TOTAL SHEETS	SHEET NO.
322	54B-3, 54B-2	DEWITT	89	1
		ILLINOIS	CONTRACT NO. 70606	

D-95-120-06



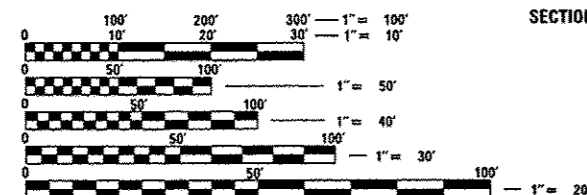
FOR INDEX OF SHEETS, SEE SHEET NO. 2

OTHER PRINCIPAL ARTERIAL

ADT = 10,600 (2011)

SU = 4.0%, MU = 9.1%

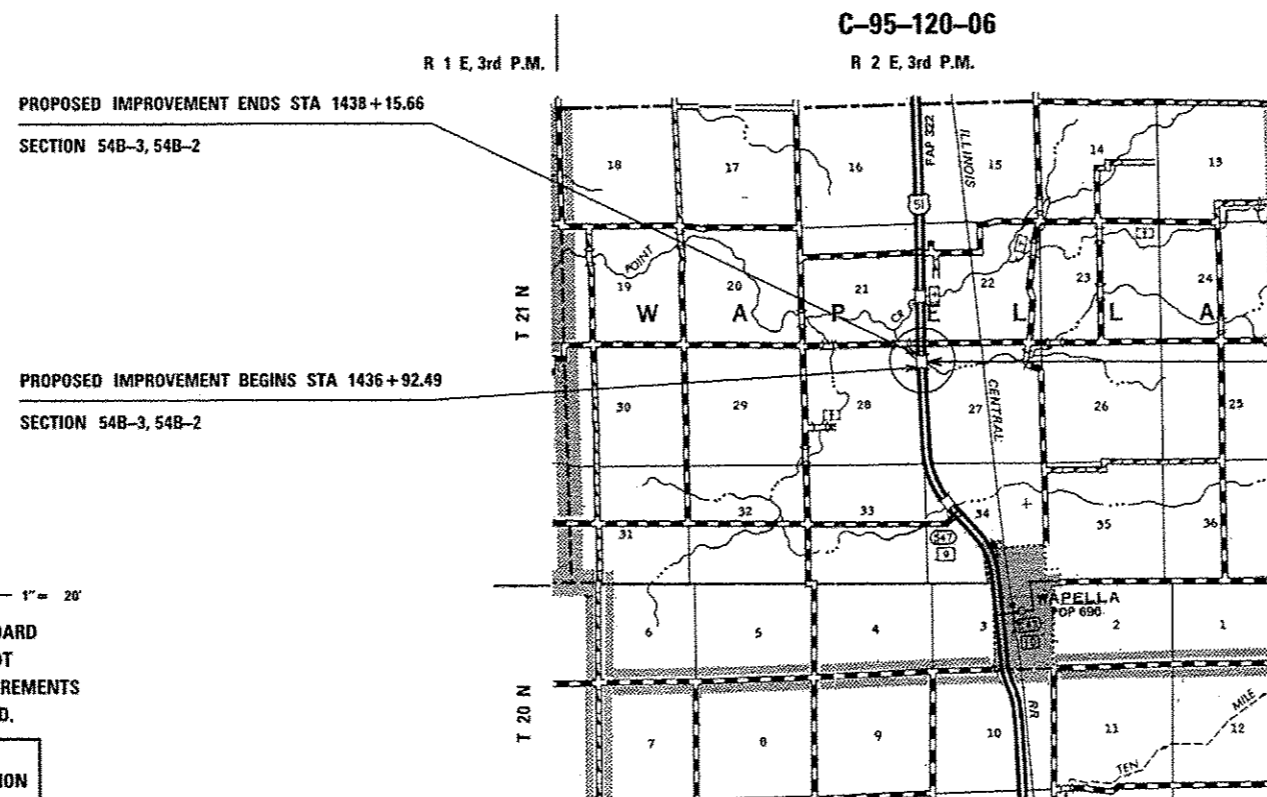
PC = 86.9%



FULL SIZE PLANS HAVE BEEN PREPARED USING STANDARD ENGINEERING SCALES. REDUCED SIZED PLANS WILL NOT CONFORM TO STANDARD SCALES. IN MAKING MEASUREMENTS ON REDUCED PLANS, THE ABOVE SCALES MAY BE USED.

J.U.L.I.E.
JOINT UTILITY LOCATION INFORMATION FOR EXCAVATION
1-800-892-0123 WAPELLA TOWNSHIP
OR 811

PROJECT ENGINEER: JASON W. STULTS
PROJECT MANAGER: RUSTIN B. KEYS
PROJECT DESIGNER: DAVID F. JAYME
PHONE NUMBER: 217-465-4181
CONTRACT NO. 70606



GROSS LENGTH = 123.17 FT. = 0.023 MILE
NET LENGTH = 123.17 FT. = 0.023 MILE



PROPOSED SUPERSTRUCTURE REPLACEMENTS
EX S.N. 020-0046 (NB), S.N. 020-0047 (SB)
STA. 1437+48.50 (NB), STA. 1437+53.04 (SB)
SINGLE SPAN 64'-0" B-B ABUTMENTS (NB), 64'-5" B-B ABUTMENTS (SB)
HORIZ. CLR = 41'-4" (NB), 41'-5" (SB)
SKEW = 0 DEGREES (NB), 6 DEGREES 30 MINUTES (SB)

STATE OF ILLINOIS
DEPARTMENT OF TRANSPORTATION
DIVISION OF HIGHWAYS

SUBMITTED JANUARY 31, 2014
Joseph E. Crowe
DEPUTY DIRECTOR OF HIGHWAYS, REGION ENGINEER

March 21, 2014
John D. Baranzelli, P.E.
ENGINEER OF DESIGN AND ENVIRONMENT

March 21, 2014
Omer Osman, P.E.
DIRECTOR OF HIGHWAYS, CHIEF ENGINEER

PRINTED BY THE AUTHORITY
OF THE STATE OF ILLINOIS