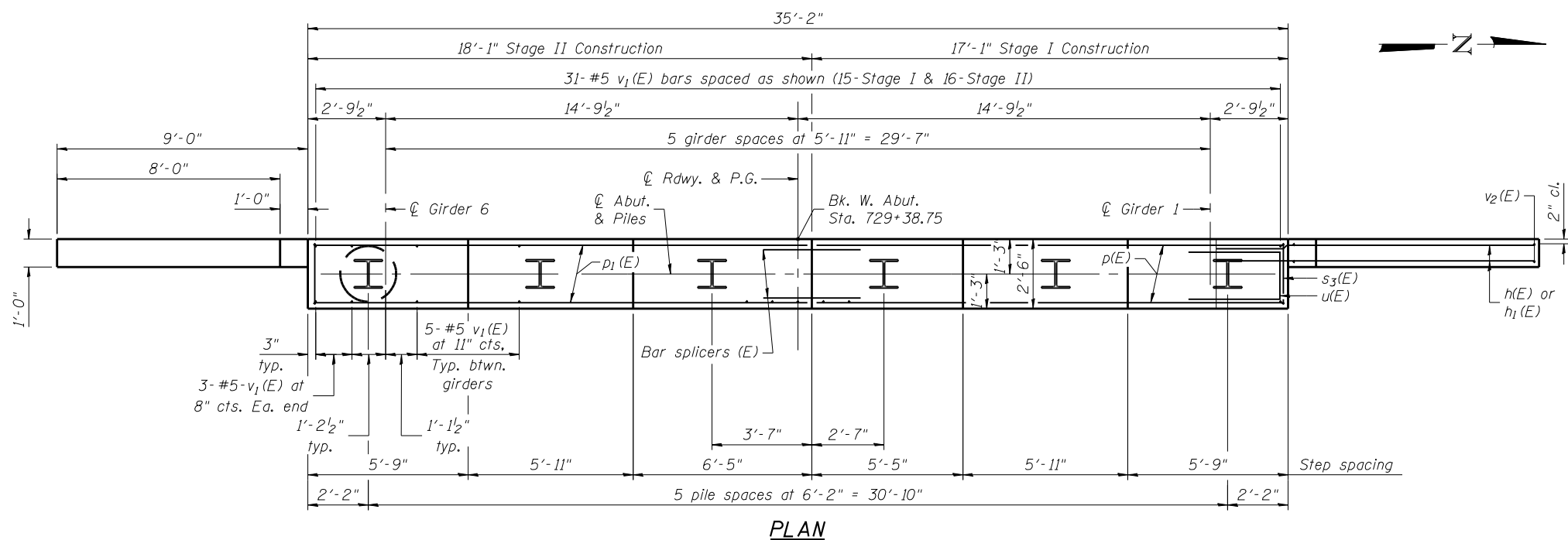
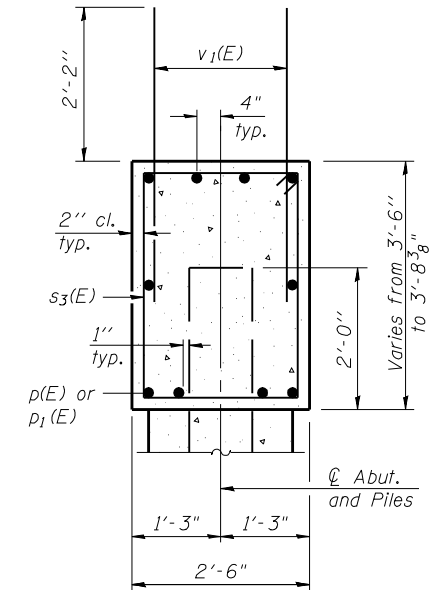
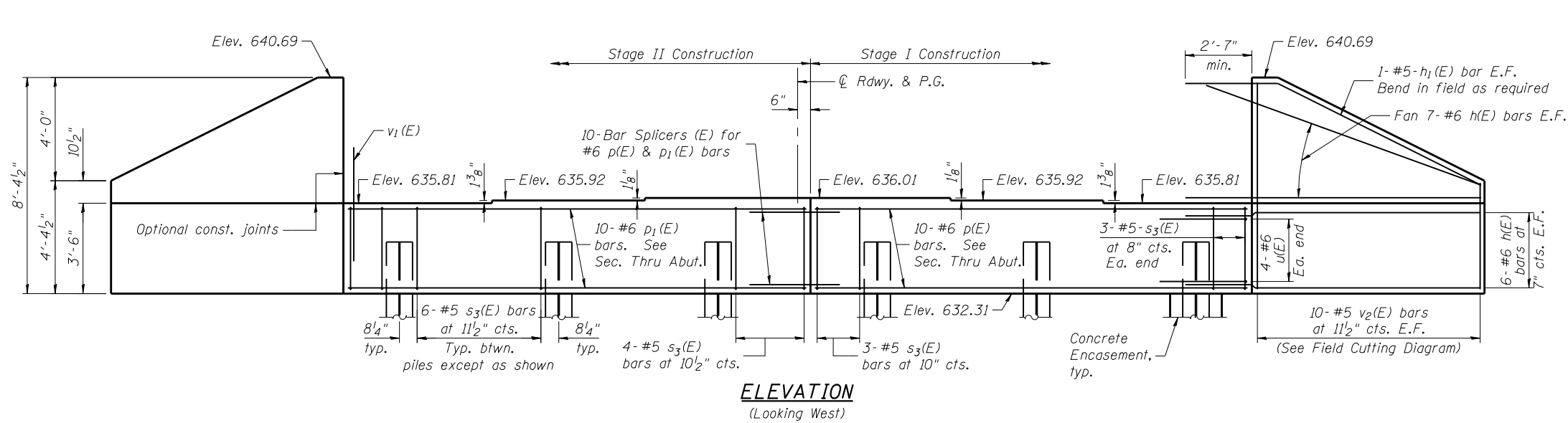
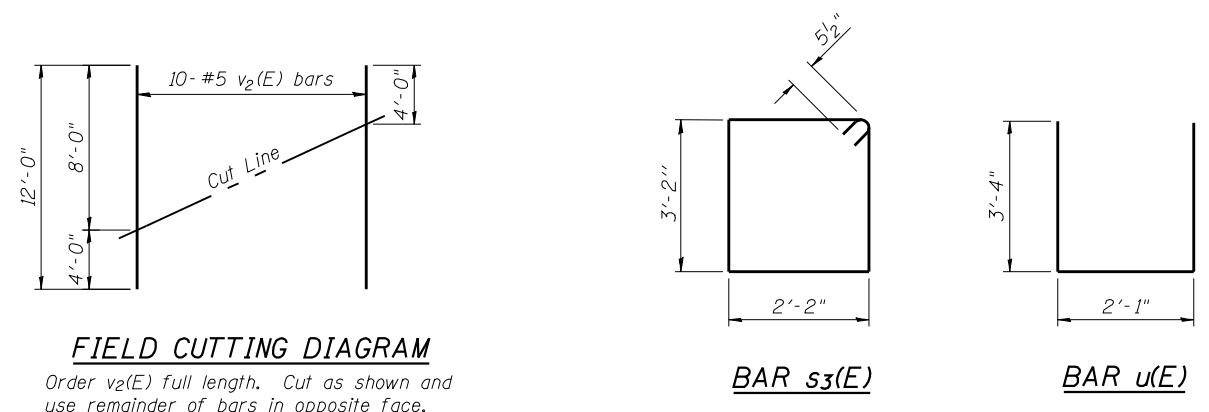


Notes:
Pour steps monolithically with cap.



PILE DATA
 Type: Steel HP12x53
 Nominal Required Bearing: 355 Kips
 Factored Resistance Available: 195 Kips
 Est. Length: 55'
 No. Production Piles: 5
 No. Test Piles: 1



BILL OF MATERIAL

Bar	No.	Size	Length	Shape
h(E)	52	#6	11'-5"	—
h1(E)	4	#5	12'-4"	—
p(E)	10	#6	16'-9"	—
p1(E)	10	#6	17'-9"	—
s3(E)	37	#5	11'-7"	□
u(E)	8	#6	8'-9"	□
v1(E)	62	#5	4'-4"	—
v2(E)	20	#5	12'-0"	—
Structure Excavation		Cu. Yd.	95	
Concrete Structures		Cu. Yd.	16.1	
Reinforcement Bars, Epoxy Coated		Pound	2540	
Furnishing Steel Piles HP12x53		Foot	275	
Driving Piles		Foot	275	
Test Pile Steel HP12x53		Each	1	
Concrete Encasement		Cu. Yd.	2.1	

For details of Bar Splicers, see sheet 30 of 33.
 For details of piles and Concrete Encasement, see sheet 29 of 33.

PRINT DATE: 3/24/2014 12:48:11 PM Z:\10053301\1119 over-Vermillion.dgn\Bridges\Final\Plotsheets\09220207-70614-024-West-Abut.dgn

EFK Moen, LLC
 Civil Engineering Design
 331 Salem Place, Suite 225
 Fairview Heights, IL 62208
 Phone 618-206-4250

USER NAME = cdl	DESIGNED - CTW	REVISED -
	CHECKED - CDL	REVISED -
PLOT SCALE = 0.2" = 1' / IN.	DRAWN - CTW	REVISED -
PLOT DATE = 3/24/2014	DATE - 3/24/2014	REVISED -

STATE OF ILLINOIS
DEPARTMENT OF TRANSPORTATION

WEST ABUTMENT DETAILS
STRUCTURE NO. 092-0207
 SHEET NO. 24 OF 33 SHEETS

F.A.P. RTE.	SECTION	COUNTY	TOTAL SHEETS	SHEET NO.
711	116BR-1	VERMILION	84	54
CONTRACT NO. 70614				
ILLINOIS FED. AID PROJECT				