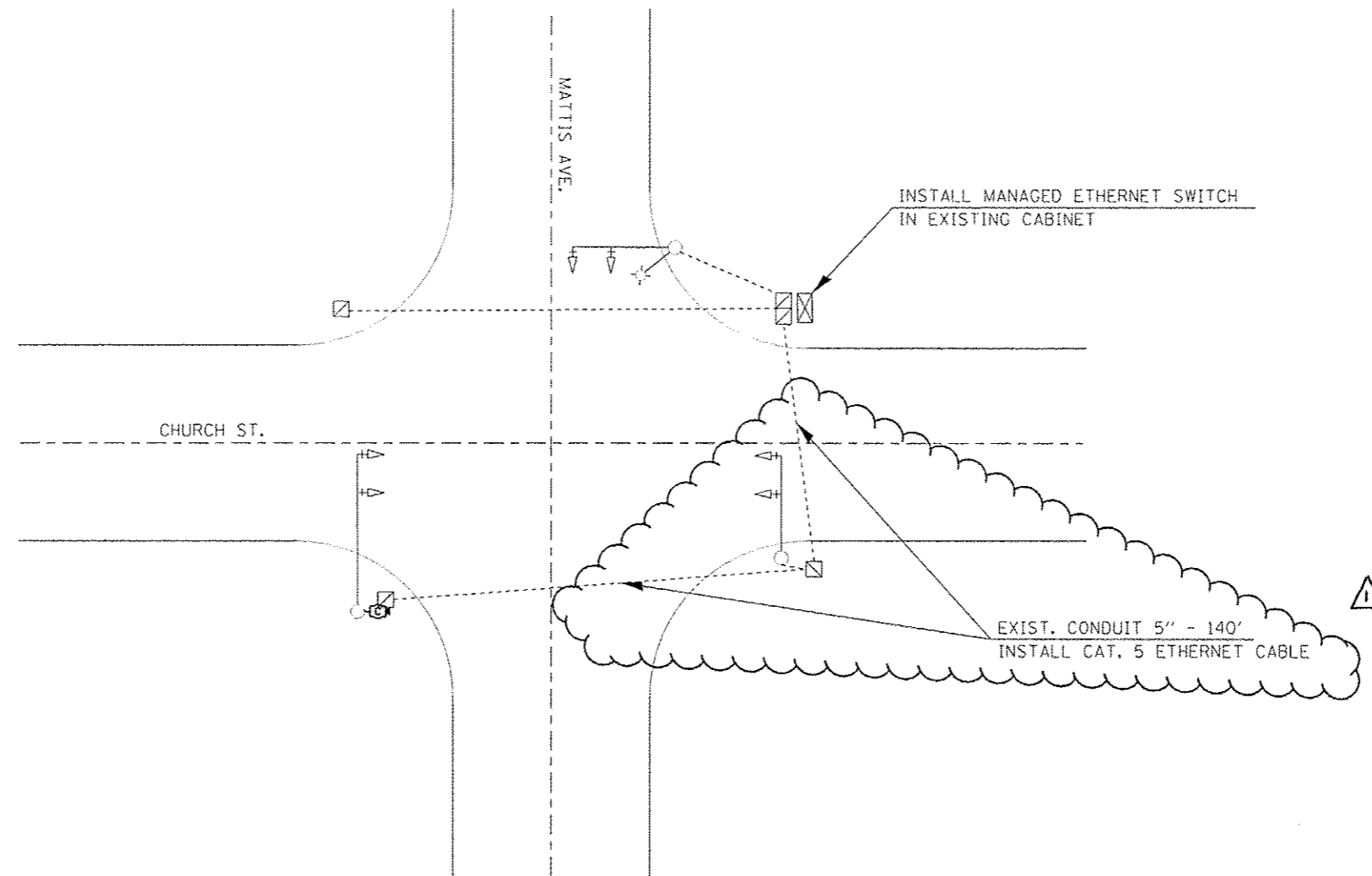


**PTZ CAMERA INSTALLATION**

**MATTIS AVE.  
&  
CHURCH ST.**

(NOT TO SCALE)

**CAMERA & CONDUIT /CABLE LAYOUT**



**BILL OF MATERIALS**

MATTIS AVE. & CHURCH RD.

ITEM	UNIT	QUANTITY
ETHERNET SWITCH	EACH	1
CLOSED CIRCUIT TELEVISION CAMERA	EACH	1
CAMERA MOUNTING ASSEMBLY	EACH	1

FILE NAME = c:\p\work\p\widot\biggord\td8348463\PTZ	USER NAME = biggord	DESIGNED -	REVISED -	<b>STATE OF ILLINOIS DEPARTMENT OF TRANSPORTATION</b>	SCALE:	SHEET	OF	SHEETS	STA.	TO STA.	F.A.P. RTE.	SECTION	COUNTY	TOTAL SHEETS	SHEET NO.
	camera plans.dgn	DRAWN -	REVISED -								VAR.	FY2014 ITS-1	CHAMPAIGN	74	57
	PLOT SCALE = 1/8" = 1' / 2" m	CHECKED -	REVISED -								CONTRACT NO. 70A26				
MODELNAME*	PLOT DATE = 4/5/2014	DATE -	REVISED -								[ILLINOIS] FED. AID PROJECT				

△ REV. 4-10-14