

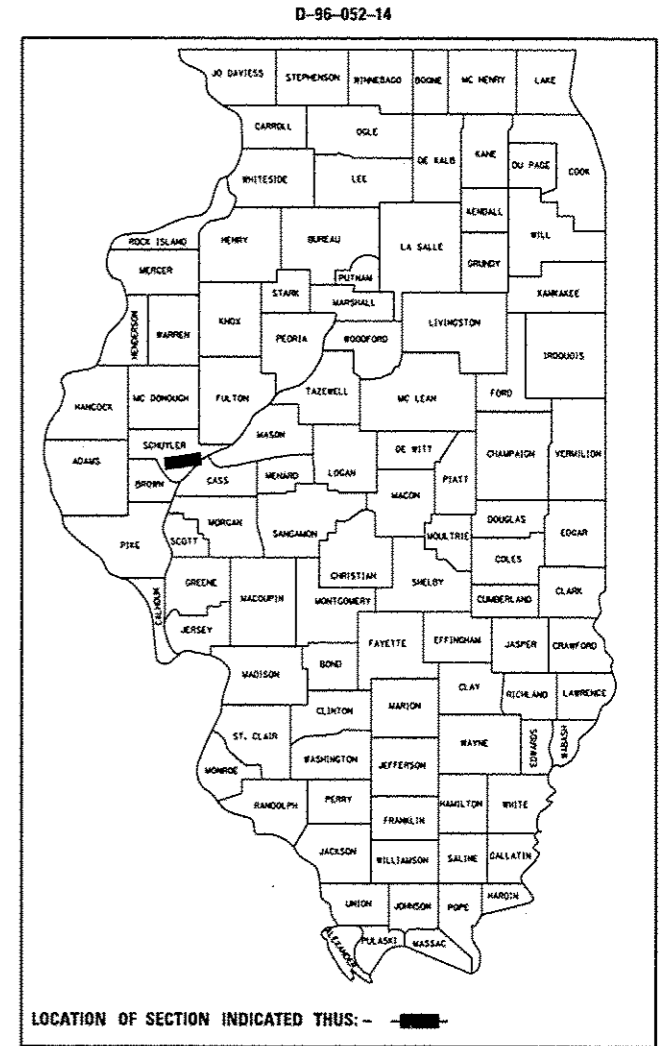
STATE OF ILLINOIS
DEPARTMENT OF TRANSPORTATION
DIVISION OF HIGHWAYS
PROPOSED
CONTRACT MAINTENANCE

FOR INDEX OF SHEETS, SEE SHEET NO. 2

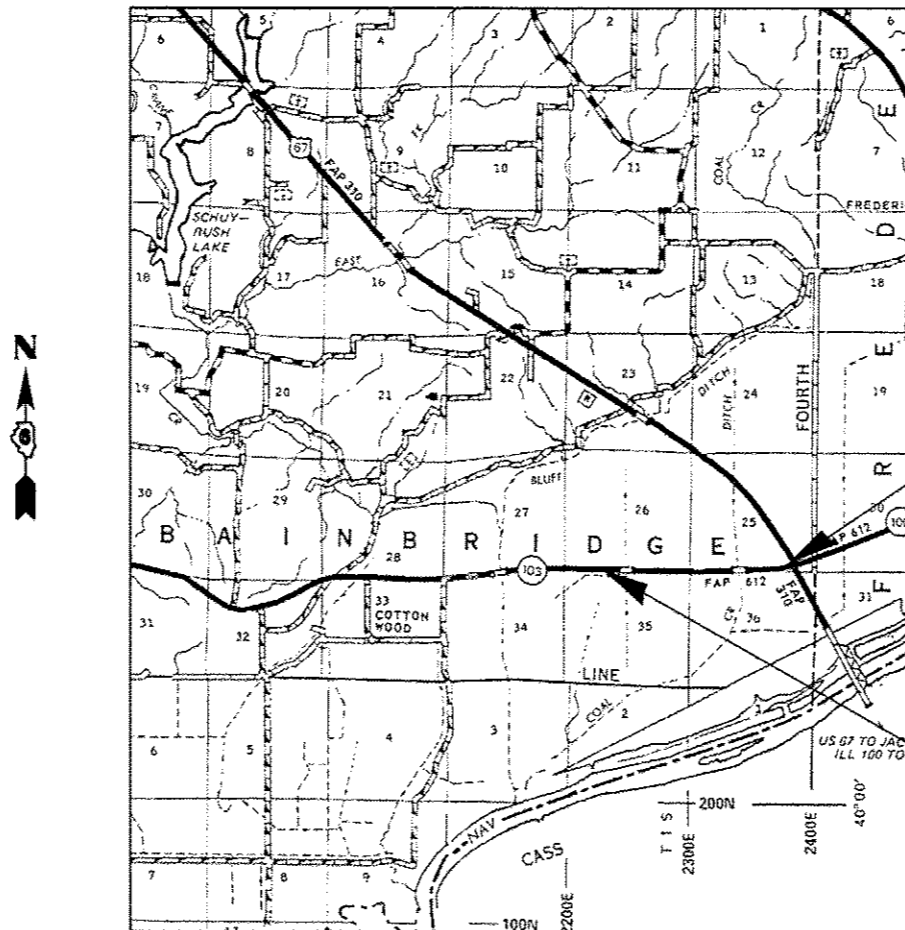
FAP 612 (IL 103)
 SECTION (101) I-3

SCHUYLER COUNTY

F.A.P. RTE.	SECTION	COUNTY	TOTAL SHEETS	SHEET NO.
612	(101) I-3	SCHUYLER	5	1
FED. ROAD DIST. NO.		ILLINOIS	CONTRACT NO. 72G81	



C-96-052-14
 R 1 W

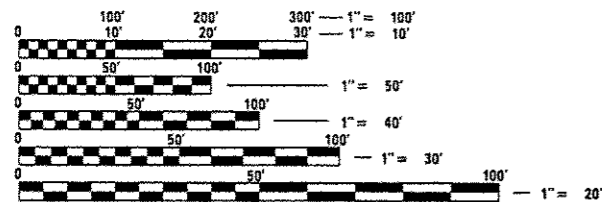


END PROJECT
 STA. 14 + 623.846

BEGIN PROJECT
 STA. 11 + 887.961

GROSS LENGTH = 8,976.00 FT. = 1.700 MILE

ADT = 650
 SU = 30
 MU = 60



FULL SIZE PLANS HAVE BEEN PREPARED USING STANDARD ENGINEERING SCALES. REDUCED SIZED PLANS WILL NOT CONFORM TO STANDARD SCALES. IN MAKING MEASUREMENTS ON REDUCED PLANS, THE ABOVE SCALES MAY BE USED.

J.U.L.I.E.
 JOINT UTILITY LOCATION INFORMATION FOR EXCAVATION
 1-800-892-0123
 OR 811

PLAN AND CONTRACT TECHNICIAN
 TIMOTHY SHARP (217)782-7743

CONTRACT NO. 72G81

STATE OF ILLINOIS
 DEPARTMENT OF TRANSPORTATION
 DIVISION OF HIGHWAYS

SUBMITTED FEBRUARY 13 20 14
Rose J. Smith
 DEPUTY DIRECTOR OF HIGHWAYS, REGION ENGINEER

March 21 20 14
John D. Baramzelli, P.E.
 ENGINEER OF DESIGN AND ENVIRONMENT

March 21 20 14
Omer Osman, P.E.
 DIRECTOR OF HIGHWAYS, CHIEF ENGINEER

**PRINTED BY THE AUTHORITY
 OF THE STATE OF ILLINOIS**

INDEX OF SHEETS

1. COVER
2. INDEX OF SHEETS, GENERAL NOTES, AND HIGHWAY STANDARDS
3. SUMMARY OF QUANTITIES
4. PLAN
5. TYPICAL SECTIONS

HIGHWAY STANDARDS

- 442201-03 CLASS C AND D PATCHES
 701001-02 OFF-RD OPERATIONS, 2L, 2W, MORE THAN 15' AWAY FROM EDGE OF PAVEMENT
 701006-05 OFF-RD OPERATIONS, 2L, 2W, 15' TO 24" FROM EDGE OF PAVEMENT
 701011-04 OFF-RD MOVING OPERATIONS, 2L, 2W, DAY ONLY
 701201-04 LANE CLOSURE, 2L, 2W, DAY ONLY, FOR SPEEDS > 45 MPH
 701301-04 LANE CLOSURE, 2L, 2W, SHORT TIME OPERATIONS
 701311-03 LANE CLOSURE, 2L, 2W, MOVING OPERATIONS DAY ONLY
 701901-03 TRAFFIC CONTROL DEVICES

GENERAL NOTES

1. ANY REFERENCE TO THE STANDARDS THROUGHOUT THE PLANS SHALL BE INTERPRETED TO BE THE LATEST STANDARDS OF THE DEPARTMENT AS INCLUDED IN THE PLANS.

STATE OF ILLINOIS DEPARTMENT OF TRANSPORTATION DIVISION OF HIGHWAYS DISTRICT 6	
EXAMINED	February 11 20 14 <i>Michael P. for Bill Burger</i> ENGINEER OF OPERATIONS
EXAMINED	FEBRUARY 4 20 14 <i>Tommy F. J.</i> ENGINEER OF PROJECT IMPLEMENTATION
EXAMINED	Feb 6 20 14 <i>ARMU</i> ENGINEER OF PROGRAM DEVELOPMENT

FILE NAME *	USER NAME * sharp1d	DESIGNED -	REVISED -	STATE OF ILLINOIS DEPARTMENT OF TRANSPORTATION	INDEX OF SHEETS, HIGHWAY STANDARDS AND GENERAL NOTES	F.A.P RTE.	SECTION	COUNTY	TOTAL SHEETS	SHEET NO.	
o:\pwork\pedit\sharp1d\038114B\0672081-sht-genote.dgn		DRAWN -	REVISED -			612	(101) I-3	SCHUYLER	5	2	
PLOT SCALE * 2.0000 ' / in.		CHECKED -	REVISED -			CONTRACT NO. 72681		ILLINOIS FED. AID PROJECT			
PLOT DATE * Feb-11-2014 8:31:41AM		DATE -	REVISED -			SCALE:	SHEET OF SHEETS				

CODE NO.	ITEM	UNIT	TOTAL QUANTITY	CONSTR. CODE
				100% STATE
				ROADWAY
				0005
				S. N.
44201373	CLASS C PATCHES, TYPE I, 12 INCH	SQ YD	200	200
44201377	CLASS C PATCHES, TYPE II, 12 INCH	SQ YD	225	225
44201381	CLASS C PATCHES, TYPE III, 12 INCH	SQ YD	200	200
44201383	CLASS C PATCHES, TYPE IV, 12 INCH	SQ YD	500	500
67100100	MOBILIZATION	L SUM	1	1
70100450	TRAFFIC CONTROL AND PROTECTION, STANDARD 701201	L SUM	1	1

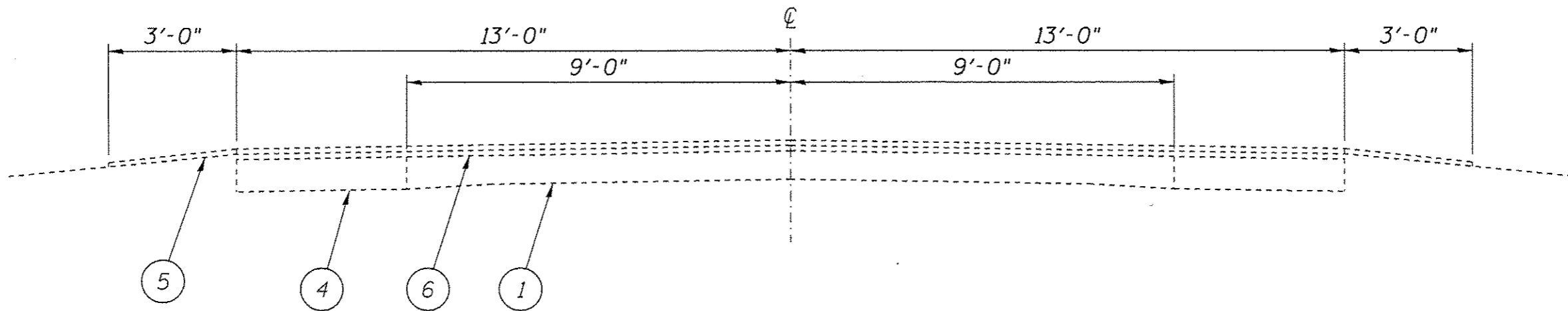
6



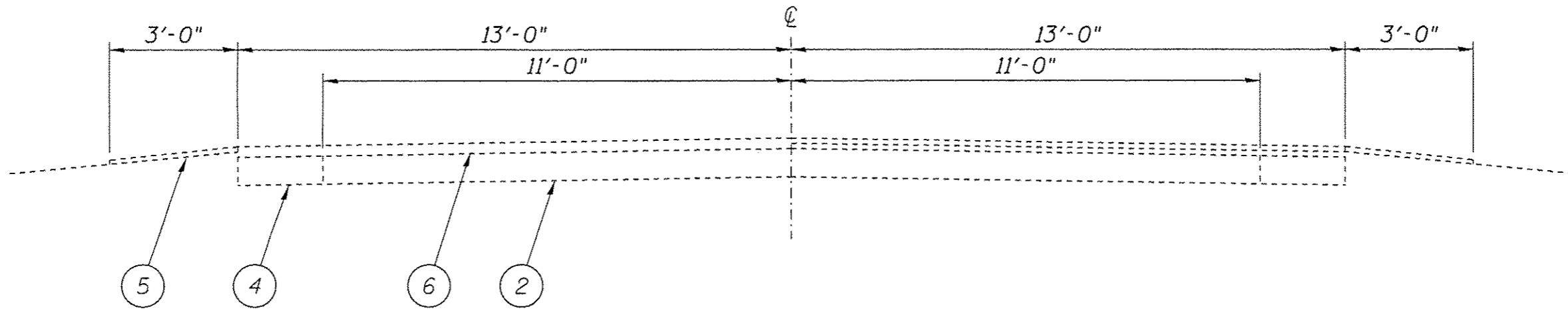
BEGIN PROJECT
STA. 11+887.961

END PROJECT
STA. 14+623.846

FILE NAME *	USER NAME * shorptd	DESIGNED -	REVISED -	STATE OF ILLINOIS DEPARTMENT OF TRANSPORTATION	PLAN		F.A.P. RTE.	SECTION	COUNTY	TOTAL SHEETS	SHEET NO.
c:\p\work\p\sidot\shorptd\0381140\067201-ahtr-plan.dgn	DRAWN -	REVISED -	612				(101) I-3	SCHUYLER	5	4	
PLOT SCALE * 110.000000' / 1in.	CHECKED -	REVISED -	CONTRACT NO. 72081								
PLOT DATE * Feb-11-2014 09:34:25AM	DATE -	REVISED -	SCALE:		SHEET _	OF _	SHEETS	STA. _	TO STA. _	ILLINOIS FED. AID PROJECT	



STA. 11+887.961 TO 14+379.736



STA. 14+379.736 TO 14+623.846

LEGEND

- 1- EXIST. P.C.C. PAVEMENT 9-6-9
- 2- EXIST. P.C.C. BASE COURSE 8"
- 3- EXIST. P.C.C. BASE COURSE 9"
- 4- EXIST. H.M.A. BASE COURSE WIDENING 9"
- 5- EXIST. H.M.A. SHOULDER
- 6- EXIST. H.M.A. SURFACE COURSE
- 7- EXIST. GRANULAR BASE 4"

FILE NAME *	USER NAME * sherpaid	DESIGNED -	REVISED -	STATE OF ILLINOIS DEPARTMENT OF TRANSPORTATION	TYPICAL SECTION	F.A.P. RTE.	SECTION	COUNTY	TOTAL SHEETS	SHEET NO.
c:\pwork\puidot\sherpaid\0301148\0672081-shr-typical.dgn	DRAWN -	REVISED -	612			(101) I-3	SCHUYLER	5	5	
PLOT SCALE * 3/8" = 1'	CHECKED -	REVISED -	CONTRACT NO. 72GB1							
SMT_PLAN	DATE -	REVISED -	SCALE:			SHEET	OF	SHEETS	STA.	TO STA.