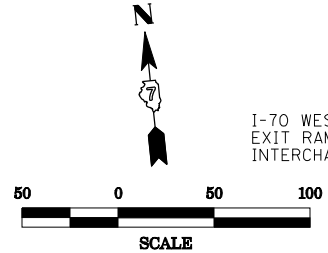


PLAN	SURVEYED	BY	DATE
	PLOTTED		
	CHECKED		
	ALIGNED		
	FILE NAME		
	NO.		

PROFILE	SURVEYED	BY	DATE
	PLOTTED		
	CHECKED		
	GRADES		
	STRUCTURE		
	NOT AT THIS OFFICE		
	NO.		

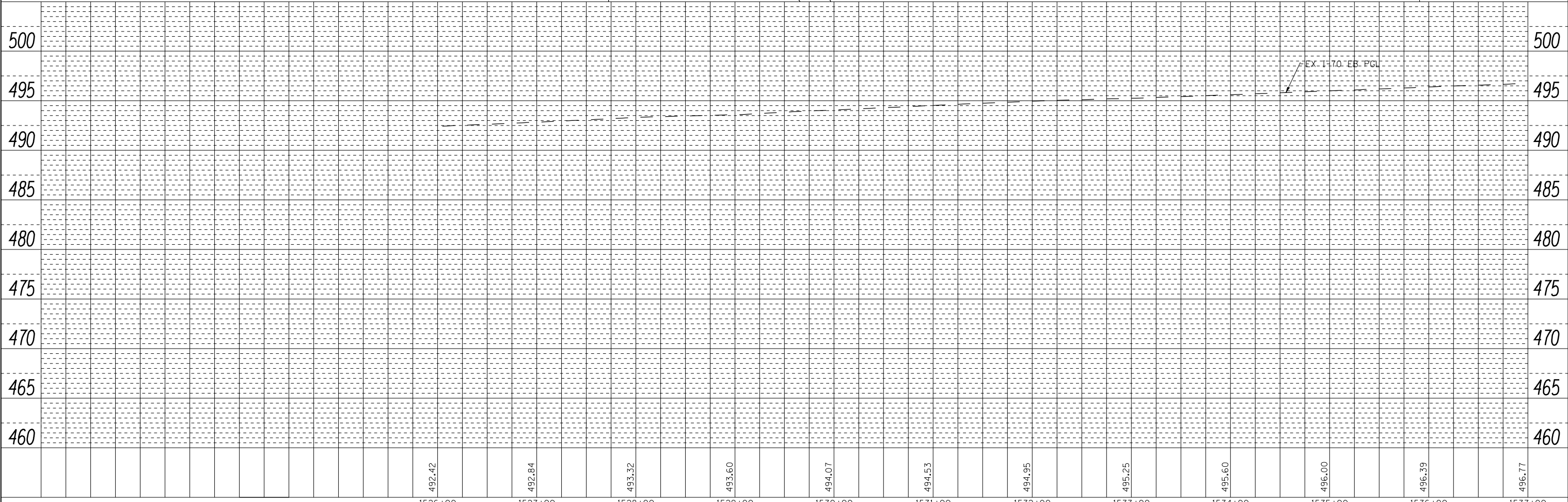
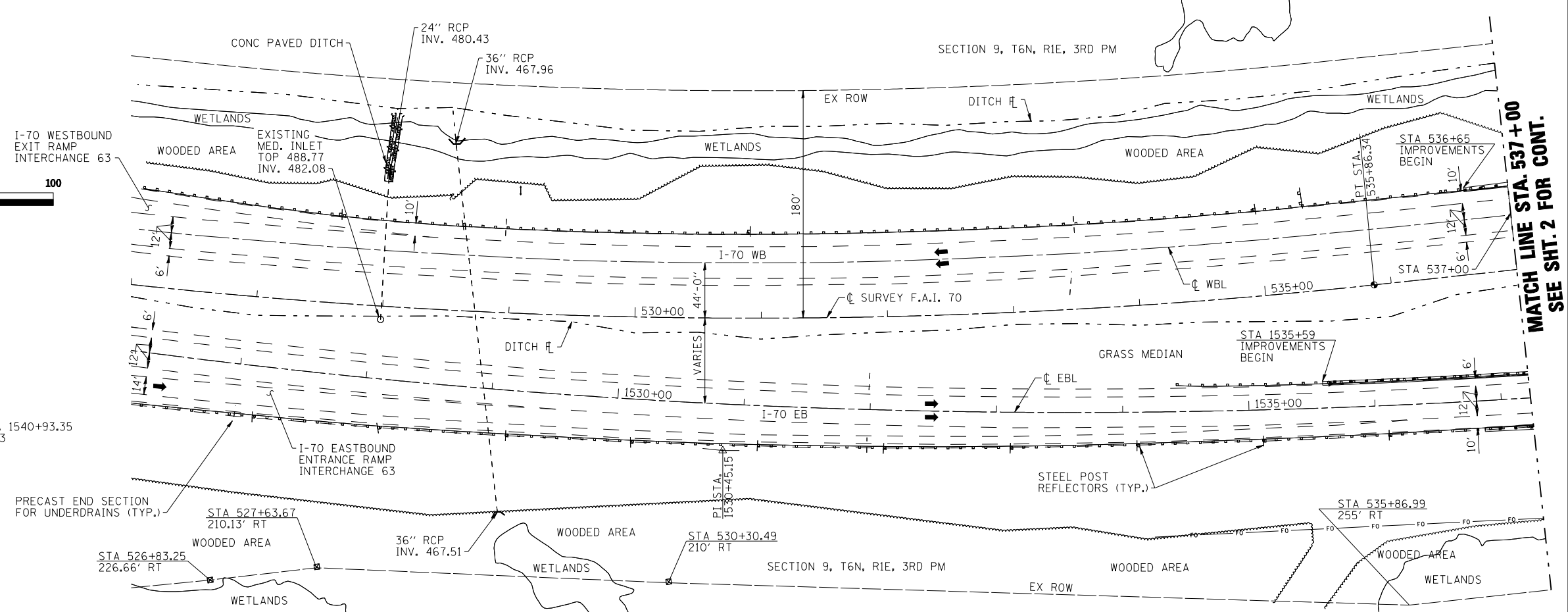


☐ SURVEY F.A.I. 70

PI STA 527+71.29
 $\Delta = 20^\circ 34' 47''$ (LT)
 $D = 1^\circ 14' 55''$
 $R = 4,588.31'$
 $T = 833.00'$
 $L = 1,648.05'$
 $E = 75.00'$
 PC STA 519+38.29
 PT STA 535+86.34

☐ EBL CURVE DATA

PI STA 1530+45.15
 $\Delta = 22^\circ 14' 33''$ (LT)
 $D = 1^\circ 00' 32''$
 $R = 5,678.71'$
 $T = 1,116.30'$
 $L = 2,204.50'$
 $E = 108.68'$
 $S.E. = 0.04\%$
 S.E. TRANSITION STA 1540+93.35
 TO STA 1542+60.23
 $T.R. = 46.88'$
 $S.E. RUN = 120.00'$
 PC STA 1519+28.85
 PT STA 1541+33.35



MATCH LINE STA. 537+00
SEE SHT. 2 FOR CONT.

PRINT DRIVER = L.D.L.B.R. & P.L.
 MODEL NUMBER = 1000-000-000
 FILE NAME = D:\74715-1\plan\plan.dwg



USER NAME = has	DESIGNED - ELH	REVISED -
ESCA PROJECT NO. 1000.05	DRAWN - HAS	REVISED -
SCALEs: (HORIZ) 1"=50' (VERT) 1"=5'	CHECKED - ELH	REVISED -
PLOT DATE = 1/29/2014 1:44:30 PM	DATE - 01/14	REVISED -

**STATE OF ILLINOIS
DEPARTMENT OF TRANSPORTATION**

I-70 PLAN & EB PROFILE		
SCALE: 1"=50'	SHEET NO. 4 OF 6 SHEETS	STA. 1526+00.00 TO STA. 1537+00.00

F.A.I. RTE.	SECTION	COUNTY	TOTAL SHEETS	SHEET NO.
70	(26-3B-1, 3B-1(3))BR	FAYETTE	277	31
CONTRACT NO. 74175				
FED. ROAD DIST. NO. ILLINOIS FED. AID PROJECT AID				