



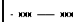

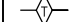
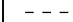
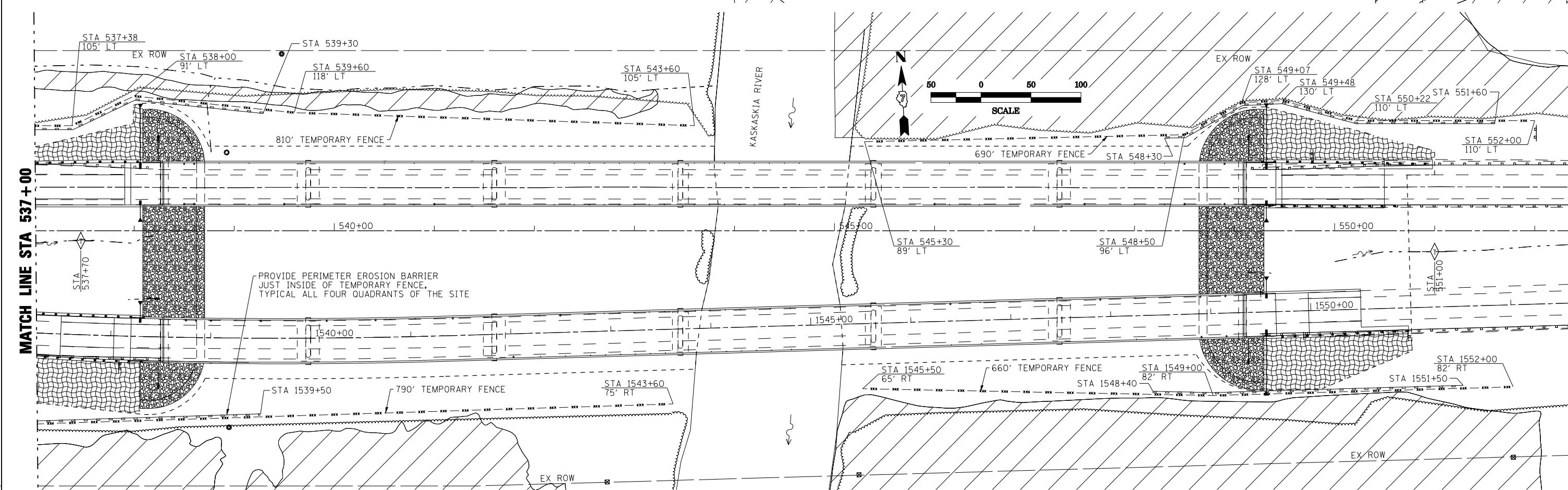
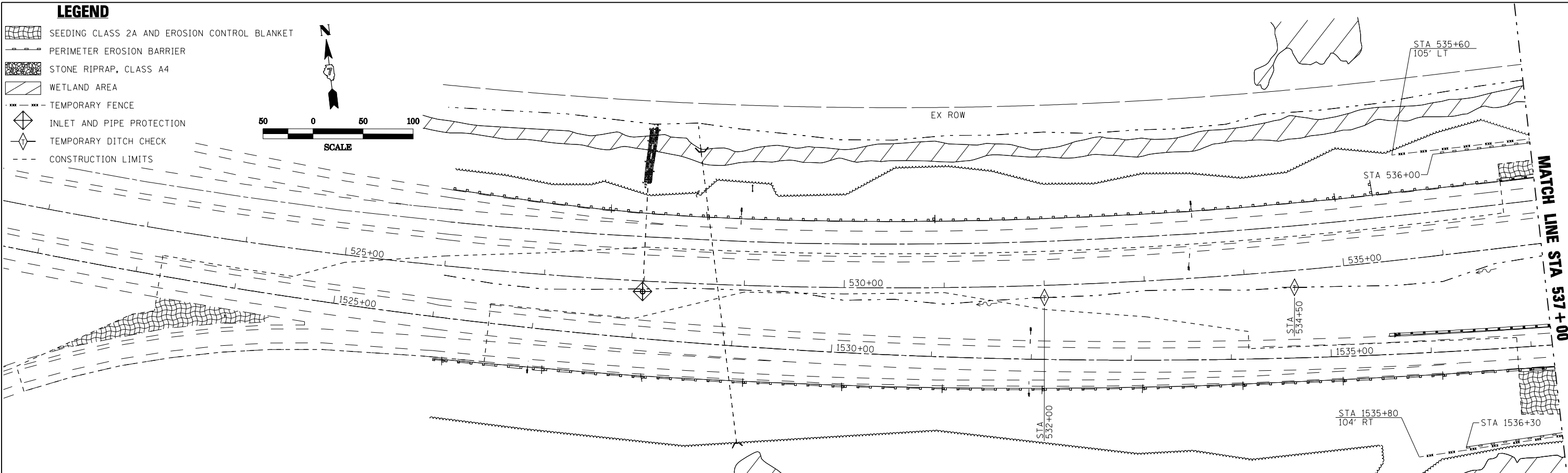


LEGEND

-  SEEDING CLASS 2A AND EROSION CONTROL BLANKET
-  PERIMETER EROSION BARRIER
-  STONE RIPRAP, CLASS A4
-  WETLAND AREA
-  TEMPORARY FENCE
-  INLET AND PIPE PROTECTION
-  TEMPORARY DITCH CHECK
-  CONSTRUCTION LIMITS



EROSION AND SEDIMENT CONTROL PLANS NEAR STRUCTURES

PRINT DRIVER = LUD-ER-BAR-01
 SCALE NAME = PLOT
 FILE NAME = I:\2015\1558\1558.dwg



USER NAME = has	DESIGNED - ELH	REVISED -
ESCA PROJECT NO. 1000.05	DRAWN - HAS	REVISED -
PLOT SCALE = 0.1667' / IN.	CHECKED - RDP	REVISED -
PLOT DATE = 1/29/2014 1:58:10 PM	DATE - 01/14	REVISED -

**STATE OF ILLINOIS
DEPARTMENT OF TRANSPORTATION**

EROSION AND SEDIMENT CONTROL PLANS

SCALE: 1" = 50' SHEET NO. 2 OF 2 SHEETS STA. TO STA.

F.A.I. RTE. 70	SECTION	COUNTY FAYETTE	TOTAL SHEETS 277	SHEET NO. 71
FED. ROAD DIST. NO. ILLINOIS FED. AID PROJECT			CONTRACT NO. 74175	