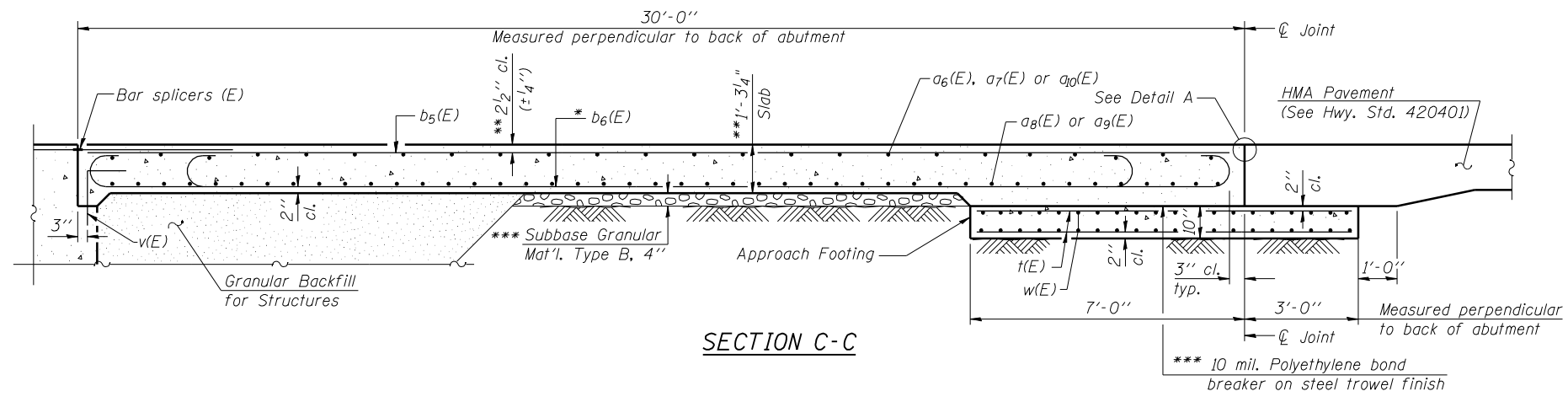
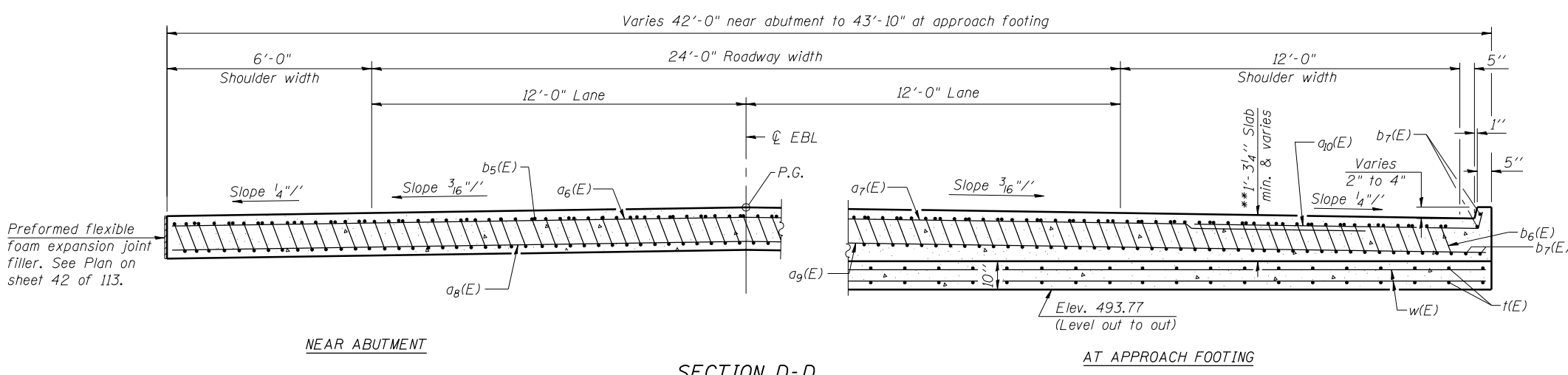


Notes:
 See sheet 42 of 113 for Detail A and View B-B.
 Approach slab and curb concrete shall be paid for as Concrete Superstructure.
 Approach footing concrete shall be paid for as Concrete Structures.
 Reinforcement shall be paid for as Reinforcement Bars, Epoxy Coated.
 For v(E) bar details, see sheet 83 of 113.
 The approach footing maximum applied service bearing pressure (Qmax) = 2.0 ksf.
 For bar splicer details, see sheet 107 of 113.
 Cost of excavation for approach footing included with Concrete Structures.
 For Granular Backfill for Structures and drainage treatment details, see sheet 3 of 113.

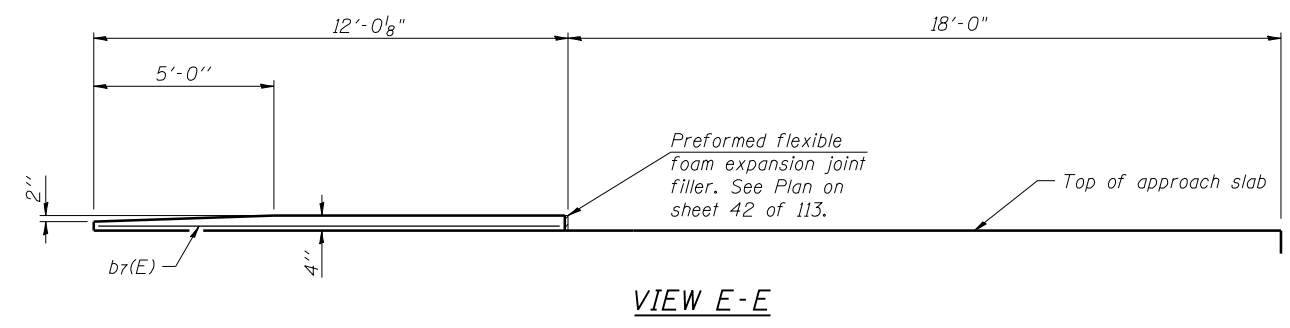


SECTION C-C

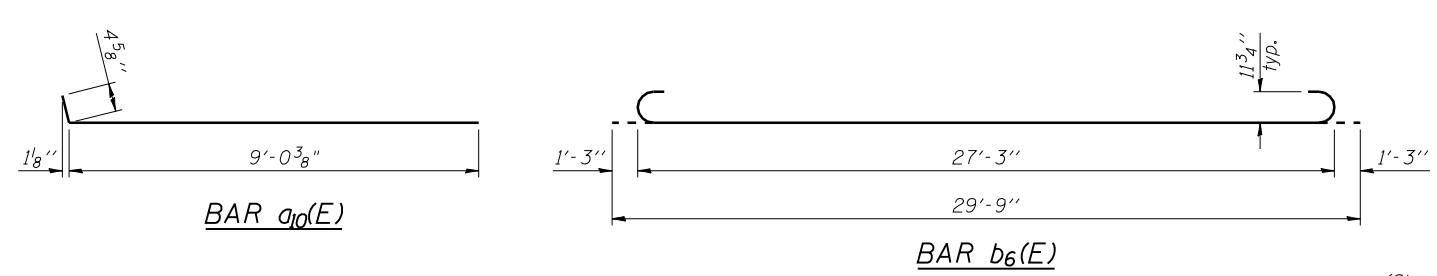


SECTION D-D
 (See Plan for dimensions not shown)

* Tilt #9 b₆(E) bars as required to maintain clearance.
 ** Prior to grinding.
 *** Cost included with Concrete Superstructure.



VIEW E-E



EAST APPROACH
 BILL OF MATERIAL

Bar	No.	Size	Length	Shape
a ₆ (E)	30	#4	22'-5"	—
a ₇ (E)	10	#4	30'-0"	—
a ₈ (E)	28	#5	41'-8"	—
a ₉ (E)	18	#5	43'-6"	—
a ₁₀ (E)	20	#4	9'-5"	⌋
b ₅ (E)	34	#4	29'-8"	—
b ₆ (E)	101	#9	29'-9"	⌋
b ₇ (E)	8	#4	11'-8"	—
t(E)	88	#4	9'-8"	—
w(E)	40	#5	43'-6"	—
Concrete Superstructure			Cu. Yd.	63.8
Concrete Structures			Cu. Yd.	13.6
Reinforcement Bars, Epoxy Coated			Pound	16150

(Sheet 2 of 2)



USER NAME = hos	DESIGNED - MTD	08/13	REVISED -
ESCA PROJECT NO. 1070.09	CHECKED - SHL	08/13	REVISED -
	DRAWN - DWH/JPC	08/13	REVISED -
PLOT DATE = 1/28/2014 1:12:50 PM	CHECKED - ELH	11/13	REVISED -

STATE OF ILLINOIS
 DEPARTMENT OF TRANSPORTATION

EAST BRIDGE APPROACH SLAB DETAILS - EB
 STRUCTURE NO. 026-0107

SHEET NO. 43 OF 113 SHEETS

F.A.I. RTE.	SECTION	COUNTY	TOTAL SHEETS	SHEET NO.
70	(26-3B-1, 3B-1(3))BR	FAYETTE	277	123
CONTRACT NO. 74175			ILLINOIS FED. AID PROJECT	