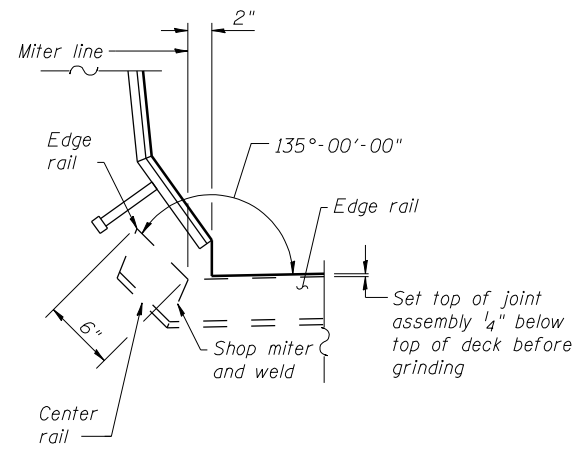
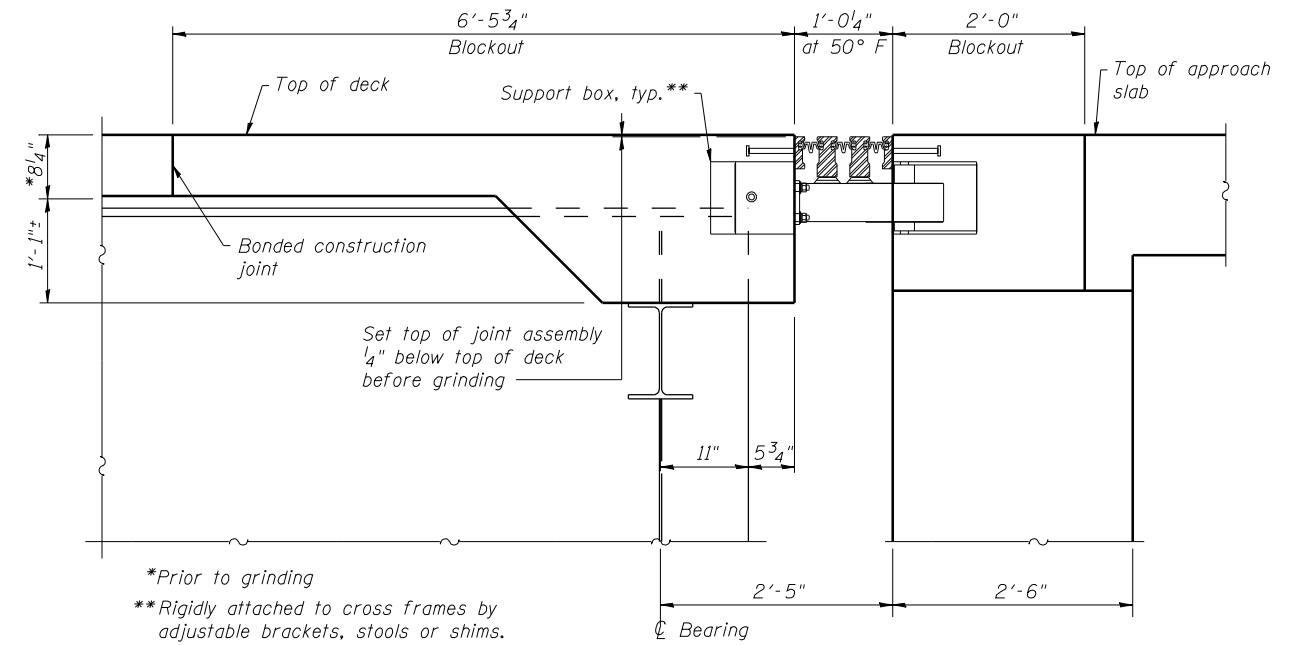


DETAIL 1

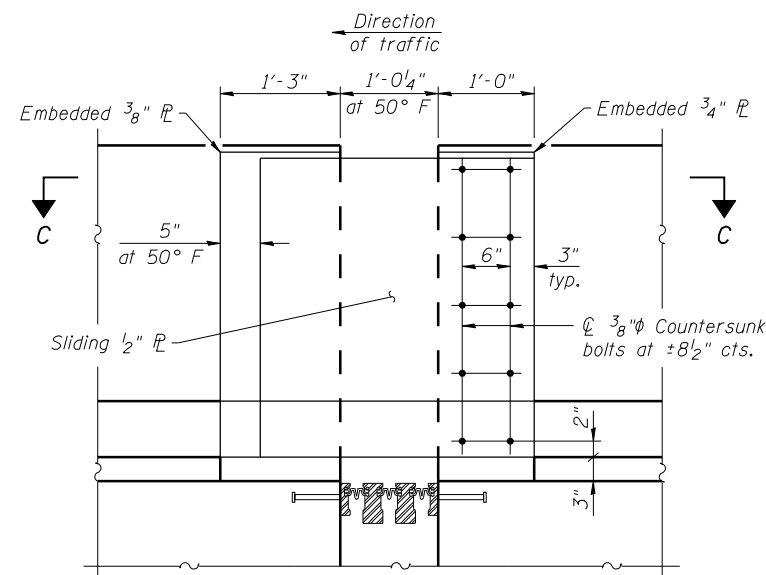


DETAIL 1A

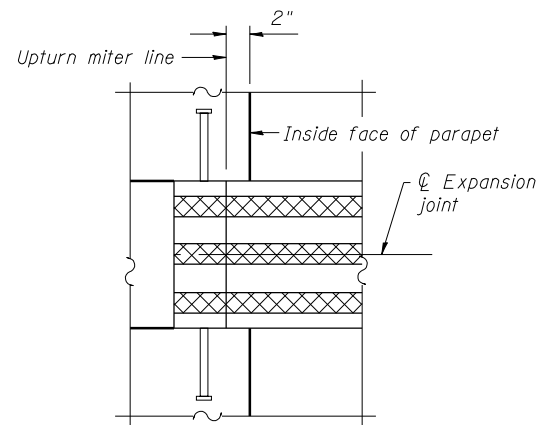


SECTION A-A

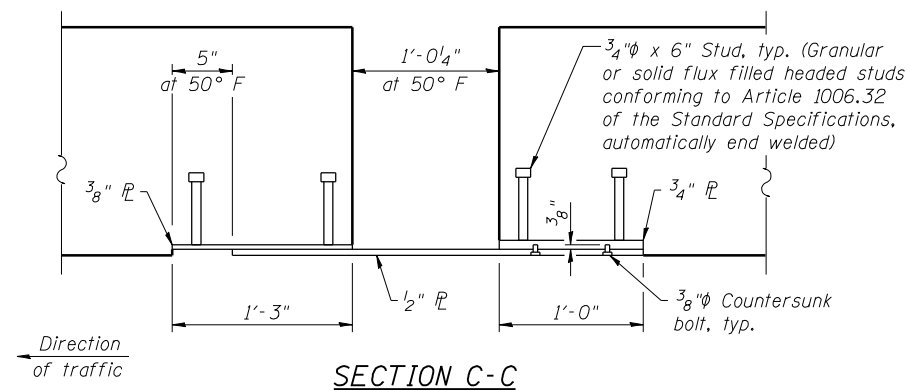
*Prior to grinding
 **Rigidly attached to cross frames by adjustable brackets, stools or shims.



VIEW B-B



DETAIL 2



SECTION C-C

GENERAL NOTES

1. Joint openings shall be adjusted according to Article 520.04 of the Standard Specifications when the concrete blockouts are cast at an ambient temperature other than 50° F.
2. The structural steel plates of the parapet sliding plate assemblies shall conform to the requirements of AASHTO M270 Grade 50, and be hot-dipped galvanized according to AASHTO M111 after fabrication.
3. The cost of furnishing and installing the parapet sliding plate assemblies is included in the cost of Modular Expansion Joints.
4. Countersunk bolts shall be in accordance with ASTM A307, Grade A.
5. Countersunk bolts and concrete inserts shall be hot-dipped galvanized according to AASHTO M232.
6. Concrete anchor studs shall be in accordance with Article 1006.32 of the Standard Specifications.
7. The modular joints shall be fabricated to conform to the roadway profile and cross slope.
8. Support box size and spacing to be determined by manufacturer. Support boxes must be spaced clear of girders to avoid interference.
9. Modular expansion joints shall be assembled in their final relative position with the ends in place for shop inspection and acceptance.
10. Blockout areas to be poured after superstructure false work has been removed and modular joint is fixed in position. Quantity of concrete is included with Concrete Superstructure.
11. The modular joint assembly shall be set 1/4" below the top of concrete to allow grinding. The Contractor shall not gouge or nick the joint assembly during grinding operations.



| | | | |
|--------------------------|----------------|-------|-----------|
| USER NAME = has | DESIGNED - ELH | 08/13 | REVISED - |
| ESCA PROJECT NO. 1070.09 | CHECKED - RDP | 08/13 | REVISED - |
| PLOT DATE = 1/28/2014 | DRAWN - DWH | 08/13 | REVISED - |
| 11:17:57 PM | CHECKED - ELH | 08/13 | REVISED - |

**STATE OF ILLINOIS
 DEPARTMENT OF TRANSPORTATION**

**MODULAR EXPANSION JOINT DETAILS
 STRUCTURE NOS. 026-0106 & 026-0107**

SHEET NO. 50 OF 113 SHEETS

| F.A.I. RTE. | SECTION | COUNTY | TOTAL SHEETS | SHEET NO. |
|--------------------|----------------------|---------|--------------|-----------|
| 70 | (26-3B-1, 3B-1(3))BR | FAYETTE | 277 | 130 |
| CONTRACT NO. 74175 | | | | |

ILLINOIS FED. AID PROJECT