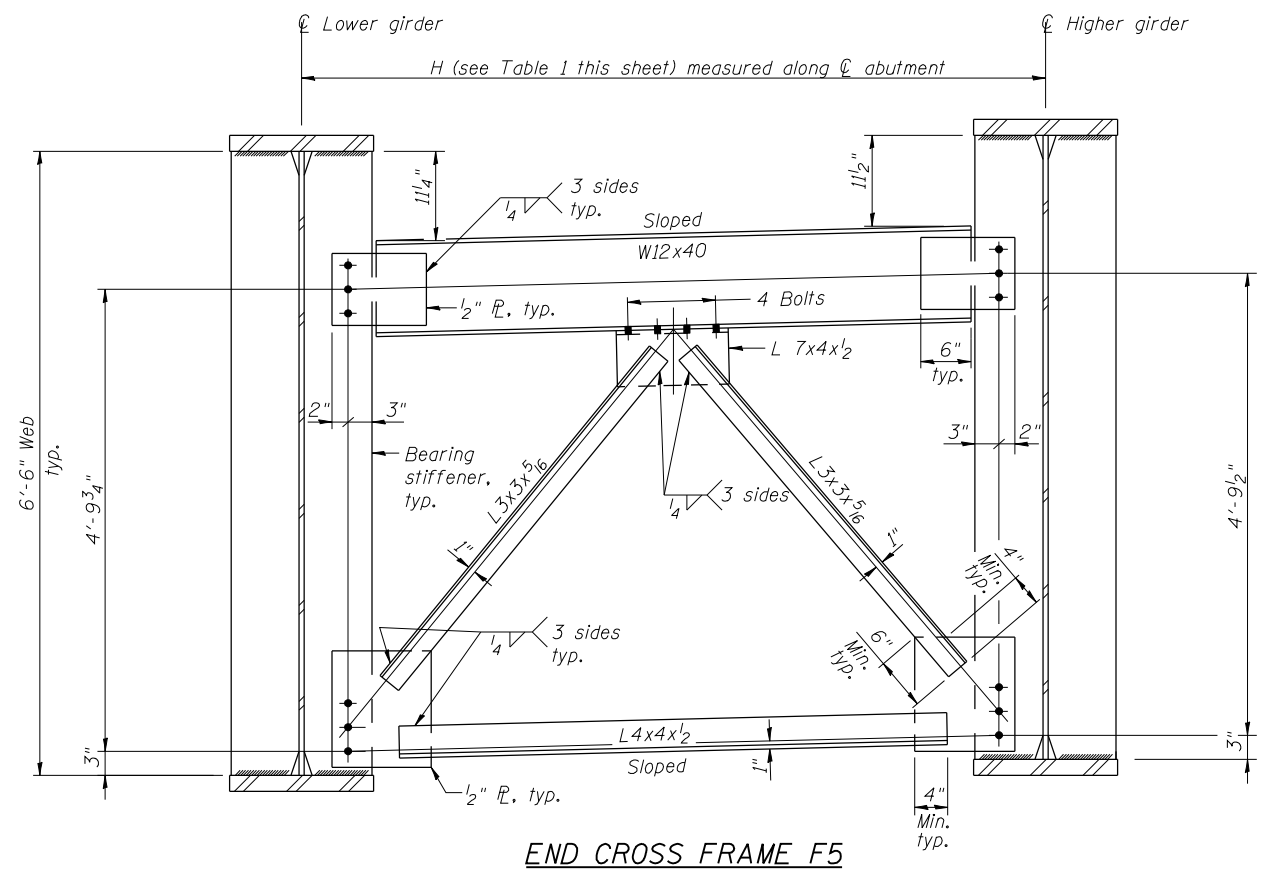


PIER CROSS FRAME F4

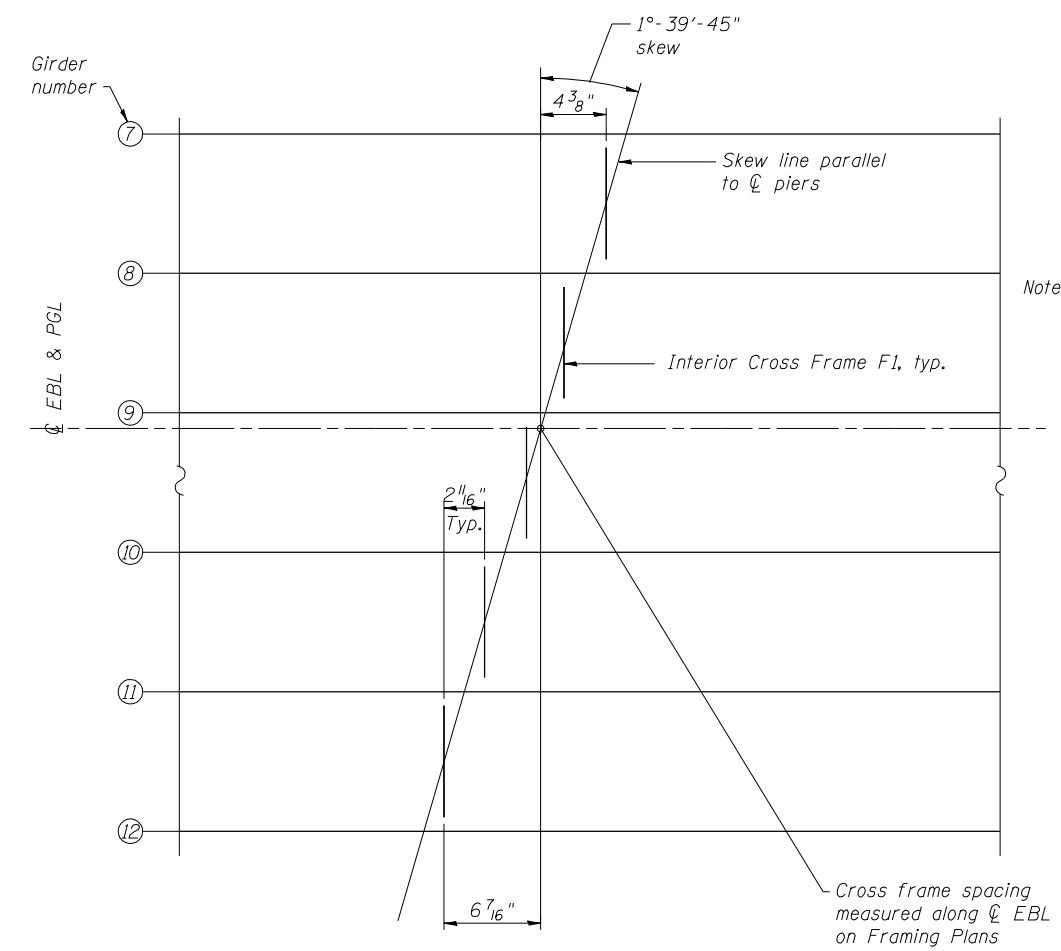


END CROSS FRAME F5

TABLE 1  
DIMENSIONS BETWEEN GIRDERS  
ALONG CENTERLINE PIER

Name	Quantity
Interior Cross Frame F1	460
Pier Cross Frame F2	25
End Cross Frame F3	10
Pier Cross Frame F4	25
End Cross Frame F5	10

SN 026-0107 Location	H feet
West Abutment	7.752
Pier 1	7.750
Pier 2	7.753
Pier 3	7.753
Pier 4	7.753
Pier 5	7.753
East Abutment	7.753



TYPICAL INTERIOR CROSS FRAME PLAN AT SN 026-0107

Note: Interior Cross Frames within the horizontal curve are located radially and are not staggered.



USER NAME = has	DESIGNED - ELH 08/13	REVISED -
ESCA PROJECT NO. 1070.09	CHECKED - RDP 08/13	REVISED -
	DRAWN - DWH 08/13	REVISED -
PLOT DATE = 1/28/2014 1:29:33 PM	CHECKED - ELH 08/13	REVISED -

STATE OF ILLINOIS  
DEPARTMENT OF TRANSPORTATION

STEEL FRAMING DETAILS  
STRUCTURE NOS. 026-0106 & 026-0107

SHEET NO. 65 OF 113 SHEETS

F.A.I. RTE.	SECTION	COUNTY	TOTAL SHEETS	SHEET NO.
70	(26-3B-1, 3B-1(3))BR	FAYETTE	277	145
			CONTRACT NO. 74175	
ILLINOIS FED. AID PROJECT				