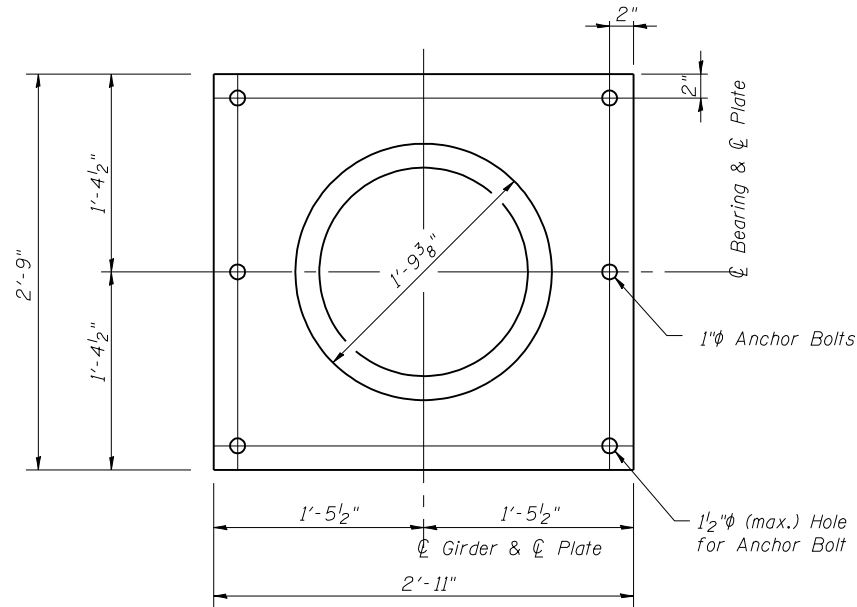
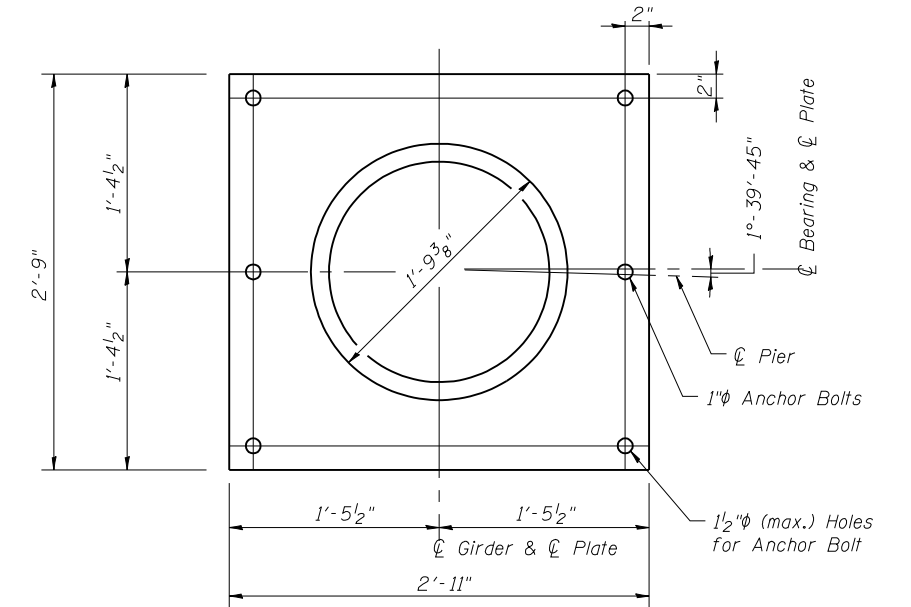


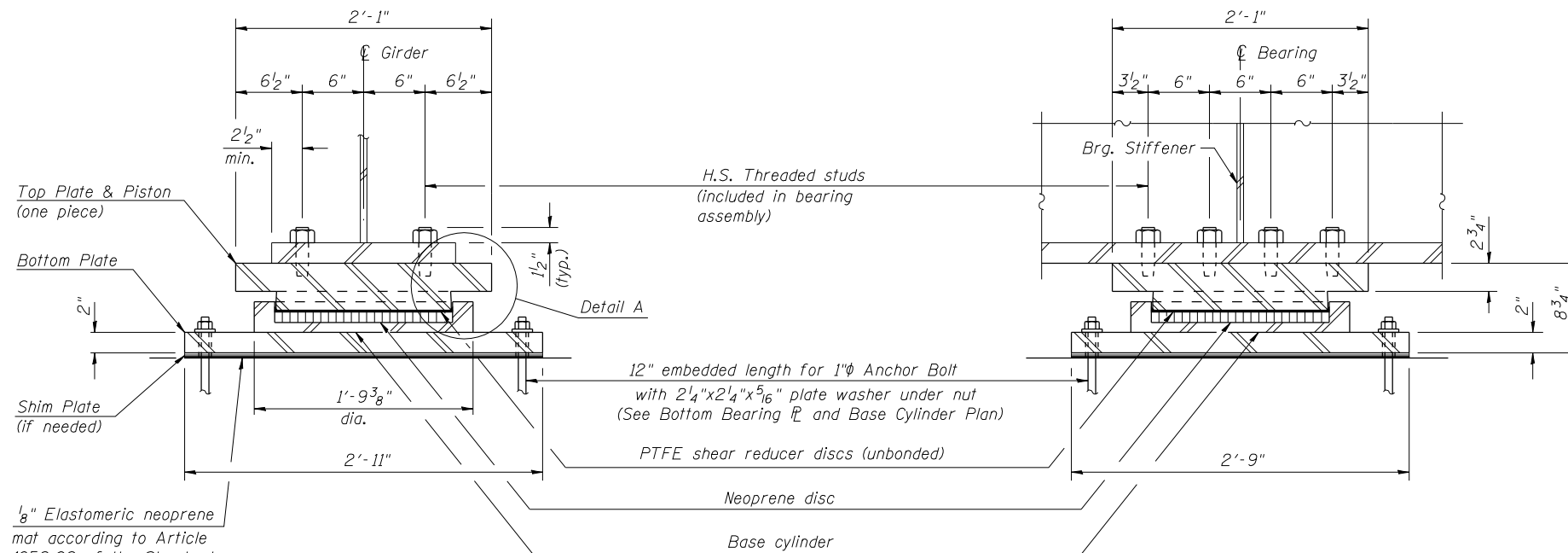
TOP BEARING PLATE AND PISTON PLAN



BOTTOM BEARING PLATE AND BASE CYLINDER PLAN - PIER 3 WB

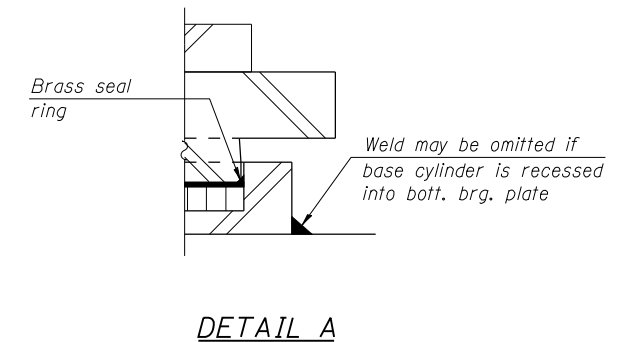


BOTTOM BEARING PLATE AND BASE CYLINDER PLAN - PIER 3 EB



SECTION A-A

SECTION B-B



DETAIL A

BEARING TABLE

Location	No. Req'd.	HLMR Bearing Capacity (kips)	Vertical Design Load (kips)	Lateral Design Load (kips)	**Maximum Factored Ultimate (Strength) Design Rotation (Radians)
Pier 3 WB	6	550	505	101***	0.03
Pier 3 EB	6	550	505	101***	0.03

** Includes rotation allowances for fabrication tolerances (0.005 radians) and installation uncertainties (0.005 radians)

***The Lateral Design Loads are greater than 10% of the Vertical Design Loads. The Fabricator shall modify components of the bearings as required to meet the lateral load demands.

BILL OF MATERIAL

Item	Unit	Total
High Load Multi-Rotational Bearings, Fixed 550k	Each	12
Anchor Bolts, 1"	Each	72

Notes:

The Structural Steel for the top & bottom bearing plates shall be AASHTO M270 Grade 50.

Top & bottom plates, threaded studs, washers & shim plates are included in the cost of the bearings.

Anchor bolts for bearings shall be placed in holes drilled in the concrete through holes in the bottom bearing plate after members are in place.

Drilled and set anchor bolts shall be installed according to Article 521.06 of the Standard Specifications.

Two 1/8" adjusting shims shall be provided for each bearing in addition to all other plates or shims and placed as shown on bearing details.

Anchor bolts shall be ASTM F1554 Grade 36 all-thread of the grade(s) and diameter(s) specified. The corresponding specified grade of AASHTO M314 anchor bolts may be used in lieu of ASTM F1554.

The anchor bolt sizes and grades shown constitute a calculated seismic structural fuse. Substitution of higher diameter and/or grade anchor bolts will not be allowed.

Bearing dimensions and details shown are for pot type HLMR bearings. Disc type HLMR bearing dimensions and details will vary.



USER NAME = has	DESIGNED - RDP	08/13	REVISED -
ESCA PROJECT NO. 1070.09	CHECKED - SHL	08/13	REVISED -
PLOT DATE = 3/18/2014	DRAWN - DWH	08/13	REVISED -
1:27:50 PM	CHECKED - RDP	03/14	REVISED -

**STATE OF ILLINOIS
DEPARTMENT OF TRANSPORTATION**

**FIXED POT BEARING DETAILS
STRUCTURE NOS. 026-0106 & 026-0107**

SHEET NO. 72 OF 113 SHEETS

F.A.I. RTE.	SECTION	COUNTY	TOTAL SHEETS	SHEET NO.
70	(26-3B-1, 3B-1(3))BR	FAYETTE	277	152
			CONTRACT NO. 74175	
ILLINOIS FED. AID PROJECT				