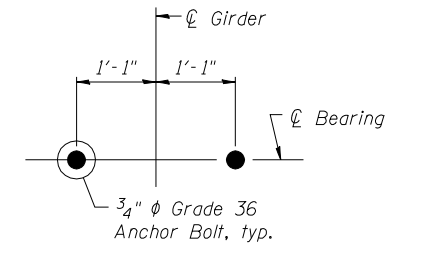
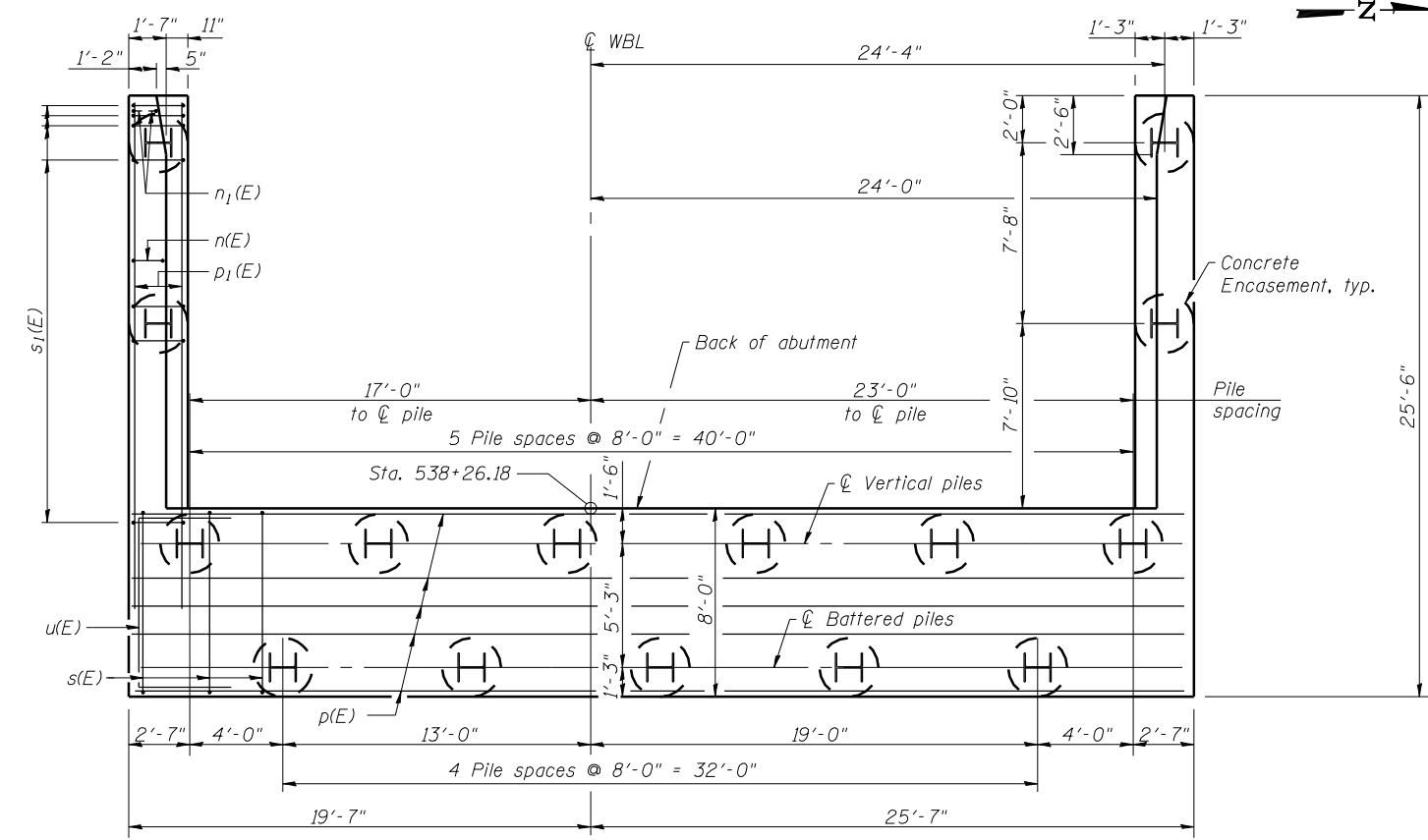
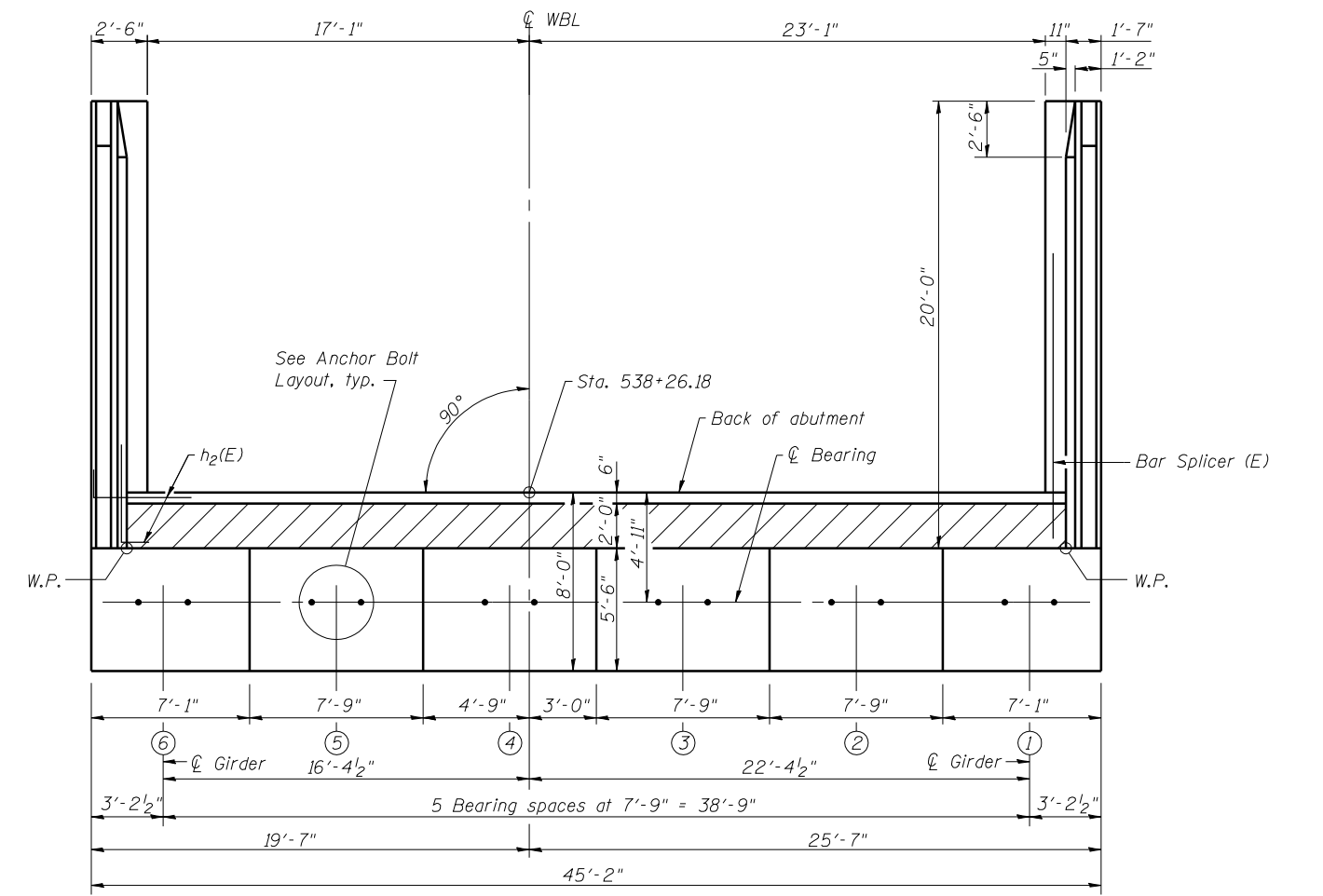


PILE DATA
 Type: HP14x73
 Nominal Required Bearing: 578 kips
 Factored Resistance Available: 318 kips
 Est. Length: 94 feet
 No. Production Piles: 15
 No. Test Piles: 0



**WEST ABUTMENT
 BILL OF MATERIAL**

Bar	No.	Size	Length	Shape
$h(E)$	14	#5	41'-8"	
$h_1(E)$	5	#6	41'-8"	
$h_2(E)$	32	#5	4'-0"	
$h_3(E)$	32	#4	19'-8"	
$h_4(E)$	20	#4	19'-7"	
$h_5(E)$	5	#4	7'-5"	
$n(E)$	36	#6	11'-4"	
$n_1(E)$	12	#6	5'-8"	
$p(E)$	14	#7	44'-10"	
$p_1(E)$	12	#7	22'-0"	
$s(E)$	68	#4	22'-5"	
$s_1(E)$	36	#4	9'-5"	
$s_2(E)$	8	#4	9'-8"	
$u(E)$	8	#6	18'-0"	
$v(E)$	42	#5	3'-9"	
$v_1(E)$	42	#4	3'-4"	
$v_2(E)$	42	#6	11'-3"	
$v_3(E)$	6	#6	10'-10"	
$v_4(E)$	36	#6	11'-5"	
$v_5(E)$	42	#5	8'-10"	
$v_6(E)$	42	#5	7'-8"	
Structure Excavation		Cu. Yd.	240	
Concrete Structures		Cu. Yd.	103.6	
Reinforcement Bars, Epoxy Coated		Pound	8220	
Furnishing Steel Piles HP14x73		Foot	1410	
Driving Piles		Foot	1410	
Concrete Encasement		Cu. Yd.	8.2	
Concrete Sealer		Sq. Ft.	711	
Granular Backfill for Structures		Cu. Yd.	125	
Geocomposite Wall Drain		Sq. Yd.	47	
Pipe Underdrains for Structures 4"		Foot	75	

For details of Bar Splicers, see sheet 107 of 113.
 For details of piles and Concrete Encasement, see sheet 106 of 113.
 The locations of some abutment piles may need to be adjusted in the field. Otherwise, conflicts may occur between the proposed back row of abutment piles and the battered piles in the front row of the existing abutments. The concrete caps at the existing abutments shall be removed and locations of existing piles verified prior to driving any proposed piles. If conflicts exist, the proposed pile locations shall be adjusted and reinforcement stirrups relocated as directed by the Engineer. The maximum pile spacing in the back row of the proposed abutments shall be 8'-9".



USER NAME = has	DESIGNED - RDP	10/13	REVISED -
ESCA PROJECT NO. 1070.09	CHECKED - ELH	10/13	REVISED -
PLOT DATE = 3/19/2014	DRAWN - DWH	10/13	REVISED -
7:12:11 AM	CHECKED - RDP	03/14	REVISED -

**STATE OF ILLINOIS
 DEPARTMENT OF TRANSPORTATION**

**WEST ABUTMENT - WB
 STRUCTURE NO. 026-0106**

SHEET NO. 73 OF 113 SHEETS

F.A.I. RTE.	SECTION	COUNTY	TOTAL SHEETS	SHEET NO.
70	(26-3B-1, 3B-1(3))BR	FAYETTE	277	153
CONTRACT NO. 74175			ILLINOIS FED. AID PROJECT	