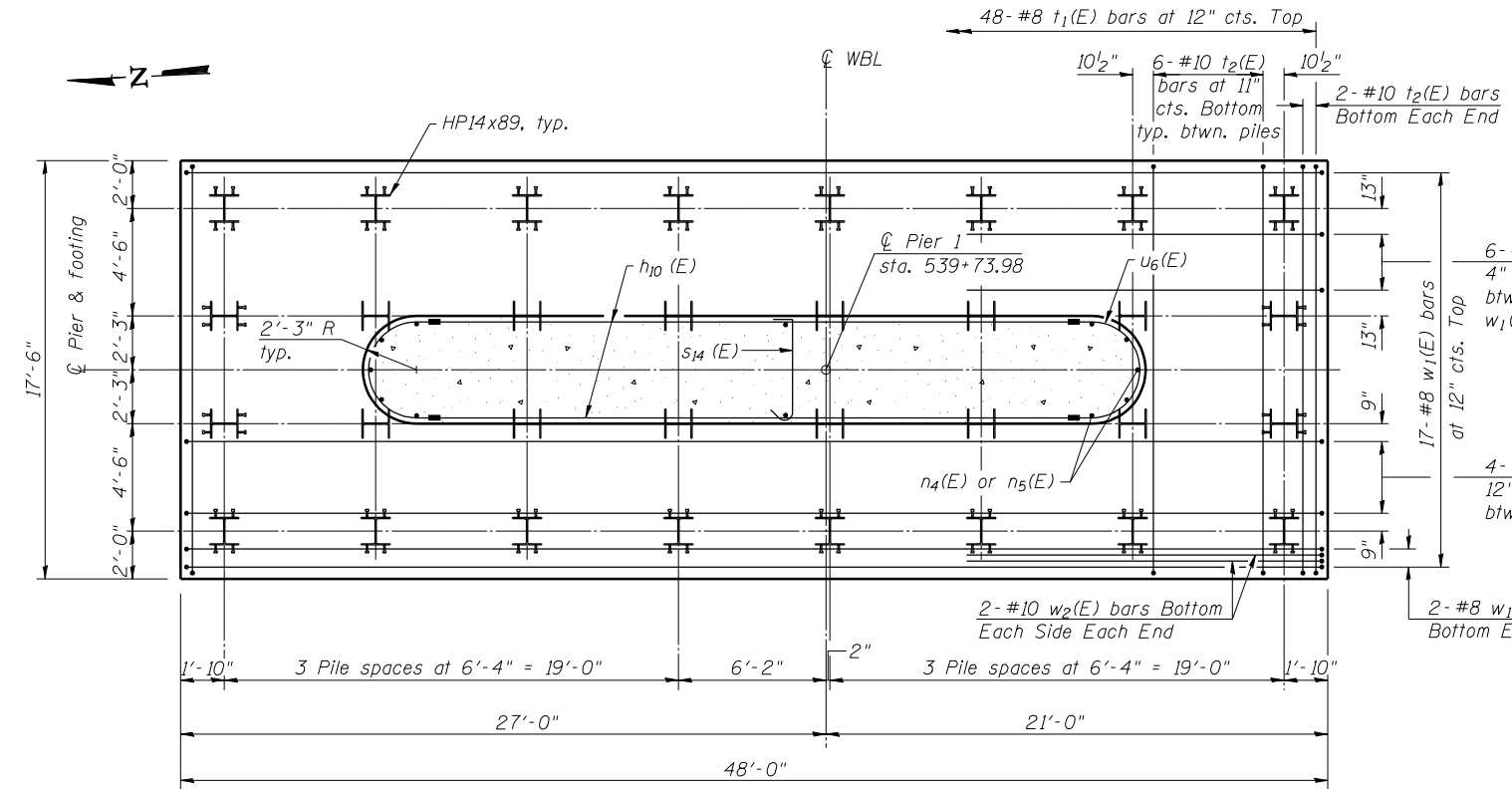
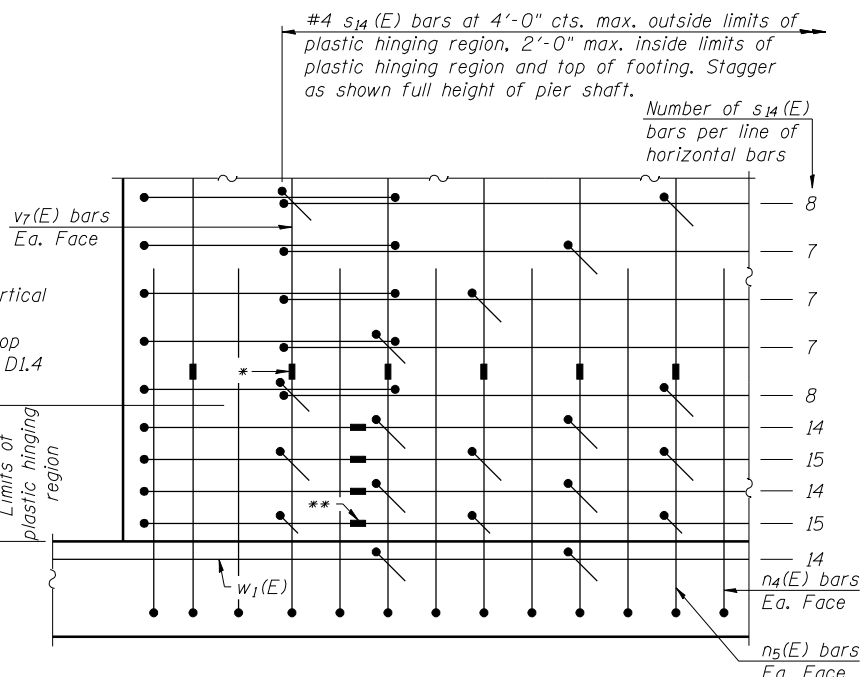


TOP OF PIER



FOOTING PLAN

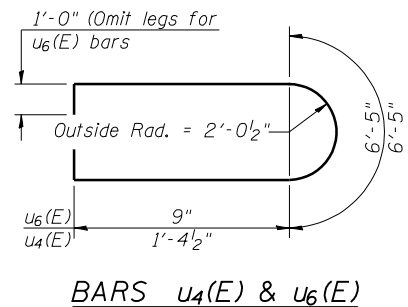


PARTIAL ELEVATION

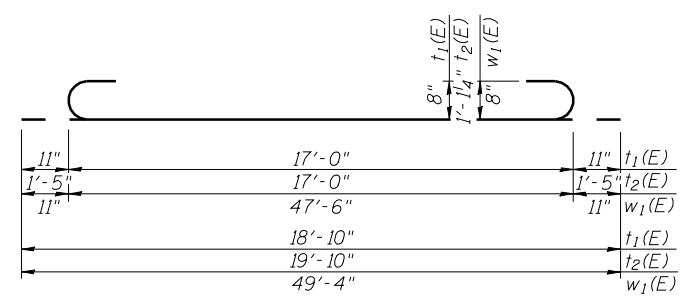
Note:  
Not all lines of horizontal reinforcement bars are shown. Total number of s<sub>14</sub>(E) bars in Bill of Materials is based on applying the pattern shown to the actual pier dimensions and horizontal reinforcement spacing.

PIER 1  
BILL OF MATERIAL

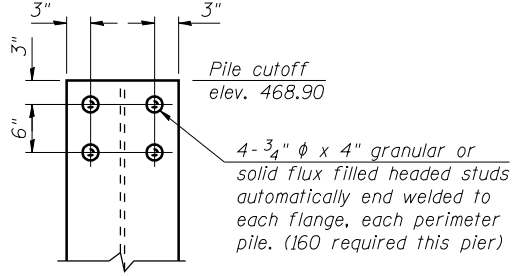
Bar	No.	Size	Length	Shape	
h <sub>10</sub> (E)	28	#5	26'-9"	—	
h <sub>11</sub> (E)	32	#6	30'-6"	—	
h <sub>12</sub> (E)	40	#5	11'-3"	—	
h <sub>13</sub> (E)	40	#5	11'-2"	—	
h <sub>14</sub> (E)	20	#5	30'-0"	—	
h <sub>15</sub> (E)	7	#5	7'-5"	—	
n <sub>4</sub> (E)	66	#6	13'-4"	—	
n <sub>5</sub> (E)	66	#8	9'-7"	—	
p <sub>3</sub> (E)	7	#9	49'-5"	—	
p <sub>4</sub> (E)	12	#10	20'-6"	—	
p <sub>5</sub> (E)	10	#7	9'-9"	—	
p <sub>6</sub> (E)	2	#7	33'-2"	—	
s <sub>3</sub> (E)	4	#5	14'-7"	□	
s <sub>4</sub> (E)	4	#5	15'-0"	□	
s <sub>5</sub> (E)	4	#5	15'-5"	□	
s <sub>6</sub> (E)	4	#5	15'-10"	□	
s <sub>7</sub> (E)	4	#5	16'-3"	□	
s <sub>8</sub> (E)	4	#5	16'-9"	□	
s <sub>9</sub> (E)	4	#5	17'-2"	□	
s <sub>10</sub> (E)	4	#5	17'-7"	□	
s <sub>11</sub> (E)	96	#5	13'-0"	□	
s <sub>12</sub> (E)	70	#5	14'-2"	□	
s <sub>13</sub> (E)	11	#5	7'-6"	□	
s <sub>14</sub> (E)	333	#4	5'-3"	□	
t <sub>1</sub> (E)	48	#8	18'-10"	—	
t <sub>2</sub> (E)	46	#10	19'-10"	—	
u <sub>4</sub> (E)	32	#6	11'-2"	—	
u <sub>5</sub> (E)	10	#6	11'-10"	—	
u <sub>6</sub> (E)	28	#5	7'-11"	—	
v <sub>7</sub> (E)	66	#8	9'-6"	—	
w <sub>1</sub> (E)	33	#8	49'-4"	—	
w <sub>2</sub> (E)	44	#10	19'-10"	—	
Structure Excavation				Cu. Yd.	210
Concrete Structures				Cu. Yd.	216.8
Reinforcement Bars, Epoxy Coated				Pound	30630
Furnishing Steel Piles HPI4x89				Foot	2624
Driving Piles				Foot	2624



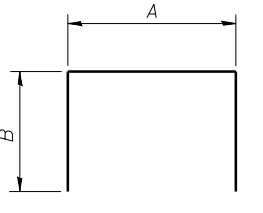
**PILE DATA**  
Type: HPI4x89  
Nominal Required Bearing: 705 kips  
Factored Resistance Available: 388 kips  
Est. Length: 82 feet  
No. Production Piles: 32  
No. Test Piles: 0



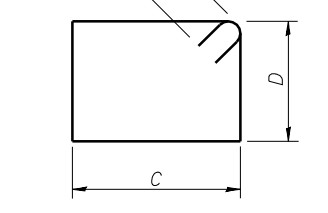
TOP OF PERIMETER PILE DETAIL



PILE CUTOFF



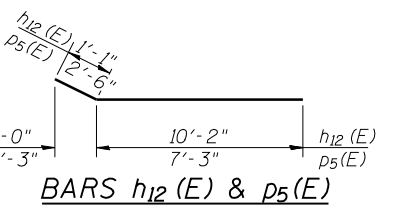
A & B DIMENSIONS



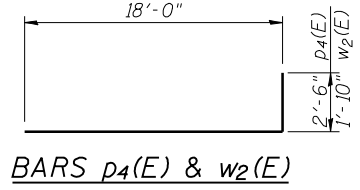
C & D DIMENSIONS

Bar	A	B
h <sub>11</sub> (E)	28'-6"	1'-0"
p <sub>3</sub> (E)	46'-3"	1'-7"
s <sub>11</sub> (E)	4'-0"	4'-6"
s <sub>12</sub> (E)	5'-2"	4'-6"
s <sub>13</sub> (E)	5'-2"	1'-2"
u <sub>5</sub> (E)	5'-0"	3'-5"

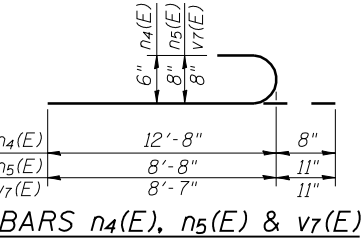
Bar	C	D
s <sub>3</sub> (E)	4'-0"	2'-10"
s <sub>4</sub> (E)	4'-0"	3'-0 1/2"
s <sub>5</sub> (E)	4'-0"	3'-3"
s <sub>6</sub> (E)	4'-0"	3'-5 1/2"
s <sub>7</sub> (E)	4'-0"	3'-8"
s <sub>8</sub> (E)	4'-0"	3'-11"
s <sub>9</sub> (E)	4'-0"	4'-1 1/2"
s <sub>10</sub> (E)	4'-0"	4'-4"



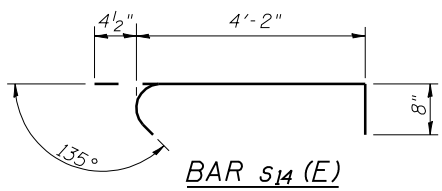
BARS h<sub>12</sub>(E) & p<sub>5</sub>(E)



BARS p<sub>4</sub>(E) & w<sub>2</sub>(E)



BARS n<sub>4</sub>(E), n<sub>5</sub>(E) & v<sub>7</sub>(E)



BAR s<sub>14</sub>(E)



USER NAME = has	DESIGNED - RDP	08/13	REVISED -
ESCA PROJECT NO. 1070.09	CHECKED - MTD	08/13	REVISED -
PLOT DATE = 1/28/2014	DRAWN - DWH/JPC	08/13	REVISED -
2:17:59 PM	CHECKED - ELH	01/14	REVISED -

STATE OF ILLINOIS  
DEPARTMENT OF TRANSPORTATION

PIER 1 - WB  
STRUCTURE NO. 026-0106

SHEET NO. 86 OF 113 SHEETS

F.A.I. RTE.	SECTION	COUNTY	TOTAL SHEETS	SHEET NO.
70	(26-3B-1, 3B-1(3))BR	FAYETTE	277	166
CONTRACT NO. 74175			ILLINOIS FED. AID PROJECT	