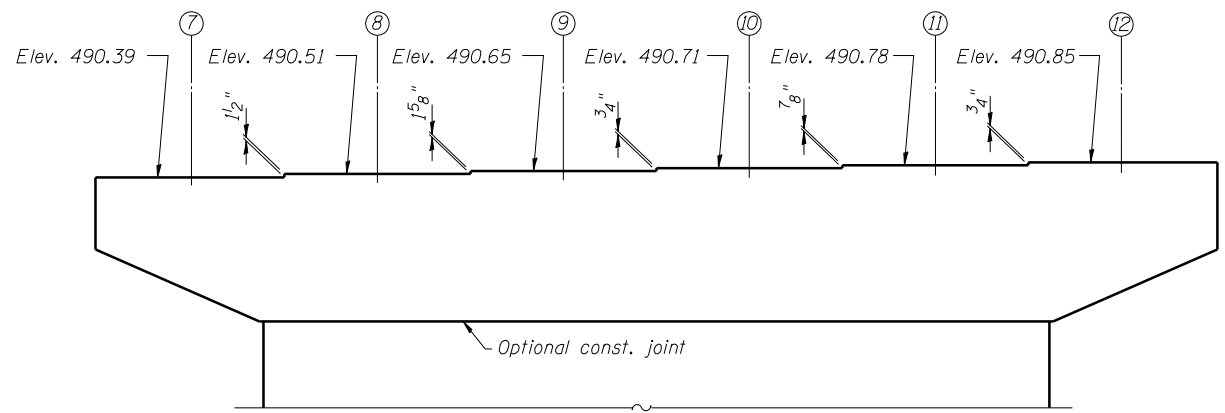
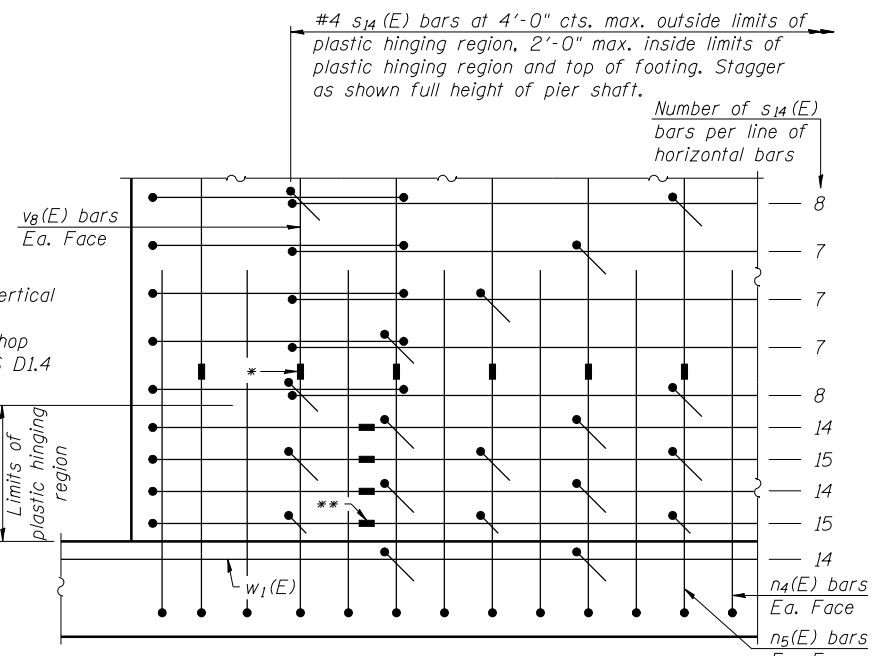


**PIER 2
BILL OF MATERIAL**

Bar	No.	Size	Length	Shape
h ₁₀ (E)	28	#5	26'-9"	—
h ₁₁ (E)	40	#6	30'-6"	—
h ₁₂ (E)	40	#5	11'-3"	—
h ₁₃ (E)	40	#5	11'-2"	—
h ₁₄ (E)	20	#5	30'-0"	—
h ₁₈ (E)	7	#5	23'-0"	—
n ₄ (E)	66	#6	13'-4"	—
n ₅ (E)	66	#8	9'-7"	—
p ₃ (E)	7	#9	49'-5"	—
p ₄ (E)	12	#10	20'-6"	—
p ₅ (E)	10	#7	9'-9"	—
p ₆ (E)	2	#7	33'-2"	—
s ₃ (E)	4	#5	14'-7"	□
s ₄ (E)	4	#5	15'-0"	□
s ₅ (E)	4	#5	15'-5"	□
s ₆ (E)	4	#5	15'-10"	□
s ₇ (E)	4	#5	16'-3"	□
s ₈ (E)	4	#5	16'-9"	□
s ₉ (E)	4	#5	17'-2"	□
s ₁₀ (E)	4	#5	17'-7"	□
s ₁₁ (E)	96	#5	13'-0"	□
s ₁₂ (E)	70	#5	14'-2"	□
s ₁₃ (E)	32	#5	7'-6"	□
s ₁₄ (E)	362	#4	5'-3"	□
t ₁ (E)	48	#8	18'-10"	—
t ₂ (E)	46	#10	19'-10"	—
u ₄ (E)	40	#6	11'-2"	—
u ₅ (E)	10	#6	11'-10"	—
u ₆ (E)	28	#5	7'-11"	—
v ₈ (E)	66	#8	10'-11"	—
w ₁ (E)	33	#8	49'-4"	—
w ₂ (E)	44	#10	19'-10"	—
Structure Excavation		Cu. Yd.	260	
Concrete Structures		Cu. Yd.	225.6	
Reinforcement Bars, Epoxy Coated		Pound	31760	
Furnishing Steel Piles HP14x89		Foot	2624	
Driving Piles		Foot	2624	

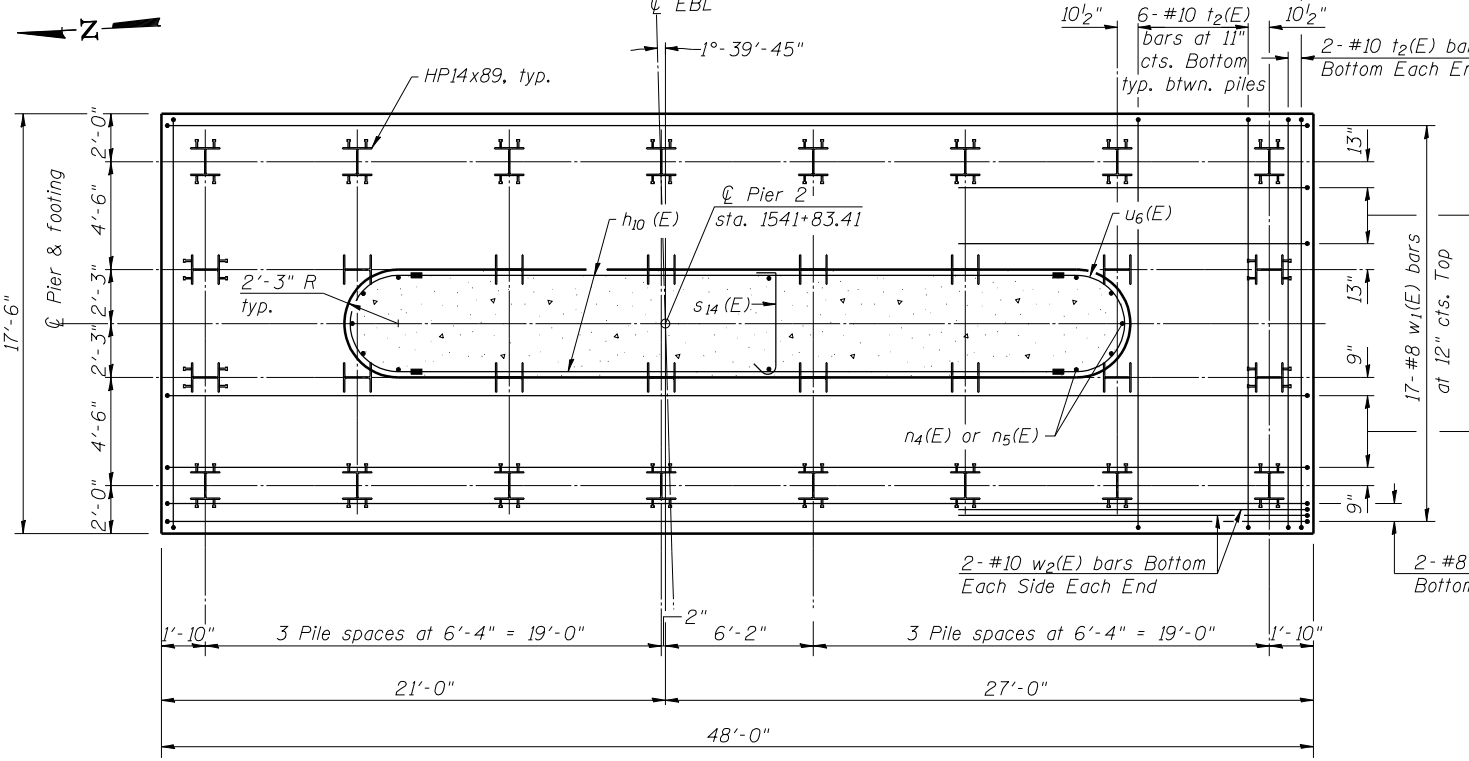


TOP OF PIER

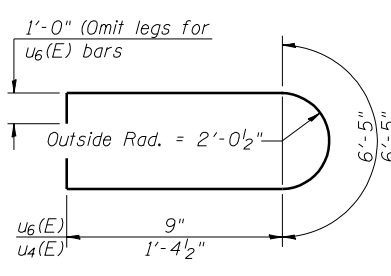


PARTIAL ELEVATION
(Showing s₁₄(E) bar pattern)

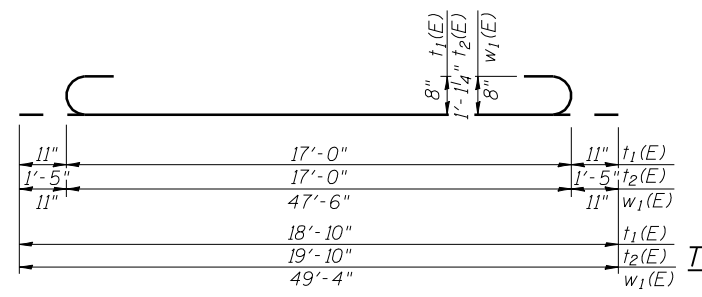
Note:
Not all lines of horizontal reinforcement bars are shown. Total number of s₁₄(E) bars in Bill of Materials is based on applying the pattern shown to the actual pier dimensions and horizontal reinforcement spacing.



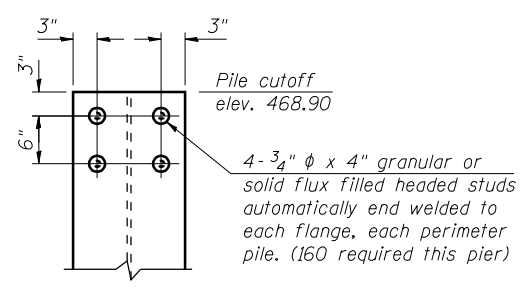
FOOTING PLAN



BARS u₄(E) & u₆(E)

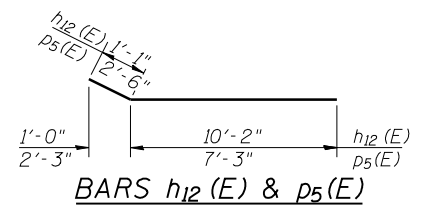


BARS t₁(E), t₂(E) & w₁(E)

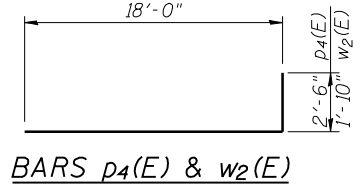


TOP OF PERIMETER PILE DETAIL

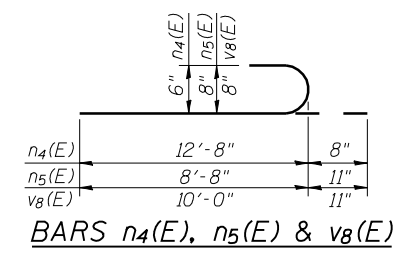
PILE DATA
Type: HP14x89
Nominal Required Bearing: 705 kips
Factored Resistance Available: 388 kips
Est. Length: 82 feet
No. Production Piles: 32
No. Test Piles: 0



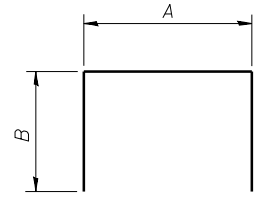
BARS h₁₂(E) & p₅(E)



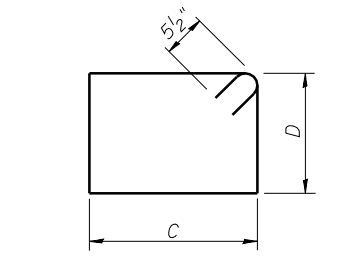
BARS p₄(E) & w₂(E)



BARS n₄(E), n₅(E) & v₈(E)



BARS



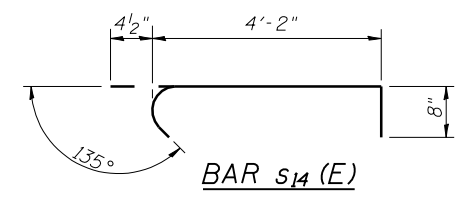
BARS s₃(E) thru s₁₀(E)

A & B DIMENSIONS

Bar	A	B
h ₁₁ (E)	28'-6"	1'-0"
p ₃ (E)	46'-3"	1'-7"
s ₁₁ (E)	4'-0"	4'-6"
s ₁₂ (E)	5'-2"	4'-6"
s ₁₃ (E)	5'-2"	1'-2"
u ₅ (E)	5'-0"	3'-5"

C & D DIMENSIONS

Bar	C	D
s ₃ (E)	4'-0"	2'-10"
s ₄ (E)	4'-0"	3'-0 ¹ / ₂ "
s ₅ (E)	4'-0"	3'-3"
s ₆ (E)	4'-0"	3'-5 ¹ / ₂ "
s ₇ (E)	4'-0"	3'-8"
s ₈ (E)	4'-0"	3'-11"
s ₉ (E)	4'-0"	4'-1 ¹ / ₂ "
s ₁₀ (E)	4'-0"	4'-4"



BAR s₁₄(E)



USER NAME = has	DESIGNED - RDP	08/13	REVISED -
ESCA PROJECT NO. 1070.09	CHECKED - MTD	08/13	REVISED -
PLOT DATE = 1/28/2014	DRAWN - DWH	08/13	REVISED -
3:02:03 PM	CHECKED - ELH	01/14	REVISED -

**STATE OF ILLINOIS
DEPARTMENT OF TRANSPORTATION**

**PIER 2 - EB
STRUCTURE NO. 026-0107**

SHEET NO. 98 OF 113 SHEETS

F.A.I. RTE.	SECTION	COUNTY	TOTAL SHEETS	SHEET NO.
70	(26-3B-1, 3B-1(3))BR	FAYETTE	277	178
CONTRACT NO. 74175			ILLINOIS FED. AID PROJECT	