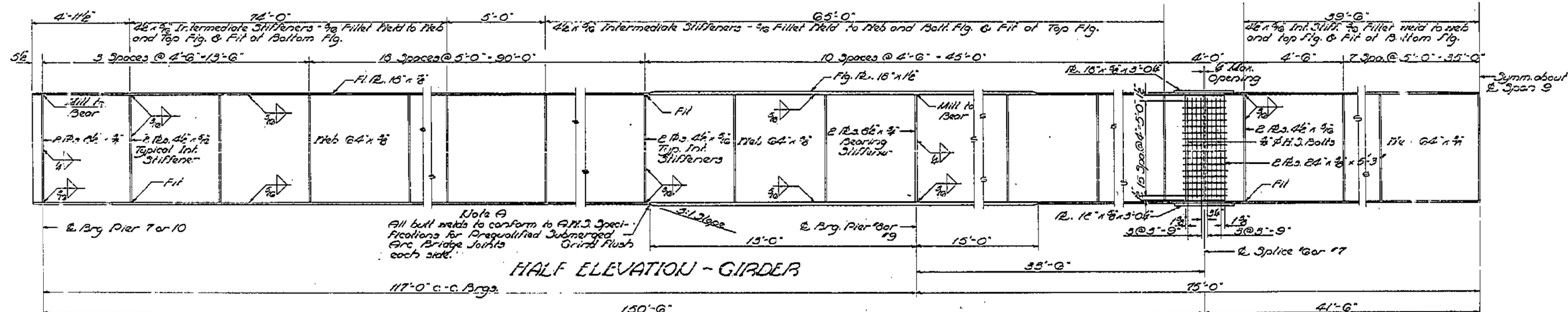


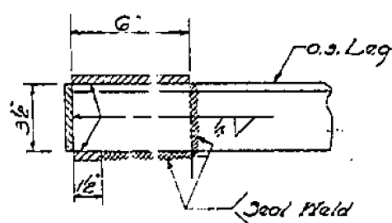
HALF PLAN - STRUCTURAL STEEL - GIRDER SPANS

Note: For Details B thru J See Sheet #8.

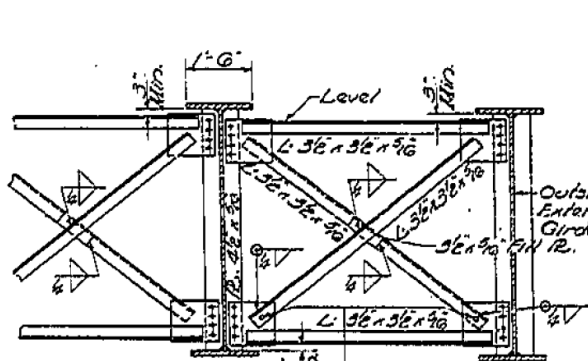


HALF ELEVATION - GIRDER

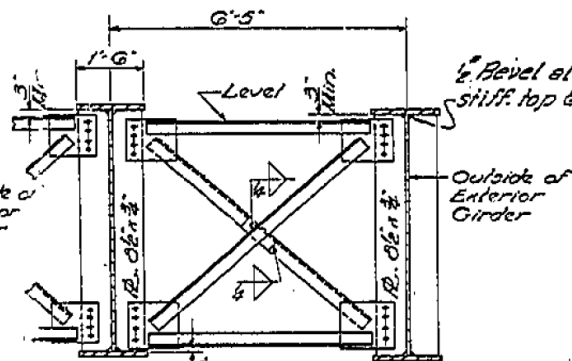
Note A  
All butt welds to conform to A.M.S. Specifications for Prequalified Submerged Arc Bridge Joints each side.



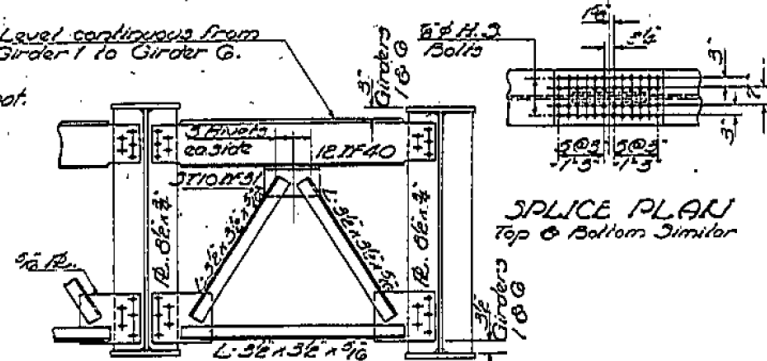
MINIMUM ANGLE TO GUSSET PLATE WELD



SECTION A-A  
Shows Typical Intermediate Cross Frame F



SECTION B-B  
Shows Typical Cross Frame F1 at Piers 8 & 9. For Size of members see Sec. A-A.



SECTION C-C  
Shows Typical Cross Frames F2 at Piers 7 & 10

SPLICE PLAN  
Top & Bottom Similar

ELEVATIONS TOP OF GIRDER			
Location	2nd 16' @ Girder 26	3rd 16' @ Girder 26	4th 16' @ Girder 26
E. Brg. Pier 7	49728	49741	49748
E. Brg. Pier 8	49733	49748	49753
E. Splice 16	49728	49741	49748
E. Splice #7	49725	49738	49745
E. Brg. Pier 9	49727	49740	49747
E. Brg. Pier 10	49712	49725	49732

STRUCTURAL STEEL  
F.A.I.R.T. 70 - SEC. 26-3B-1(2)  
FAYETTE COUNTY  
STA. 544 + 27

DESIGNED R. X. Taylor  
CHECKED M. C. Jacobs  
DRAWN M. C. Jacobs  
CHECKED M. C. Jacobs

EXAMINED W. E. Baumgardner  
DATE JUN 6 1963  
APPROVED W. E. Baumgardner

- Exterior Cross Frames Only  
3/8" bolts to be removed or 1/2" F is in place. Field weld. After slab & curb are poured, but before parapet is poured.



USER NAME = has  
ESCA PROJECT NO. 1000.05  
PLOT SCALE = 0.1667 / IN.  
PLOT DATE = 1/29/2014 2:07:44 PM

DESIGNED - ELH  
DRAWN - HAS  
CHECKED - RDP  
DATE - 08/13

STATE OF ILLINOIS  
DEPARTMENT OF TRANSPORTATION

STRUCTURE NO. 026-0018 EXISTING BRIDGE PLANS  
WB - FOR INFORMATION ONLY

SCALE: SHEET NO. 7 OF 28 SHEETS STA. TO STA.

F.A.I.R.T.	SECTION	COUNTY	TOTAL SHEETS	SHEET NO.
70	(26-3B-1, 3B-1(3))BR	FAYETTE	277	200
CONTRACT NO. 74175			FED. ROAD DIST. NO. ILLINOIS FED. AID PROJECT	