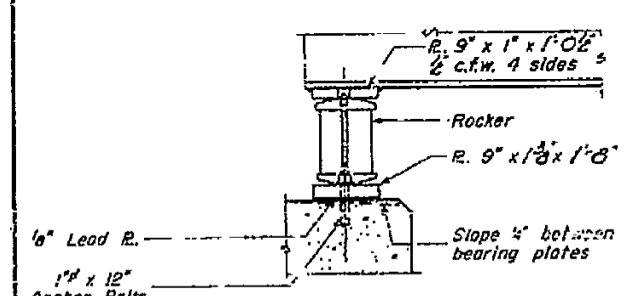
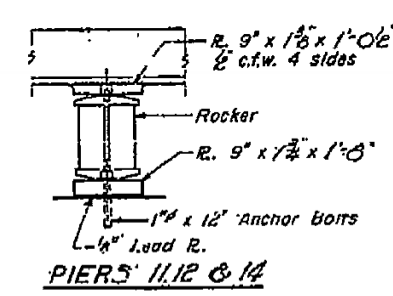


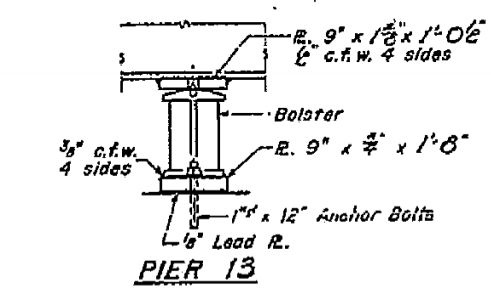
**FRAMING PLAN**  
All Beams 33 LF 116



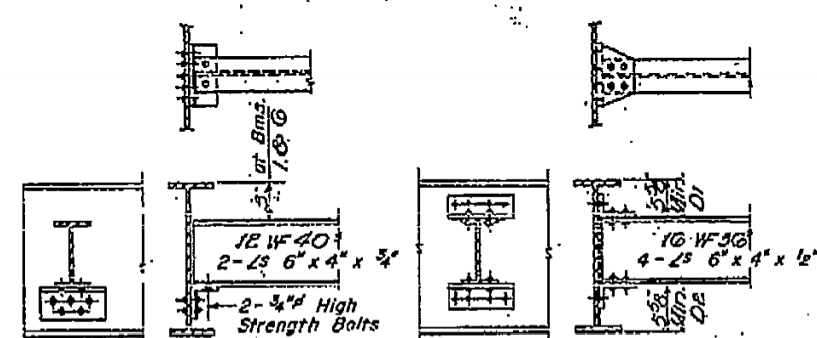
**SECTION AT ABUTMENT & PIER 10**



**PIERS 11, 12 & 14**



**PIER 13**

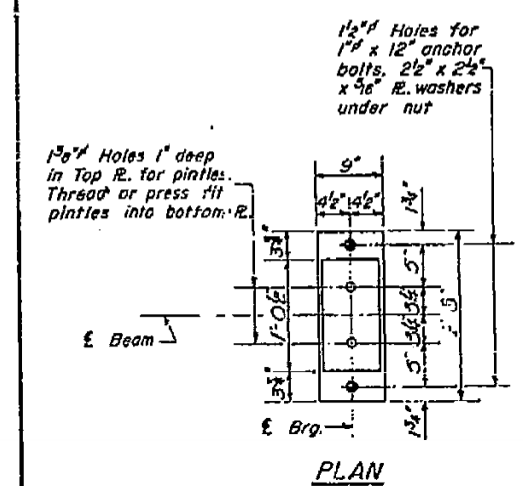


**DIAPHRAGM D**  
170 Required

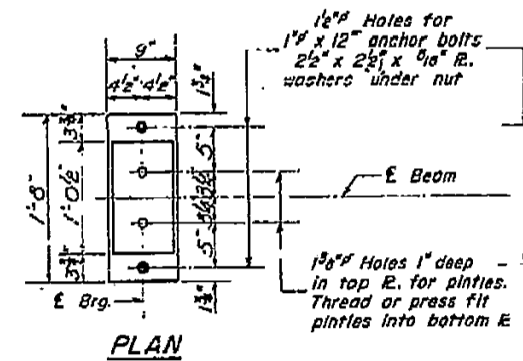
**DIAPHRAGM D1 & D2**  
Required 65-D1, 20-D2

**ELEVATION TOP OF WF**

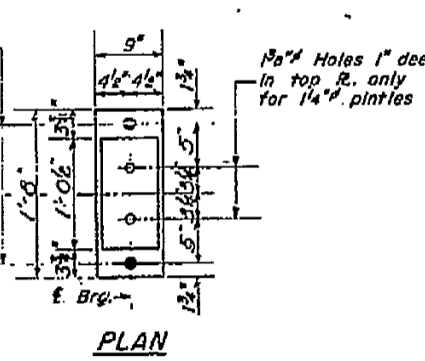
Location	2ms.100	3ms.200	3ms.364
E. Brg. Pier 10	497.12	497.25	497.32
E. Pier 11	496.96	497.09	497.16
E. Splice 8	496.92	497.05	497.12
E. Pier 12	496.88	496.95	497.02
E. Splice 9	496.79	496.92	496.99
E. Pier 13	496.66	496.79	496.86
E. Splice 10	496.63	496.76	496.83
E. Pier 14	496.50	496.63	496.70
E. Splice 11	496.46	496.59	496.66
E. Brg. E. Abut.	496.43	496.56	496.63



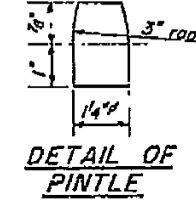
**PLAN**



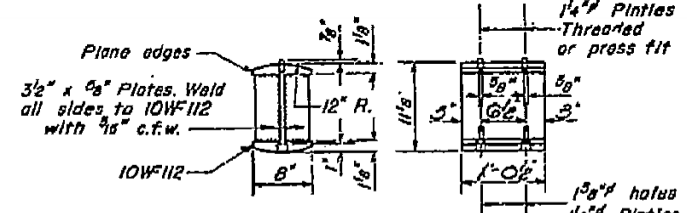
**PLAN**



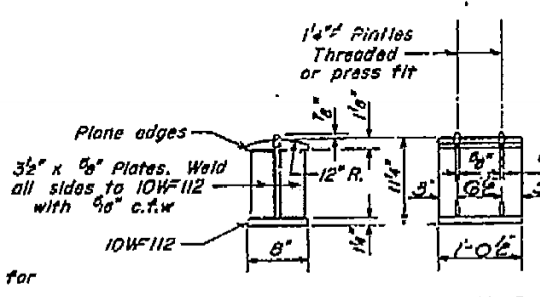
**PLAN**



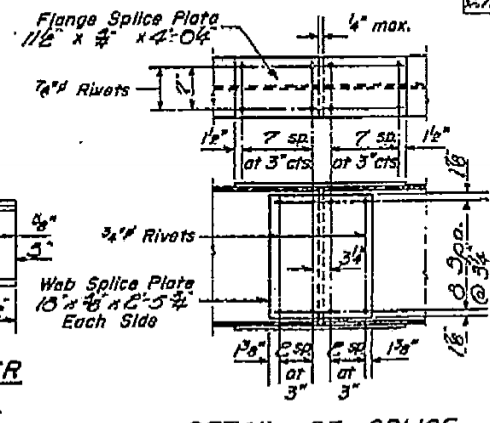
**DETAIL OF PINTLE**



**DETAIL OF ROCKER AT PIERS 10, 11, 12, 14 & EAST ABUT.**



**DETAIL OF BOLSTER AT PIER 13**



**DETAIL OF SPLICE**

DESIGNED: R.V. Taylor  
CHECKED: G.H. Higgins  
DRAWN: W.A. Goldsman Jr.  
APPROVED: H.G. Bluff

JUNE 6 1963



DESIGNED - ELH	REVISIONS -
DRAWN - HAS	REVISIONS -
CHECKED - RDP	REVISIONS -
DATE - 08/13	REVISIONS -

STATE OF ILLINOIS  
DEPARTMENT OF TRANSPORTATION

STRUCTURE NO. 026-0018 EXISTING BRIDGE PLANS  
WB - FOR INFORMATION ONLY

SCALE: SHEET NO. 11 OF 28 SHEETS STA. TO STA.

**STRUCTURAL STEEL BEAM SPANS 11, 12, 13, 14 & 15**  
E.A. 107.70 - SEC. 26-3B-1(2)  
FAYETTE COUNTY  
STA. 544 + 27

F.A.I. RTE.	SECTION	COUNTY	TOTAL SHEETS	SHEET NO.
70	(26-3B-1, 3B-13)BR	FAYETTE	277	204
CONTRACT NO. 74175			FED. ROAD DIST. NO. ILLINOIS FED. AID PROJECT	