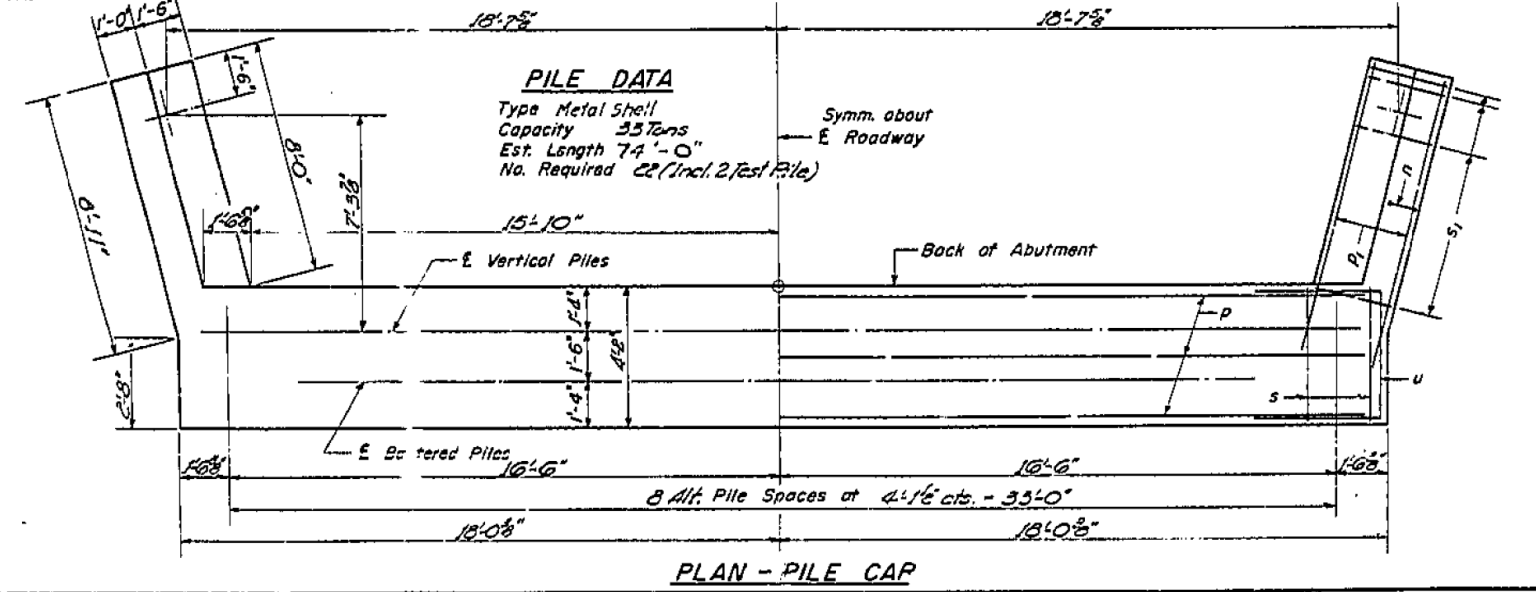
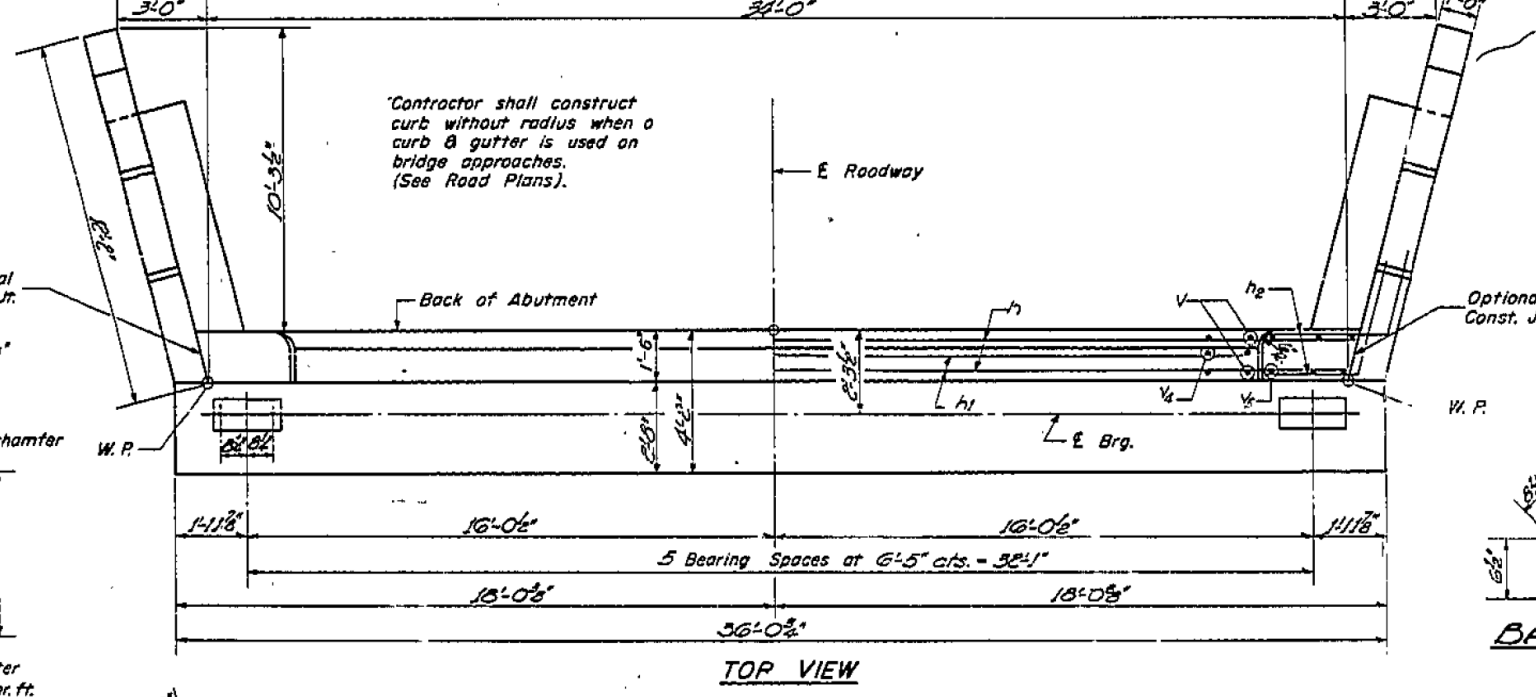
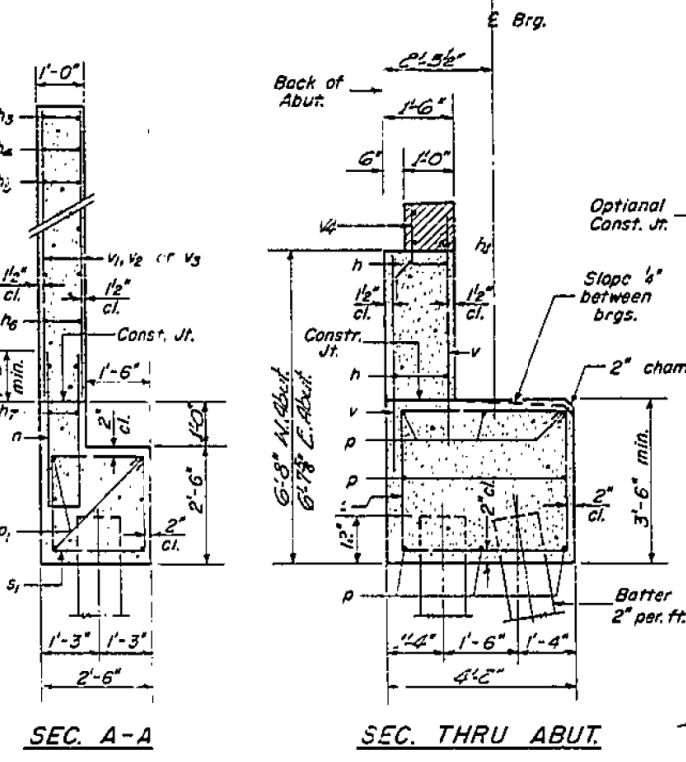
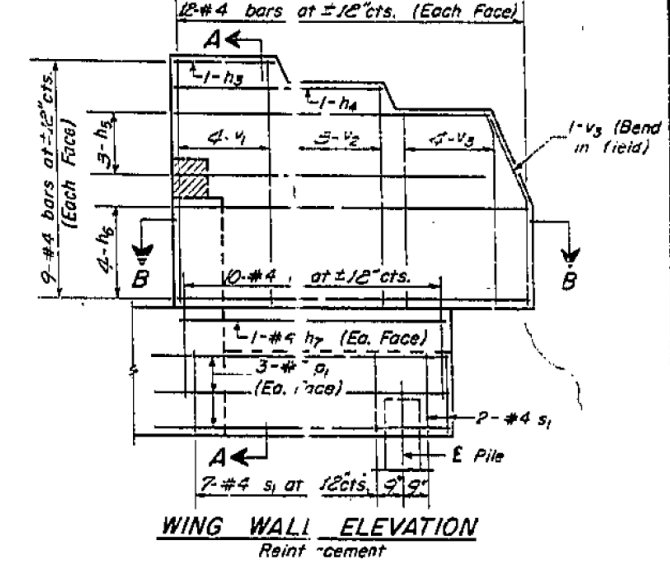
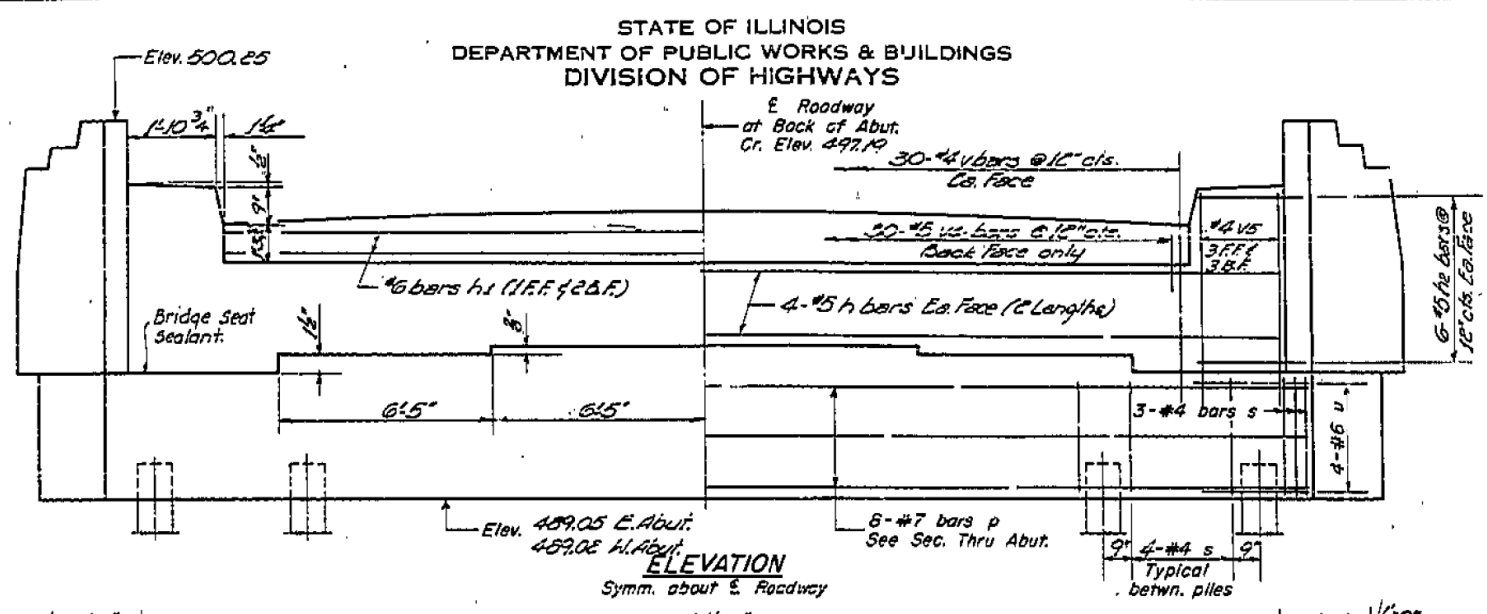
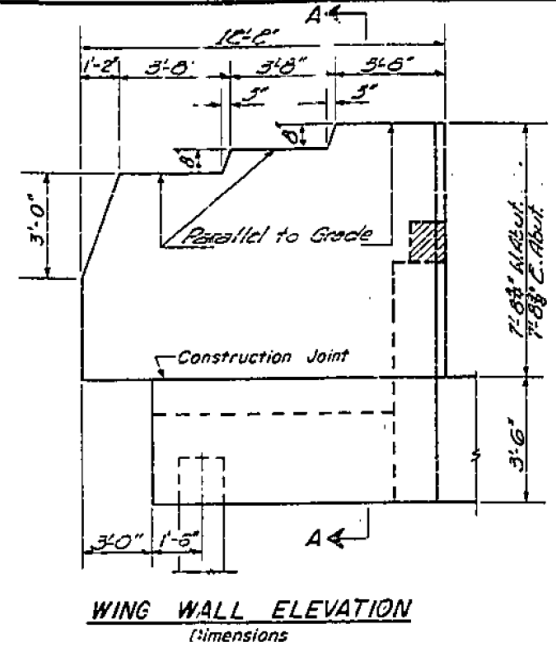


STATE OF ILLINOIS  
DEPARTMENT OF PUBLIC WORKS & BUILDINGS  
DIVISION OF HIGHWAYS

PROJECT NO.	SECTION	COUNTY	TOTAL SHEETS	SHEET NO.
F.A.I. 70	26-3B-1(2)	FAYETTE	36	17
TOTAL SHEETS OUT OF 36		SHEET NO. 17		
TOTAL SHEETS		30 SHEETS		



**PILE DATA**  
Type Metal Shell  
Capacity 35 Tons  
Est. Length 74'-0"  
No. Required 22 (Incl. 2 Test Pile)

**E & W. ABUTMENT  
BILL OF MATERIAL**

Bar No.	Size	Length	Shape
h1	#2	17'-9"	—
h2	#6	29'-9"	—
h3	#5	5'-0"	L
h4	#4	3'-1"	—
h5	#4	6'-9"	—
h6	#4	10'-5"	—
h7	#4	8'-8"	—
n	#4	7'-9"	U
p	#7	35'-9"	—
p1	#7	10'-3"	—
s	#4	12'-9"	□
s1	#4	9'-5"	□
u	#6	10'-9"	□
v	#4	4'-0"	—
v1	#2	1'-0"	—
v2	#4	10'-2"	—
v3	#4	9'-8"	—
v4	#5	2'-7"	—
v5	#4	6'-3"	—
Class X Concrete		Cu. Yds.	67.2
Reinforcement Bars		Lbs.	5980
Metal Shell Piles 12"		Lin. Ft.	1480
Test Piles (Metal Shell)		Eq.	2

**E. & W. ABUTMENTS  
F.A.I. RT. 70 SEC. 26-3B-1(2)  
FAYETTE COUNTY  
STA. 544+27**

DESIGNED R.X. Taylor  
CHECKED P.H. Johnson  
DRAWN W.A. Sousamon Jr.  
APPROVED U.S. Haff

JUNE 6 1963

A-3 7-18-62 Rev. 11-27-62



USER NAME = has	DESIGNED - ELH	REVISED -
ESCA PROJECT NO. 1000.05	DRAWN - HAS	REVISED -
PLOT SCALE = 0.1667 / IN.	CHECKED - RDP	REVISED -
PLOT DATE = 1/29/2014 2:08:33 PM	DATE - 08/13	REVISED -

STATE OF ILLINOIS  
DEPARTMENT OF TRANSPORTATION

STRUCTURE NO. 026-0018 EXISTING BRIDGE PLANS  
WB - FOR INFORMATION ONLY

SCALE: SHEET NO. 12 OF 28 SHEETS STA. TO STA.

F.A.I. RT.	SECTION	COUNTY	TOTAL SHEETS	SHEET NO.
70	(26-3B-1, 3B-1(3))BR	FAYETTE	277	205
FED. ROAD DIST. NO.		ILLINOIS FED. AID PROJECT		
		CONTRACT NO. 74175		