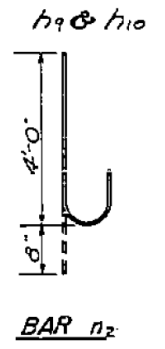
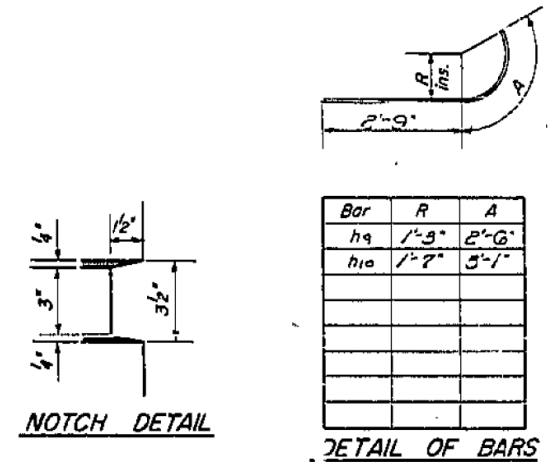
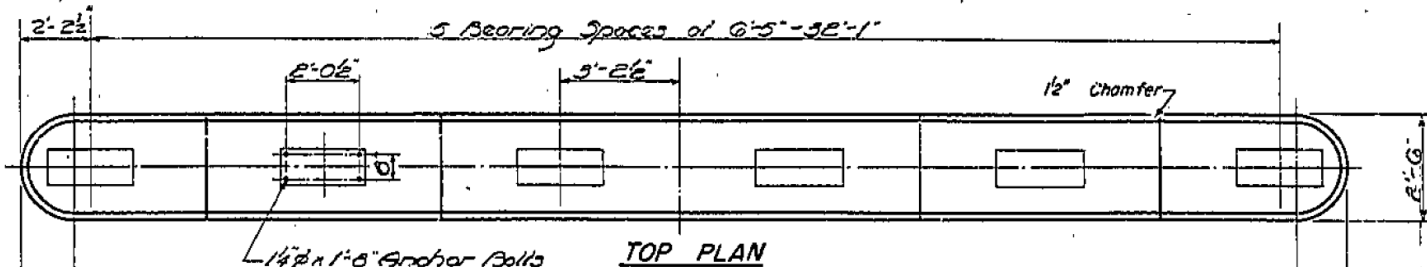
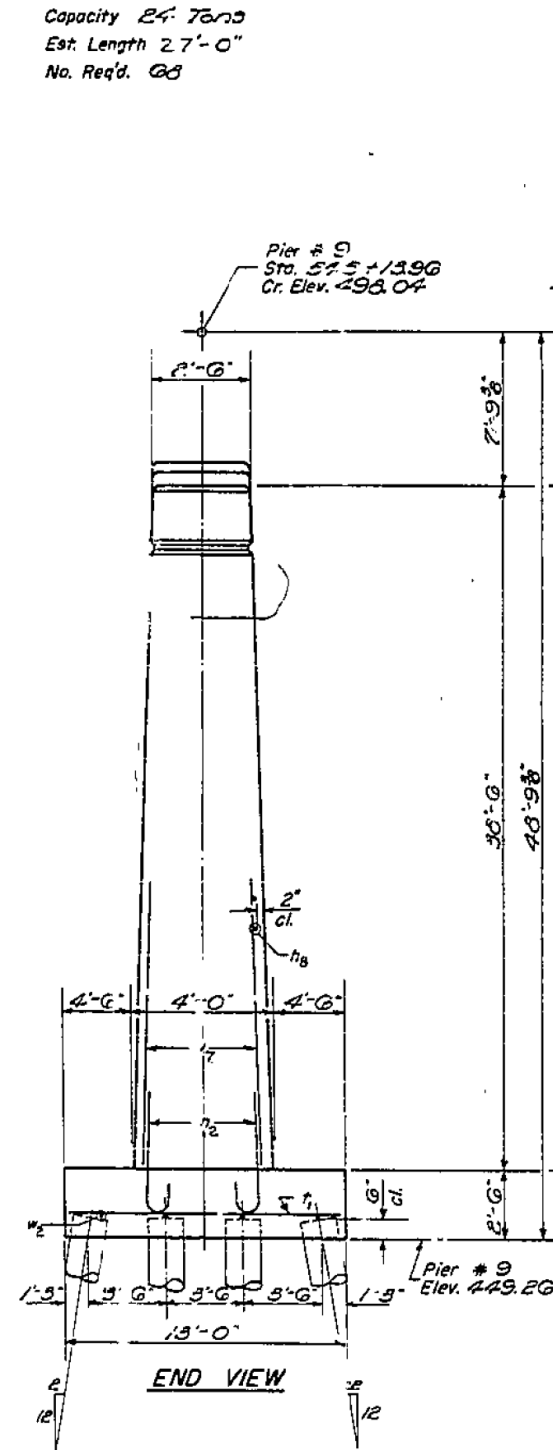


STATE OF ILLINOIS
DEPARTMENT OF PUBLIC WORKS & BUILDINGS
DIVISION OF HIGHWAYS

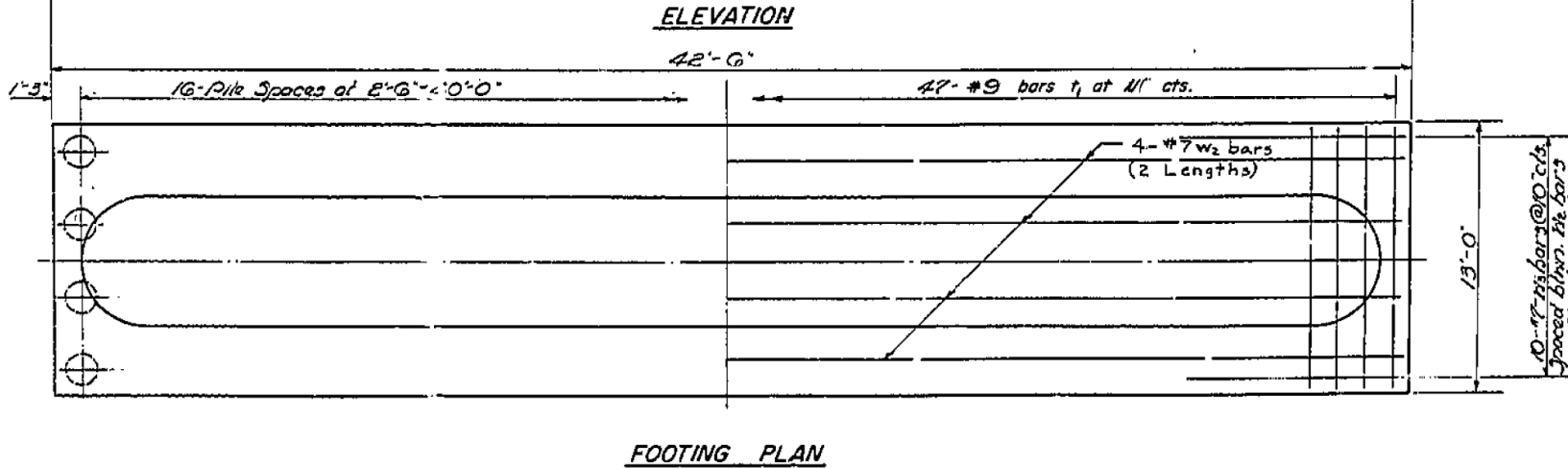
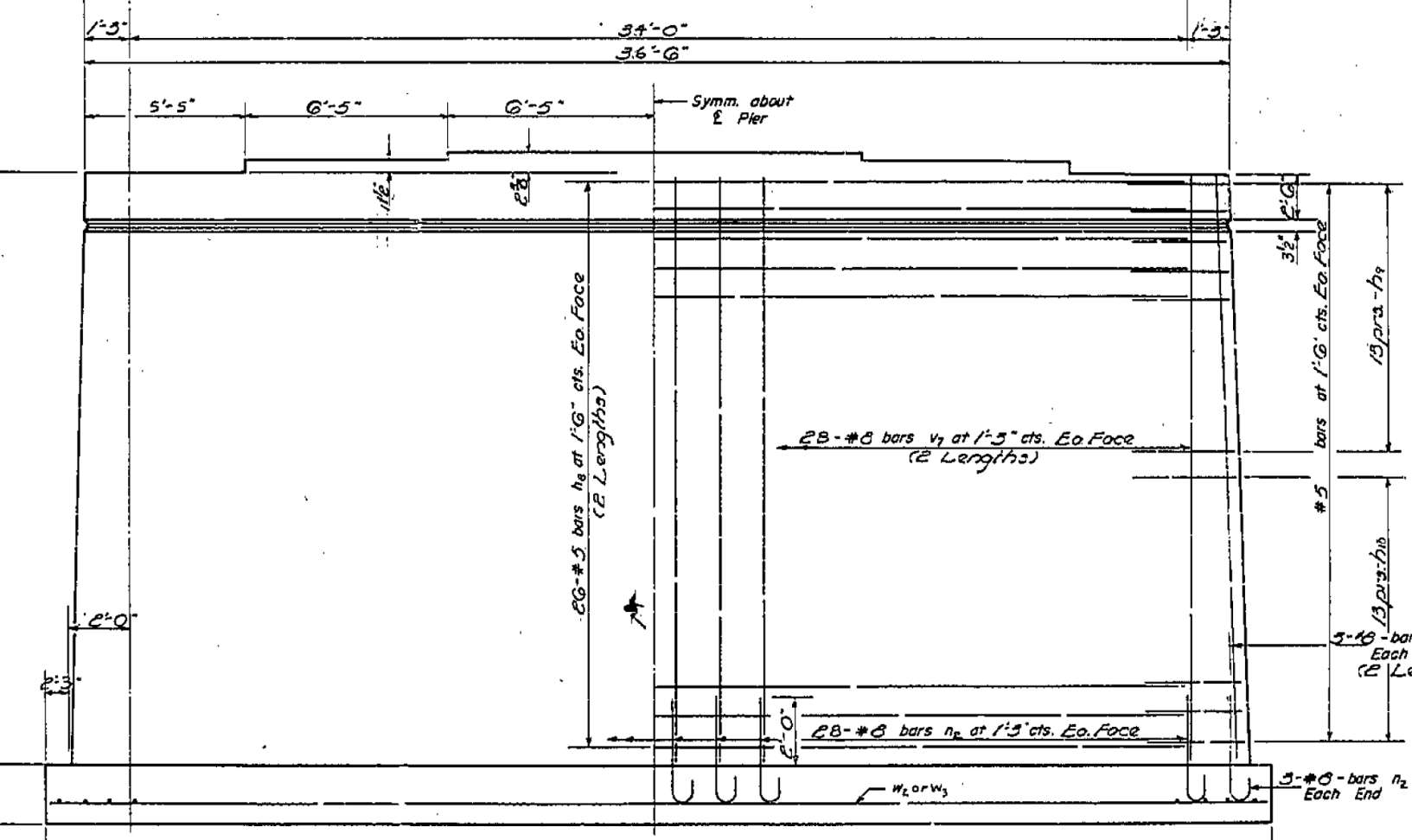
ROUTE NO.	SECTION	MITT	TOTAL SHEETS	SHEET NO.	SHEET NO. 16
70	26-3B-1(12)	FAYETTE	36	20	30 SHEETS
FED. ROAD DIST. NO. 1		ILLINOIS	FED. AID PROJECT		

PILE DATA
Type *Timber*
Capacity *24 Tons*
Est. Length *27'-0"*
No. Req'd. *68*



BILL OF MATERIAL

Bar	No.	Size	Length	Shape
h8	10	#5	17'-5"	—
h9	52	#5	3'-3"	U
h10	5	#5	5'-10"	U
n2	62	#8	4'-11"	C
t1	47	#9	12'-8"	—
v1	12.4	#8	20'-0"	—
w2	8	#7	22'-0"	—
w3	20	#7	6'-0"	—
Class A Concrete		Cu. Yds.	220	
Reinforcement Bars		Lbs.	12560	
Timber Piles		Lin. Ft.	1836	



DESIGNED *R.X. Taylor*
CHECKED *G.H. Hagan*
DRAWN *M.A. Scuzman*
APPROVED *J.E. Bluff*
JUNE 6 1963
EXAMINED *W. Beaman*
PASSED *G.H. Hagan*

PIER #9
F.A.I.R.T. 70-SEC. 26-3B-1(12)
FAYETTE COUNTY
STA. 54.4+27



USER NAME = has	DESIGNED - ELH	REVISED -
ESCA PROJECT NO. 1000.05	DRAWN - HAS	REVISED -
PLOT SCALE = 0.1667 / IN.	CHECKED - RDP	REVISED -
PLOT DATE = 1/29/2014 2:09:00 PM	DATE - 08/13	REVISED -

STATE OF ILLINOIS
DEPARTMENT OF TRANSPORTATION

STRUCTURE NO. 026-0018 EXISTING BRIDGE PLANS
WB - FOR INFORMATION ONLY

F.A.I.R.T. 70	SECTION (26-3B-1, 3B-1(3))BR	COUNTY FAYETTE	TOTAL SHEETS 277	SHEET NO. 208
SCALE:			SHEET NO. 15 OF 28 SHEETS STA. TO STA.	
FED. ROAD DIST. NO. ILLINOIS		FED. AID PROJECT		