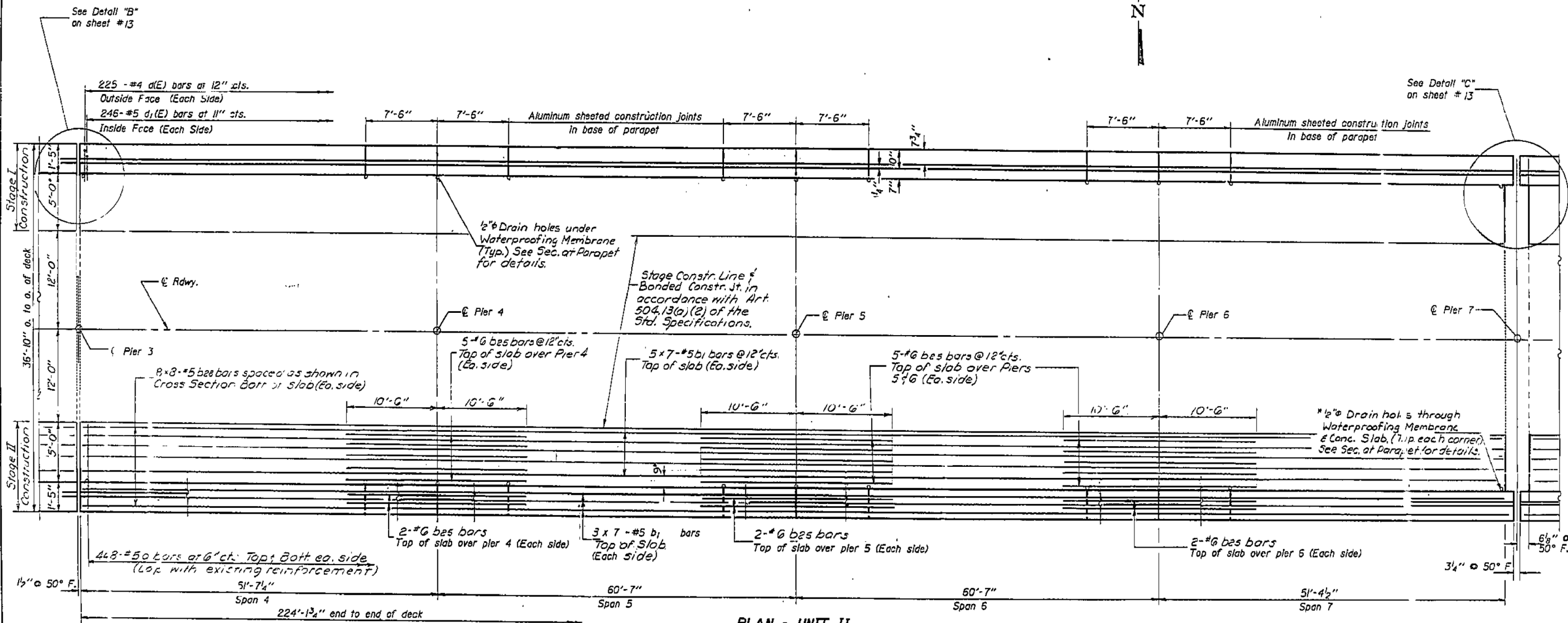
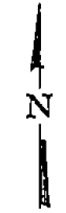


STATE OF ILLINOIS  
DEPARTMENT OF TRANSPORTATION

ROUTE NO.	SECTION	COUNTY	TOTAL SHEETS	SHEET NO.
70	(26-3B-1)	FAYETTE	31	10

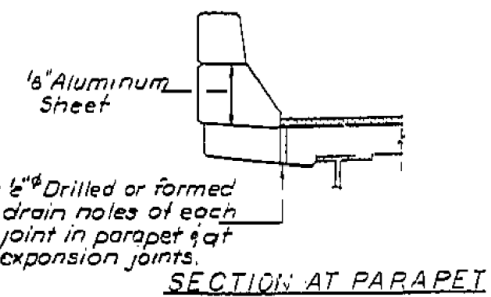
SHEET NO. 6  
15 SHEETS



PLAN - UNIT II

Notes:  
See sheet #10 for superstructure details and Bill of Material.  
Reinforcement bars designated (E) shall be epoxy coated.  
Bars indicated thus 20 x 3-#5 etc. Indicates 20 lines of bars with 3 lengths per line.  
See sheet #9 for Parapet Elevation  
Existing reinforcement extending into the new concrete shall be cleaned and incorporated into the new concrete (2" min. embedment req'd).  
See sheet #1 for Floor Drain and Drainage Scupper Spaces.

Cut bars as necessary to miss scuppers and floor drains.  
\* Place to clear 4x4x2.



DESIGNED: [Signature]  
CHECKED: David Burtch  
DRAWN: mercado  
CHECKED: D.E. L.L.  
APPROVED: [Signature]  
DIRECTOR OF HIGHWAYS

MIN. BAR LAPS  
#5 bars 2'-2"

SUPERSTRUCTURE - UNIT II  
F.A.I. RTE. 70 SEC. 26-3B-1 (2)  
FAYETTE COUNTY  
STA. 544+27.00

PRINT DRIVER: LEO S. BARON... SCALE: 1/8" = 1'-0"...



USER NAME = has	DESIGNED - ELH	REVISED -
ESCA PROJECT NO. 1000.05	DRAWN - HAS	REVISED -
PLOT SCALE = 0.1667 / IN.	CHECKED - RDP	REVISED -
PLOT DATE = 1/29/2014 2:09:55 PM	DATE - 08/13	REVISED -

STATE OF ILLINOIS  
DEPARTMENT OF TRANSPORTATION

STRUCTURE NO. 026-0018 EXISTING BRIDGE PLANS  
WB - FOR INFORMATION ONLY  
SCALE: SHEET NO. 21 OF 28 SHEETS STA. TO STA.

F.A.I. RTE.	SECTION	COUNTY	TOTAL SHEETS	SHEET NO.
70	(26-3B-1, 3B-1(3))BR	FAYETTE	277	214
CONTRACT NO. 74175			FED. ROAD DIST. NO. ILLINOIS FED. AID PROJECT	