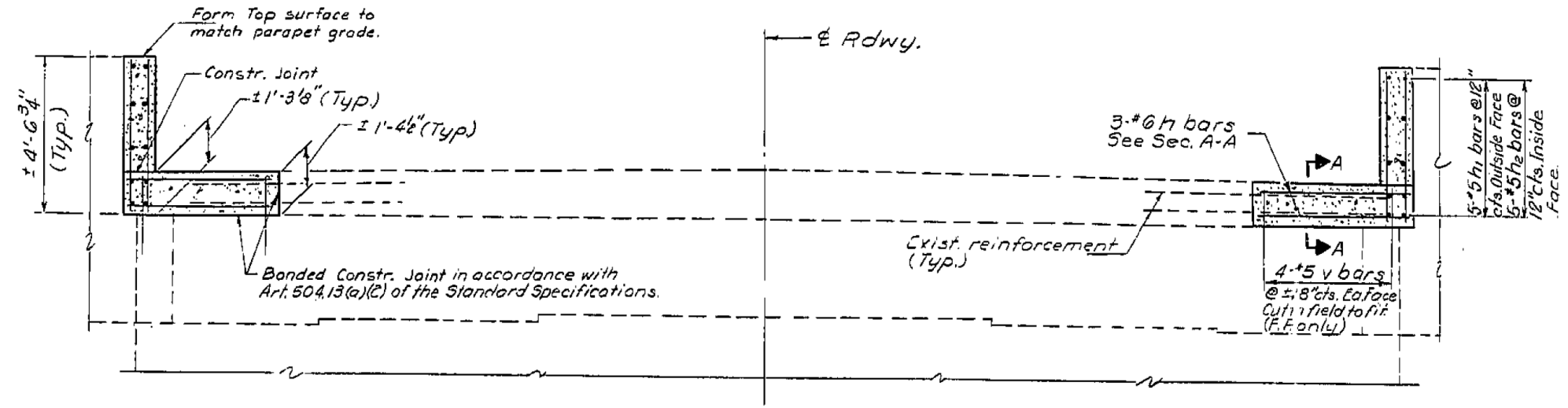


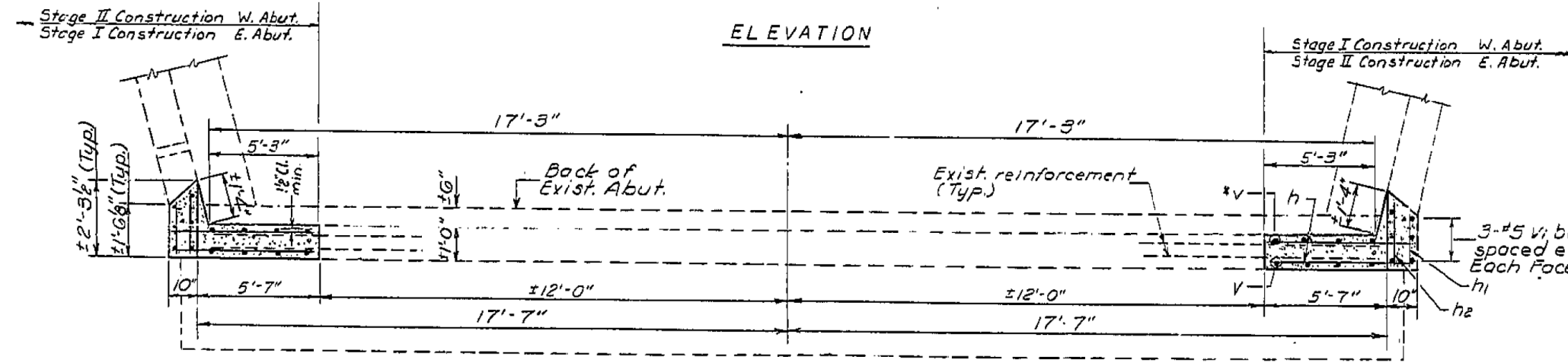
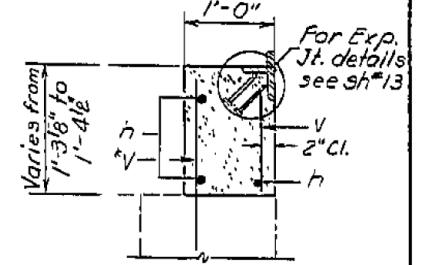
* Epoxy grout 1 bars in 7/8" x 9" min. drilled holes. See Special Provisions.

ROUTE NO.	SECTION	SHEET	TOTAL SHEETS	SHEET NO.
70	(1) 26	E	31	19

SHEET NO. 15
15 SHEETS



Notes:
Cost of Struct. Excav. and backfill behind the abutments is incidental to the concrete removal.
Abutment shall be reconstructed after superstructure and parapet are in place.
Existing reinforcement extending into new concrete shall be cleaned and incorporated into the new concrete, (2'-2" min. embedment required).
Hatched areas indicate concrete removal.

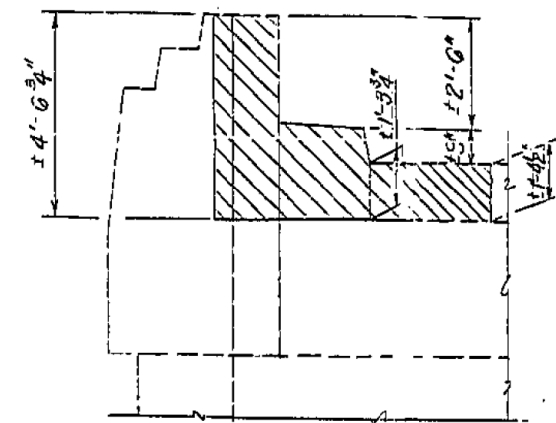


ELEVATION

PLAN

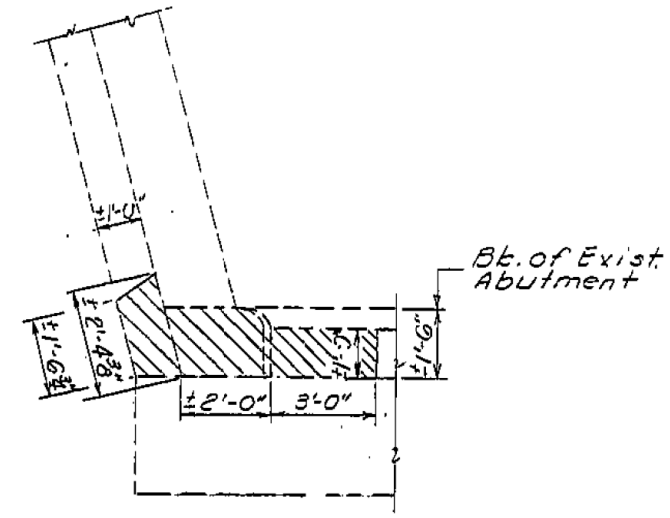
EAST & WEST ABUTMENTS
BILL OF MATERIAL

Bar No.	Size	Length	Shape
h	#6	6'-2"	—
h1	#5	1'-3"	—
h2	#5	2'-0"	—
v	#5	2'-0"	—
v1	#5	4'-3"	—
Reinforcement Bars POUND			350
Class X Concrete Cu. Yd.			22
Concrete Removal Cu. Yd.			3



ELEVATION

REMOVAL SKETCH



PLAN

ABUTMENTS
F.A.I. RTE. 70 SEC. 26-3B-1(2) I
FAYETTE COUNTY
STA. 544+2700

DESIGNED David Burdick
CHECKED L. A. Hill
DRAWN Mercado
CHECKED D.B. L.K.

EXAMINED April 2, 1987
DRAWN D. Kasber
APPROVED James J. Rouben
DIRECTOR OF HIGHWAYS

Rev. 4/21/87 F.M.

PRINT DRIVER: LEO S. BARNETT
SCALE: 1/4" = 1'-0"
DATE: 1/29/2014



USER NAME = has	DESIGNED - ELH	REVISED -
ESCA PROJECT NO. 1000.05	DRAWN - HAS	REVISED -
PLOT SCALE = 0.1667' / IN.	CHECKED - RDP	REVISED -
PLOT DATE = 1/29/2014 2:10:51 PM	DATE - 08/13	REVISED -

STATE OF ILLINOIS
DEPARTMENT OF TRANSPORTATION

STRUCTURE NO. 026-0018 EXISTING BRIDGE PLANS
WB - FOR INFORMATION ONLY

SCALE: SHEET NO. 28 OF 28 SHEETS STA. TO STA.

F.A.I. RTE.	SECTION	COUNTY	TOTAL SHEETS	SHEET NO.
70	(26-3B-1, 3B-1(3))BR	FAYETTE	277	221
CONTRACT NO. 74175				
FED. ROAD DIST. NO.		ILLINOIS FED. AID PROJECT		