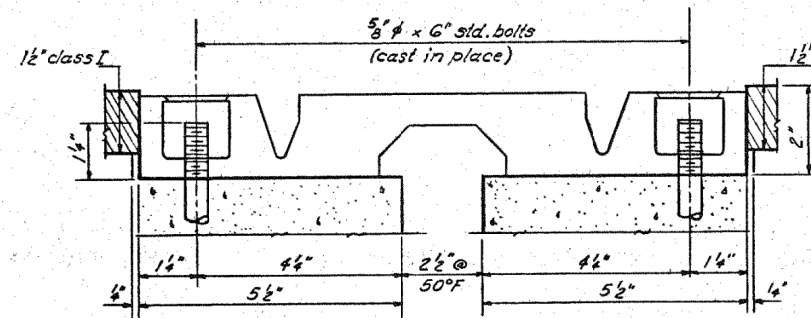


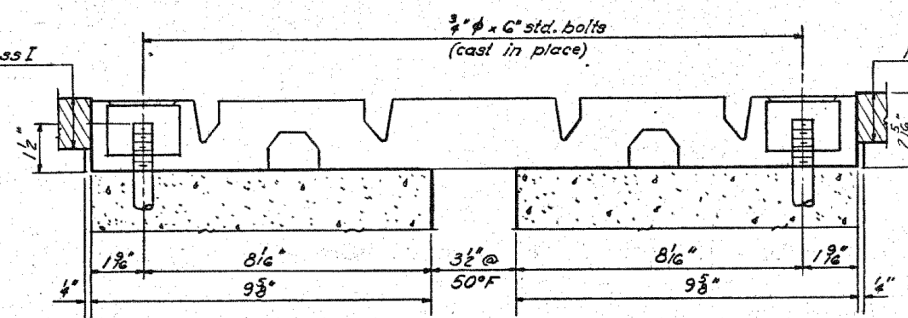
STATE OF ILLINOIS  
DEPARTMENT OF TRANSPORTATION

ROUTE NO.	SECTION	COUNTY	TOTAL SHEETS	SHEET NO.
I-70	*	FAYETTE	60	24
SHEET NO. 12				
29 SHEETS				

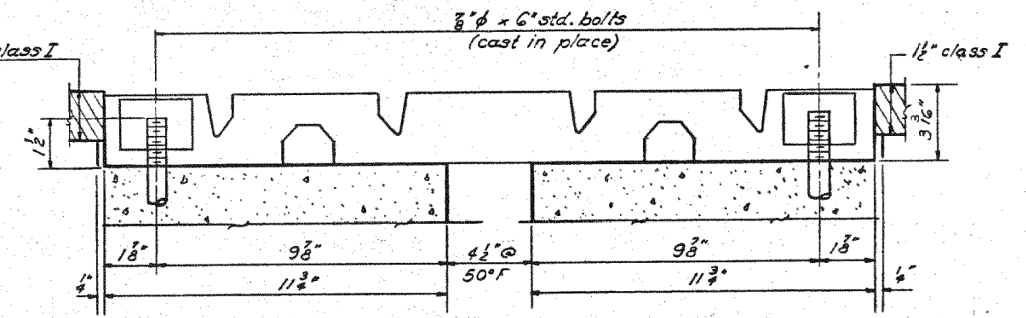
FED. ROAD DIST. NO. 7 ILLINOIS FED. AID PROJECT  
#26-3B-1(3)



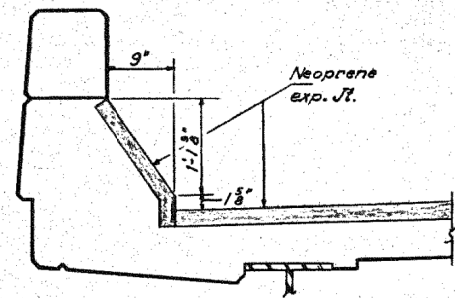
**NEOPRENE EXPANSION JOINT (2 1/2")**  
See Special Provisions



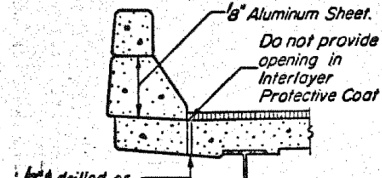
**NEOPRENE EXPANSION JOINT (4")**  
See Special Provisions



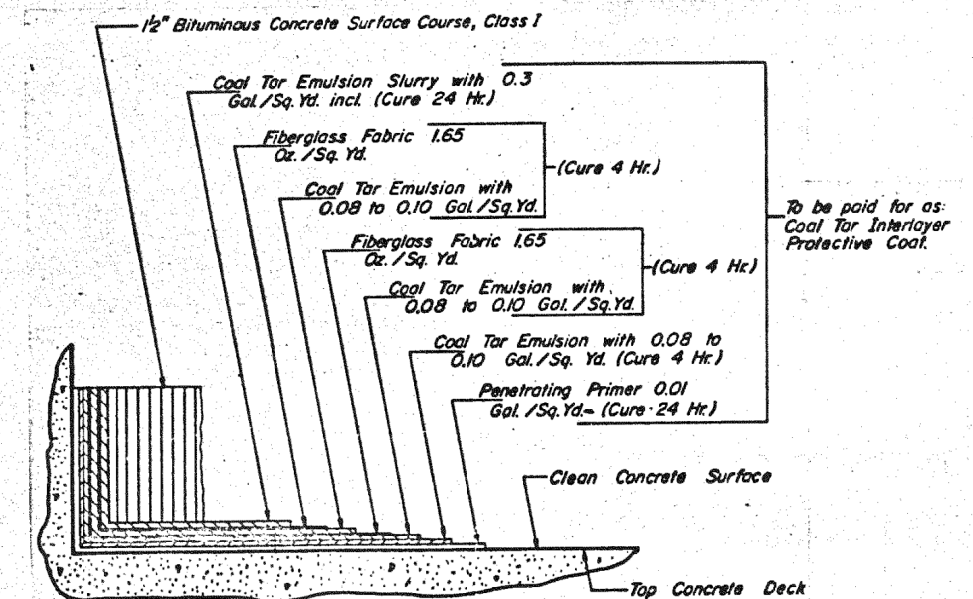
**NEOPRENE EXPANSION JOINT (6 1/2")**  
See Special Provisions



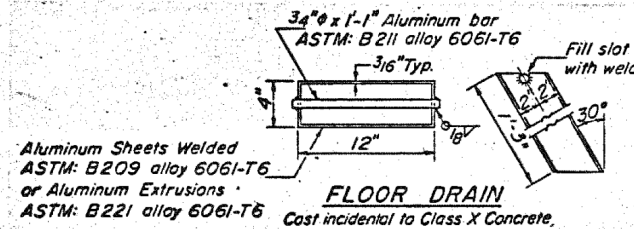
**SECTION AT CURB JOINT**



**SECTION AT CURB JOINTS**



**DETAIL OF DECK SURFACING**



**FLOOR DRAIN**  
Cast incidental to Class X Concrete.

DESIGNED	R.K. Mathew
CHECKED	James Pence
DRAWN	Simon Ustankov
CHECKED	JP

EXAMINED	Richard H. Hollman JULY 30 1976
PASSED	W.C. Baumann ENGINEER OF DESIGN
APPROVED	Richard H. Hollman SUPERVISOR

**SUPERSTRUCTURE DETAILS**  
**R.A.I.R.T. 70 SEC. 26-3B-1(3) EBL**  
**FAYETTE COUNTY**  
**STA. 543A+92.91**



USER NAME = has	DESIGNED - ELH	REVISED -
ESCA PROJECT NO. 1000.05	DRAWN - HAS	REVISED -
PLOT SCALE = 0.1667' / IN.	CHECKED - RDP	REVISED -
PLOT DATE = 1/29/2014 2:14:28 PM	DATE - 08/13	REVISED -

STATE OF ILLINOIS  
DEPARTMENT OF TRANSPORTATION

STRUCTURE NO. 026-0085 EXISTING BRIDGE PLANS  
EB - FOR INFORMATION ONLY

SCALE: SHEET NO. 6 OF 23 SHEETS STA. TO STA.

F.A.I. R.T.	SECTION	COUNTY	TOTAL SHEETS	SHEET NO.
70	(26-3B-1, 3B-1(3))BR	FAYETTE	277	227
CONTRACT NO. 74175				
FED. ROAD DIST. NO. ILLINOIS FED. AID PROJECT				