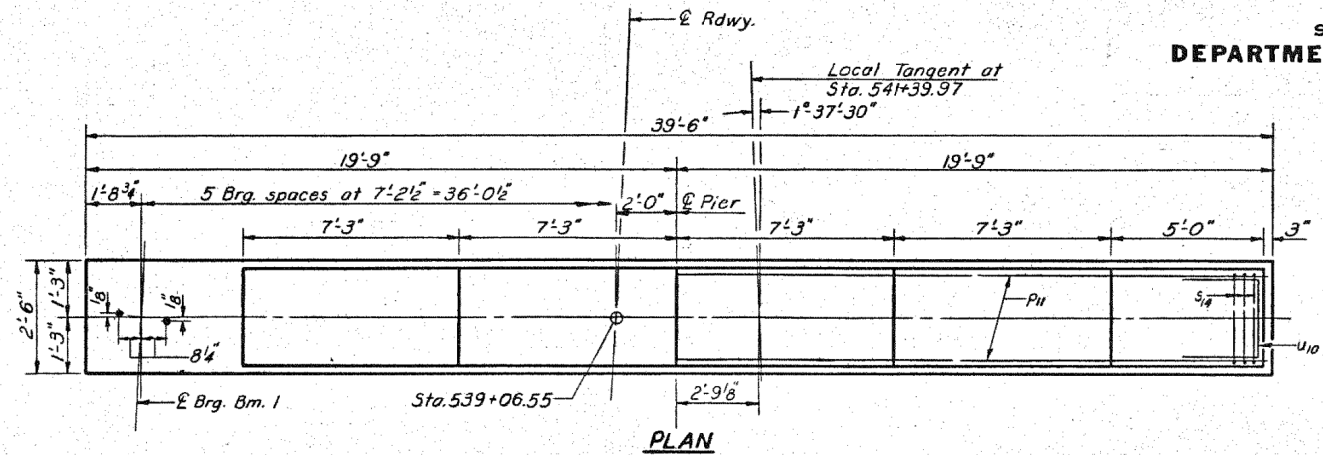


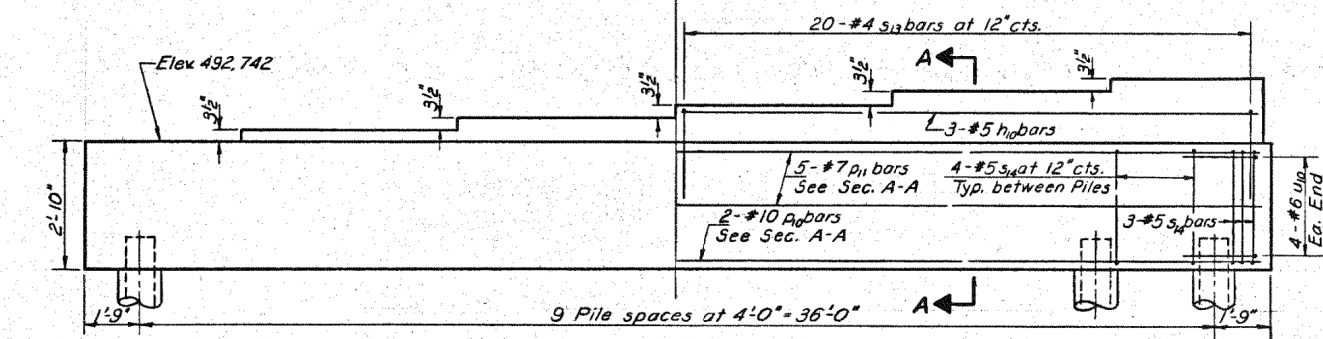
STATE OF ILLINOIS
DEPARTMENT OF TRANSPORTATION

| | | | | |
|--|---------|---------|--------------|-----------|
| ROUTE NO. | SECTION | COUNTY | TOTAL SHEETS | SHEET NO. |
| F.A.I. RT. 70 | # | FAYETTE | 60 | 34 |
| FED. ROAD DIST. NO. 7 ILLINOIS FED. AID PROJECT # 26-3B-1(3) | | | | |

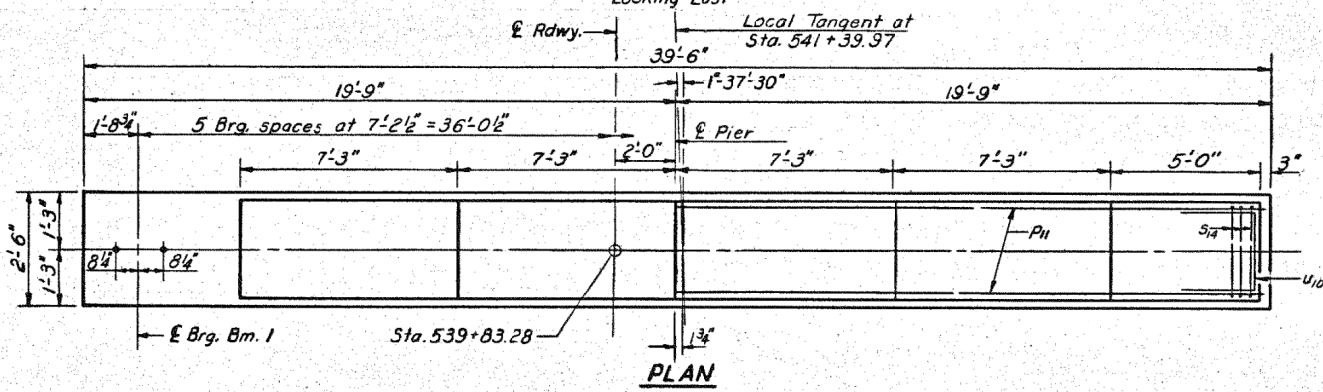
SHEET NO. 22
29 SHEETS



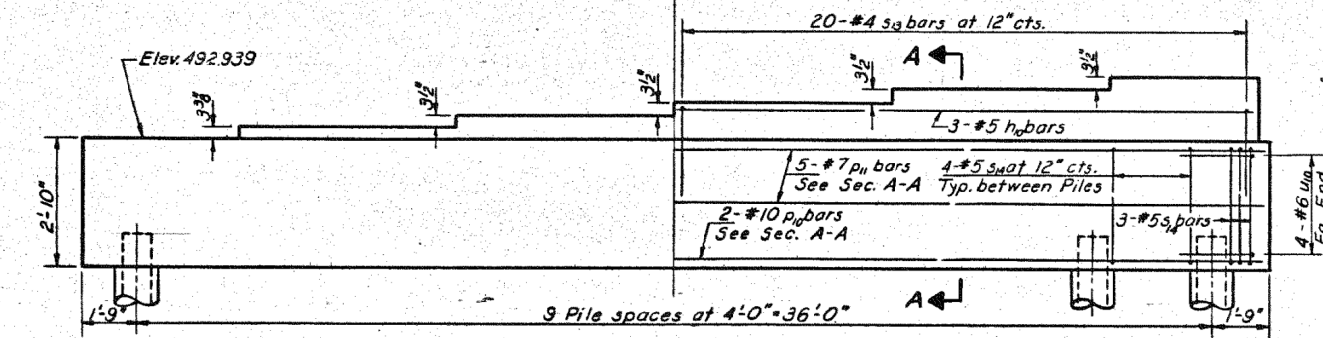
PLAN



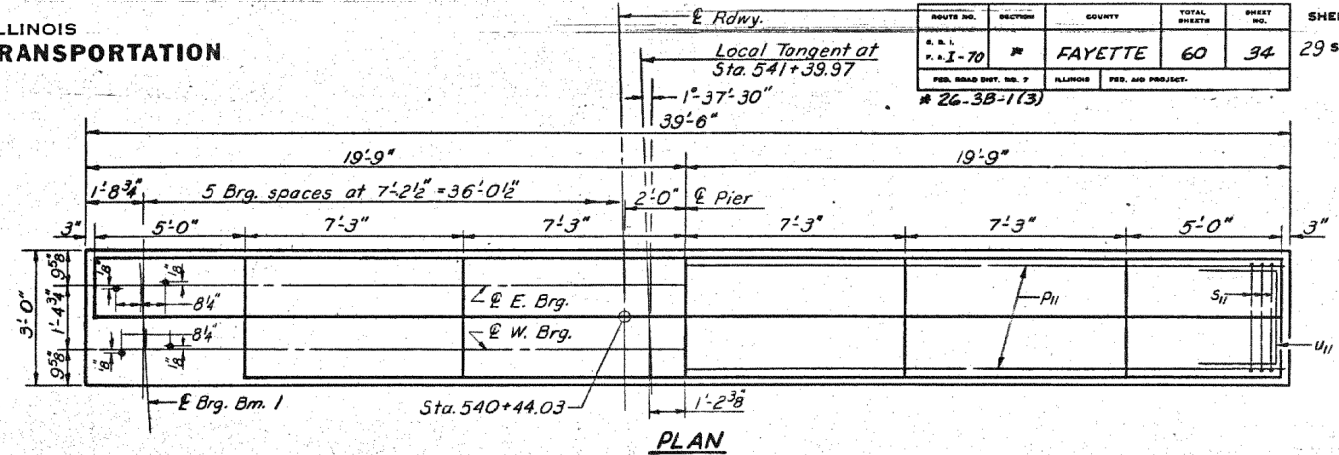
ELEVATION PIER 1
Looking East



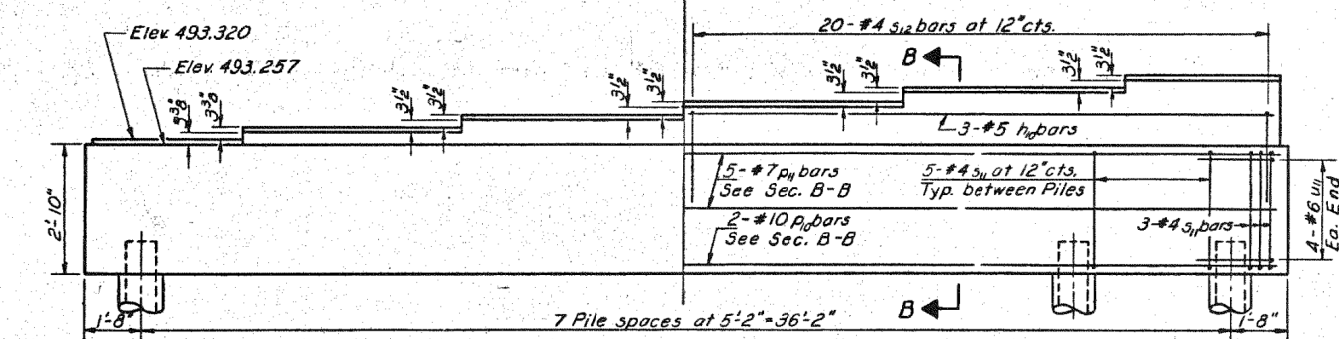
PLAN



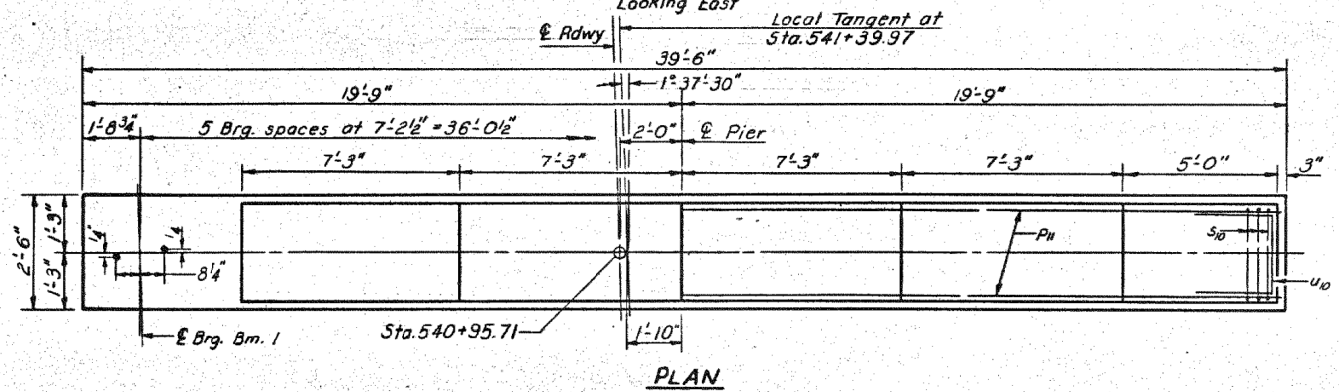
ELEVATION PIER 2
Looking East



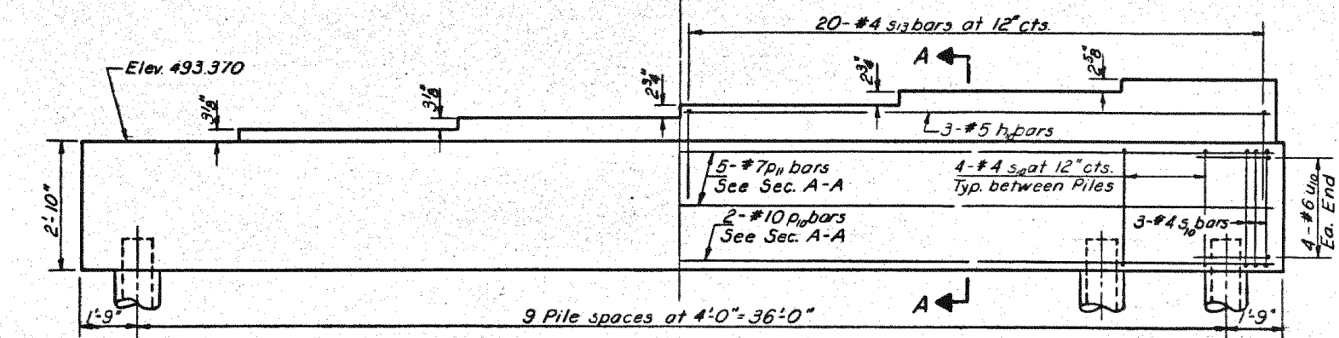
PLAN



ELEVATION PIER 3
Looking East



PLAN



ELEVATION PIER 4
Looking East

| | |
|----------|--------------|
| DESIGNED | R. K. Mathur |
| CHECKED | James Pene |
| DRAWN | R. P. Sumner |
| CHECKED | JP |

| | |
|----------|---------------------|
| EXAMINED | July 20 1972 |
| PASSED | W. G. Baumann |
| APPROVED | Richard A. Holtzman |

NOTES: For Bill of Material, bar details, Sec A-A & Sec. B-B
& Pile Data see sheet # 24

PIERS 1, 2, 3 & 4
F.A.I. RT. 70 SEC. 26-3B-1(3) E.B.L.
FAYETTE COUNTY
STATION 543A+92.91

PRINT DRIVER: LEO S. BARON
SCALE: 1/4" = 1'-0"
FILE NAME: C:\PLOT\26-3B-1(3)E.B.L.PLOT



| | | | | | |
|------------------|------------------------|----------|---------|---------|---|
| USER NAME | = has | DESIGNED | - ELH | REVISED | - |
| ESCA PROJECT NO. | 1000.05 | DRAWN | - HAS | REVISED | - |
| PLOT SCALE | = 0.1667 / IN. | CHECKED | - RDP | REVISED | - |
| PLOT DATE | = 1/29/2014 2:17:09 PM | DATE | - 08/13 | REVISED | - |

STATE OF ILLINOIS
DEPARTMENT OF TRANSPORTATION

STRUCTURE NO. 026-0085 EXISTING BRIDGE PLANS
EB - FOR INFORMATION ONLY

SCALE: SHEET NO. 16 OF 23 SHEETS STA. TO STA.

| | | | | |
|--------------------|----------------------|---------|---|-----------|
| F.A.I. RT. | SECTION | COUNTY | TOTAL SHEETS | SHEET NO. |
| 70 | (26-3B-1, 3B-1(3))BR | FAYETTE | 277 | 237 |
| CONTRACT NO. 74175 | | | FED. ROAD DIST. NO. ILLINOIS FED. AID PROJECT | |