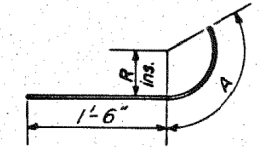
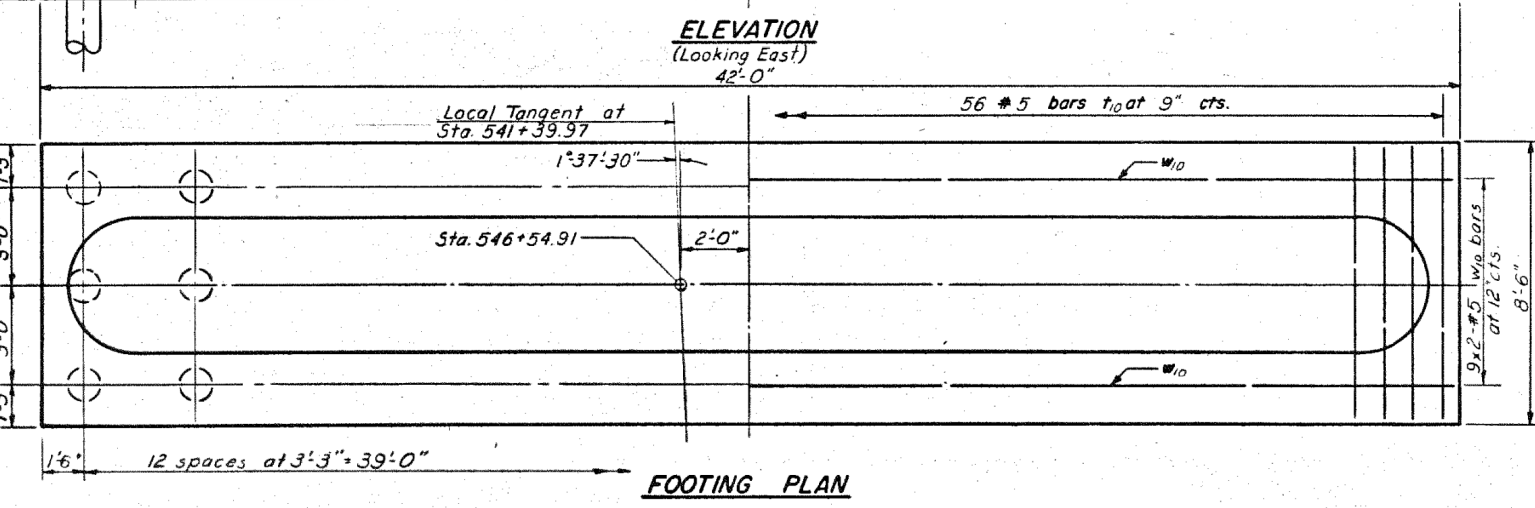
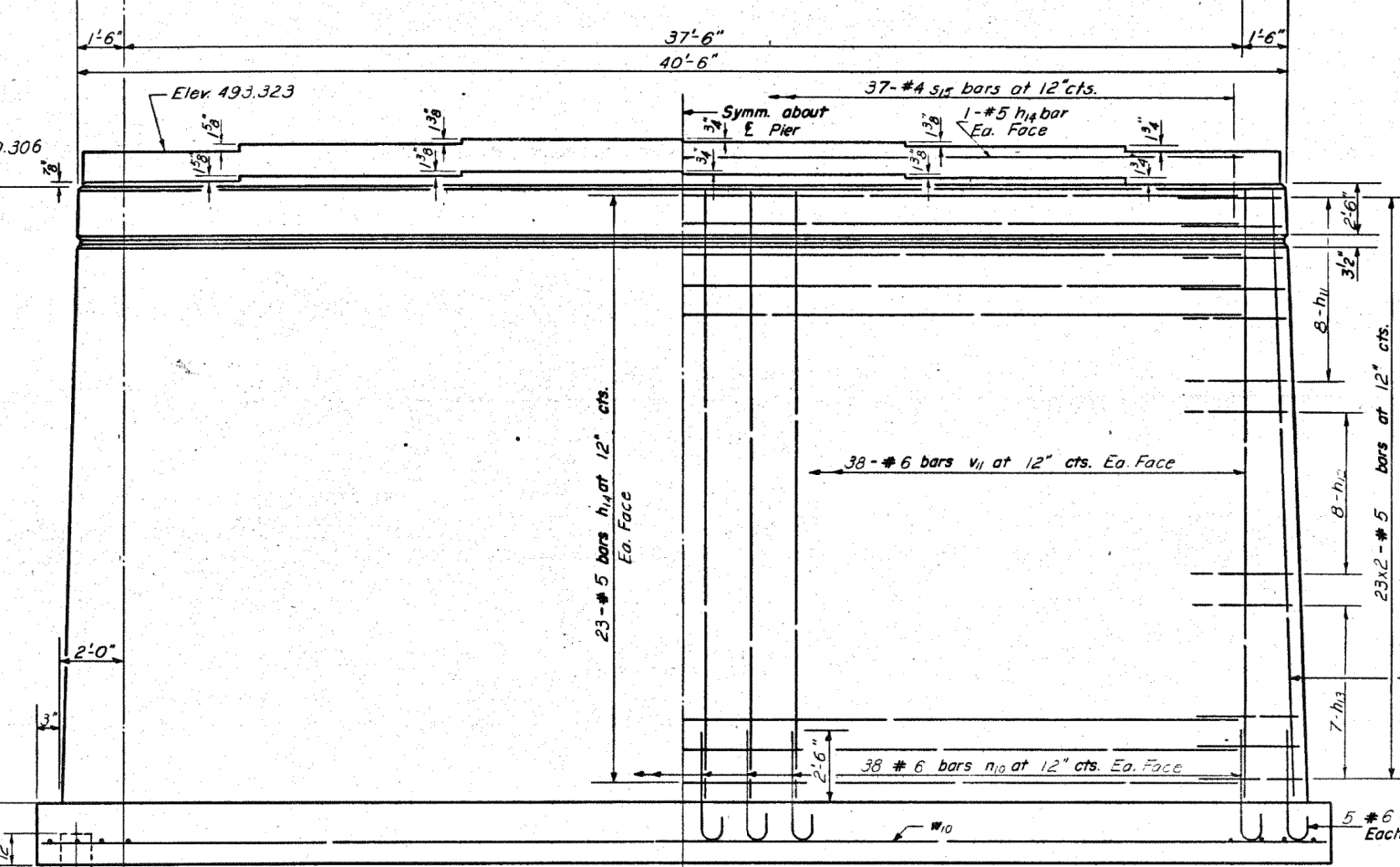
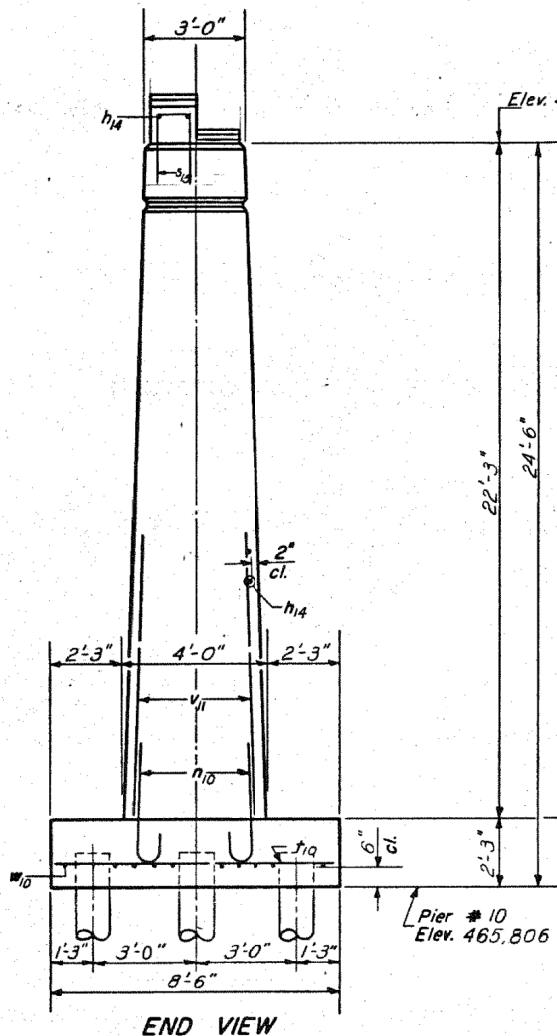
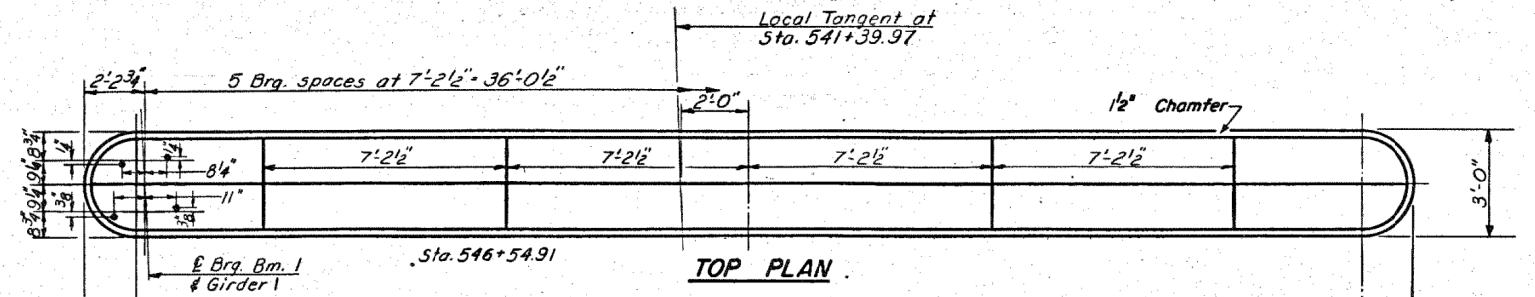


STATE OF ILLINOIS
DEPARTMENT OF TRANSPORTATION

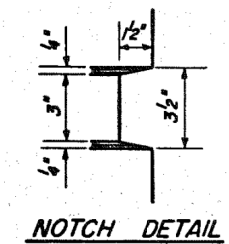
ROUTE NO.	SECTION	COUNTY	TOTAL SHEETS	SHEET NO.
F.A.I. RT-70	#	FAYETTE	60	39
SHEET NO. 27				
29 SHEETS				
#26-38-1(3)				

PILE DATA

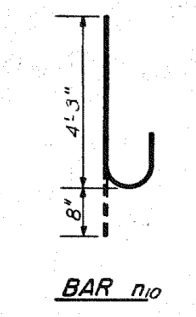
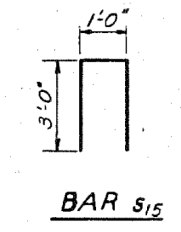
Type Creosoted
Capacity 22 Tons
Est. Length 35'-0" *35'*
No. Req'd. 39 *9-21-73*



Bar	R	A
h11	1'-4"	2'-8"
h12	1'-6"	3'-0"
h13	1'-8"	3'-4"



DETAIL OF BARS



BILL OF MATERIAL

Bar	No.	Size	Length	Shape
h11	32	#5	4'-2"	U
h12	32	#5	4'-6"	U
h13	28	#5	4'-10"	U
h14	48	#5	37'-6"	—
n10	86	#6	4'-11"	C
s15	37	#4	7'-0"	U
t10	56	#5	8'-3"	—
v11	85	#6	22'-0"	—
w10	18	#5	22'-6"	—
Class A Concrete				Cu. Yds. 151.7
Reinforcement Bars				Lbs. 6860
Creosoted Piles				Ltr Ft 1365

DESIGNED R. K. Mathur
CHECKED James Ponce
R.P.S. DRAWN W. A. Sausaman
CHECKED JP
EXAMINED [Signature]
PASSED [Signature]
APPROVED Richard H. Holterman

PIER 10
FAI RT 70 SEC. 26-38-1(3) E.B.L.
FAYETTE COUNTY
STATION 543A+92.91

P-1 Re-drawn 7-21-59 Rev. 11-25-59



USER NAME = has	DESIGNED - ELH	REVISED -
ESCA PROJECT NO. 1000.05	DRAWN - HAS	REVISED -
PLOT SCALE = 0.1667' / IN.	CHECKED - RDP	REVISED -
PLOT DATE = 1/29/2014 2:17:52 PM	DATE - 08/13	REVISED -

STATE OF ILLINOIS
DEPARTMENT OF TRANSPORTATION

STRUCTURE NO. 026-0085 EXISTING BRIDGE PLANS
EB - FOR INFORMATION ONLY

SCALE: SHEET NO. 21 OF 23 SHEETS STA. TO STA.

F.A.I. RTE.	SECTION	COUNTY	TOTAL SHEETS	SHEET NO.
70	(26-38-1, 38-1(3))BR	FAYETTE	277	242
CONTRACT NO. 74175				
FED. ROAD DIST. NO. ILLINOIS FED. AID PROJECT				