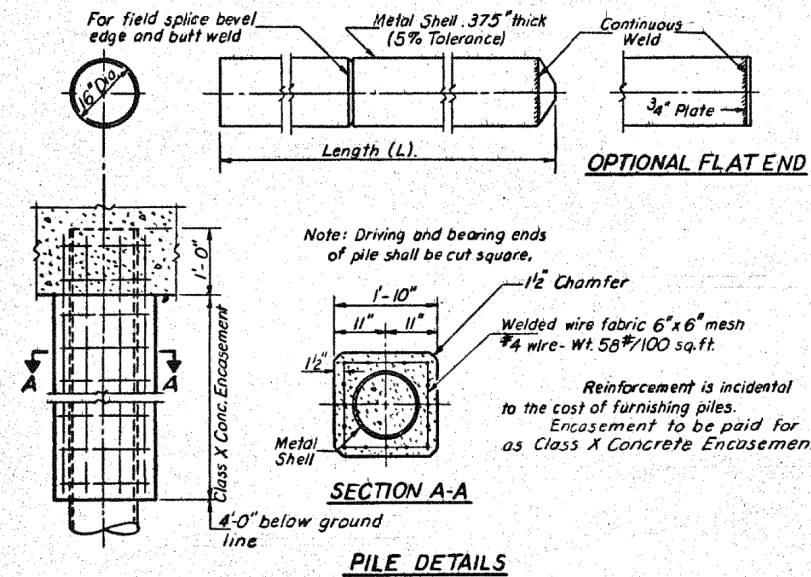


STATE OF ILLINOIS  
DEPARTMENT OF TRANSPORTATION

ROUTE NO.	SECTION	COUNTY	TOTAL SHEETS	SHEET NO.	SHEET NO. 29 29 SHEETS
F.A.I. RT. 70	#	FAYETTE	60	41	
FED. ROAD DIST. NO. 7		ILLINOIS	FED. AID PROJECT		

# 26-3B-1(3)



16" METAL SHELL PILE DETAILS  
F.A.I. RT. 70 SEC. 26-3B-1(3) E.B.L.  
FAYETTE COUNTY  
STATION 543A+92.91

DESIGNED	R. K. Mathur
CHECKED	James Pence
DRAWN	A.P.S.
CHECKED	JP

EXAMINED *[Signature]*  
PASSED *[Signature]*  
APPROVED *[Signature]*

PRINT DRIVER: L:\02-EB\B\A\16  
SCALE: 1/8" = 1'-0"  
PLOT DATE: 1/29/2014 2:18:09 PM



USER NAME = has	DESIGNED - ELH	REVISED -
ESCA PROJECT NO. 1000.05	DRAWN - HAS	REVISED -
PLOT SCALE = 0.1667' / IN.	CHECKED - RDP	REVISED -
PLOT DATE = 1/29/2014 2:18:09 PM	DATE - 08/13	REVISED -

STATE OF ILLINOIS  
DEPARTMENT OF TRANSPORTATION

STRUCTURE NO. 026-0085 EXISTING BRIDGE PLANS  
EB - FOR INFORMATION ONLY

SCALE: SHEET NO. 23 OF 23 SHEETS STA. TO STA.

F.A.I. RTE.	SECTION	COUNTY	TOTAL SHEETS	SHEET NO.
70	(26-3B-1, 3B-1(3))BR	FAYETTE	277	244
CONTRACT NO. 74175				
FED. ROAD DIST. NO.		ILLINOIS FED. AID PROJECT		