

*FAP 690/FAS 819/FAP 322

D-98-063-13

STATE OF ILLINOIS
DEPARTMENT OF TRANSPORTATION

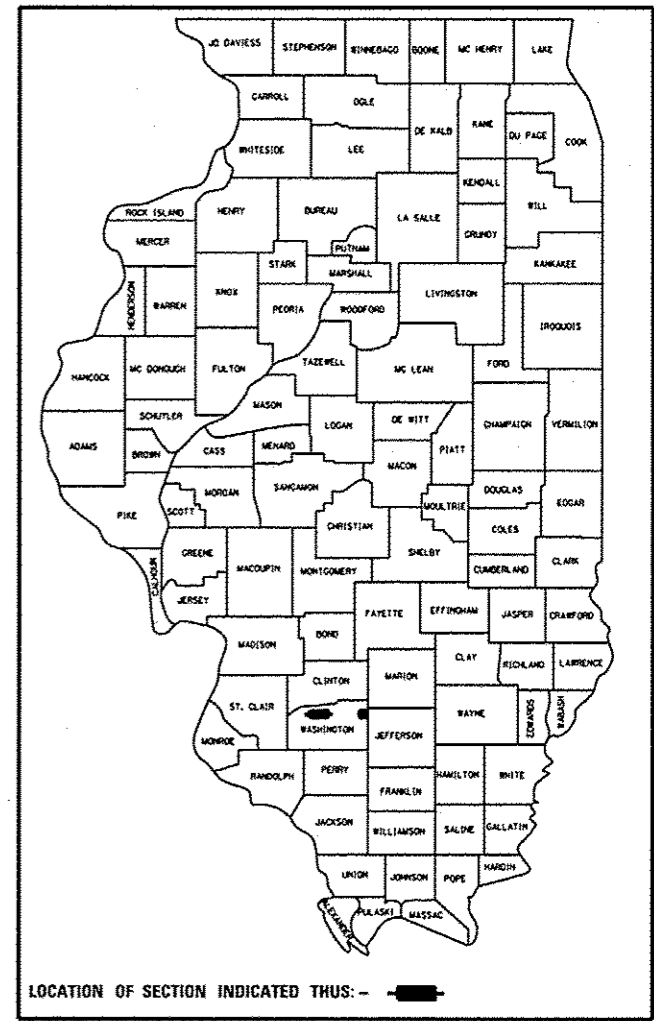
DIVISION OF HIGHWAYS

**PROPOSED
HIGHWAY PLANS**

FAP 690 /FAS 819 /FAP 322 (IL 177)
SECTION (109,110)RS-1, 31-2RS
PROJECT ACF-ACRS-000S (984)
3P RESURFACING & SHOULDER ADDITION
WASHINGTON COUNTY

C-98-062-13

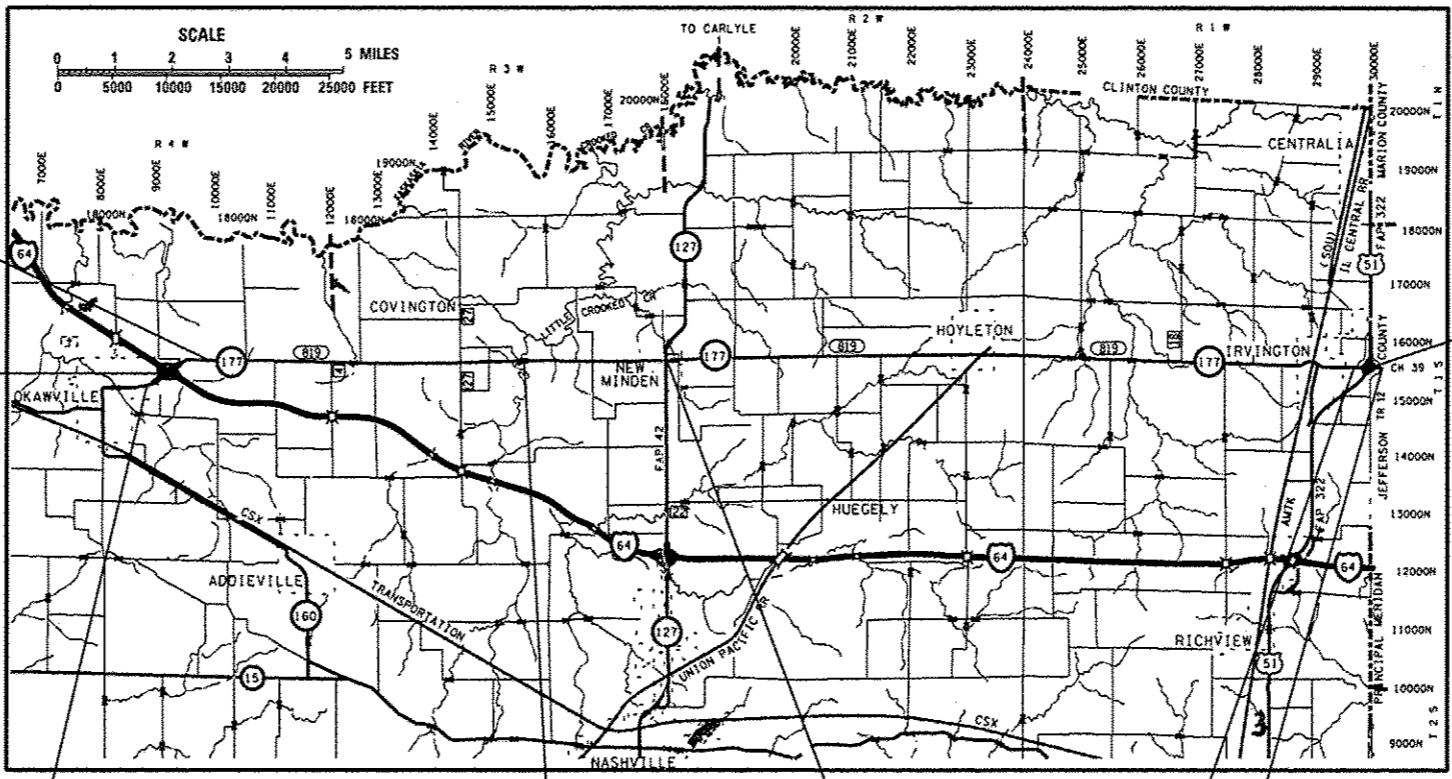
FOR INDEX OF SHEETS, SEE SHEET NO. 2



LOCATION OF SECTION INDICATED THUS: - [black rectangle] -

ADT'S

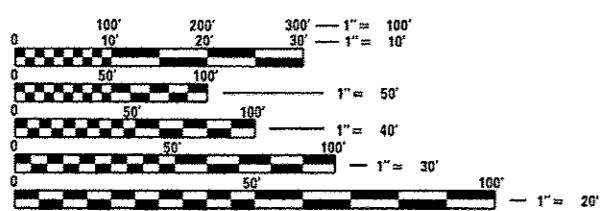
| LOCATION | NO. 1 | | NO. 2 | |
|----------|-------|-------|-------|-------|
| | W. OF | E. OF | W. OF | E. OF |
| I-64 | I-64 | I-64 | I-64 | I-64 |
| 2011 | 3,250 | 1,450 | 2,050 | |
| 2034 | 4,100 | 1,700 | 2,500 | |
| SU% | 6.2 | 3.1 | 4.4 | |
| MU% | 4.0 | 6.2 | 2.4 | |



STA. EQUATON
STA. 81+95 BK =
STA. 148+38 AH

BRIDGE OMISSION
SN 095-0038
STA. 48+62 TO
STA. 51+38

BRIDGE OMISSION
SN 095-0068
STA. 98+12.00 TO
STA. 102+61.41



FULL SIZE PLANS HAVE BEEN PREPARED USING STANDARD ENGINEERING SCALES. REDUCED SIZED PLANS WILL NOT CONFORM TO STANDARD SCALES. IN MAKING MEASUREMENTS ON REDUCED PLANS, THE ABOVE SCALES MAY BE USED.

J.U.L.I.E.
JOINT UTILITY LOCATION INFORMATION FOR EXCAVATION
1-800-892-0123
OR 811

| | | | | |
|--|---|---|--|--|
| BEGIN LOCATION NO. 1 STA. 12+50 LAT.: 38.43595 LONG.: -89.54207 | BRIDGE OMISSION SN 095-0066 STA. 440+87.40 TO STA. 443+52.00 | END LOCATION NO. 1 STA. 578+59 LAT.: 38.44171 LONG.: -89.36966 | BEGIN LOCATION NO. 2 STA. 85+00 LAT.: 38.43793 LONG.: -89.15057 | END LOCATION NO. 2 STA. 106+06.36 LAT.: 38.43779 LONG.: -89.14388 |
|--|---|---|--|--|

TOTAL GROSS LENGTH = 52,072.36 FT. = 9.862 MILE
TOTAL NET LENGTH = 51,082.35 FT. = 9.675 MILE

DESIGN DESIGNATION
N/A

PROJECT ENGINEER: PATTI LEBEAU (618) 346-3179
PROJECT MANAGER: REBECCA THARP (618) 346-3323

CONTRACT NO. 76G61

LOCATION NO. 1
GROSS LENGTH = 49,966.00 FT. = 9.463 MILE
NET LENGTH = 49,425.40 FT. = 9.361 MILE

LOCATION NO. 2
GROSS LENGTH = 2,106.36 FT. = 0.399 MILE
NET LENGTH = 1,656.95 FT. = 0.314 MILE

STATE OF ILLINOIS
DEPARTMENT OF TRANSPORTATION
DIVISION OF HIGHWAYS

SUBMITTED *Jan 29 20 14*
Jeffrey L. Keenan
DEPUTY DIRECTOR OF HIGHWAYS, REGION 5 ENGINEER

March 21 20 14
John D. Baranzelli P.E.
ENGINEER OF DESIGN AND ENVIRONMENT

March 21 20 14
Omer Osman P.E.
DIRECTOR OF HIGHWAYS, CHIEF ENGINEER

**PRINTED BY THE AUTHORITY
OF THE STATE OF ILLINOIS**