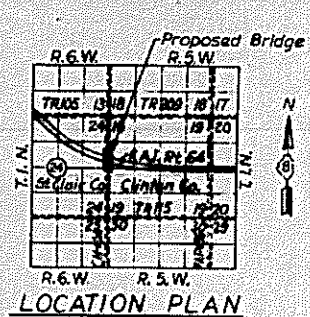
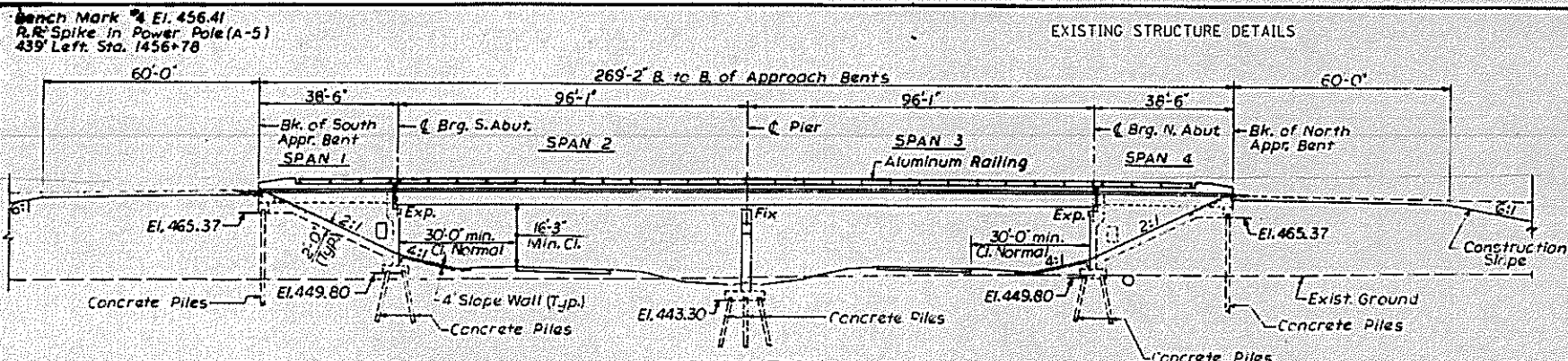
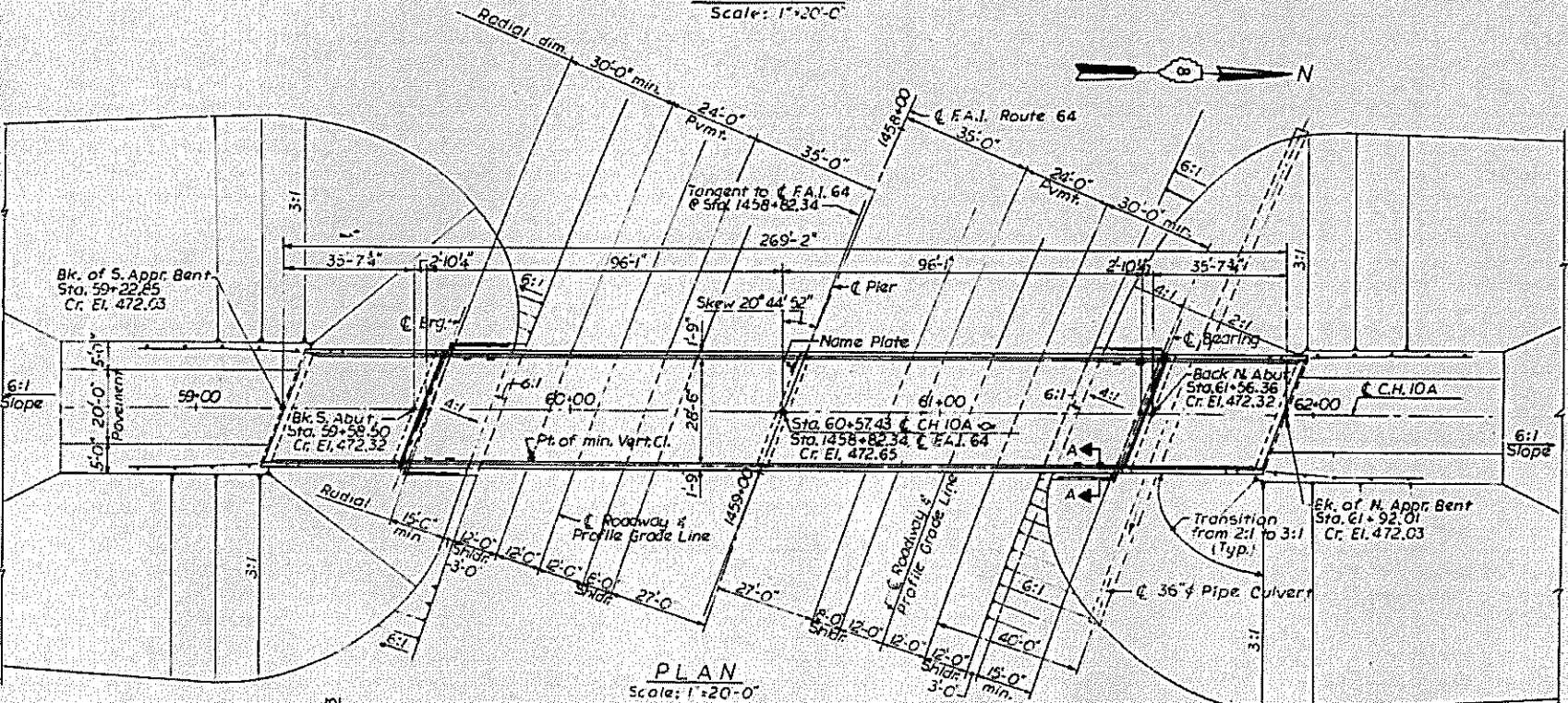


FOR INFORMATION ONLY



NAME PLATE
See Std. 2113

STATION 1458+82.34
BUILT 19 BY
STATE OF ILLINOIS
F.A.I. RT. 64 SEC. 82.14(HB)
EA. PROJ. 1-64-2(20)
LOADING HS15



DESIGN STRESSES AND LOADS

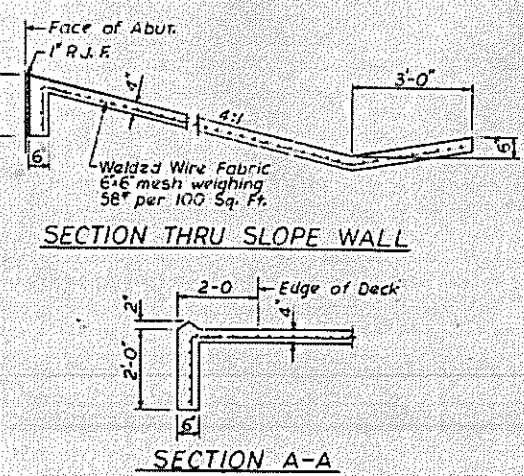
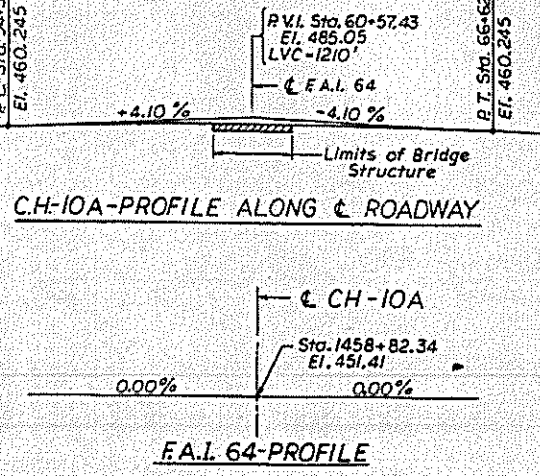
* $f'_s = 248,000$ psi. — Prestressing Steel
 $f_{sl} = 17,000$ psi.
 $f_c = 5,000$ psi. — Prestressed Concrete
 $f_{ci} = 4,000$ psi.
 $f_c = 1,200$ psi. Slab
 $f_c = 1,400$ psi. Substructure, Parapet & Curb
 $f_s = 20,000$ psi. Structural Steel (A-36)
 $f_s = 20,000$ psi. Reinforcement
 $v = 75$ psi. Footings
 $n = 10$

LIVE LOAD DEFLECTION: $\frac{1}{1000}$ Non-composite
 $\frac{1}{1200}$ Composite

LOADING: HS15-44
*Alternate $f'_s = 270,000$ psi. is permitted

CURVE DATA
C. F.A.I. ROUTE 64

P.I. = Sta. 1445+85.05
 $\Delta = 56^\circ 58' 18''$
 $D = 0' 28' 00''$
 $R = 12,277.67'$
 $L = 12,636.79'$
 $T = 6,942.36'$
 $E = 1,826.85'$
 $PC = Sta. 1376+42.69$
 $PT = Sta. 1502+79.48$
 $S.E. = 0.016$ ft/ft



TOTAL BILL OF MATERIAL

Item	Unit	Super	Sub.	Total
Structure Excavation	Cu. Yds.	—	56	56
Furnishing and Erecting Precast Prestressed Concrete I-Beams (36")	Lin. Ft.	359	—	359
Class X Concrete	Cu. Yds.	271.7	260.4	532.1
Protective Coat	Sq. Yds.	1,095	—	1,095
Furnish and Erect Structural Steel	Lump Sum	0.88	—	0.88
Reinforcement Bars	Lbs.	57,880	21,530	79,410
Driving Concrete Piles	Lin. Ft.	—	2,312	2,312
Furnishing Concrete Piles	Lin. Ft.	—	2,312	2,312
Test Piles Concrete	Ea.	—	3	3
Name Plates	Ea.	—	1	1
Slope Wall 4"	Sq. Yds.	—	196	196
Aluminum Railing	Lin. Ft.	498	—	498
Permanent Survey Marker Type J	Ea.	—	1	1
Preformed Joint Sealer	Lin. Ft.	67	—	67
Stud Sheet Connectors	Each	2200	—	2200

* Calculated weight of Structural Steel = 187,790 Pounds

ROUTE NO.	SECTION	COUNTY	TOTAL SHEETS	SHEET NO.
F.A.I. 64	82.14(HB)	ST. CLAIR CLINTON	97	8
FED. ROAD DIV. NO. 1	ILLINOIS	PROJECT 1-64-2(20)		

GENERAL NOTES

COARSE AGGREGATE TO BE USED IN PARAPET HANDRAILS AND END POST MUST BE ABSOLUTELY FREE OF CHERT, FLINT, LIMONITE, LIGNITE AND SOFT SANDSTONE.

THE CONCRETE FLOOR SLAB SHALL BE FINISHED IN ACCORDANCE WITH ARTICLE 504.04 OF THE STANDARD SPECIFICATIONS.

PERMANENT FORMS WILL NOT BE PERMITTED IN FORMING THE CONCRETE FLOOR.

SLOPE WALL SHALL BE REINFORCED WITH WELDED WIRE FABRIC 6" X 6" MESH, WEIGHING 58# PER 100 SQ. FT.

ALL REINFORCEMENT BARS SHALL BE LAPPED 24 DIAMETERS UNLESS OTHERWISE SHOWN.

ALL STRUCTURAL STEEL SHALL CONFORM TO A.S.T.M. SPECIFICATIONS DESIGNATION A-36.

Fasteners shall be HIGH STRENGTH STEEL BOLTS 1/2" OPEN HOLES 13/16" EXCEPT AS NOTED.

HIGH STRENGTH STEEL BOLT CONNECTIONS SHALL BE IN ACCORDANCE WITH ARTICLE 503.04 OF THE STANDARD SPECIFICATIONS.

ANCHOR BOLTS SHALL BE SET BEFORE FASTENING DIAPHRAGMS OVER SUPPORTS.

EXPANSION GUARDS SHALL BE FABRICATED AND ERRECTED IN ACCORDANCE WITH ARTICLE 503.08 (c) OF THE STANDARD SPECIFICATIONS.

The Basic Lead Silico Chromate paint system shall be used for shop and field painting of structural steel.

An alternate strand pattern using Extra High Strength prestressing strand (270 K.S.I.) is permitted.

EXPANSION GUARDS ARE INCLUDED IN THE QUANTITY OF STRUCTURAL STEEL. ESTIMATED WEIGHT 2660 LBS.

CONCRETE PILES AT ABUTMENTS SHALL BE DRIVEN IN HOLES PRECURED THROUGH THE EMBANKMENT IN ACCORDANCE WITH ARTICLE 518.01 (c) OF THE STANDARD SPECIFICATIONS.

THE CONTRACTOR SHALL DRIVE ONE (1) TEST PILE IN A PERMANENT LOCATION AT EACH OF THE FOLLOWING LOCATIONS: SOUTH ABUTMENT, NORTH ABUTMENT, AND PIER.

THE TEST PILE FOR EACH LOCATION MUST BE DRIVEN BEFORE ORDERING THE REMAINDER OF PILES.

EXCAVATION FOR PORTIONS OF STRUCTURES IN THE EMBANKMENTS SHALL NOT BE CLASSIFIED.

FUTURE W.S. 251/SQ. FT.

FIELD BUILDING OF CONSTRUCTION ACCESSORIES TO THE BRIDGE SHALL BE FOR A PERCENTAGE OF 1% OF THE BRIDGE BUILT FROM PIER SURFACES OF THE TOP FLEASERS OF PILES OR OTHERWISE WILL NOT BE PERMITTED. FIELD BUILDING IN OTHER AREAS WILL BE PERMITTED ONLY WHEN APPROVED BY THE ENGINEER.

STATE OF ILLINOIS
DEPARTMENT OF PUBLIC WORKS & BLDGS.
DIVISION OF HIGHWAYS

GENERAL PLAN
C.H.10A OVER F.A.I. ROUTE 64

STATION 1458+82.34

F.A.I. RT. 64 ST. CLAIR & CLINTON CO. SECTION 82.14(HB)

H. W. LOCHNER, INC.
ENGINEERS
CHICAGO, ILLINOIS

SHEET
1 of 16