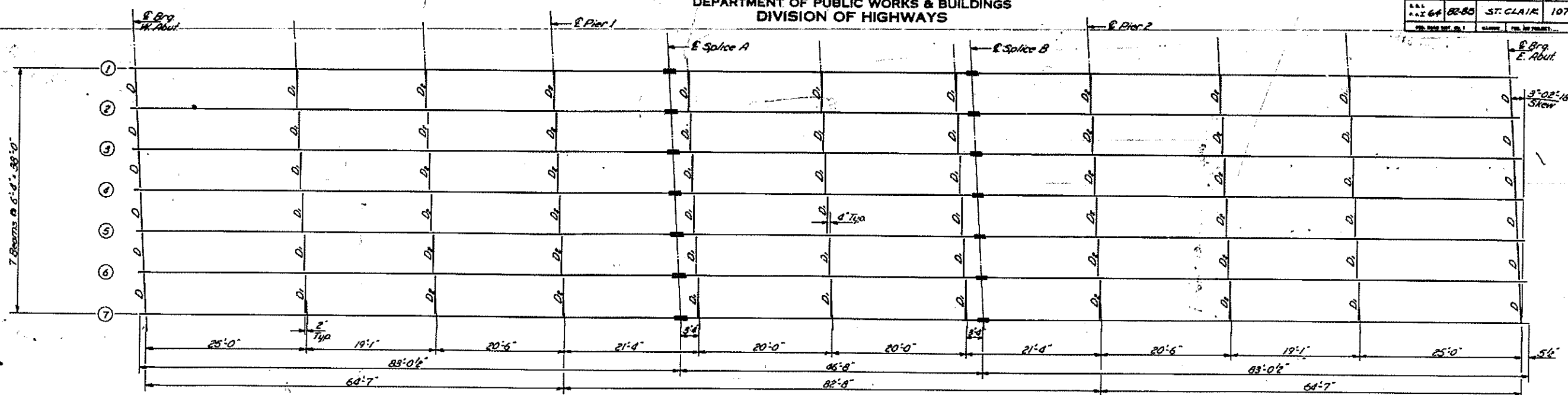
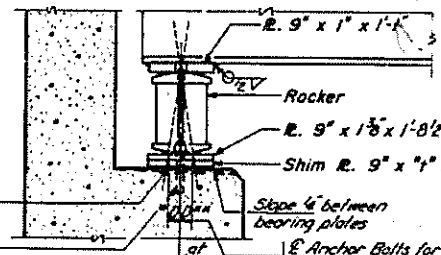


STATE OF ILLINOIS  
DEPARTMENT OF PUBLIC WORKS & BUILDINGS  
DIVISION OF HIGHWAYS

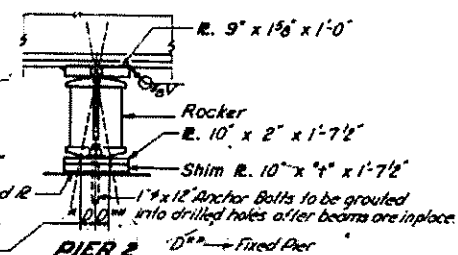
APPRO. NO.	SECTION	COUNTY	TOTAL SHEETS	SHEET NO.
64	82-88	ST. CLAIR	107	65
SHEET NO. 4 9 SHEETS				



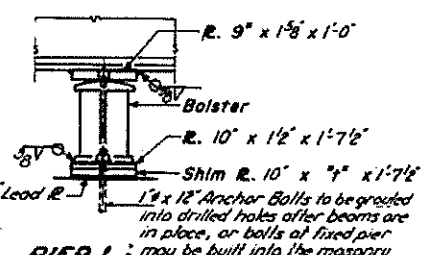
**FRAMING PLAN**  
36 WF 150



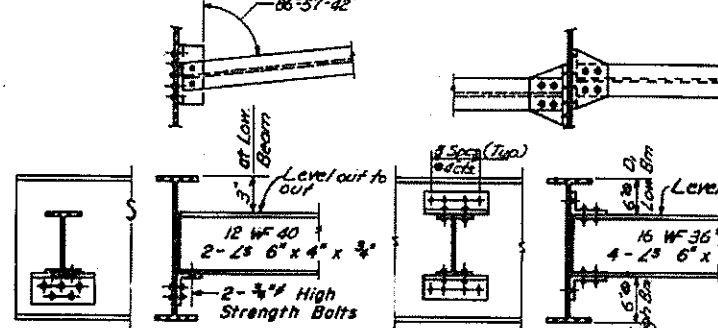
**SECTION AT ABUTMENT**



**PIER 2**  
Fixed Pier



**PIER 1**  
Bolster

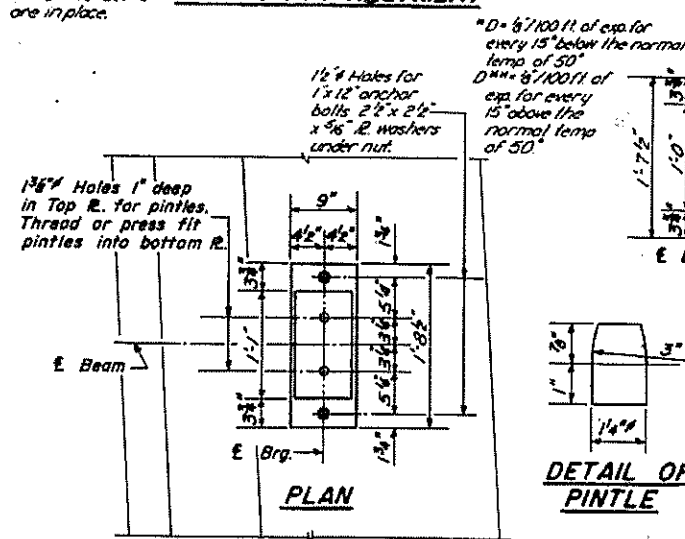


**DIAPHRAGM D**  
12 Required

**DIAPHRAGM D1 & D2**  
30 Required D1, 24 Required D2

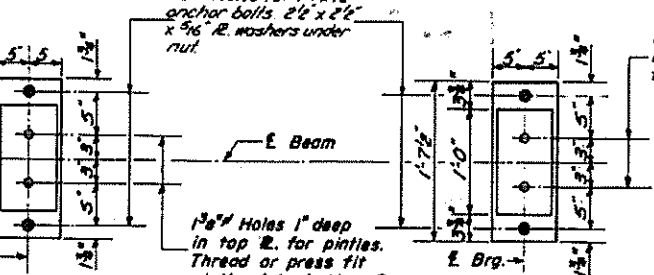
**TABLE OF 'F' DIMENSIONS**

Loc.	1	2	3	4	5	6	7
E. Brg. W. Abut.	38'	12'	12'				
E. Pier 1	38'	12'	12'				
E. Pier 2	38'	12'	12'				
E. Brg. E. Abut.	38'	12'	12'				

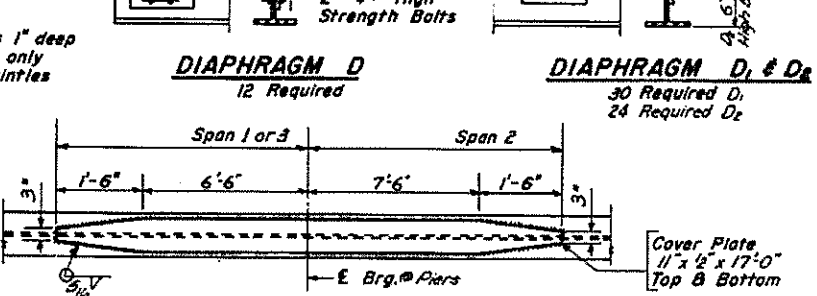


**PLAN**

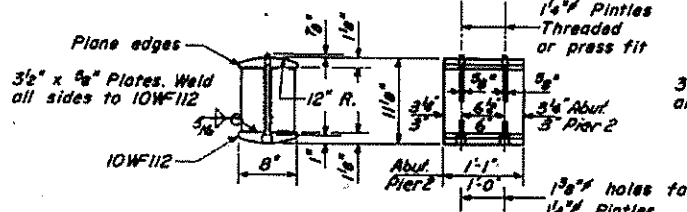
**DETAIL OF PINTLE**



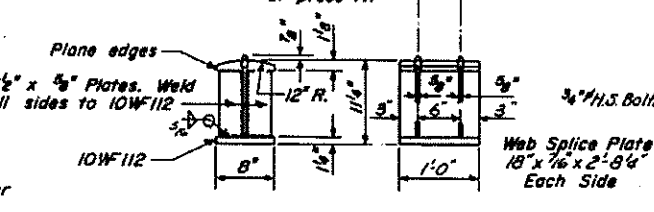
**PLAN**



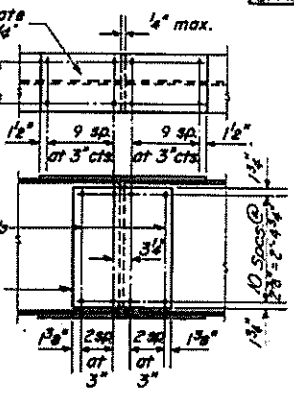
**DETAIL OF COVER PLATE**



**DETAIL OF ROCKER AT ABUT. & PIER 2**



**DETAIL OF BOLSTER AT PIER 1**



**DETAIL OF SPLICE**

**ELEVATION TOP OF WF**

Loc.	1	2	3	4	5	6	7
E. Brg. W. Abut.	436.46	436.59	436.69	436.68	436.64	436.52	436.39
E. Pier 1	436.61	436.74	436.83	436.83	436.79	436.67	436.54
E. Splice A	436.65	436.78	436.87	436.87	436.83	436.71	436.58
E. Splice B	436.79	436.92	437.01	437.01	436.97	436.85	436.72
E. Pier 2	436.85	436.98	437.07	437.07	437.03	436.91	436.78
E. Brg. E. Abut.	437.07	437.20	437.29	437.29	437.25	437.13	437.00

Note: Diaphragm connections may be adapted to shop welding subject to approval by the Engineer.

**STRUCTURAL STEEL**  
F.A.T. RT. 64 - SEC. 82-88  
ST. CLAIR COUNTY  
STA. 1062+36

DESIGNED: *Walsh Perry*  
CHECKED: *R. Bradford Jr.*  
DRAWN: *L. Horvath Jr., W.A. Sausman Jr.*  
EXAMINED: *McPherson*  
APPROVED: *V. J. [Signature]*

I-2-C 7-2-62 Rev. 11-9-62 Rev. 8-16-63