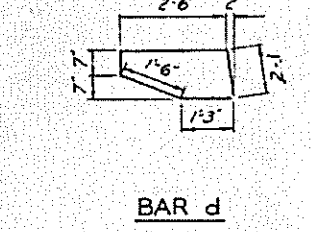
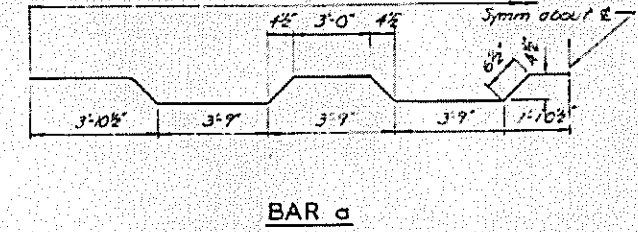
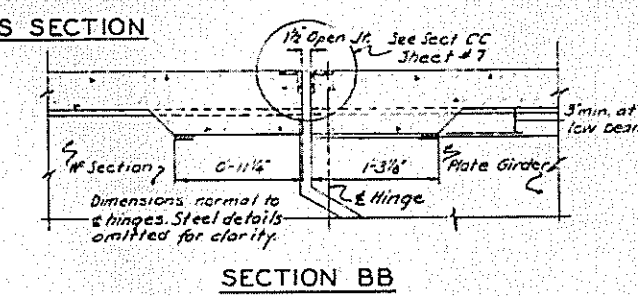
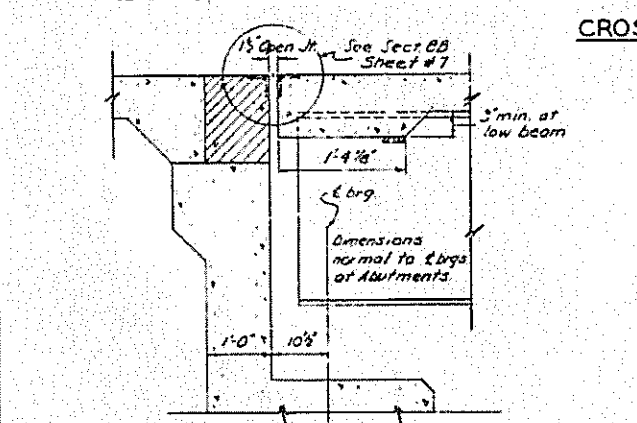
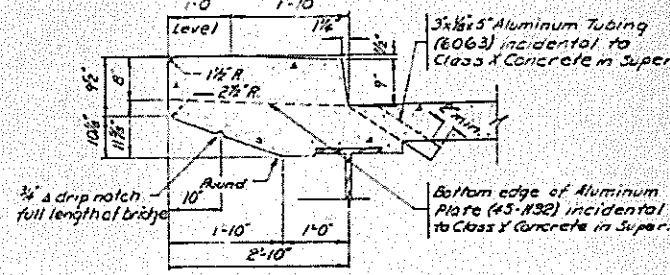
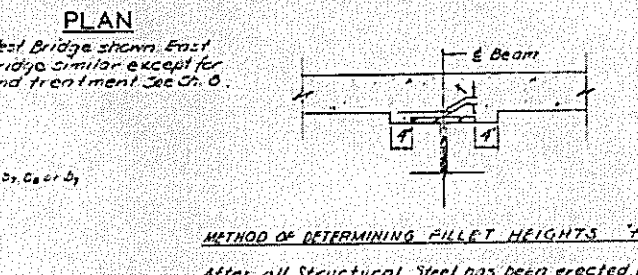
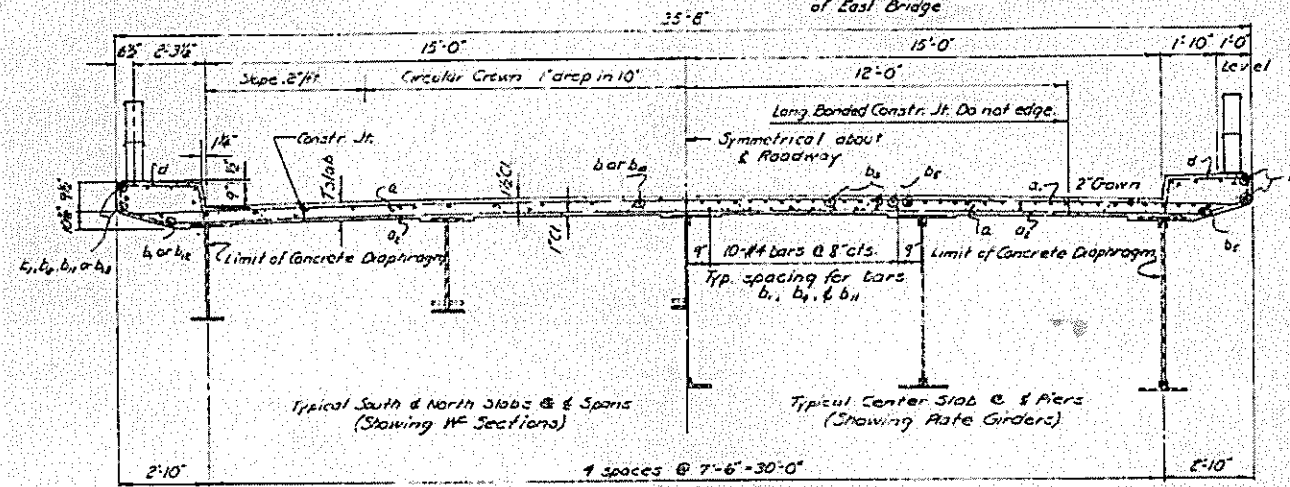
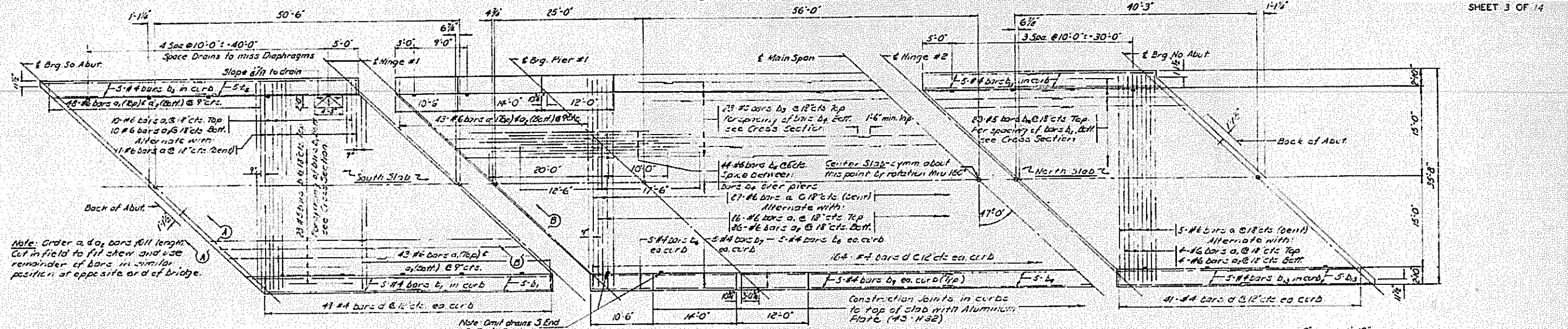


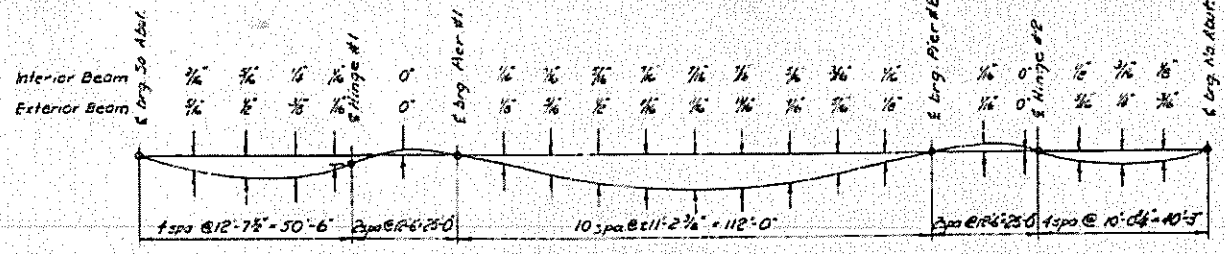
FOR INFORMATION ONLY

ROUTE NO.	SECTION	COUNTY	TOTAL SHEETS	SHEET NO.
FAI 7	60-7HB-2	Madison	25	6
PROJECT				
SHEET 3 OF 14				



SUPERSTRUCTURE BILL OF MATERIAL

BAR	NO.	SIZE	LENGTH	SHAPE
a	200	#6	33'-4"	
a	148	#6	34'-0"	
a1	44	#6	38'-0"	
b	92	#5	26'-5"	
b1	184	#4	28'-3"	
b2	20	#4	27'-3"	
b3	332	#5	24'-6"	
b4	338	#2	24'-6"	
b5	176	#6	30'-0"	
b6	40	#4	10'-3"	
b7	40	#4	11'-9"	
b8	40	#4	23'-6"	
b9	92	#5	21'-0"	
b10	184	#4	21'-0"	
b11	20	#4	22'-0"	
d	1016	#2	7'-0"	
Class I Concrete C-750 491				
Reinforcement Bars lbs. 101,180				
Structural Steel 102 769,990				



DESIGNED	MJR	APPROVED	APR 15 1957
CHECKED	V.F.S.	APPROVED	
DRAWN	goc	APPROVED	
CHECKED	M.J.R.	APPROVED	

SUPERSTRUCTURE
F.A.I. OVER U.S. RT. 40
PROJECT
F.A.I. ROUTE 7 SECTION 60-7HB-2-F
MADISON COUNTY
STATION 544 + 31.73