

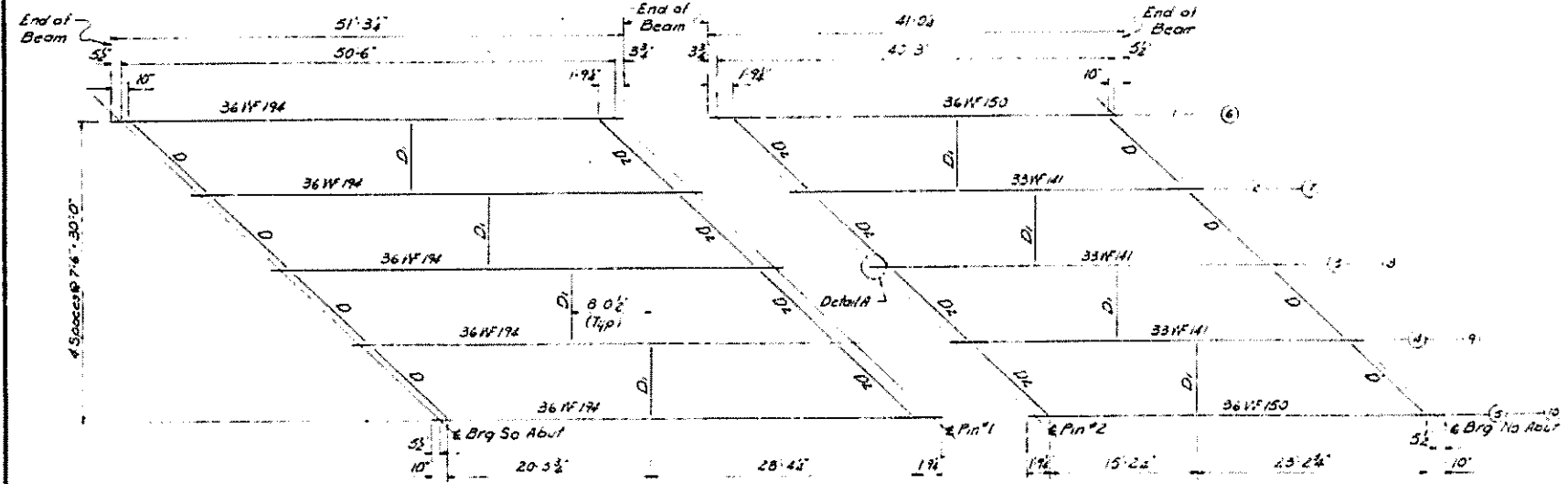
FOR INFORMATION ONLY

STATE OF ILLINOIS
DEPARTMENT OF PUBLIC WORKS & BUILDINGS
DIVISION OF HIGHWAYS

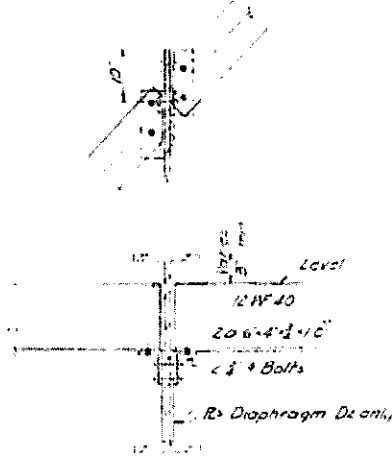
FAI-70

ROUTE NO.	SEC.	COUNTY	TOTAL SHEETS	SHEET NO.
FAI-7	60-7HB-2	Madison	25	9
FED. ROAD DIST. NO. 11 ILLINOIS PROJECT			12	9

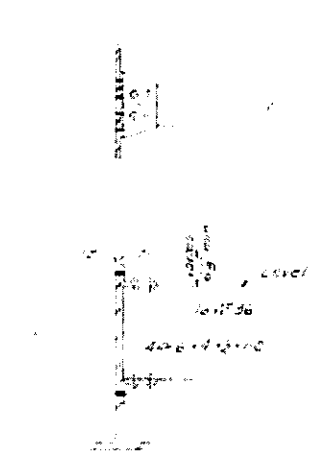
SHEET 6 OF 14



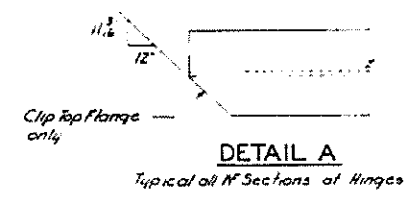
FRAMING PLAN



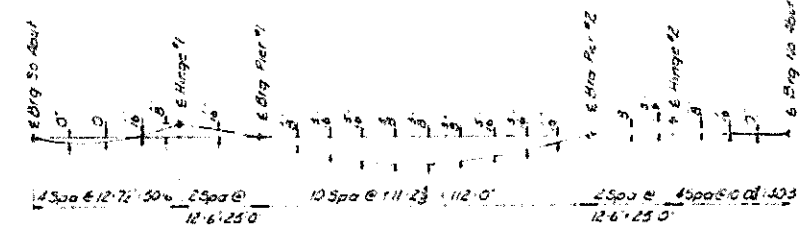
DIAPHRAGMS D & D2



DIAPHRAGM D1



DETAIL A
Typical all W Sections at Hinges

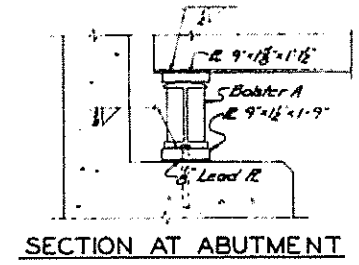


DEAD LOAD DEFLECTION DIAGRAM
Structural Steel Only

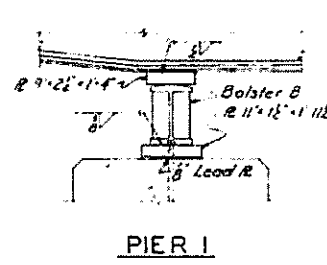
TABLE OF ELEVATIONS

Sta.	6' Brg. No. Abut.	6' Hinge & Brg. No. 1	6' Hinge & Brg. No. 2	6' Hinge & Brg. No. 3	6' Hinge & Brg. No. 4	6' Hinge & Brg. No. 5	6' Hinge & Brg. No. 6	6' Hinge & Brg. No. 7	6' Hinge & Brg. No. 8	6' Hinge & Brg. No. 9	6' Hinge & Brg. No. 10
1	478.82	478.91	479.12	479.12	479.29	479.26	479.22	479.07	479.71	479.53	480.10
2	478.77	478.74	478.25	478.25	478.52	478.71	478.53	480.10	479.07	479.71	479.53
3	479.07	479.15	479.21	479.21	479.58	479.70	479.79	479.94	480.10	480.10	480.10
4	479.06	479.15	479.26	479.26	479.52	479.69	479.79	479.94	480.10	480.10	480.10
5	478.98	479.06	479.18	479.27	479.41	479.61	479.75	479.82	480.10	480.10	480.10
6	479.05	479.25	479.25	479.25	479.41	479.73	479.87	479.94	480.10	480.10	480.10
7	479.21	479.21	479.21	479.21	479.41	479.71	480.23	480.23	480.10	480.10	480.10
8	479.29	479.41	479.51	479.62	479.75	480.02	480.11	480.23	480.10	480.10	480.10
9	479.28	479.41	479.51	479.62	479.75	480.02	480.11	480.23	480.10	480.10	480.10
10	479.20	479.36	479.50	479.59	479.76	479.92	480.02	480.10	480.10	480.10	480.10

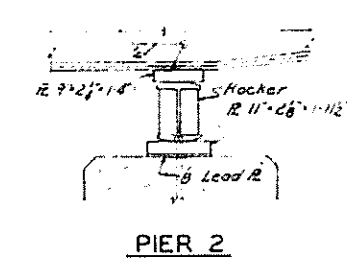
Note: Elevations of 6' Brigs Abuts are measured at the top of the W sections. All other elevations are measured at the back of the top flange angles.



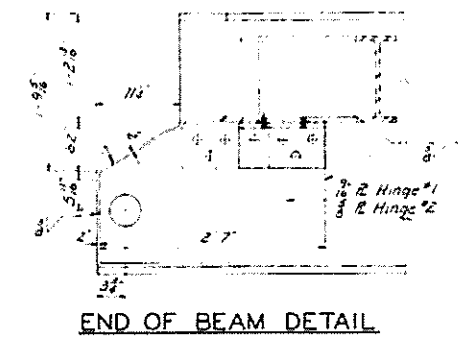
SECTION AT ABUTMENT



PIER 1

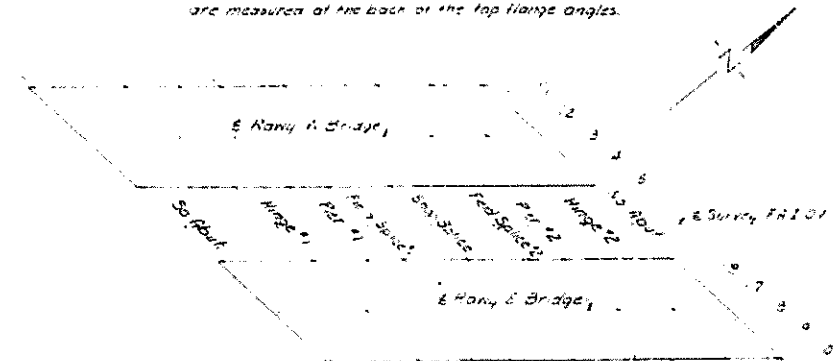


PIER 2

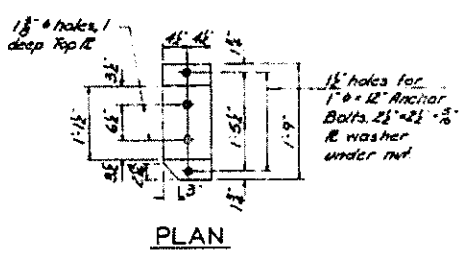


END OF BEAM DETAIL

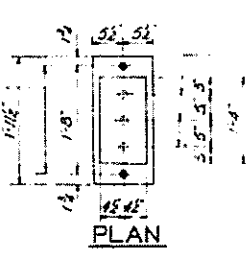
Estimated weight of Bearings = 14,800 lbs



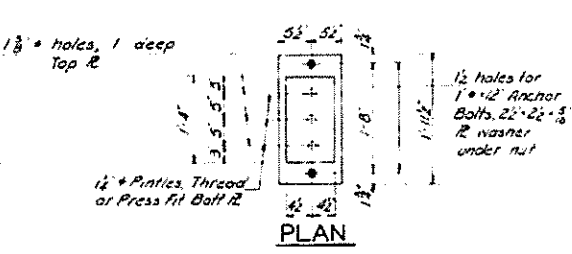
ORIENTATION SKETCH



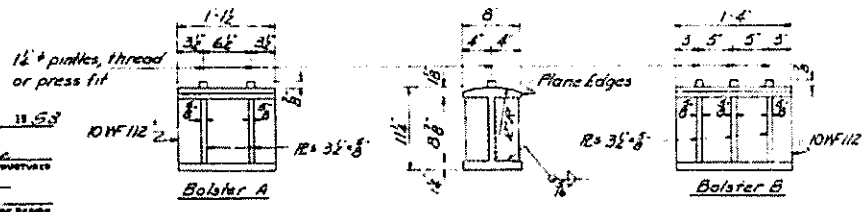
PLAN



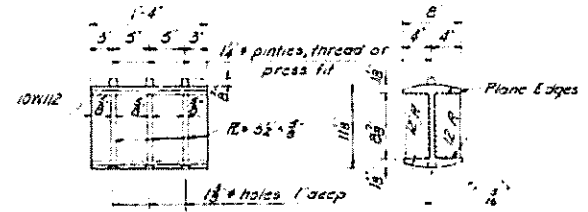
PLAN



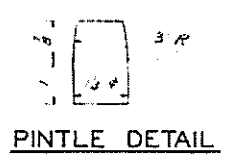
PLAN



BOLSTER DETAIL



ROCKER DETAIL



PINTLE DETAIL

STRUCTURAL STEEL DETAILS
F.A.I. OVER U.S. RT. 40
PROJECT
F.A.I. ROUTE 7 SECTION 60-7HB-2-F
MADISON COUNTY
STATION 544 + 31.73

DESIGNED: M.J.R.	EXAMINED: [Signature]
CHECKED: V.F.S.	DESIGNED BY: [Signature]
DRAWN: D.J.M.	APPROVED: [Signature]
CHECKED: R.D.C.	DATE: April 13, 1953