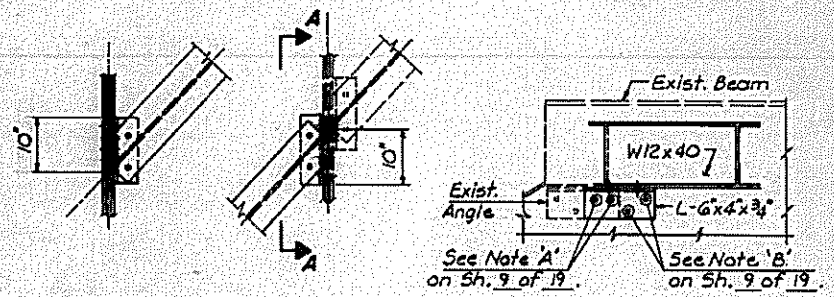
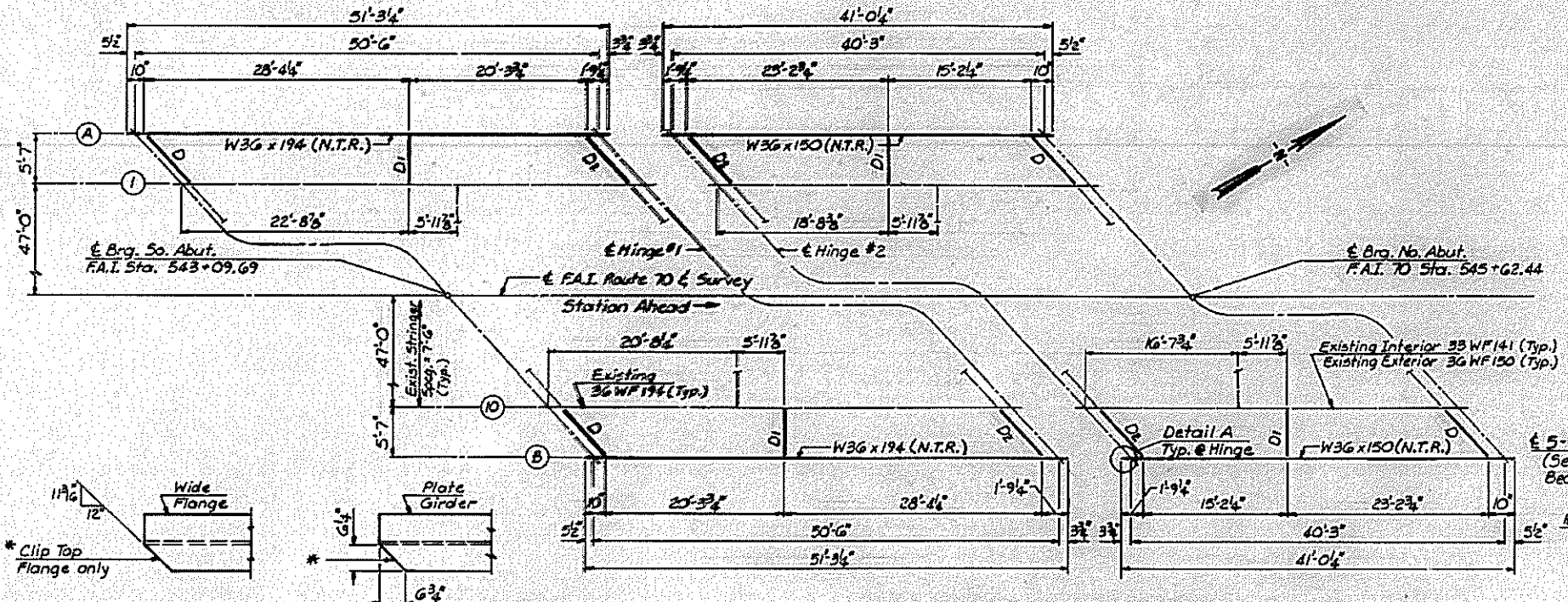


FOR INFORMATION ONLY

NO. 10	NO. 11	NO. 12	NO. 13	NO. 14	NO. 15
FAI. 70	Madison	61	48		



PARTIAL FRAMING PLAN - 2 BRIDGES
N.T.R. Indicates Notch Toughness Requirements.

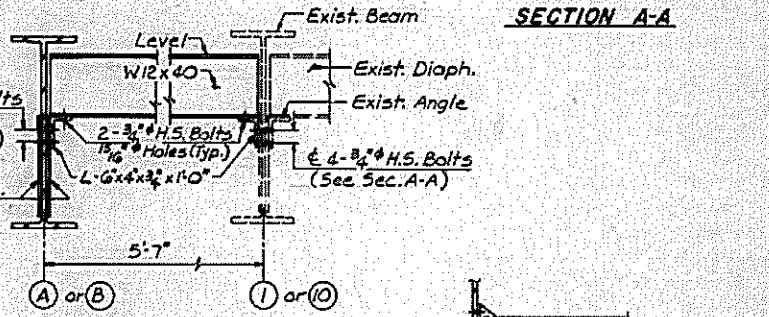


TABLE OF ELEVATIONS ① (For Fabrication Only)

	€ Brg. So. Abut.	€ Hinge #1	€ Brg. Pier #1	€ Splice #1	€ Splice #2	€ Brg. Pier #2	€ Hinge #2	€ Brg. No. Abut.
Stringer A	478.86	478.71	478.84	478.94	479.30	479.41	479.53	479.81
Stringer B	479.10	479.28	479.41	479.51	479.87	479.98	480.10	480.38

① - Elevations at the € brg. of the abutments are given at the top of the wide flange sections; all other elevations are given at the top of the girder web.

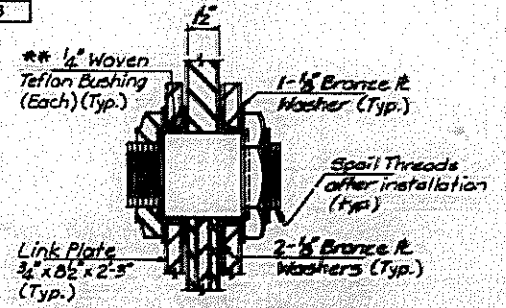
INTERIOR STRINGER MOMENT TABLE ②

	33 Sp. 1 ③	Pier 1	52 Sp. 2 ④	Pier 2	49 Sp. 3 ⑤
I_s (in ⁴)	12,100	62,620	62,620	54,457	9,040
S_s (in ³)	664	1,890	1,890	1,657	504
Q (ft)	1.25	1.30	1.30	1.30	1.20
M_Q (1-R)	599	1,195	961	1,016	243
M_Q (1-L)	428	998	1,185	959	306
M_{imp} (1-R)	120	230	249	221	92
M_{TOTAL}	947	2,425	2,395	2,196	641
f_s	17.1	15.4	15.2	15.9	15.3

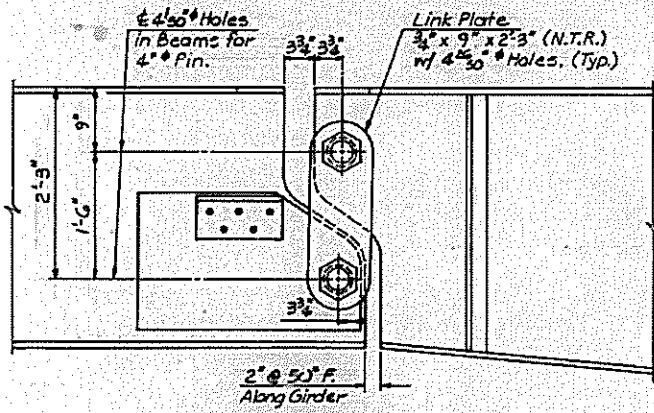
INTERIOR STRINGER REACTION TABLE ②

	So. Abut.	Pier 1	Pier 2	No. Abut.
R_Q (k)	32	139	128	24
R_k (k)	40	56	56	38
Imp (k)	11	13	13	11
R_{TOTAL} (k)	83	208	197	73

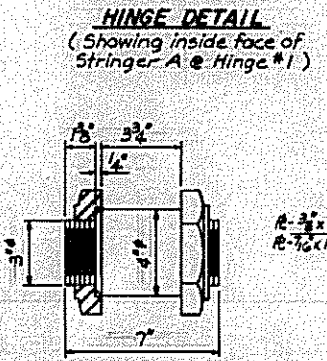
② - The new stringer was designed as if it were a typical interior stringer.
 ③ - Midspan between € brg. abut. & € hinge.
 ④ - Point of maximum moment in span 2.
 ⑤ - I_s and S_s are the moment of inertia and section modulus of the steel section used in computing f_s total.



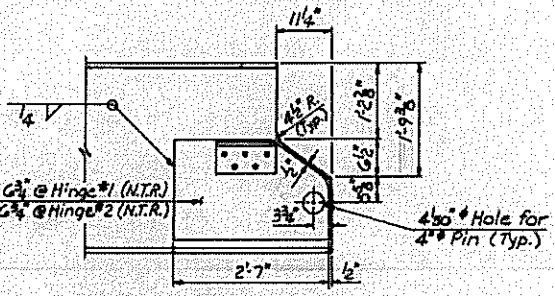
PARTIAL SECTION THRU HINGE
 ** Self lubricating filament wound epoxy matrix backed Duralon bearing or metal backed Fiber Glide bearing or equivalent. Cast incidental to Structural Steel.



LINK PLATE DETAIL

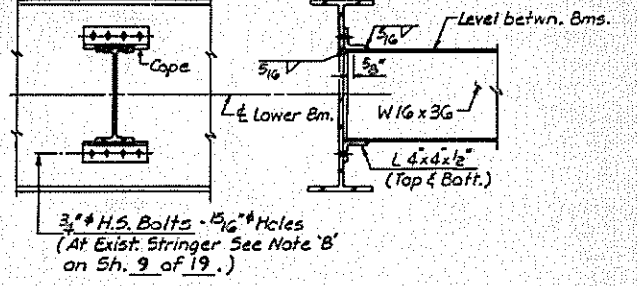


DETAIL OF PIN
Pin shall be case hardened. (See Std. Specs.)



END OF BEAM DETAIL

Note: 2-Hardened washers shall be required over all 1 1/16" holes in diaphragm connections.



DIAPHRAGM D1

STRUCTURAL STEEL - SPANS 1 & 3
FAI. RTE. 70 OVER COLLINSVILLE BELTLINE
SECTION 60-7HBR-2
MADISON COUNTY
STA. 544+31.73

T.E.H.		8451062
W.D.L.		5/5/86
D.A.N.		
T.E.H.		