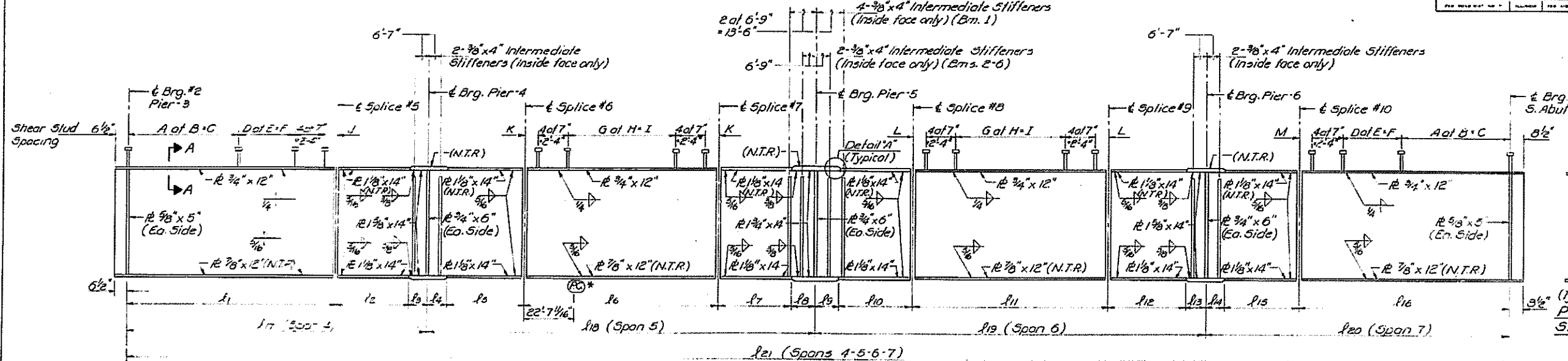


FOR INFORMATION ONLY

STATE OF ILLINOIS  
DEPARTMENT OF TRANSPORTATION

DATE	SECTION	COUNTY	TOTAL SHEETS	SHEET NO.
1981	82-7HB	St. Clair	83	52
SHEET NO. 52 69 SHEETS				



**GIRDER ELEVATIONS**  
UNIT #2-RAMP-E (SPANS 4-5-6-7)  
(SHOWING BEAMS 1 THRU 6)  
54" x 1/2" web (N.T.R.)

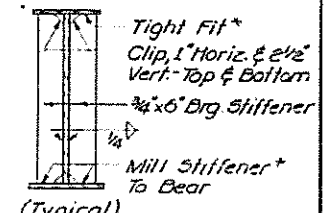
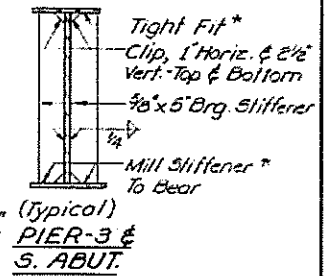
Note:  
N.T.R. denotes steel that must conform to the Supplemental Requirements for Notch Toughness (Zone 2)  
All girder components shall be AASHTO M223 Grade 50

Beam	l1	l2	l3	l4	l5	l6	l7	l8	l9	l10	l11	l12	l13	l14	l15	l16	l17	l18	l19	l20	l21	* Radius
1	80'-2"	27'-5 1/2"	6'-10 1/2"	7'-3 3/4"	29'-1 3/4"	73'-0 3/4"	27'-11 1/2"	8'-10"	8'-10"	27'-11 3/8"	73'-7"	29'-5 3/4"	7'-2 3/8"	6'-10 1/2"	27'-7 3/8"	80'-5 3/8"	114'-6"	146'-11 3/8"	147'-2 1/4"	114'-11 3/4"	523'-7 3/8"	1917.776
2	80'-2"	27'-5 1/2"	6'-10 1/2"	7'-3 3/4"	29'-1 3/4"	73'-0 3/4"	27'-10 1/4"	8'-9 5/8"	8'-9 5/8"	27'-10 1/4"	73'-4"	29'-3 3/8"	7'-4"	6'-10 1/2"	27'-5 3/8"	80'-2 1/8"	114'-6"	146'-7 3/8"	146'-7 3/8"	114'-6 1/2"	522'-3 3/8"	1910.609
3	80'-2"	27'-5 1/2"	6'-10 1/2"	7'-3 3/4"	29'-1 3/4"	73'-3 3/4"	27'-9 1/8"	8'-9 1/8"	8'-9 1/8"	27'-9 1/8"	73'-0 5/8"	29'-2 3/8"	7'-3 3/8"	6'-10 1/2"	27'-4 3/8"	79'-10 1/2"	114'-6"	146'-3 1/2"	146'-1 1/8"	114'-1 3/8"	521'-0"	1903.442
4	80'-2"	27'-5 1/2"	6'-10 1/2"	7'-3 3/4"	29'-1 3/4"	73'-1 3/8"	27'-7 3/8"	8'-8 3/4"	8'-8 3/4"	27'-7 3/8"	72'-9 1/4"	29'-1 1/4"	7'-3 3/8"	6'-9 3/4"	27'-3 1/8"	79'-7"	114'-6"	145'-11 1/2"	145'-6 1/2"	113'-8 1/4"	519'-8 1/4"	1896.275
5	80'-2"	27'-5 1/2"	6'-10 1/2"	7'-3 3/4"	29'-1 3/4"	72'-11 1/8"	27'-6 3/8"	8'-8 3/8"	8'-8 3/8"	27'-6 3/8"	72'-5 3/8"	29'-0"	7'-3"	6'-9 3/8"	27'-2 3/8"	79'-3 3/8"	114'-6"	145'-7 3/8"	144'-11 3/8"	113'-3 3/8"	518'-4 3/8"	1889.108
6	80'-2"	27'-5 1/2"	6'-10 1/2"	7'-3 3/4"	29'-1 3/4"	72'-8 3/4"	27'-5 3/8"	8'-8"	8'-8"	27'-5 3/8"	72'-2 1/2"	29'-10 1/4"	7'-2 3/8"	6'-9 1/4"	27'-0 3/8"	78'-11 3/4"	114'-6"	145'-3 3/8"	144'-5 1/4"	112'-9 3/8"	517'-0 3/4"	1881.941

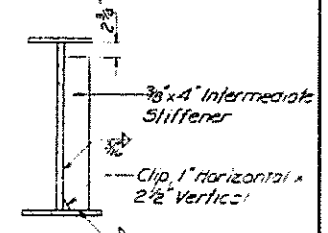
**LENGTHS ALONG & OF GIRDER**  
UNIT #2 RAMP-E

Beam	A	B	C	D	E	F	G	H	I	J	K	L	M
1	31	17"	43'-11"	27	14"	31'-6"	52	15"	65'-0"	2'-5"	2'-0 3/8"	1'-11 1/2"	2'-8 3/8"
2	31	17"	43'-11"	27	14"	31'-6"	52	15"	65'-0"	2'-5"	1'-11"	1'-10"	2'-5 1/2"
3	31	17"	43'-11"	27	14"	31'-6"	52	15"	65'-0"	2'-5"	1'-5 3/8"	1'-8 3/8"	2'-1 1/2"
4	31	17"	43'-11"	27	14"	31'-6"	52	15"	65'-0"	2'-5"	1'-8 1/2"	1'-6 3/8"	1'-10"
5	31	17"	43'-11"	27	14"	31'-6"	52	15"	65'-0"	2'-5"	1'-7 3/8"	1'-4 1/2"	1'-6 3/8"
6	30	17"	42'-6"	28	14"	32'-8"	51	15"	63'-9"	2'-8"	2'-1 3/8"	1'-10 1/4"	1'-5 3/4"

**SHEAR STUD SPACES**



**PIERS 4-5-6**  
\* Except as noted on Sht. #45



**INTERMEDIATE STIFFENER DETAIL**

**TABLE OF 'w' DIMENSIONS**

Flange Thickness	'w'
To 1 1/2"	3/16"
To 2 1/4"	3/8"

Note: See Sheet #42 for Detail A' and Section A-A

DESIGNED: Rick Brunette  
CHECKED: DAN KRULL  
DRAWN: S.G. FERCHOW  
CHECKED: DK

EXAMINED: [Signature]  
PASSED: [Signature]  
APPROVED: [Signature]

DATE: May 7 1981

**UNIT #2 RAMP-E**  
**STRUCTURAL STEEL**  
SPANS 4 THRU 7  
F.A.I. RT. 270 SEC. 82-7HB  
ST. CLAIR COUNTY  
STATION 343+61.11