

STATE OF ILLINOIS
DEPARTMENT OF TRANSPORTATION
DIVISION OF HIGHWAYS

**PROPOSED
HIGHWAY PLANS**

FAI ROUTE 255 / FAI ROUTE 55 / 70 (I-255 / I-55/70)
SECTION 82-7HB-P, 60-7HB-P

BRIDGE PAINTING IL 3 OVER I-255,
I-55/70 OVER BELTLINE ROAD
ST CLAIR, MADISON COUNTY

C-98-065-13

FAI RTE.	SECTION	COUNTY	TOTAL SHEETS	SHEET NO.
55/55/70	82-7HB-P, 60-7HB-P	ST CLAIR, MADISON	25	1
ILLINOIS			CONTRACT NO. 76G64	

FOR INDEX OF SHEETS, SEE SHEET NO. 2

IL 3 OVER I-255
ONLY 2 OF THE 4 RAMP
2008 ADT: 5800 (ACTUAL)
2014 ADT: 6100 (ESTIMATED)
SU: 1.9% MU: 2.8%

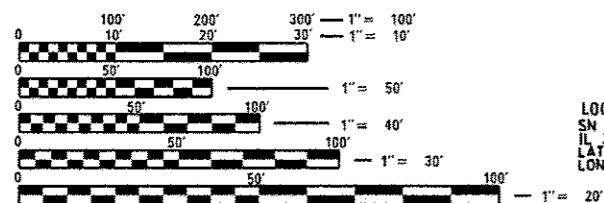
IL 3 OVER I-255
2013 ADT: 40900 (ACTUAL)
2014 ADT: 41500 (ESTIMATED)
SU: 20% MU: 11.2%

I-55/70 OVER BELTLINE RD
2013 ADT: 43100 (ACTUAL)
2014 ADT: 43500 (ESTIMATED)
SU: 2.3% MU: 17.4%

BELTLINE RD
2011 ADT: 21300 (ACTUAL)
2014 ADT: 27900 (ESTIMATED)
SU: 2.3% MU: 17.4%

LOCATION 1
SN 060-0014, 0015
I-25/70 OVER BELTLINE RD
LAT: 38°41'13.81"
LONG: 90°00'17.04"

LOCATION 2
SN 082-0217, 0218
IL 3 OVER I-255
LAT: 38°51'46.45"
LONG: 90°11'46.77"

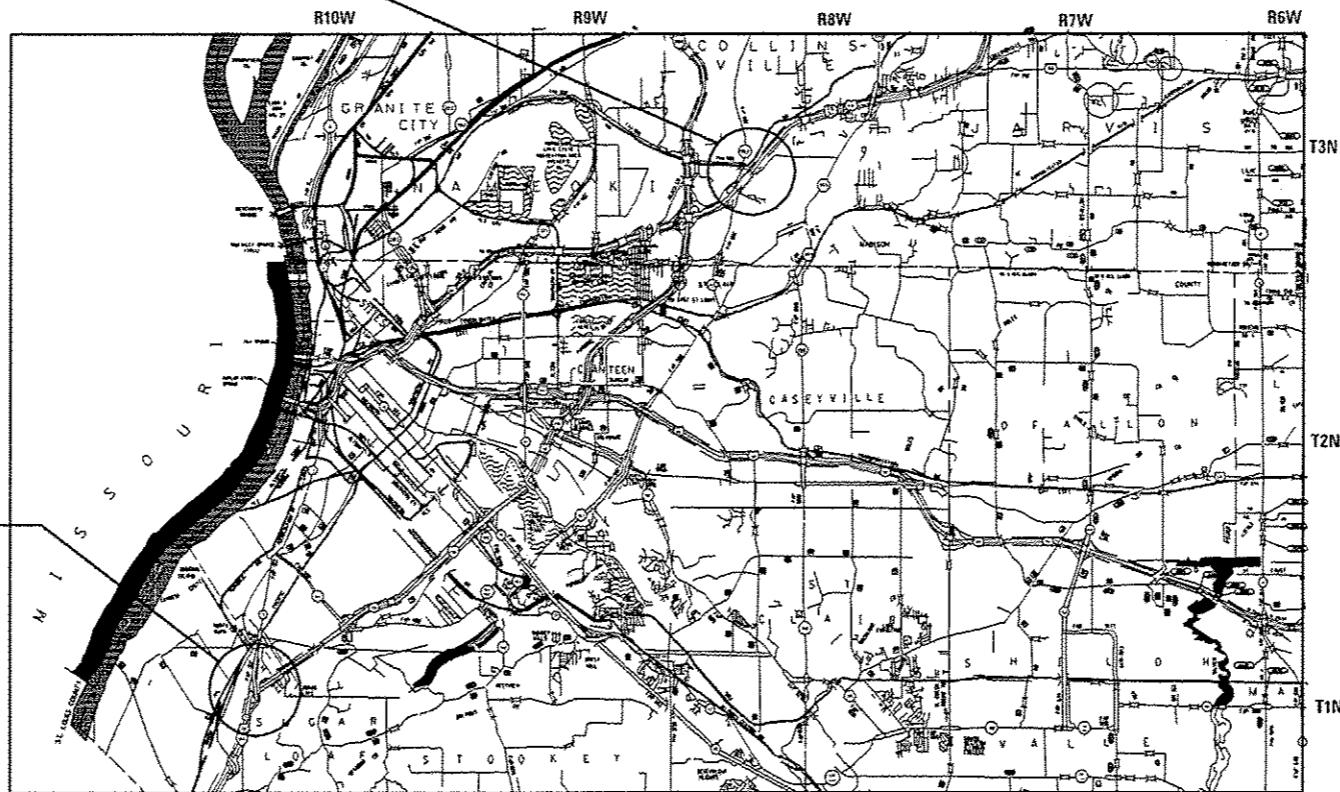


FULL SIZE PLANS HAVE BEEN PREPARED USING STANDARD ENGINEERING SCALES. REDUCED SIZED PLANS WILL NOT CONFORM TO STANDARD SCALES. IN MAKING MEASUREMENTS ON REDUCED PLANS, THE ABOVE SCALES MAY BE USED.

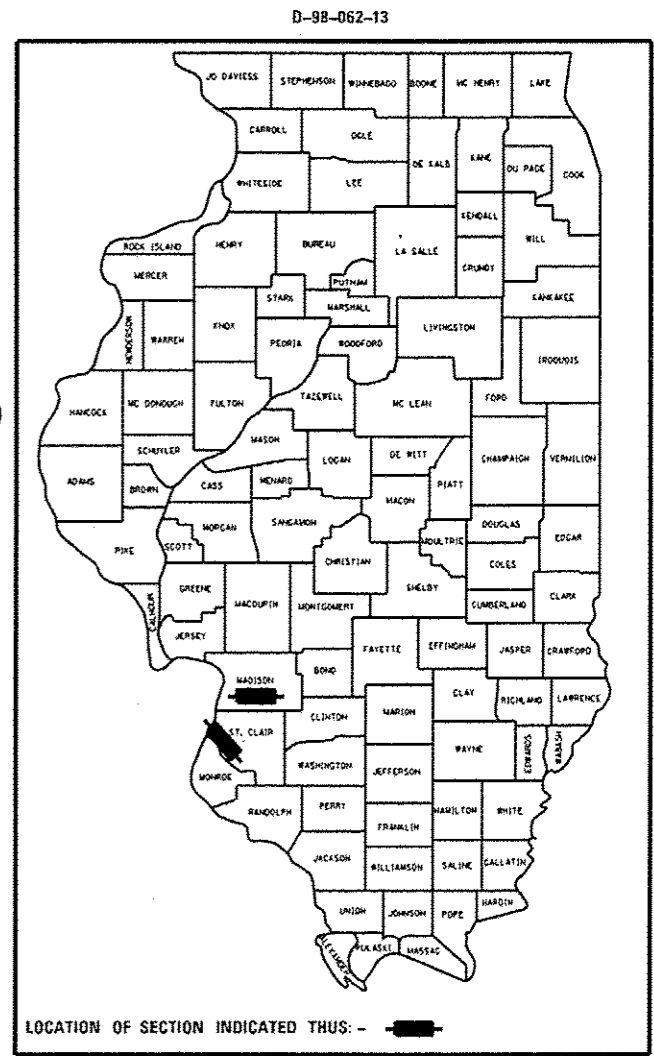
J.U.L.I.E.
JOINT UTILITY LOCATION INFORMATION FOR EXCAVATION
1-800-892-0123
OR 811

PROJECT ENGINEER: TIM PADGETT (618) 341-3325
PROJECT MANAGER: PHIL COPPERNOLL (618) 346-3480

CONTRACT NO. 76G64



GROSS LENGTH = 1320 FT. = 0.25 MILE
NET LENGTH = 1320 FT. = 0.25 MILE



STATE OF ILLINOIS
DEPARTMENT OF TRANSPORTATION
DIVISION OF HIGHWAYS

SUBMITTED Feb 5 2014
Jeffrey Z. Krueger
DEPUTY DIRECTOR OF HIGHWAYS, REGION ENGINEER

March 21 2014
John D. Baranzelli, P.E.
ENGINEER OF DESIGN AND ENVIRONMENT

March 21 2014
Omer Osman, P.E.
DIRECTOR OF HIGHWAYS, CHIEF ENGINEER

PRINTED BY THE AUTHORITY
OF THE STATE OF ILLINOIS