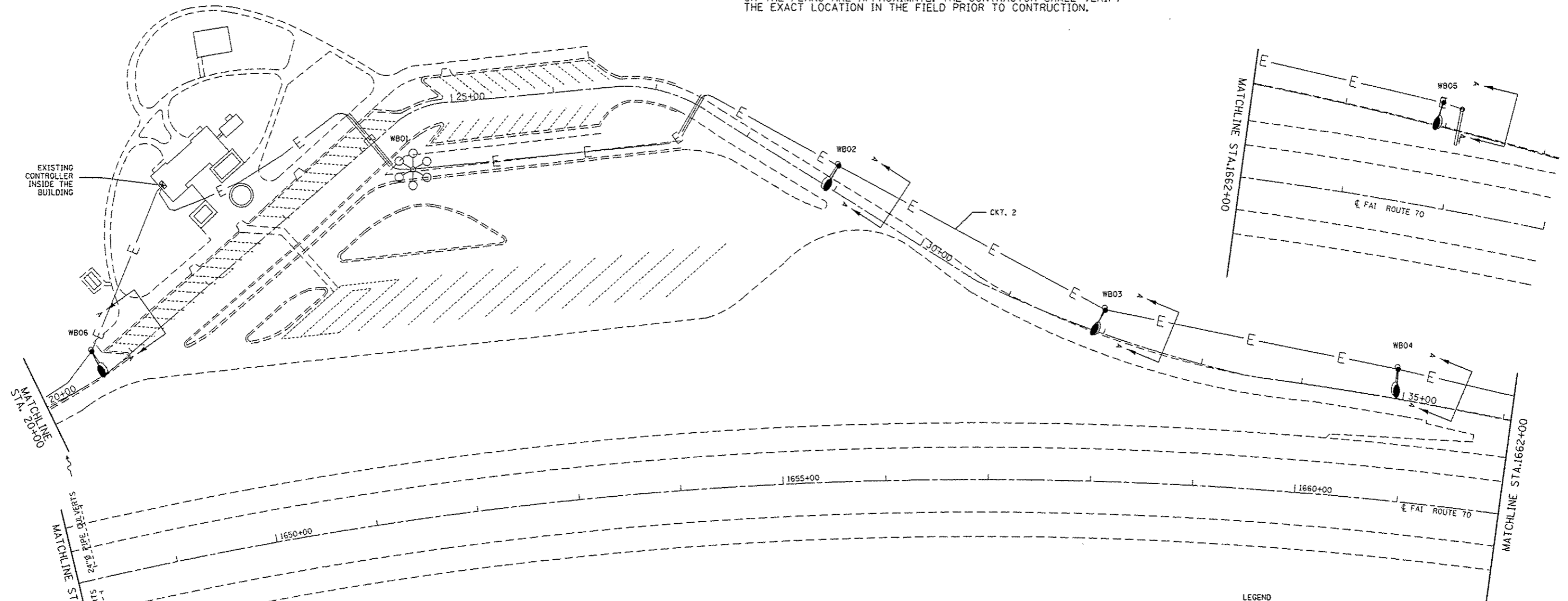


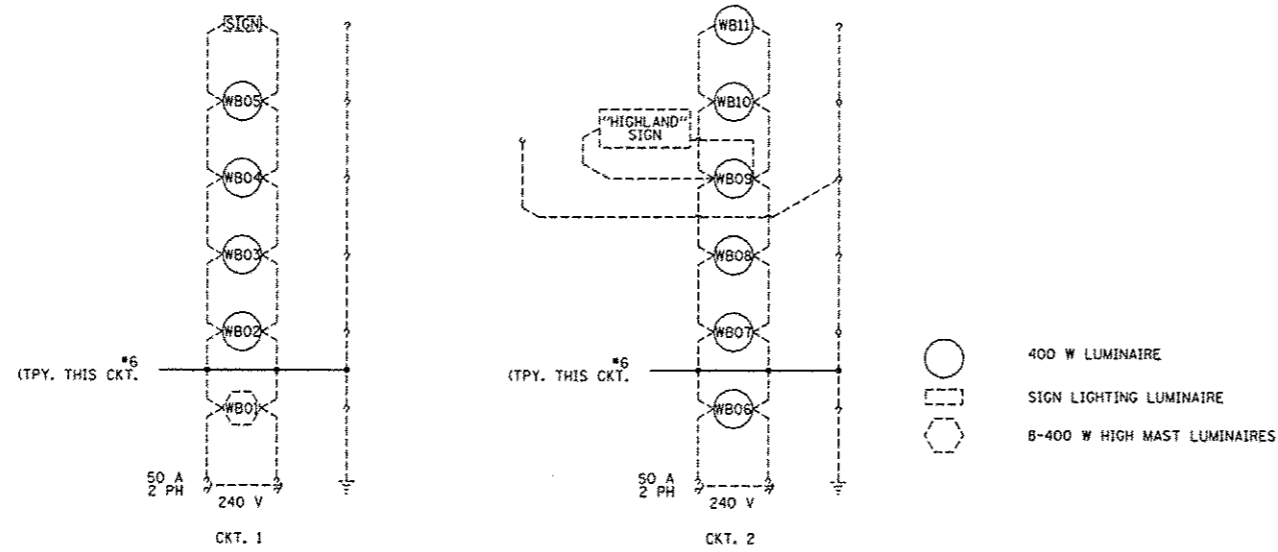
GENERAL LIGHTING NOTES

1. THE LOCATIONS OF EXISTING LIGHTING UNITS AND DUCTS AS SHOWN ON THE PLANS ARE APPROXIMATE. THE CONTRACTOR SHALL VERIFY THE EXACT LOCATION IN THE FIELD PRIOR TO CONSTRUCTION.

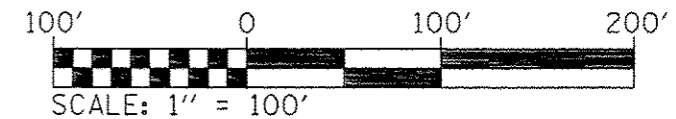


LEGEND

- EXISTING HIGH MAST TOWER TO REMAIN
- EXISTING LIGHTING UNIT TO BE REMOVED
- EXISTING LIGHTING CONTROLLER
- EXISTING SIGN STRUCTURE
- EXISTING UNIT DUCT
- PROPOSED LIGHTING UNIT, SOFT ALUMINUM POLE, 15FT MAST ARM, W/ 400W HPS LUMINAIRE, MC2 AND W/ NEW BREAKAWAY COUPLINGS (UNLESS NOTED OTHERWISE)



WIRING DIAGRAMS



FILE NAME =	USER NAME = prestonm	DESIGNED -	REVISED -
c:\pwork\pwork\prestonm\108352384\1216677-shl-light.dgn		DRAWN -	REVISED -
		CHECKED -	REVISED -
		DATE -	REVISED -

STATE OF ILLINOIS  
DEPARTMENT OF TRANSPORTATION

SILVER LAKE REST AREA  
WB LIGHTING REPLACEMENT PLAN 2 OF 2

SCALE: SHEET NO. OF SHEETS STA. TO STA.

F.A.I. RTE.	SECTION	COUNTY	TOTAL SHEETS	SHEET NO.
70	60-13-RA-L	MADISON	6	6
CONTRACT NO. 76677				
ILLINOIS FED. AID PROJECT				