

GENERAL NOTES

Reinforcement bars designated (E) shall be epoxy coated.

Plan dimensions and details relative to existing plans are subject to nominal construction variations. The Contractor shall field verify existing dimensions and details affecting new construction and make necessary approved adjustments prior to construction or ordering of materials. Such variations shall not be cause for additional compensation for a change in scope of the work, however, the Contractor will be paid for the quantity actually furnished at the unit price bid for the work.

Existing reinforcement bars extending into removal area shall be cleaned, straightened and incorporated into the new construction. Any reinforcement bars that are damaged during concrete removal shall be replaced with an approved bar splicer or anchorage system. Cost included with Concrete Removal.

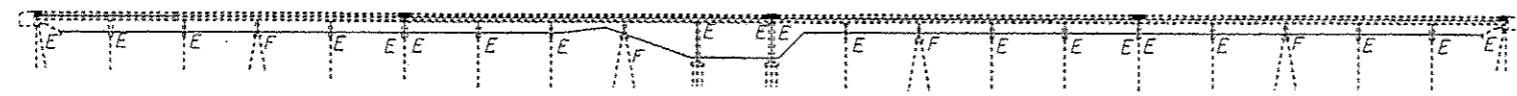
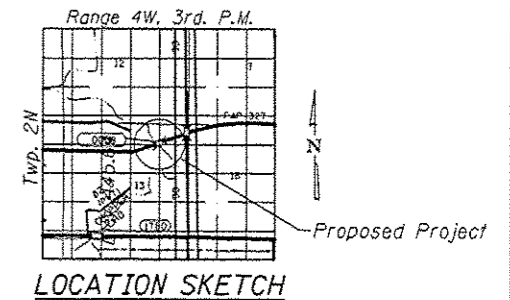
The deck surface shall have its final finish surface tined according to Article 420.09(e)1 of the Standard Specifications. Cost included with "Concrete Superstructure".

Joint openings shall be adjusted according to Article 520.04 of the Std. Specs. when the deck is poured at an ambient temperature other than 50° F.

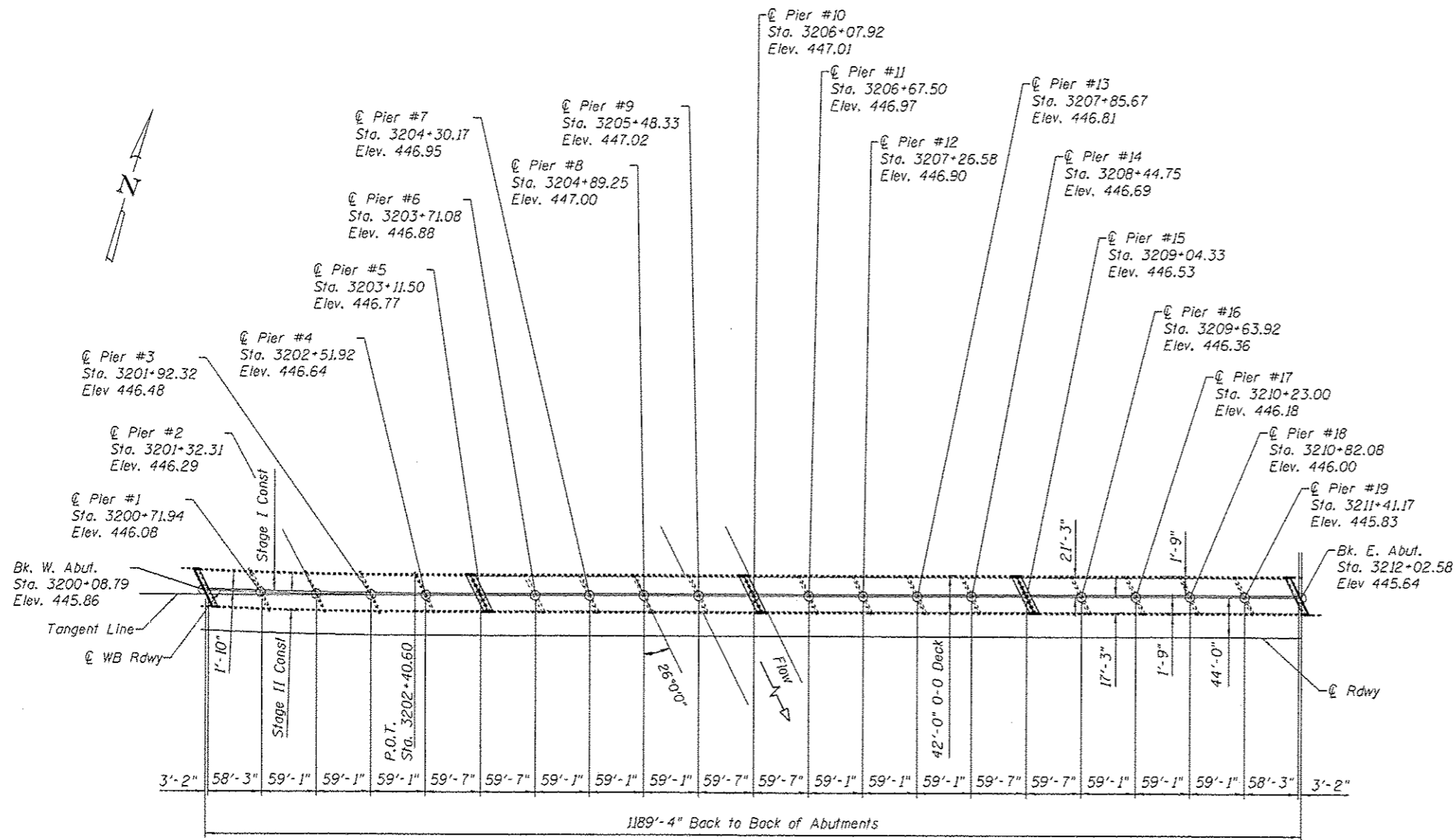
The Contractor shall use extreme care during concrete removal so as not to damage the PPC I-Beams. Any damage to the PPCI-Beams shall be repaired at the Contractor's expense.

INDEX OF SHEETS

1. General Plan & Elevation
2. Deck Cross Section (Spans 1-5)
3. Deck Cross Section (Spans 6-20)
4. Joint Removal (W. Abut.)
5. Joint Removal (Piers 5 & 10)
6. Joint Removal (Pier 15 & E. Abut.)
7. Joint Replacement (W. Abut.)
8. Joint Replacement (Pier 5)
9. Joint Replacement (Pier 10)
10. Joint Replacement (Pier 15)
11. Joint Replacement (E. Abut.)
12. Joint Details
13. Rail Anchorage Details
14. Drain Extension & Plugging Locations (Spans 1-10)
15. Drain Extension & Plugging Locations (Spans 11-20)
16. Drain Details
17. Strip Seal Details
18. Temporary Concrete Barrier
19. Bar Splicers
20. For Information Only (F.I.O.)-Existing General Plan & Elevation
21. F.I.O.-Existing Footing Plan
22. F.I.O.-Existing Framing Plan (Spans 1-5)



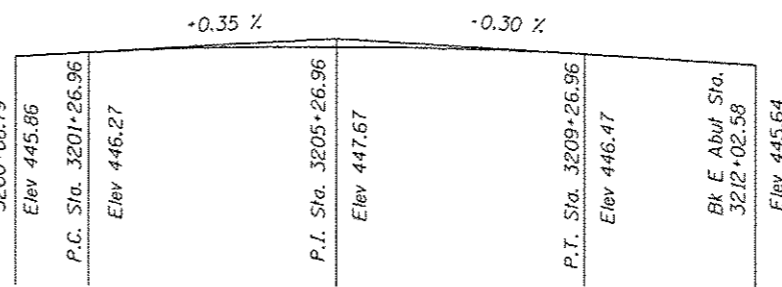
ELEVATION



PLAN

Replace deck ends at abutments, piers 5, 10 & 15 and install Preformed Joint Strip Seal.
 Perform partial and full depth patching
 Floor Drain Extensions & Plug Existing Drains

See sheet 20 of 22 for curve data.



PROFILE GRADE



Expires 11/30/14

TOTAL BILL OF MATERIAL

ITEM	UNIT	TOTAL
Concrete Removal	Cu. Yd.	87.9
Concrete Superstructure	Cu. Yd.	87.4
Floor Drain Extension	Each	121
Plug Existing Deck Drains	Each	223
Reinforcement Bars, Epoxy Coated	Pound	13700
Bar Splicers	Each	88
Preformed Joint Strip Seal	Foot	228
Deck Slab Repair (Partial)	Sq. Yd.	125
Deck Slab Repair (Full Depth, Type II)	Sq. Yd.	25

DESIGNED - A.Y.V.	EXAMINED - <i>Timothy A. [Signature]</i>	DATE - 3/13/14	STATE OF ILLINOIS DEPARTMENT OF TRANSPORTATION	GENERAL PLAN & ELEVATION SN 014-0058 [New US 50 WB (N. Bridge) over Shoal Ck.]	F.A.P. RTE. 327	SECTION 14-148-1	COUNTY CLINTON	TOTAL SHEETS 27	SHEET NO. 6
CHECKED - ATU	PASSED - <i>[Signature]</i>	REVISED			SHEET NO. 1 OF 22 SHEETS				
DRAWN - A.Y.V.	ENGINEER OF BRIDGES AND STRUCTURES	REVISED	ILLINOIS FED. AID PROJECT CONTRACT NO. 76G91						